

## Central U.S. Carlot

### Beef Report

Wednesday, Feb. 5

Report supplied by USDA

Central U.S. Carlot Beef Report Includes The Major Production Areas In The Midwest, Texas, And Oklahoma. As Of 4:00 P.M.

Compared to Tuesday's 4:00 P.M. report: Steer and heifer carcasses \$2.00 lower except holstein type \$1.00 lower. Demand and trading light on moderate supplies.

Sales reported on 52 loads of steer and heifer carcasses.

### Steer Beef

28 Loads

### FOB Omaha Basis

Choice 3 600-900 lbs. 87.00.

Choice 2 600-700 lbs. 89.00 late Tuesday.

Choice 4 600-900 lbs. 79.00.

Good 2-3 600-900 lbs. 81.00.

Good 2 & Low 3 600-700 lbs. 84.50, late Tuesday.

Choice 2-3 600-900 lbs. 81.50-82.50, late 81.50, Hols Type.

Good 2-3 600-900 lbs. 77.50-78.50, late 77.50, Hols. Type.

### Heifer Carcass

24 Loads

### FOB Omaha Basis

Choice 3 550-700 lbs. 85.00.  
Choice 3 500-550 lbs. 84.00-85.00, late 84.00.

Choice 3 400-500 lbs. 82.00-83.00, late 82.00.

Choice 2 600-700 lbs. 87.00, late Tuesday.

Choice 4 500-700 lbs. 79.00.

Good 2-3 550-700 lbs. 79.00.

### Cow Carcasses:

3 loads

Sales in Eastern Texas and Oklahoma Production Areas.

Cutter 1-2 350&up lbs. 77.00.

### Bull Carcasses

4 Loads

Bull 1-2 600&up lbs. 79.00.

### Boneless Processing Beef

Beef Trimmings

77 loads

90% Chem Lean Fresh 96.00-97.00.

50% Chem Lean Fresh 40.00-43.00, Bulk 41.00.

Eastern Texas and Oklahoma Production Areas:

90% Chem Lean Fresh 98.00-100.00.

90% Chem Lean Frozen 100.00-101.00.

85% Chem Lean Fresh 93.00.

75% Chem Lean Fresh 77.00.

## Central U.S. Carlot

### Pork Report

Wednesday, Feb. 5

Report supplied by USDA

Central U.S. Carlot Pork Report FOB Omaha Basis (Includes the major production areas in the Midwest) as of 3:30 P.M.

Compared to Tuesday's 4:00 P.M. report: Fresh Pork Loins 14-18 lbs. \$1.00-3.00 higher, no test other weights; Picnics steady; Skd Hams 20-26 lbs. \$.50-1.50 higher, no recent comparison other weights; Sdls Bellies 12-16 lbs. steady to \$1.00 lower. Trade active on Loins, slow to moderate on other items. Demand and offerings light to moderate.

U.S. No. 2 175 'b. Pork carcass cutout value declined \$.04 to \$58.94 per cwt.

Sales reported on 40 loads of fresh pork cuts and 1 load of trimmings and boneless processing pork.

LOINS, REGULAR: 19 14-18 lbs. 87.00-90.00, couple loads 92.00, 1.00-3.00 higher.

### Picnics

4-8 lbs. 46.00, steady.

### Boston Butts

4-8 lbs. 60.00; 4-8 lbs. 63.50 combo packed.

### Skinned Hams

17-20 lbs. 65.00; 20-26 lbs. 63.00-64.00, .50-1.50 higher.

### Belles

(Sdls Skin On)

12-14 lbs. 51.00-52.00, .50-1.00 lower; 14-16 lbs. 51.00-54.00, generally steady.

### Pork Trimmings/ Boneless Processing Pork (Chemical Lean)

72% Lean Trmgs Fresh 71.00, -steady.

### Cured and Processed Pork: Smoked Hams (Water Added)

16-19 lbs. 75.00-83.00; 19-23 lbs. 68.00-80.00.

### Picnics

4-7 lbs. 58.00-64.00.

### No. 1 Bacon

1 Lb. Pack 122.00-159.00.

Lambs 60 to 70, New Crop to 135.00.

Sheep 25.00-31.00.

Hogs, 200 to 250 42.00-45.00.

Sows 30.00-35.00.

Boars 30.00-36.00.

Pigs, each 12.00-36.00.

Heifers 38.00-44.25.

Steers 39.00-44.00.

Steers, feeder 36.00-50.00.

Bulls 41.00-47.00.

Cows, utility 39.00-41.75.

Cows, fat 38.00-41.00.

Cows, medium 34.00-37.00.

Cows, poor or small 30.00-33.00.

Cattle Market real active.

Calf Market higher.

Horses 1 small 95.00.

Ponies 62.50.

Goats each 15.00-40.00.

Hay: 2nd cutting 105.00 per ton.

Remarks: Real active market on all livestock.

Feeder Sale 1st Monday of Each Month.

Dairy Sale 3rd Thursday of Each Month.

## Valley Livestock

Athens, Pa.

Monday, Feb. 3

Report supplied by auction

Holstein Hfr. Calves 55.00-79.00.

Veal Calves 80.00-97.00.

Vealer Bull Calves 80.00-109.00.

Slaughter Calves 48.00-60.00.

Grassers & Feeders 34.00-50.00.

## ATTENTION FARMERS

The New Way To Market Your Livestock

### HATFIELD

### MOYER

PACKING CO.

Will Receive Hogs

PACKING CO.

Will Receive Cattle

At The

### BLAIR-BEDFORD

### BUYING STATION

RD 1 Martinsburg, Pa

**MONDAYS** - Hogs 8 AM to 11:30 AM

Cattle & Calves 8 AM to 3 PM

**THURSDAYS** - Cattle & Calves

8 AM to 3 PM

• No commission or yardage fees deducted from check

• Livestock weighed and paid for immediately

• You may call our office sale day for prices

**DALE R. HOOVER - Owner**

Business 814-793-3077

Residence 814-793-2657

## Green Dragon Livestock Sales



Location: Ephrata RD 4. 1 mile N. on North State St., Ephrata.

## COWS COWS COWS SALE EVERY FRIDAY

Lots of good Northern Feeder & Stockers. Slaughter Cows - Bull Steer, Veal-lamb

11:00 A.M.-Beef Sale 200-300 each week.

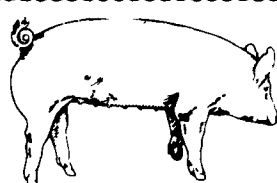
1:00 P.M.-Dairy Sale.

7:00 P.M.-Small Animal Sale.

For Special Sales and Herd Dispersals on farm or at our barn or other market information call: Office 717-733-2444, Home 717-838-4318.

**WALTER H. RISSE, Proprietor**

All out of state and new buyers must have cash or certified check or current letter of credit from bank.



## EMERY'S BUYING STATION

## OPEN TO RECEIVE YOUR MARKET HOGS

AT THE GREEN DRAGON MARKET RD 4, EPHRATA, PA 17522 1 MILE NORTH OF EPHRATA ON NORTH STATE STREET.

**HOURS:** MONDAY, TUESDAY, and WEDNESDAY 6:00 A.M. to 11:30 A.M.

215-458-5677 Residence

717-733-9648 Office

**YOU ARE PAID FOR YOUR HOGS IMMEDIATELY**

Ken & Lois Emery, Proprietors

## KING'S AUCTION, KIRKWOOD

Hay, Straw and Grain Auction

EVERY TUESDAY

12:00

Located Rt. 472 5 miles south of Quarryville or 6 miles north of Oxford at Shaub's Auction House

Lloyd H. Kreider,

Auctioneer

AU-000513L

No out of state checks ALL TRUCKERS AND FARMERS WELCOME

## HAY & STRAW SALE

12:00 Noon

Every Wednesday Westend of Avondale at the intersection of Baltimore Pike and Route 41.

Harvey Z. Martin

215-268-3604

(Office)

215-445-5303

(Residence)

## HOGS CATTLE FUTURES AND OPTIONS

COMMISSION \$50.00

Call for information plus our

## FREE

MARKET LETTER featuring a Special Situation Suggestion!

SPECIALIZING IN COMMODITIES EXCLUSIVELY

IN PENNSYLVANIA

CALL

(800) 322-9274

ALL OTHER AREAS

(800) 523-9388

ALLENTOWN

(215) 821-8111

Rosenthal &

Company

2200 Hamilton Street, Suite 102,

Allentown,

Penna. 18104

Members of All Principal Commodities Exchanges



# "WANTED" LEGHORN FOWL



## NEW SANITIZED CAGE CART SYSTEMS OR COOPS

Call Richard Sechler, Tom Feger, Nelson Legge for quotations

PA Watts # 800-342-2249 or call collect 215-488-7617

## SECHLER'S POULTRY, INC.

Box G, Strausstown, PA 19559