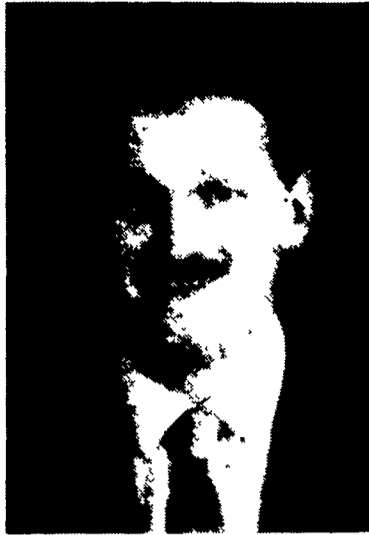


Sire Power adds staff member

TUNKHANNOCK — Gary L. Hennip, Rome, Pennsylvania is named to the staff position as Northeast Sales and Service Director for NESD (Northeast Sales Division) of Sire Power, Inc., according to DuWayne A. Kutz, Sire Power General Manager.

In his new position, Gary will be responsible for directing technician field activities and Direct Herd services within the NESD membership area. Gary will work with the technician force and Direct Herd Representatives to develop and coordinate a total sales and service effort for the NESD membership area. He will also initiate new services and programs, and work with promotion of the sire and sales programs offered through Sire Power.

Gary brings to his position proven ability in this field. He has been a Professional technician for Sire Power in NESD District III, for the past five years. He developed the area and had a successful sales growth. Prior to his appointment, Gary was a herdsman for Davi-Le-Ray Farms of Leraysville, PA from June 1979 to February 1981. He also taught



8th grade math in the Towanda Area School District, October 1978 to June 1979.

Gary, a native of Northeastern, PA received his Bachelor of Science Degree in Education from Mansfield State College, PA in 1978. While attending school, Gary was president of Kappa Delta Pi (an honorary education association); a member of the Pennsylvania Education Association and the Elementary Education Association.

Cornell to host buyout meetings

ITHACA, NY — To help farmers decide whether to participate in the federal "Milk Production Termination Program," better known as the "dairy herd buy-out," Cornell Cooperative Extension will launch a major educational program throughout New York State.

The measure, adopted in December 1985 as part of the 1985 farm bill (Food Security Act), authorizes the federal government to pay farmers to slaughter their dairy herds for beef and retire their dairy buildings in an effort to reduce the nation's milk surplus.

Although the full details on the mechanics of the new program are not available, faculty in the New York State College of Agriculture and Life Sciences at Cornell University are planning a major education effort to inform Cornell Cooperative Extension county agents, lenders, and others who

Born and raised on a registered Holstein dairy farm, he enjoys working with cattle, the A.I. industry, and people. Gary's sales experience, dairy background, and ability will enhance his new staff position with Sire Power, Inc.

Gary and his wife Marianne, with their daughter Elizabeth, will relocate to the Tunkhannock area.

work with farmers, about the new legislation. They also are developing a detailed worksheet for farmers to calculate whether the buy-out program would benefit them.

After training, county agents and other specialists will conduct information meetings throughout the state and hold individual counseling sessions with farmers and their families.

Cornell Cooperative Extension's educational program will include details on the Conservation

Reserve, which is also part of the farm bill. It is designed to take up to 45 million acres of erodible land out of production during the next five years in an effort to promote soil conservation on U.S. farmland.

Cornell's agricultural experts expect that details on the new programs will become available by the end of January, and their educational campaign will begin in early February. It is expected that the sign-up period for the programs will begin in February.

For more information, contact the county offices of Cornell Cooperative Extension.

Dr. Charles J. Blanford dies

NEW YORK — Former Milk Market Administrator Dr. Charles J. Blanford passed away suddenly of a heart attack on Monday, January 13, 1986. Because of his deep dedication to all his activities, Dr. Blanford will be sorely missed.

Dr. Blanford started in 1942 as Market Administrator of the New York market, which later became the New York-New Jersey market. He retired on July 1, 1967.

He was noted for searching for and advocating new innovative order provisions to solve complex milk marketing problems. He was recognized as a leader that all segments of industry and government respected.

Dr. Blanford received his Ph.D. from Cornell University in Agricultural Economics with a specialty in milk marketing. Since his retirement, he has actively pursued his avocation which was track and field coaching and officiating. He designed many high school and college tracks and

was the primary consultant in the design of the Madison Square Garden track and the indoor track at New Jersey's Byrne Arena.

A partial listing of Dr. Blanford's honors and awards include: The New York Track Writers Association Meritorious Service Award, the "AUU Gold Medal" special award from the AUU Relays, the George Shelton Award from the E.C.A.C., and a dedication of their track journal to Cornell University to him in recognition of his long-time support of Cornell track and field, and his induction into the Westchester Sports Hall of Fame.

In 1982, Dr. Blanford was honored by receiving the first Long and Meritorious Service Award from the U.S. Olympic Invitational Committee. Dr. Edison established a scholarship named for him to be given each year to honor a student athlete



The satisfaction that comes from doing a good job of farming

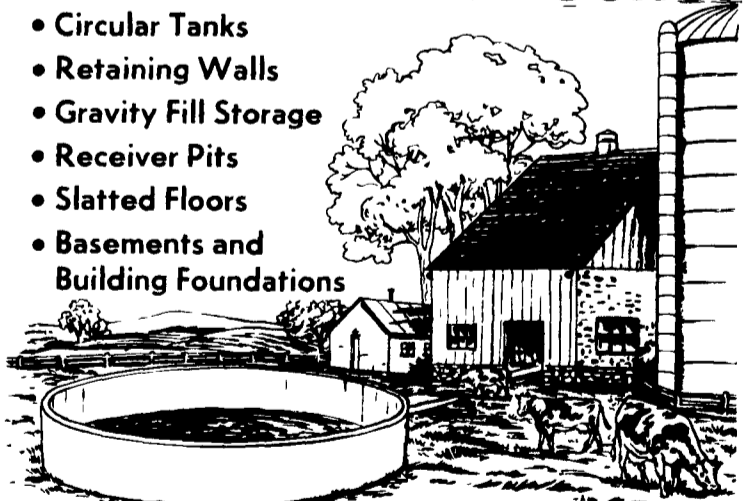
Liming is one of the most important factors in keeping your soil in the highest productive range. A good pasture with a pH of 6.5 or higher for example will make 300 to 400 lbs of beef per acre and produce up to \$100 gross income per acre. This means with the help of lime profits from pastures can compare favorably with feed or grain crops.



ORDER NOW FOR PROMPT DELIVERY
Blue Ball (717) 354-4125
Gap (717) 442-4148

POURED REINFORCED CONCRETE CONSTRUCTION

- Circular Tanks
- Retaining Walls
- Gravity Fill Storage
- Receiver Pits
- Slatted Floors
- Basements and Building Foundations



SIZES & LAYOUTS TO YOUR SPECIFICATIONS

We are qualified to handle any poured concrete job you may need. We use a practical aluminum forming system to create concrete structures of maximum strength and durability. For a highly satisfactory job at an affordable price, get in touch with us.

POURED FOR DURABILITY

Groffdale

concrete walls, inc.

BRICK CHURCH RD LEOLA, PA 17540

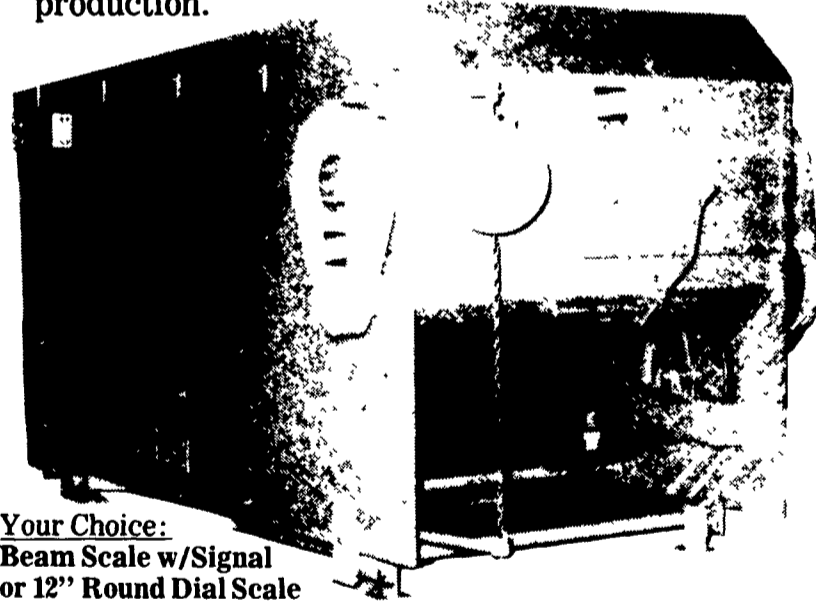
FOR SALES & LAYOUT CONTACT
GROFFDALE POURED WALLS (717) 656-2016
JAKE KING (717) 656-7566

RISSLER FORAGE MIXERS

For Your Total Ration Mix Requirements

A Special Cash Discount will be given on orders placed before March 1st, 1986.

Get your order in before the Spring rush. Save more \$\$\$ off our regular low price. This blender will quickly pay for itself by increasing profits through lower feed costs and higher production.



We Stand Behind Our Forage Blenders

Your Choice:
Beam Scale w/Signal
or 12" Round Dial Scale

- 1/4 to 3/8 Steel Reinforcements
- Fast 2-3 Minute Mix Time
- Stainless Steel Floor
- Low Power Requirements

Mixer Can Be Filled Anywhere Without Being Run All The Time

SPECIFICATIONS

Cu Ft Capacity MODEL	75	105	135	150	190	230
Bushel Capacity	60	82	108	120	152	184
Motor H P	3	3	3	5	5	5
Forages 20 lbs per Cu Ft	1500#	2100#	2700#	3000#	3800#	4600#
Approx # Cows (TMR) Mix Twice Daily	36	45	55	62	82	100
Overall Width	48	60"	60"	60"	73"	73"
Height with Scales Approx	67	67"	67"	76"	79"	79"
Overall Length	96	96"	96"	120"	120"	144"
Discharge Height Without Chute	24	24	24"	34"	34"	34"

I.H. RISSLER MANUFACTURING CO.
RD 3, Box 64, Denver Rd. Denver, PA 17511
(215) 267-2453