

## Craig named Starline CEO

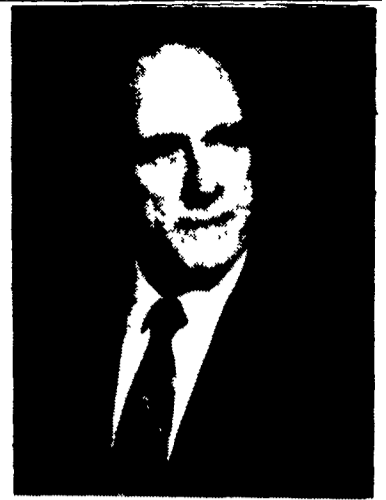
HARVARD, IL — Starline Products, Inc. recently announced the appointment of Monte L. Craig as President/Chief Operating Officer of the company, and an investor. Prior to joining Starline, Craig

was a Group Vice President for Chicago Pneumatic Tool Co., responsible for several operations in the United States and Europe, with combined sales volume of \$200 million. Before that, Craig was

Vice President of Skil Corporation in charge of U.S. manufacturing plants.

Craig's background also includes materials management, distribution and world-wide

computer operations for Skil Corporation. He is a recognized authority on the use of the computer in manufacturing. He replaces Roger M. Peterson and C.J. Fields, who continue as members of the board of directors, and investors.



Starline manufactures and markets a complete line of farmstead equipment under the trade name Star-trac. The company also manufactures and markets building hardware and equipment under the trade name Cannon Ball/HNP Building Products. The company recently celebrated its 100th year in operation and has been located here in Harvard, Illinois throughout that time.

## Cost-sharing funds

HARRISBURG — Dauphin County farmers who need financial assistance to perform conservation work on their farms may apply for cost-sharing funds under the federally administered Agriculture Conservation Program. Farmers should enroll with the Dauphin County ASCS Office (652-8401) before Feb. 15.

The County Committee will review all requests which will solve the high priority conservation problems. Approvals will not be based on a first-come, first serve basis.

The practices that will be cost-shared for 1986 are sod waterways, terraces, diversions, strip-cropping, contour farming, fall seedings, animal waste facilities, winter cover crop, sediment retention structures, grazing land protection, planting forest trees, and improving a stand of forest trees.

Contact the ASCS Office for more information concerning the ACP Program.

**READ  
LANCASTER FARMING  
FOR COMPLETE  
AND UP-TO-DATE  
MARKET REPORTS**



Lift.  
Dig.  
Scoop.  
Doze.  
Load.  
Push.  
Scrape.  
Haul.  
Trench.  
And  
Enjoy.

Of course you'll enjoy the smooth operation of Gehl's versatile skid loaders. Plus all of the creature comforts inside the cab.

But what you're likely to enjoy most is thinking about how much time and money you're saving, being able to get tough jobs done fast.

You'll enjoy the knowledge that your Gehl outclasses the competition. With dual, hand-operated LOAD-TRAK T-bar controls—one on each side within easy reach—and simpler to learn and use than foot controls. A dual-purpose seat bar that also serves as a comfortable arm rest. Rollback ROPS for quick serviceability. Quick Hydro-Lock attachment change. Easy engine access. Plus many more convenience features.

You'll also enjoy being able to add specialty attachments, easily and quickly, confident your machine can handle them. Like pallet forks. Utility fork with grapple. Buckets. Backhoes. Trenchers. Tree diggers. Sweepers. You name it.

Take a look at Gehl's full line of loaders and pick the one that's best for you. On the popular liquid-cooled 3510 gas/3610 diesel and 4510 gas/4610 diesel loaders, you'll like the self-leveling load action. And you'll



With removal of two bolts, overhead guard rolls back and locks, exposing entire drive train. Benefit: lower maintenance cost, greater protection for the mechanic.

like Gehl's very affordable 3310 gas/3410 diesel with easy handling and superior engineering.

For extra heavy work loads, choose the new 6620 diesel. With an SAE lift rating of 2,050 lbs., a lift height of 123 in., and a reach of 35 in., it's the biggest loader in the lineup, and outreaches even the so-called "super boom" machines.

Your Gehl dealer will show you how these versatile skid loaders can run circles around the competition. Make us prove it with a demonstration. You'll enjoy that! Gehl Company, West Bend, WI 53095.

Investing today in the future of agriculture

**GEHL**

**WAIVER OF FINANCE  
UNTIL SEPTEMBER 1, 1986  
ON ALL GEHL EQUIPMENT**  
With 30% Down Payment, Cash Or Trade-In

## See Your Dealer Today

L. HERR & BRO.  
Warryville, PA  
717-786-3521

OFFER BROS. INC.  
Lombard, PA  
717-263-8424

AMBERGER'S  
OF FONTANA  
4 Lebanon, PA  
(Fontana)  
717-867-5161

PEOPLE'S  
SALES & SERVICE  
Oakland Mills, PA  
717-463-2735

LEBANON VALLEY  
IMPLEMENT CO., INC.  
Richland, PA  
717-866-7518

GEO. W. KINSMAN,  
INC.  
516 Main Street  
Honesdale, PA  
717-253-3440

HINES EQUIPMENT  
Cresson, PA  
814-886-4183  
Bellwood  
814-742-8171

PETERMAN FARM  
EQUIPMENT, INC.  
225 York Rd.  
Carlisle, PA  
717-249-5338

BINKLEY & HURST  
BROS.  
133 Rothsville  
Station Road  
Lititz, PA  
717-626-4705

BENNETT  
MACHINE CO.  
1601 S. Dupont Blvd.  
Milford, DE  
302-422-4837

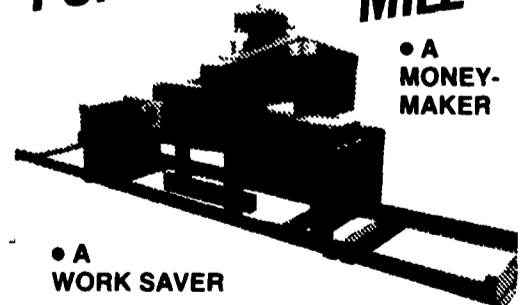
ECKROTH BROS.  
FARM EQUIPMENT  
RT 2 Box 24A  
New Ringgold, PA  
717-943-2131

MILLER EQUIPMENT  
CO.  
RD 1  
Bechtelsville, PA  
215-845-2911

NICHOLS FARM  
EQUIPMENT  
Bloomsburg, PA  
717-784-7731

ARNETT'S GARAGE  
Rt. 9 Box 125  
Hagerstown, MD  
301-733-0515

## KASCO PORTABLE BANDSAW MILL



• A  
MONEY-  
MAKER

• A  
WORK SAVER

This rugged sawmill cuts boards any thickness from 1/4" to 9" • it will quarter saw • handles logs up to 24" diameter • cuts boards smooth and straight • Walnut, Oak, Cherry and other hardwoods are no problem to saw • saves you more usable lumber • low price makes this saw affordable for individual use.

Call or write for full details.

**Kasco Manufacturing Company, Inc.**  
Route 3 Box 393 • Shelbyville, Indiana 46176  
Phone (317) 398-7973