



Livestock market and auction news

Virginia Auction Summary

Jan. 23-29, 1986

Report supplied by VDA South & Southwest Va.

Receipts: 2,297.

Trend: Steady to 2.00 higher.

STEERS: Medium 1 300-500 lbs. 62.00-70.00; 500-700 lbs. 53.00-66.00; 700-1000 lbs. 52.00-58.25. Large 1 300-500 lbs. 63.00-69.00; 500-700 lbs. 57.50-65.00; 700-1000 lbs. 53.25. Small 1 300-500 lbs. 54.00-63.00; 500-

700 lbs. 51.00-60.00.

HEIFERS: Medium 1 300-500 lbs. 46.00-56.50, 500-700 lbs. 46.50-55.00; 700-900 lbs. 42.50-48.70. Large 1 300-500 lbs. 50.00-58.50; 500-700 lbs. 50.00-53.00. Small 1 300-500 lbs. 43.50-55.50; 500-700 lbs. 44.00-45.50.

Northern, Va.

Jan. 23-29, 1986

STEERS: Medium 1 300-500 lbs. 58.00-70.00; 500-700 lbs. 52.00-64.50; 700-1000 lbs. 50.00-54.00. Large 1 500-700 lbs. 58.10-60.00; 700-1000 lbs. 48.00-53.25. Small 1 300-500 lbs. 55.00-62.00; 500-700 lbs. 42.25.

HEIFERS: Medium 1 300-500 lbs. 42.00-56.75; 500-700 lbs. 43.75-53.50. Large 1 300-500 lbs. 52.00-55.75; 500-700 lbs. 44.00-45.00. Small 1 300-500 lbs. 43.50-46.25; 500-700 lbs. 39.50-41.75.

Shenandoah Valley Livestock

Harrisonburg, Va.

Saturday, Jan. 25

Report supplied by auction

FEEDER CATTLE: Trend: All Feeder cattle steady. **STEERS:** M&L-1 300-500 lbs. 58.00-63.50; 500-700 lbs. 52.00-63.75; 700-1000 lbs.

50.00-54.50; Holstein 300-1000 38.50-49.00. S-L&M&L-2 300-500 lbs. 43.50; 500-700 lbs. 42.75.

HEIFERS: M&L-1 300-500 lbs. 42.00-47.50; 500-700 lbs. 43.00-47.50. S-L&M&L-2 500-700 lbs. 39.50-48.75.

STOCK COWS: W/C. Beef 490.00-525.00; Baby Calves 50.00-100.00, Small 20.00-40.00.

SLAUGHTER COWS: 1.00 to 2.00 Higher. Utility & Commercial 2-4 31.50-40.00; Canner & Cutters 1-3 26.50-31.00.

SLAUGHTER BULLS 1 & 2: 37.00-41.50.

LAMBS: Red O. Choice 63.50; Slaughter Ewes 30.00-31.50.

HOGS: US 1-3 200-240 lbs. 45.00; Sows 1-3 35.00-40.00; Boars 27.00.

SLAUGHTER CALVES: Good & Choice 47.00-55.00.

Westminster Livestock Auction

Hagerstown, Md.

Tuesday, Jan. 21

Report supplied by auction

SLAUGHTER COWS: Active Bidding \$1.00-2.00 Higher. High Yield Hfr. Type To \$41.75; Utility 36.00-39.50; Canners 32.00-36.00; Shelly 31.00-Down. Bulls- Good \$43.00-44.25; Medium 37.00-41.00. Fed Steers- Choice Hereford

\$54.00-56.25; Good Hol. X 1500-1700 lb. 48.00-49.75; Holstein 1000-1500 lb. 39.00-45.00. Fed Heifers- Few Choice 53.00-55.50; Utility 39.00-42.00. Veal Calves- Good Run Good & Low Choice. Few \$70.00-80.00; Standard 125-150 lb. 60.00-70.00; Killers \$5.00-8.00; Higher 80-100 lb. \$47.00-56.00; Weak/Rough 40.00-Down. Farm Calves- Good demand. Holstein Bulls 105-125 lb. 88.00-107.00; 90-100 lb. 65.00-95.00. Butcher Hogs- Steady. US #1 & 3. 215-245 lb. \$45.50-46.00; 240-260 lb. 44.50; 195-210 lb. 44.25; Boars- 400-650 lb. \$24.00-25.50.

STOCK CATTLE: 60 Hd. \$2.00 Higher. Steers- Scarce. Good 400-600 lb. \$55.00-58.50; Good 850-950 lb. 52.00-54.00. Heifers- \$3.00 Higher. Choice 300-600 lb. \$49.00-54.50; Good 45.00-50.00; 700-850 lb. 40.00-44.50. Bulls- 300-600 lb. Good \$49.00-58.00; 700-950 lb. 42.00-48.50. Lambs- 10 Hd. Choice to Prime. 100-120 lb. \$66.00-68.50; Good 80-90 lb. 59.00-62.00; 2 Hd. 150 & 160 lb. \$40.00 & 42.00. Sheep- \$20.00-30.00; Yearlings To 34.00. Goats- Large \$40.00-50.00; 1 Billy At 65.00; Medium 28.00-40.00. Pigs & Shoats- 154 Hd. Steady To \$2.00 higher. 20-30 lb. \$17.00-26.00; 30-60 lb. 25.00-36.00; 60-90 lb. 28.00-37.00; By the Lb. 100-140 lb. 39.00-44.00. Sows- 350-500 lb. \$34.50-38.00.

Prices were higher on cows, calves, and feeder cattle this week. There is a lot of demand for all

types of feeder cattle. The mild weather must have people thinking Spring.

Hatfield Packing Co. is now represented here each week. Top prices paid for US # 1 & 2 Hogs. Give us a try.

Hay Sale 32 Loads - Alfalfa good to very good \$60-77.50 \$1.65 a bale, Alfalfa Timothy \$62.50, Alfalfa Orchard Grass \$75-101, Timothy \$42.50-67.50, Timothy Clover \$42.50-53.00, Clover 80 cents-\$1.05 a bale, Wood \$65.00 a cord.

St. Louis Feeder Cattle

Thursday, January 30

Report supplied by USDA

FEEDERS: Receipts around 1,200 head. Feeder steers 1.00-2.00 higher. Feeder heifers fully steady, instances 1.00 higher. Supply mainly medium and large frame 1 steers and heifers. Quality improved over previous weeks.

FEEDER STEERS: Medium and large frame 1: 300-500 lbs. 64.00-70.00; 500-700 lbs. 59.00-65.00; package thin 570 lbs. 68.00; 700-900 lbs. 57.00-60.00. Few lots fleshy 500-850 lbs. 55.00-59.00.

Medium and Large Frame 1-2: 350-600 lbs. 54.00-63.00.

FEEDER HEIFERS:

Medium and Large Frame 1: 300-500 lbs. 53.00-59.00; 500-800 lbs. 50.75-57.00.

Medium and Large Frame 1-2: 400-800 lbs. 45.00-49.00.

Custom Liquid Manure Hauling 300 Gal. Tank Truck Lancaster & York Counties

Don Groff

Holtwood, Pa

717 / 284-2580

LIVESTOCK HAULING

Dependable Service

6 Possum Bottom Tractors and Trailers Call Anytime

Vintage Sales Stables, Inc.

L. Robert Frame Manager

Office 717-442-4181

Office & Home: 215-458-5060

Office & Home: 215-458-8518



ATTENTION FARMERS

EVERY MONDAY HATFIELD PACKING CO. and MOYER PACKING CO.

Will Receive Your Hogs and Cattle at the DANVILLE LIVESTOCK MARKET RD 4, Danville, PA

- We will receive your hogs from 8 AM to 12 Noon every Monday. Your hogs will be weighed and paid for immediately.
- We will also accept your sows & boars.
- Your cattle will be received from 12:30 to 5 P.M. We will either pay you for your cattle immediately or you may sell them dressed weight.
- There will not be a commission or yardage fee deducted from your check.
- You may call our office Monday morning and we will be able to tell you the base price for hogs for the day.

MELVIN M. LEHMAN - Owner Danville Buying Station

Phone: 717-275-2880

LOUIS LYONS & SON

Consign your cattle and hogs, feeder pigs & calves to Louis Lyons & Son. They offer choice service, excellent sorting & marketing of your livestock.

Charles Diller, Manager Phone 394-7915

Burnell Siegrist - Buyer & Seller Phone 626-8653

Experienced Personnel

Immediate Weighing

TOP PRICES FOR DOWN, CRIPPLED AND AS IS COWS, BULLS & STEERS

Slaughtered Under Federal Inspection Paid On Dressed Weight

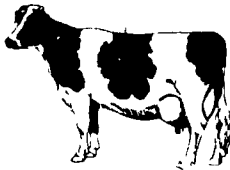
Tom Mulvaney Livestock Trucking (201) 454-4247

HANDLING:

Warren, Hunterdon, Sussex And Somerset Counties, New Jersey

IN PENNA:

Northampton, Bucks And Lehigh Counties



SWINE PRODUCTION SALES AND SERVICE

Complete Feeding Programs and Services

Feeding Programs to Meet Your Individual Needs

Computerized Record Keeping System

Providing Veterinarian Service

PA. Toll Free 1-800-468-5524



419 W. High Street Elizabethtown, PA 17022

Supplying Farm Fresh Feeder Pigs

Marketing and Hedging Services

Marketing of Genesis Breeding Stock

Developing Individual Financial Programs

Direct Dial (717) 367-1525

CRIPPLED AND DISABLED

Cows, Steers & Bulls For Slaughter Under USDA Inspection

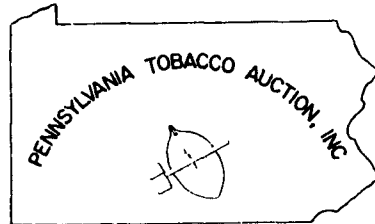
Call Wayne Taylor

717-866-6289

215-286-9400

Lebanon, Berks, Lancaster & Chester Counties

WE WORK FOR THE FARMER!



WE WORK FOR THE FARMER!

ATTENTION TOBACCO FARMERS OFFERING A FAIRER AND MORE COMPETITIVE WAY TO MARKET YOUR TOBACCO

We Thank All Farmers And All Buyers For Supporting Our New Tobacco Marketing Method In Pennsylvania: AUCTION!

TYPE 609: We are scheduling Type 609 sales for Wednesday, February 5, 1986 and Monday, February 10, 1986 and each Monday thereafter until Type 609 is all sold.

TYPE 41: We are scheduling Type 41 sales for Monday, February 3 and Wednesday, February 5, 1986 and we will schedule Type 41 sales thereafter according to market needs.

We will not be receiving any tobacco on Thursday, February 6 or Friday, February 7, 1986.

Please call for scheduling and please stick to your schedule as closely as possible

We have certified Type 609 seeds for sale at the auction

Directions Sale is held 2 1/2 miles east of Intercourse along Rt 340 every Monday Wednesday and Friday

ERIC PROBST GENERAL MANAGER 717-768-7100