

**Ill Health Forces Sale!**  
Selling on contract!

- ☑ "Wanted" - Solid farm family without chattel debt and \$30,000 to put down.
- ☑ 300 Acres, 180 tillable, 32 acres river bottom, large level fields, great alfalfa and corn
- ☑ 52 stanchion barn with new 2" line and 1,000 gallon tank, 20x45- and 30x50 silos.
- ☑ Large heifer facility and open housing with self feeding bunker
- ☑ Over \$40,000 spend on improvements last 2 years.
- ☑ New York, Mohawk Valley's finest opportunity and unlimited potential for \$165,000 with good owner terms.

**MS Homestead Realty**

Farm and Rural Property Specialists  
Auriesville Road RD 1  
Fultonville, N.Y. 12072  
**518-922-6301**  
**518-922-8899**

**FARM**  
**YORK COUNTY - BARRONS VALLEY - DILLSBURG**

156 Acres in one of York County's richest valleys. Large bank barn and feed lot, two silos equipped with unloaders and automatic bunk feeders, 5 bay implement shed, 4 bay garage, 3 bay work shop, 2 car garage, wagon shed and more. A seldom traveled hard road and approx. 150 feet of side lawn separate the barn from a large, 4 bedroom, brick farm house with porches, balcony and an oversized country kitchen. All buildings are in A-1 condition. Priced to sell at \$275,000.

Call Dick Hampton at  
**717-432-5617 or 717-432-9745**  
or write Dick Hampton  
c/o Vernon E. Anderson  
Real Estate  
19 N Baltimore St., Dillsburg, Pa 17019

**Excellent Dairy Farm**

This farm is ready to go, and spring is coming.  
Lovely 4 bedroom rancher, 1½ baths, family room, wood or electric heat, and much more.  
Barn #1 36x162 ft main barn, 61 ties and was built in 1976. 2 box stalls, gutter cleaner. 900 gal. bulk tank, 2" SS Surge pipeline, two 20x60 cement silos and one 20x42 Harvestore corn unit.  
Barn #2 32x60 ft. with 36 tie stalls, large box stall, Badger gutter cleaner 12x30 ft. tile silo  
36x80 pole barn - shop in one end, 1000 bus corn crib, 500 bushel grainery  
Plenty of water  
This farm is in excellent state of cultivation with long term soil conservation plan. It can be bought two ways 225 acres for \$236,000 or 132 acres for \$196,000 Call for details

**Endless Mountain Real Estate**

#1-203-A, Covington, Penna. 16917  
**717-659-5684 - Office**  
**717-549-4173 - Home**  
Richard Chamberlain, Broker

**FARM FOR SALE**



**SUBURBAN REALTY**  
FARM DIVISION

**717/867-5221**

- PENNA. FARMS FOR SALE**  
Nelson L. Ebersole  
Realtor Auctioneer  
717-867-5221  
Lee Reddinger  
717-949-2243  
Victoria Swayne  
717-665-6196  
Francis Ulishney  
717-272-2989  
June Ebersole  
717-867-2771

Write or call for Descriptive Brochure of Farms for Sale  
30 West Main St.  
Annville, PA 17003

**LANCASTER COUNTY**

**155 ACRE DAIRY FARM** with southern exposure situated in a lovely valley w/excellent buildings in the center with large pond and stream covering 2 acres of land. 3 bedr 2 story farmhouse with 2600 sqft. \$475,000. A must to see. Call 717/786-2131.

**5 ACRE FARMETTE** - This handyman special could be perfect for you. 3 BR farmhouse & barn w/5 horse stalls & shop area Woodstove heating for low heat costs in Eden Twp Call 717/464-4700

**COUNTRYMAN'S PARADISE** - 14 acre horse farm with scenic view to enjoy. 4 bedr spacious rancher. Horse barn with box stalls. Rail fencing. Shop area. Much more! Call for details. \$159,000. Call 717/464-4700.

**CHESTER COUNTY**

**199 ACRE HORSE FARM** with facilities to board 200+ horses, race track, turnouts, foaling & breeding operation, training operation w/½ mile track. 1½ mile road frontage gives entrance off of 2 roads. 3 ponds. 22 paddocks. Call 717/786-2131 for other details on this exclusive farm.



EMORY D. WAGNER CO., REALTORS

**SECLUSION & PRIVACY**

Berks Co. Gentlemen farm, 115 acres, 55 tillable, balance woodland & pasture. Log house with 3 bedrooms, horse barn. ¼ mile lane with bridge over stream. Ideal for retreat or executive style estate with some work. Priced \$149,500.

**GOING DAIRY FARM OPERATION**

UNDER \$1800 PER ACRE, 95 acres total, 13 acres pasture, 5 acres woods. Easy rolling topo., spring fed pond, stream. Bulk tank, 3 bay implement shed, comfortable 2 story 3 bedroom home, 1½ baths. Oil and/or woodstove heat Only 10 minutes to Chambersburg.

North of Reading - 50 Mile view, 9½ acres, 2½ story dwelling, 3 BRs, large kitchen, oil heat, barn, minutes to Blue Marsh recreation area. \$87,900.

Farm market opportunity. 3 Acres or 28 acres. Sales building 34x44. Could be adopted to most any kind of retail trade. Large bank barn and a 2 year old farmhouse, located along Rt. 225 near Rt. 147. Call for details.

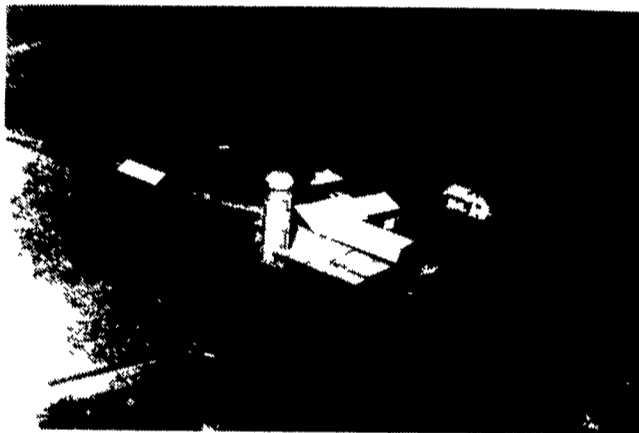
18 Acres large 8 room 2 unit farmhouse, stream, quiet road, NE of Ephrata just off of 222 bypass. 6 min. to turnpike exit. Priced in the \$90's.

Manheim Twp., Lanc. Co. 3 Unit farmhouse on 1 acre zone R-2. Three extra available acres with barn.

**KINGSWAY REALTY**  
REALTORS  
1770 Oregon Pike  
Lancaster  
Phone: 717-569-8701  
or Ephrata 717-733-3344

**FOR SALE**

**170 ACRE DAIRY AND APPLE ORCHARD FARM**



Sodus, New York  
50% Financing Available

For More Information Call  
**717/733-9590**  
or  
**717/354-0006**



**BERKS CO**

• 140 Acre Farm features lovely 2½ story stone home modern kitchen dining room living room, center hall, 4 large bedrooms & bath, large bank barn 2 large machinery sheds small horse barn, large storage bins gently rolling land with pond & stream, \$460,000

**SCHUYLKILL COUNTY**

• 234 acre woodland tract joins state gamelands borders Rt 81 & secondary road Pine Grove area good hunting area call for details \$175 000

**MONTGOMERY COUNTY**

• 82 acres, 65 till balance woodland & pasture w/stream general farm 2½ story 5 bedrm house/LR DR Kitchen & bath bank barn & other buildings \$250,000 \$235 000

**OTHER FARMS AVAILABLE**

Please Call and Tell Us Your Preference

**PAUL M. LONGACRE**

Rt. 100 Hereford, PA 18056

**Ph: 215-679-5919**

**TIOGA COUNTY**

• 410 Acre, 220 tillable Dairy Farm with lovely 2 story home features good 46 stall dairy barn pipeline bulk tank barn cleaner 2nd house new 45x72 machine shed shop & heifer barn 18x60 and 12x35 silos pond stream good ground \$325 000 Cattle & machinery available

• 800 Acre Dairy Farm 400 T 2 very good lovely homes 83 stall dairy barn Steel pipe line 1000 gal tank and barn cleaner (2) 16x60 and (1) 14x40 silos with unloaders Large heifer barn \$365 000 Full line of machinery and cattle available

• 122 Acre 100 T dairy farm 47 tie stalls with 24 free stalls 800 gallon tank barn cleaner pipeline milker 20x60 concrete silo with unloader good house with kitchen dining room 2 living rooms 3 bedrooms and bath \$110 000

• 126 Acre farm 70 T 45 pasture balance wood land Land only Near above farm \$65 000

**SNYDER COUNTY \***

• 186 acre dairy farm 100 T features modern 60 free stall barn w/milking parlor 2 story heifer barn and large machinery shed 20x60 and 20x70 Harvestore silos lovely 2 story home with 3 bedrooms kitchen large living room/dining room laundry and bath \$210 000 Also full line of machinery available

**POTIER COUNTY**

• 116 Acre, hunting ground 30 acres open, balance wooded, borders 2 roads & river Possible Owner financing \$50,000

**BRADFORD COUNTY**

• 110 Acre dairy farm 80 tillable 35 stall dairy barn with dump station barn cleaner 400 gal tank 18x55 silo and 14x60 silo with unloaders and 14x32 silo heifer barn and out buildings Large home with 5 bedrooms kitchen, dining room living room laundry and 2 baths \$150 000 Also cattle and machinery available under separate contract

• 5 acre Dairy Farm Modern 74 stall dairy barn Bulk tank steel pipe line barn cleaner 20x32 Harvestore silo and 20x60 concrete silo Manure storage Modern Ranch home with 4BR's Kit DR LR Bath and Den \$145 000 Also second house available

• 500 Acre Dairy Farm, 450 tillable, features 184 freestall dairy barn, 125 stall heifer barn, double-8 milking parlor, two 1,000 gal bulk tanks, two 100' bunk feeders, three 24x60 and one 20x60 concrete silos w/unloaders, lovely 4 BR home w/kitchen, LR, FR, office, den, laundry & bath 2nd home 3 BRs & bath Spring fed pond & much more Call for details, \$650,000 Cattle & machinery available  
**SUSQUEHANNA COUNTY**

• 265 Acre modern dairy farm w/2 houses, 115 comfort stall dairy barn with pipeline milker, 2 large bulk tanks, barn cleaner 3 large concrete silos large free stall heifer & dry cow facility & large machinery shed, calf barn lovely split level home features modern kit, formal DR, LR, family room laundry, 2 baths 4 BRs Large in ground heated pool 2nd 2 story home modern kit DR, LR, family room, 3 BRs 1½ baths Also large new trailer 200 Head of dairy cattle modern line of machinery including several large tractors All for \$600 000

• 565 Acre dairy farm Features 145 stall barn, heifer barn, large machinery shed, 2½ story house with kitchen, dining room living room, office, family room, laundry, 3 bedrooms, 1½ baths 2nd House Modern 3 bedroom with kitchen, dining room, living room and bath Apartment with modern kitchen, living room, dining room, 3 bedrooms, 1½ baths 3rd House New 2 bedroom, kitchen, living room and bath \$750,000