

Livestock market and auction news

New Wilmington Livestock

N. Wilm., Pa.

Friday, Jan. 17, 1986

89 Lds. Hay, 10 Lds. Straw, 11 Ear Corn.
Alfalfa 55.00-106.00; Mixed Hay 36.00-70.00 few to 29.00; Timothy Hay 37.50-50.00; Straw 34.00-44.00; Ear Corn 57.50-63.00; Oats 11 loads 1.00-1.15 per bushel.

New Holland Sales Stables

New Holland, Pa.

Monday, Jan. 20

122 Lds. Hay, 27 Lds. Straw & 8 Ear Corn.
Alfalfa 56.00-101.00, few to 122.00; Mixed Hay 45.00-98.00, mostly 51.00-86.00; Timothy Hay 47.00-75.00; Clover few 45.00-58.00; Orchard Grass one load 64.00; Straw 32.00-85.00, mostly 44.00-72.00; Ear Corn 64.00-70.00, one load 50.00; Corn Fodder 2 loads 21.00 & 35.00; Oats 3 loads 1.60-1.90 per bushel.

Keister's Livestock

Middleburg, Pa.

Tuesday, January 21, 1986

46 Lds. Hay, 11 Lds. Straw & 4 Ear Corn.
Alfalfa few 57.50-80.00; Mixed Hay 35.00-77.50, mostly 40.00-70.00; Timothy Hay 2 lds. 60.00 & 65.00; Mulch few 27.50-32.50; Straw 57.50-72.50; Ear Corn 65.00-70.00 one load 55.00; Oats 5 loads 1.00-1.20 per bushel

Leinbach Farm Market

Shippensburg, Pa.

Sat. & Tues., Jan. 18 & 21, 1986

53 Lds. Hay, 10 Lds. Straw & 7 Ear Corn.
Alfalfa 56.00-99.00; Mixed Hay 40.00-59.00 few to 35.00; Timothy Hay 45.00-62.00; Clover 2 loads 41.00 & 45.00; Straw 45.00-65.00; Ear Corn 67.00-70.00.

St. Louis Cattle

Thursday, Jan. 30

Report Supplied by USDA

Receipts this week 2,800
Week Ago 2,600

Year Ago 2,900
Compared with the previous week's close, Slaughter Steers 2.00-2.50 higher. Slaughter heifers 1.50-2.00 higher. Cows mostly 3.00 higher. Slaughter bulls 1.00-2.00 higher.

SLAUGHTER STEERS: Mixed choice and prime 2-4 1075-1150 lbs. 61.00-61.50. Choice 2-4 950-1200 lbs. 59.50-61.00. Mixed good and choice 1-3 900-1150 lbs. 58.00-60.00. Good 2-3 900-1150 lbs. 56.50-58.00. Few lots mostly good 2-3 1075-1300 lb. holsteins 46.00-53.00, package 54.00.

SLAUGHTER HEIFERS: Couple lots mixed choice and prime 2-4 900-1050 lbs. 60.00. Choice 2-4 825-1050 lbs. 58.00-59.50. Mixed good and choice 2-3 800-950 lbs. 56.50-58.00. Good 2-3 750-900 lbs. 54.00-56.50.

COWS: Breaking utility and commercial 2-4 35.00-38.00. Cutter and boning utility 1-2 38.00-40.00. High-yielding cutter and boning utility 1-2 40.00-41.00. Canner and low cutter 1-2 35.00-38.00. Shelly canner 1-2 30.00-35.00.

BULLS: YG 1-2 1200-2000 lbs.

42.00-47.25.

Wednesday's Weekly Sheep Auction. Receipts around 300 head. Slaughter lambs mostly steady on light receipts. Not enough slaughter ewes for a market test. Feeder lambs steady to firm.

SLAUGHTER LAMBS: Choice and Prime shorn 100-120 lbs. 67.00-70.00, package prime 101 lbs. 72.50. Choice and Prime woolled 100-125 lbs. 65.00-68.00.

FEEDER LAMBS: Choice and fancy 60-90 lbs. 62.50-67.60.

Peoria Cattle

Thursday, Jan. 30

Report Supplied by USDA

Trading moderate on light supply. Demand good. Bulk of receipts Monday with not enough receipts remainder of week for a market test. Slaughter steers closed 1.00 to 1.50 higher; Slaughter heifers 1.00 higher. Cows closed 2.50 to 4.00 higher. Bulls 1.00 to 3.00 higher supply mainly good to low choice slaughter steers and heifers with 18% cows. Estimated receipts 1200 compared with actual receipts of 1501 a week ago and 1909 a year ago.

SLAUGHTER STEERS: Choice 2-4, mostly 3 1050-1250 lbs. 59.00-

HAY & STRAW SALE

12:00 Noon

Every Wednesday Westend of Avondale at the intersection of Baltimore Pike and Route 41.

Harvey Z. Martin
215-268-3604
(Office)
215-445-5303
(Residence)

KING'S AUCTION,

KIRKWOOD

Hay, Straw and Grain Auction

EVERY TUESDAY

12:00

Located Rt. 472 5 miles south of Quarryville or 6 miles north of Oxford at Shaub's Auction House

Lloyd H. Kreider
Auctioneer
AU-000513L

No out of state checks
ALL TRUCKERS AND FARMERS WELCOME

HOGS

CATTLE

FUTURES AND OPTIONS

COMMISSION \$50.00

Call for information plus our

FREE

MARKET LETTER featuring a Special Situation Suggestion!

SPECIALIZING IN COMMODITIES EXCLUSIVELY IN PENNSYLVANIA CALL

(800) 322-9274

ALL OTHER AREAS (800) 523-9388

ALLENTOWN (215) 821-8111
Rosenthal & Company

2200 Hamilton Street, Suite 102, Allentown, Penna. 18104

Members of All Principal Commodities Exchanges

ATTENTION FARMERS

The New Way To Market Your Livestock

HATFIELD PACKING CO. AND MOYER PACKING CO.
Will Receive Hogs AND Will Receive Cattle

At The

BLAIR-BEDFORD BUYING STATION

RD 1 Martinsburg, Pa.

MONDAYS - Hogs 8 AM to 11:30 AM
Cattle & Calves 8 AM to 3 PM

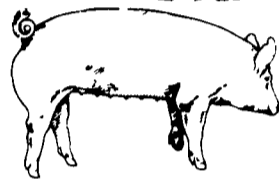
THURSDAYS - Cattle & Calves
8 AM to 3 PM

- No commission or yardage fees deducted from check
- Livestock weighed and paid for immediately
- You may call our office sale day for prices

DALE R. HOOVER - Owner

Business 814-793-3077

Residence 814-793-2657



EMERY'S BUYING STATION

OPEN TO RECEIVE YOUR MARKET HOGS

AT THE GREEN DRAGON MARKET
RD 4, EPHRATA, PA 17522
1 MILE NORTH OF EPHRATA
ON NORTH STATE STREET.

HOURS: MONDAY, TUESDAY, and WEDNESDAY 6:00 A.M. to 11:30 A.M.
215-458-5677 Residence
717-733-9648 Office

YOU ARE PAID FOR YOUR HOGS IMMEDIATELY

Ken & Lois Emery, Proprietors

Green Dragon Livestock Sales



Location: Ephrata RD 4. 1 mile N. on North State St., Ephrata.

COWS COWS COWS
SALE EVERY FRIDAY

Lots of good Northern Feeder & Stockers Slaughter Cows - Bull Steer, Veal-lamb

11:00 A.M.-Beef Sale 200-300 each week.

1:00 P.M.-Dairy Sale.

7:00 P.M.-Small Animal Sale.

For Special Sales and Herd Dispersals on farm or at our barn or other market information call: Office 717-733-2444, Home 717-838-4318.

WALTER H. RISSER, Proprietor

All out of state and new buyers must have cash or certified check or current letter of credit from bank.

MELHORN SALES, SERVICE, TRUCKING CO.

1010 W. Main St., Mount Joy, PA 17552

The only full service company, in this area, to handle the total needs of the poultrymen.

Which Includes:

- DEKALB chicks & started pullets sold by Clay Mumma, Nelson Groff & Harold Mishler.
- Complete loading & unloading of pullets & spent hens.
- New modern dollie equipment to move your pullets fast and efficiently with minimum stress to the pullets

Place Your Confidence In A Full Service Company That Wants To Be Worthy Of Your Business

For More Information Phone:
717-653-1102 or 717-653-2787

Monday - Friday 8 A.M. - 4 P.M. ask for Lynn or Wendy



DEKALB



DEKALB