

Public Auction Register

Closing Date - Monday 5 00 P M
of each week's publication

SAT. APR. 5 - Feeder Cattle & Feeder Pigs, Horse Drawn Farm Mach., Hshd. Located RD1, Port Trevorton, PA. Eli & Elizabeth Miller, Owners. Brian D. Imes, Auct.

SAT. APR. 5 - 9AM Annual Spring Consignment Sale at Beaver Run School, between Exchange and Washingtonville. Fraley Auct. Co.

SAT. APR. 5 - HH Goods, Antiques, Tools. Located in village of Georgetown. Emma L. Petersheim, Steve & Steve, Jr., Petersheim, Aucts.

SAT. APR. 5 - 9AM 11th Annual Consignment Sale of Farm Mach., Lumber & Bldg. Supplies, Hshd., Antiques, Recreation Vehicles, Trucks, Tractors, Autos, Lawnmowers. Located Nescopeck Twp. Vol. Fire Co. No. 1 at Rts. 93 and 239, Nescopeck, PA.

SAT. APR. 5 - 9AM Spring Community Sale. Penns Valley Livestock Auction, Centre Hall, PA. Ron Gilligan, Auct.

SAT. APR. 5 - 8:30AM Geo. Long will sell Farm Mach., Tractors, Tools, Large Selection of Bolts, etc. Located 1/2 mi. off the New Berlin to Middleburg Hwy. Earl Eash, Ken Smith, Aucts.

MON. APR. 7 - Pine Plains, NY. H.C. Winans & Son (Winfarm) Complete Dispersal of 150 Registered Holsteins. Mgd. by: The Cattle Exchange & New York Holstein Assoc., DeLancey & Ithaca, NY.

TUES. APR. 8 - 7PM Feeder Pig Show & Sale. New Holland Sales Stables, Inc., New Holland, PA.

TUES. APR. 8 - Special Spring Feeder Cattle Consignment Sale.

Carlisle Livestock Market, Exit 12 Off I-81, Carlisle, PA. 717-249-4511.

FRI. APR. 11 - 7PM Horse Sale New Holland Sales Stables, Inc., New Holland, PA.

FRI. APR. 11 - 1:30PM PA State Graded Feeder Pigs. Carlisle Livestock Market, Exit 12 off I-81. 717-249-4511.

SAT. APR. 12 - Modern Farm Mach. Located RD2, Millintown, PA. Richard Hackenberger, Owner. Brian D. Imes, Auct.

SAT. APR. 12 - 9AM C.H. Wolgemuth & Sons Annual All Day Consignment Sale. Four mis. W. of Manheim, along Valley Rd., 10 minutes from Rt. 283 at Manheim/Mt. Joy Exit. Lanc. Co., PA.

SAT. APR. 12 - A. Hess Brubaker Dispersal of Reg. Holsteins and Farm Eq. Located NW of Shippensburg, PA, between Lurgan and Newburg. Ralph W. Horst, Auct. V. Art Kling, Pedigrees.

SAT. APR. 12 - 10AM Farm Mach., Butcher Items, Antiques, Hshd. Go 5 mis. S. of Selinsgrove, PA. Snyder Co., or 1 1/2 mis. N. of Port Trevorton on Rt. 11 & 15. Then turn W. onto Verdilla Rd. and proceed 2 1/2 mis. until you come to stop sign. Then make left towards Verdilla & go 1 mi. to where road goes into a Y. At Y, make left and go 1/4 mi. to first farm. One mi. W. of village of Verdilla. Alfred A. & Helen M. Snyder, Owners. Dale L. Longacre Auct.

SAT. APR. 12 - 8:30AM Geo. Long will sell Shop Tools, Selections of Bolts, Tires, Chain Saw & Parts, Auto Parts, Guns, Hshd. Located 1/2 mi. off the New Berlin to Middleburg, PA. Hwy. Earl Eash, Ken Smith, Aucts.

SAT. APR. 19 - Arnold's 41st Hog Sale. Breeding Hogs & Project Pigs. Located Lebanon Fairgrounds, Lebanon, PA. Harry Bachman, Auct.

SAT. APR. 19 - 9AM Extremely Large Annual Consignment Auction of Trucks, Trailers, Carpentry & Masonry Eq., Tools, Mach. for Tier Consultants, Inc. Located Garden Spot Auction, Ephrata, PA. J. Omar Landic Auction Service, Jay M. Witman, Auct.

TUES. APR. 22 - Special Spring Feeder Cattle Sale. Carlisle Livestock Market, Exit 12 Off I-81, Carlisle, PA. 717-249-4511.

WED. APR. 23 - All Kinds of Tractors & Farm Eq. Keener Eq., Inc., 1531 Manheim Pk., Lancaster, PA. C.H. Wolgemuth & B. Rentzel, Aucts.

FRI. APR. 25 - 9AM Farm Eq. New Holland Sales Stables, Inc., New Holland, PA.

FRI. APR. 25 - 1PM Dairy & Heifer Sale. Penns Valley Livestock Auction, Centre Hall, PA. Ron Gilligan, Auct.

MAY

FRI. MAY 2 - 7PM Spring Feeder Pig & Cattle Sale. Penns Valley Livestock Auction, Centre Hall, PA. Ron Gilligan, Auct.

Dairy and Livestock Sales

FRI. MAY 2 - 7PM Horse Sale. New Holland Sales Stables, Inc., New Holland, PA.

FRI. MAY 30 - 9AM Farm Stables, Inc., New Holland, PA.

SAT. MAY 3 - Feeder Cattle & Truck Load of Fresh Produce. Located R.D.1 Liverpool. Owner, Aaron S. Brubaker. Bryan D. Imes, Auct.

TUES. MAY 6 - Special Spring Feeder Cattle Consignment Sale. Carlisle Livestock Market, Exit 12 Off I-81, Carlisle, PA. 717-249-4511.

FRI. MAY 9 - 1:30PM PA State Graded Feeder Pigs. Carlisle Livestock Market, Exit 12 off I-81. 717-249-4511.

SAT. MAY 10 - 10AM Grade Heifer Sale. New Holland Sales Stables, Inc., New Holland, PA.

MON. MAY 26 - Antique Tractors & Farm Eq. Keener Eq., Inc., 1531 Manheim Pk., Lancaster, PA. C.H. Wolgemuth & B. Rentzel, Aucts.

SALE EVERY TUESDAY

Graded Sale
1st Tuesday each month
2 P.M.
Horse Auction
2nd Saturday each month
1 P.M.

FAUQUIER LIVESTOCK EXCHANGE

Marshall, Va
703-364-1566

DEALER IN ALL KINDS OF LIVESTOCK

Also Crippled & Down Cattle

MARLIN S. IRWIN

Quarryville, PA
PH: 717-786-3016

CONSIGNMENT SALE

Sat., March 22, 1986

We are looking for shop machinery, metal & wood-working, construction equipment, tools, welders, generators, air compressors, etc.

- Absolutely No Junk -
*Don't let it sit around...
Turn it into money!*

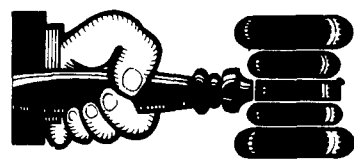
Deadline for inclusion in Sale Bill is February 10, 1986.

For More Information, Call

John At

BEILER HYDRAULICS

(717) 354-6066



AUCTIONEER'S DIRECTORY

NOTICE

To assure that your Public Sale appears in the Public Sale Section we must have your advertisement by 4 P.M. Tuesday of each week's publication.



THINKING OF HAVING AN AUCTION? "EXPERIENCE COUNTS"

Bernie Rell, Auctioneer, and his professional staff has sold thousands of items and has represented farmers from all over and he can solve your auction problems NOW!

CALL NOW TO SCHEDULE YOUR SPRING AUCTION!

AUCTIONEER & REAL ESTATE BROKER

BERNARD D. RELL

R.D.#3, Box 370, Williamsport, PA 17701
Phone (717)745-7200/(717)398-7316

by **Rell Auction**

WOLGEMUTH AUCTIONEERS

R D #2 Manheim Pa

COMPLETE AUCTION SERVICE

CH
PH 717-665-5664
BOB
PH 717-665-6684
DENNIS
PH 717-627-0571

General Auctioneers - Specializing in Liquidation of Personal Property, Equipment, Antiques, Real Estate

Reist Auctioneers

Alfred G. Reist
1050 Eden Road
Lancaster,
PA 17601

Licensed • Bonded
Lancaster 717-569-2079
Evenings/Lititz
717-627-8008

Kreider & Kline Auctioneers

COMPLETE PROFESSIONAL AUCTION SERVICE
REAL ESTATE — FARMS & RESIDENTIAL
PERSONAL PROPERTY — ANTIQUES —
FARM STOCK SALES — LIQUIDATIONS

RANDAL V. KLINE
AUCTIONEER REALTOR
717 733 1006
717 569 8701

LLOYD H. KREIDER
AUCTIONEER
717 786 3394

ROY E. GOOD, JR.
RD 1 BOX 151 A
DENVER PA 17517
215 445 4309

WHITFORD SALES COMPANY

L. ROBERT FRAME & SONS, AUCTIONEERS

L. ROBERT FRAME SR
Vintage Sales Stables, Inc
Paradise, PA 17562

L. ROBERT FRAME JR ESQ
P O Box 100
Uwchland, PA 19480

37 Years Of Complete And Experienced Auction Service We Will Buy Your Farm, Machinery And Cattle OR Sell Them For You At Public Auction For Their Highest Market Value!

FOR INFORMATION CALL

BOB (717) 442-4181
(215) 458-8518

ROB (215) 458-5060

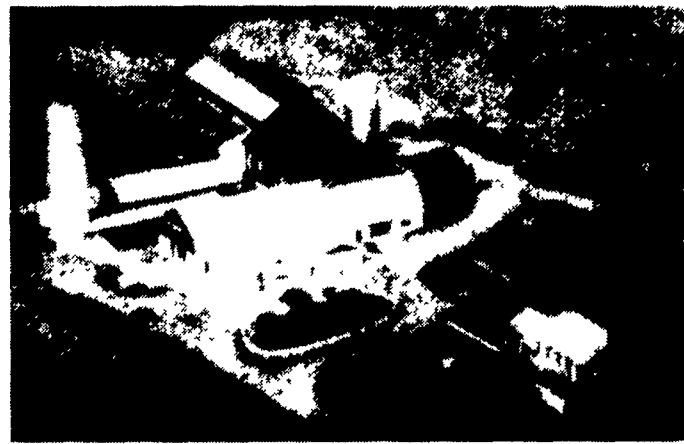
Licensed and Bonded
Eastern Pennsylvania's Foremost Auction Company.

PUBLIC SALE

OF 175 ACRE DAIRY FARM
FRIDAY, FEBRUARY 7, 1986 1:00 P.M.

Location - Cumberland Co., Pa. - Traveling I-81 take Exit 11. Follow Rt. 233 North to Newville. Turn west onto Rt. 641. Follow 641 approx. 8 miles, turn right onto Quigley Rd. Approx. 1 mile to sale. Sale signs posted day of sale.

175 ACRE DAIRY FARM



Approx. 113 A. tillable, 23 A. woodland, 35 A. pasture, balance in bldgs Berks shaly silt soil in high state of cultivation. 32,000 ft. of tile in lowland

2 1/2 STORY BRICK DWELLING

1st Floor - large modern kitchen and dining room combined, family room with fireplace, living room and full bath. Magic Chief gas stove, gas hot water heater and Timberline (fireplace insert) will remain with property
2nd Floor - 4 bedrooms.

This dwelling is complete with full basement, drilled well, never failed, attached summer kitchen and wood shed.

BANK DAIRY BARN

40 tie stalls w/rubber cow mats, 46'x32' loafing area, 8 box stalls, 4 bays, milkhouse w/650 gal. bulk tank.

OTHER IMPROVEMENTS

14x60 stave silo w/unloader and 60' bunk, 10x40 stave silo, 20x20x10 manure pit, 18x60 heifer barn, 2 car garage or equip. shed w/shop, 20x40 Implement shed.

IMMEDIATELY FOLLOWING REAL ESTATE ALSO WILL OFFER

6 calf hutches, 2,000 bales of alfalfa and mixed hay
For Inspection Call: 717-423-6293 for appt.

Terms: 10% down day of sale, balance on or before April 1, '86.

Sale by:
JOHN E. & SUSAN B. LAPP
R.D. 1, Newburg, Pa.
Ph.-717-423-6293

Not Responsible For Accidents

PROFESSIONAL Auctioneering

PAUL E. MARTIN
R.D. 1, Box 553
Stevens, Pa. 17578

JOHN D. STAUFFER
217 Andrea Dr.
Lititz, Pa. 17543

Complete Auction Service. We assist you and advise you from the planning stages of your auction to the completion of your auction.

For A Consultation In Your Home Call
Paul (717) 733 3511 — John (717) 665-5099
Licensed and Bonded