

Livestock market and auction news

Belleville Livestock

Belleville, Pa.
January 29, 1985

Report supplied by PDA

CATTLE 105. Compared with last Wednesday's market: slaughter cows strong to \$1.25 higher. Individual Choice slaughter heifer at 56.00. Breaking Utility and Commercial slaughter cows 36.75-40.75, Cutter and Boning Utility 35-37.50, Canner and Low Cutter 32.25-34.75, Individual Standard slaughter bullock at 44.85. Individual Yield Grade No. 1 930 lbs. slaughter bull at 41.50.

CALVES 119. Good 315-415 lbs. slaughter calves 60.00-65.00. Good vealers 67.00-77, few Utility 60-80 lbs. 45.00-50.00. **FARM CALVES:** Holstein Bulls 90-130 lbs. 60.00-100.00.

HOGS 78. Barrows and gilts \$1.50 higher. US No. 1-2 210-230 lbs. 47.00-47.60, No. 2-3 210-240 lbs. 44.50-46.25, lot No. 2-4 290 lbs. at 39.25. Few US No. 1-3 360-460 lbs. sows 35.00-38.00.

FEEDER PIGS 126. US No. 1-3 20-35 lbs. feeder pigs 21.00-30, 35-50 lbs. 28.00-34.50, lot 65 lbs. at 40 - all per head.

SHEEP 17. Few Good and Choice 50-115 lbs. woolled slaughter lambs

66.00-77.00. Few Slaughter ewes 15.00-39.00. **HOLSTEINS DAIRY COWS \$330-\$800, COUPLE TO \$1,000 PER HEAD.**

Keister's Livestock

Middleburg, Pa.

Tuesday, January 28

Report supplied by auction

CATTLE 199: Compared with last Tuesday's market, slaughter steers mostly 1.00-2.00 higher; Cows strong to 1.00 higher. Choice 1000-1500 lbs. steers 50.00-63.75, few Good 54.00-59.00, few Standard 42.50-47.00, few Choice Holsteins 50.75-52.00, few Good 46.75-50.25. Few Choice heifers 55.50-57.00, few Good 53.00-54.00, few Standard 45.00-56.00. Breaking Utility & Commercial slaughter cows 37.10-40.85, Cutter & Boning Utility 35.00-38.10, Canner & Low Cutter 33.50-35.10. Few Good slaughter bullocks 52.00-54.75. Few Yield Grade No. 1 1330-1800 lbs. bulls 49.25-54.00.

FEEDER CATTLE: Few Medium Frame #1 400-800 lbs. steers 42.00-49.00.

CALVES 145: Few Choice vealers 88.00-97.00, few Standard & Good 110-140 lbs. 69.00-87.00, 70-100 lbs. 51.00-59.00, few Utility 60-80 lbs. 47.00-52.00.

FARM CALVES: Holstein Bulls 90-125 lbs. 85.00-109.00, few down to

60.00. **HOGS 296:** Barrows and gilts \$1 higher. US No. 1 220-235 lbs. barrows and gilts 48.00-49.75, No. 1-2 215-240 lbs. 47.00-48.10, No. 2-3 200-250 lbs. 46.00-47.00, No. 2-4 200-270 lbs. 42.00-46.00. US No. 1-3 290-600 lbs. sows 35.75-39.00, few 41.50, No. 2-3 250-600 lbs. 30.00-35.00. Boars 29.50-32.00.

FEEDER PIGS 161. US No. 1-3 20-35 lbs. feeder pigs 22.00-34.00, 35-50 lbs. 32.00-39.00, one lot 75 lbs. at 43.00 - all per head.

SHEEP 1: One Choice 60 lbs. wool lamb at 71.00. **GOATS 10:** Large 30.00-57.00 - all per head.

Indiana Livestock

Homer City, Pa.

Thursday, January 30

Report supplied by PDA

CATTLE 220. Steers steady to weak, cows .50-1.00 higher; Choice 56.75-60.25; Good 52.00-57.00; Standard 44.00-52.00; Choice heifers 55.00-60.75; Good 50.00-55.00; Standard 42.00-48.50; cows 38.25-42.25; Cutter & Boning 35.75-39.50; Canner & Cutter 30.00-36.00; YG No. 1 bulls 1200-1860 lb. 45.00-50.25; few No. 2, 900-1300 lb. 40.00-43.00.

FEEDER CATTLE: Steers few Med. No. 1, 500-750 lb. 48.00-55.00.

CALVES 151. Vealers Standard & Good Grade 5.00-7.00 higher; few Good 61.00-78.00; 90-120 lb. Standard & Good 46.00-56.00; 60-85 lb. 40.00-46.00; holstein bulls 90-120 lb. 70.00-97.00.

HOGS 136. Weak to .50 lower; No. 1-2, 220-255 lb. 47.00-47.50; No. 2-3, 220-250 lb. 45.00-45.75; sows No. 1-3, 380-600 lb. 39.50-41.00; No. 2-3, 350-550 lb. 38.00-40.00.

FEEDER PIGS 16. Few 35 lb. 23.00 per head; lot 70 lb. 38.00 per head.

SHEEP 5. Few Good 80-85 lb. 60.00-63.00.

East Coast Carlot

Wednesday, January 29, 1986

Report supplied by USDA

Compared to Tuesday's close: Special fed veal generally steady in light test. Good and Choice boning Veal unevenly steady; Inshipped remains untested. Compared to last week, Lamb firm in light test. Boneless Beef untested; However firm undertone indicated.

Veal Carcass Choice & Prime (Special Fed) Hide On 75 Head

220-280 lbs. Few 178.00-180.00, generally steady.

NORTHEASTERN SUPPLIERS

290 Head

65-75 lbs. 76.00-78.00, few 81.00, unevenly steady.
55-64 lbs. 74.00-76.00, few 79.00.
45-54 lbs. 72.00-74.00, few 77.00.
35-44 lbs. 70.00-72.00, few 75.00.
34 lbs. down 68.00-70.00, few 73.00.

Inshipped

No sales reported.

Lamb Carcass Choice and Prime 1 Load

Boxed Vacuum Packed 60 lbs. down 152.00, pt. ld., firm with last week.

55 lbs. down 155.00, pt. ld., no comparison.

Lamb Carcass Choice and Prime 1 Load

55 lbs. down 150.00, firm with last week.

Jersey Shore, Pa.

Thursday, January 23

Report Supplied by Auction

Return to Farm Calf 60.00-104.00.

Good Veal 60.00-90.00.

Common Veal 31.00-59.00.

Choice Steers 58.00-63.00.

Good Steers 54.00-57.00.

Common Steers 39.00-53.00.

Commercial Cows 36.00-41.50.

Canners-Cutters 33.00-38.00.

Shells 32.00-32.00.

Choice Heifers 52.00-58.00.

Good Heifers 47.00-51.00.

Common Heifers 37.00-46.00.

Good Feeders 50.00-56.00.

Common Feeders 28.00-49.00.

Bulls 42.00-48.00.

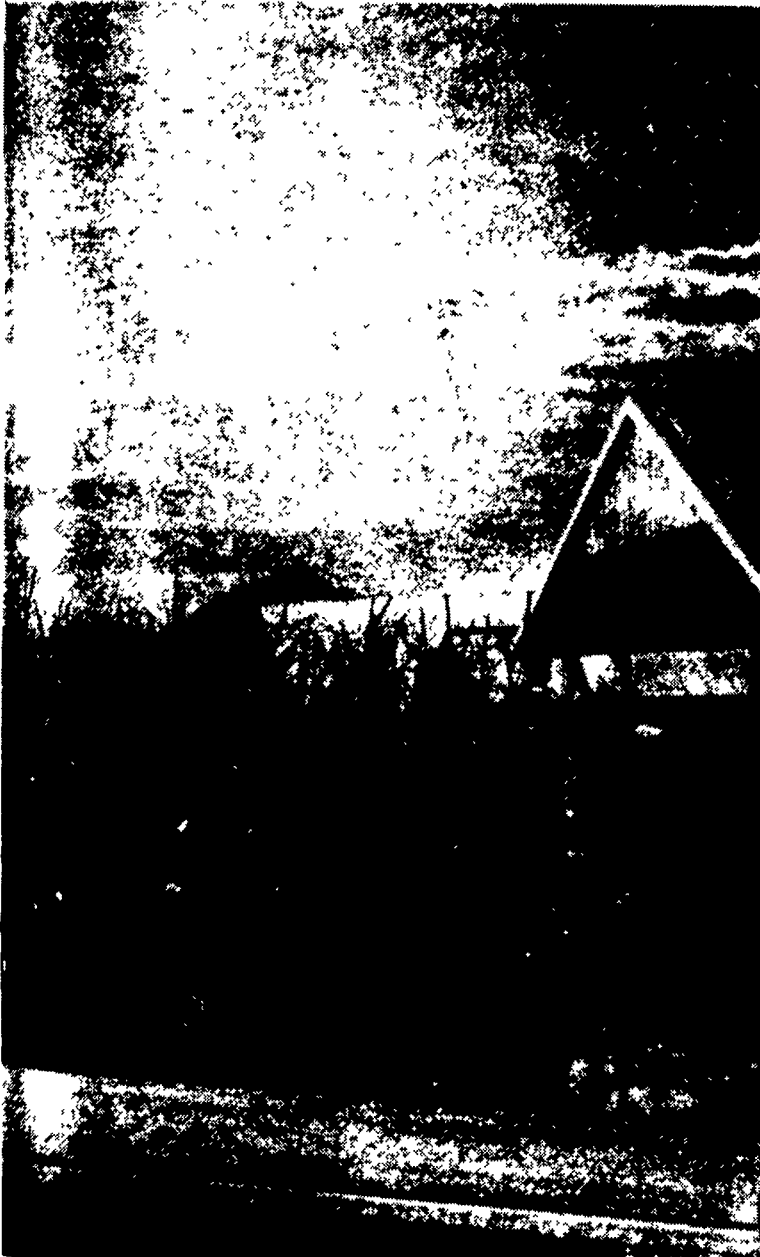
Good Hogs 47.00-47.75.

Heavies 38.00-41.00.

Sows 35.00-38.00.

Lambs 64.00-73.00.

Eggs 60.00-71.00.



Start every day feeling good... with the best from Funk.

Some next summer, you'll know you've made a wise management decision. You'll be growing hybrids with a reputation for delivering what farmers want - consistent high yields. That's exactly what you can expect from these hybrids. **New G-4326.** Strong overall performance puts this 10-105 hybrid in the must-plant category for many farmers. It offers competitive yields for its early maturity along with strong stalks and easy harvesting. **New G-4440.** Several years of testing prove G-4440 can yield right up at the top of its 110 lb. class. It's been delivering this high performance in our test plots in southern Pennsylvania

as well as the Corn Belt. Big, showy ears on fast-growing plants make it a roadside eye catcher.

G-4594. Wide adaptability and performance under heat and drought make G-4594 a wise addition to anyone's corn program. You'll really like its large, girthy ears...and the way it stands tough through harvesting.

Three of the best. There's no better way to start every day.

Hoffman Seeds, Inc.,
Landisville, PA. 17538



The limitation of warranty and remedy on the tag attached to each bag of Funk's G Hybrids sold is part of the terms of sale thereof.

Funk's G and design is a registered trademark of Ciba Geigy Corporation. Funk's is a brand name. Numbers identify varieties.

Performance you can bank on.

WARMER UPPER INSULATED BOOT

SIZES 7 1/2-13 D EE

Sizes and widths vary by style

2195

INSULATION KEEPS COLD OUT WARMTH IN!

You've earned your Wings!

Red Wings BOOKS SHOE SERVICE

107 E STATE ST
QUARRYVILLE PA 17566
717 786 2795
CLOSED WEDNESDAYS

Grow corn, not birds.

Treat with BORDERLAND BLACK Bird Repellent.

- Prevents crop loss
- Effective
- Inexpensive
- Fast & Easy

BORDERLAND PRODUCTS INC.

TED WALTZ

Livestock Hauling Local and Long Distance

111 Little Washington Rd. Call Evenings
Downingtown, Pa. 19335 (215) 942-3324