

# AGWAY DAIRY MEETING

**GOOD 'N PLENTY RESTAURANT  
TUESDAY, FEBRUARY 4, 1986**

**10 AM - MEETING BEGINS  
LUNCH - FAMILY STYLE**

**CALL FOR RESERVATIONS  
NEW HOLLAND AGWAY 717-354-4526  
SALUNGA AGWAY 717-898-2248  
QUARRYVILLE AGWAY 717-786-2126  
CALL BEFORE JANUARY 29**



**James J. Pullins  
Manager Feed Sales  
Distribution Services,  
Agway, Inc.**



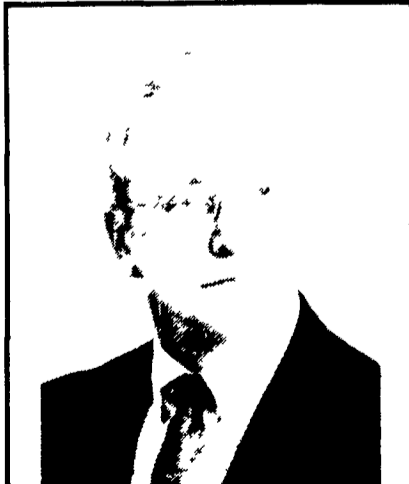
**Allan Cornman  
Regional Dairy Specialist  
Agway Inc  
Graduate of Penn State University  
M S Degree Virginia Polytechnical  
Institute**

A highly qualified individual working on farms in South Eastern Pennsylvania. Allan will discuss both dry cow and heifer management

**Dr Lewellyn S. Mix  
Director, Farm Management  
Research & Development,  
Agway Inc  
Graduate Cornell University  
Ph D University of Minnesota  
Co Author of three editions of  
Profitable Dairy Management  
Author of numerous articles on  
Dairy Herd and Farm Management  
Author of Dairy Update column in  
Agway Cooperator Chairman of  
New York Holstein Milk Marketing  
Committee**



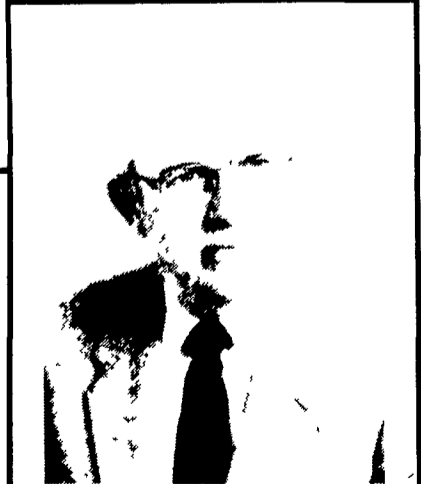
Dr. Mix will discuss many key factors of profitable dairy management while he presents an update of the dairy situation



**Dr. Darwin G. Braund  
Director, Dairy & Livestock  
Research & Development,  
Agway Inc  
Graduate Penn State University  
M S University of Wisconsin  
Ph D Michigan State University  
Directs all dairy and livestock  
research and development for  
Agway Inc**

Dr. Braund will discuss Agway's commitment to dairy research and development and the many major results that make Agway the technological leader in dairy nutrition today.

**Dr Kendall L. Dolge  
Manager of Nutrition and Quality  
Assurance, Agway Inc  
Graduated from University of  
Connecticut  
MS University of Connecticut  
Ph D Cornell University  
Member American Dairy Science  
Association Member American  
Society of Animal Science  
Member Board of Directors  
Eastern Federation of Feed  
Manufacturers**



Dr. Dolge will present Agway's Feed line up to you in a way that will be both challenging and thought provoking.

**Working for people who work the land**