

**32 MISCELLANEOUS**

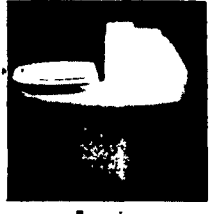
186 moving quilts, 72x80, \$6 a piece. 215-646-9057.

**THE DRY TOILET**

**Self-Contained Composting Toilet Needs No Water Or Chemicals**

Replaces conventional septic systems with a self-contained bioconversion appliance • Eliminates wastewater discharge

- Constructed from rugged stainless steel and non-porous plastic
- Features positive venting for odorless operation
- Easily maintained
- The compact HUMUS 80 occupies only 25"x33" of floor space



**Pump Services, Inc.**

157 Knoxlyn Rd., Gettysburg, PA 17325  
(717) 334-0224 or (800) 242-3909

Winchester model 12, 12 gauge, 28 modified, \$425.; Remington model 11-48, 12 gauge, 28 modified, \$250. 717-786-2043. Lancaster County.

**New & Used Wood & Coal Stoves**

Furnaces, Boilers, Over 50 Models. Coal In Kegs Heat Reclaimers. Gas Sniffers. WE TAKE TRADE-INS. Old Columbia Cookstove Parts. **HIESTAND SUPPLY CO.** Box 96 Marietta, PA 17547 (717) 426-1921

Snow plow, 9' to fit large truck, lights, pump included, \$750. Northampton Co. 215-262-6183.

US Berkel 170D stacking slicer; Victory commercial 42 cu. ft. upright display freezer, excellent condition. Chester Co. 215-857-3621.

Wanted: Broom making machine. Ben S. Glick, RD 1, Box 4, Witmer, PA 17585.

**34 AUTOS**

1974 GMC school bus, immaculate. Call 201-735-8389 after 6:30 PM.

1979 Passenger Van. Hauls 15 passengers, in good condition. Reasonable offers will be considered. Call Jess, 717-397-3571.

FOR SALE: 1980 VW Rabbit diesel, black, 46,000 mi., \$2,350. 717-865-3488.

Volkswagon parts, 1957 to 1974, Beetles, Karman Ghias, Vans, Square Backs. 717-786-2043. Lancaster County.

**35 TRUCKS AND TRAILERS**

'73 Chevy Titan, 90 cab over, tractor, tandem axle 903, Cummings engine, 13 speed transmission, 10:00x20 tires, Hendrickson suspension, \$6,000 with wet line; \$5,500 without. 717-584-2282 or 584-2274.

'80 Chevy C30 4x4 w/Koenig utility body, 350 4 spd., PS, PB, lock out hubs, AM-FM, 9,200 GVW, excellent condition. \$6,500. 717-733-2873

'81 Chevy heavy duty 1/2 ton pickup, 350 4 spd., PS, PB, 8,600 GVW, regular gas, \$5,450. 717-733-2873

'81 GMC 1/2 ton, 4x4 pickup, 6 cyl. heavy duty 4 spd, PS, PB, AM-FM. \$5,900. 717-733-2873

'82 Chevy Luv diesel, 4x4 pickup, 4 spd., AM-FM, lock out hubs, 24,000 miles, 1 owner, like new. \$4,950. 717-733-2873

'82 Dodge 150 Club Cab pickup, 318 heavy duty 4 spd., PS, PB, AM-FM. \$5,700. 717-733-2873

'83 Chevy 1/2 ton pickup, 6 cyl., 3 spd., PS, AM-FM, 36,000 miles, excellent condition. \$4,950. 717-733-2873

'83 Ford F250 1/2 ton, 4x4 pickup, 300 6 cyl., heavy duty 4 spd., PS, PB, AM-FM, lock out hubs, 30,000 miles. \$8,750. 717-733-2873

'83 Ford Rancher, grey paint with topper, \$3,800. 717-733-4449.

'84 Chevy Silverado, heavy duty 1/2 ton pickup, 350 auto., PB, PS, PW, DL, cruise, tilt, air, AM-FM, dual tanks, 8,600 GVW, regular gas. \$9,950. 717-733-2873

'84 Ford F350 4x4 Crew Cab pickup, 351 4 spd., lock out hubs, PS, PB, dual tanks, AM-FM, 9,200 GVW. \$10,500. 717-733-2873

'84 GMC 3500 1 ton, dual wheel pickup, 350 4 spd., PS, PB, 10,000 GVW, excellent condition. \$9,700. 717-733-2873

6,000 gal. tank trailer w/good rubber, wet line removed from freightliner. Sealed bids by Feb. 6. More info., 215-445-5165.

'70 Chevy rollback, 366 engine, 5+2SP, Maxi brakes, Grove 24' rollback bed, excellent condition. \$11,500. Fisher Spray Painters, 667 Hartman Station Rd., Lancaster, PA 17601. 717-393-6530.

1971 40' Great Dane Reefer w/stainless steel body on 20" tires, Thermo King, like new, \$5,000. 301-820-2117

1977 LN800 Ford 391 motor, 5 spd., 2 spd. rear, low mileage on motor, 21' Eby aluminum livestock body, good running truck. 814-695-6177

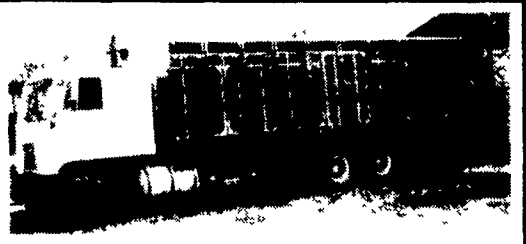
1978 Chev. model C60, 74,000 miles, \$2500. 1978 Chev. model C60, 62,000 miles, \$2500. 1979 Int'l. model 1724, 57,000 miles, \$5,000. 1979 Int'l. model 1724, 60,000 miles, \$5,000. 301-574-2074.

1981 Ford F100, 6-cyl., 3-speed, 34,000 miles, radio, new radial all-season tires, white wagon wheels, 717-349-2664. Fr. Co.

1983 F350 XL Ford diesel, 4WD, w/like new Eby aluminum livestock body w/many extras, 29,000 mis. John Strawbridge, 301-941-1122.

1970 Ford F350 roll back, 14' Schwartz body w/ hydraulic drum winch, good condition. Asking \$4,500. Call Dave, 717-784-0250 between 8 & 5.

1967 F800 Ford truck w/new motor, snow plow cinder spreader, runs great, \$4,000. Will separate. Hunt. Co. 201-995-4275 eve.



**GMC TRUCK**

Equipped with roller cages. Will haul between 4,800 and 5,800 birds/load. Perfect rig for grower which raises their own starter pullets and layer operation. Priced to sell. All reasonable offers to be considered. Truck in excellent condition. Call for appointment to see.

717-397-3571  
Ask for Jess

**SAVE BIG BUCKS ON OUR TRUCKS**



**FORD F350 Diesel or Gas**

**ALWAYS IN STOCK EBY ALUMINUM BODIES**

Immediate Delivery  
**NEW HOLLAND**  
Route 23, New Holland, Pa.  
717/354-4901



**Moritz and Monarch Trailers Horse and Stock**

Brakes Both Axles 1986

**Bumper**

REC - 10'	\$1,950
RHB - 12'	\$2,200
RHB - 14'	\$2,300
RHB - 16'	\$2,400

**Gooseneck**

ECG 12'	\$2,800
ECG 16'	\$3,200
ECG 20'	\$3,500

**Fishers Trailer Sales** 717-242-0941  
Lewistown, PA

Mark VII - Pickups - Broncos - Bronco II - Stake Body - Crew Cab -

**SHEEHY FORD LINCOLN MERCURY INC.**

**For All Your Farming Transportation Needs Through The F800 Series**

BRONCOS DIESEL PICKUPS CHASSIS CAB CARGO VANS 4x4 RANGERS PICKUPS  
BRONCO II SUPER CAB CREW CAB STAKE BODY BOX VANS XLT. CUSTOM VANS

**SHEEHY HOTLINE 717-272-7671**

Unless This Emblem Is On Your Car Or Truck You Probably Paid Too Much



9-9 Daily  
9-5 Sat.

Parts Dept. Open  
Daily 8-5  
Sat. 8-12

20th & Cumberland St., Lebanon

**7.9%**

ON F150 4x2 Regular Cab, Super Cab and Rangers (Not Ranger S) 12 - 48 Months

9.9% APR 49-60 Months



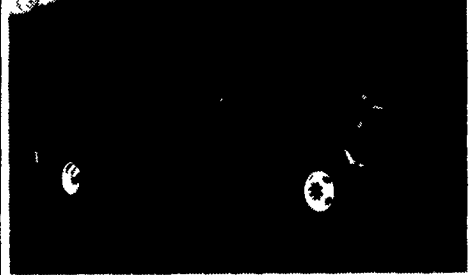
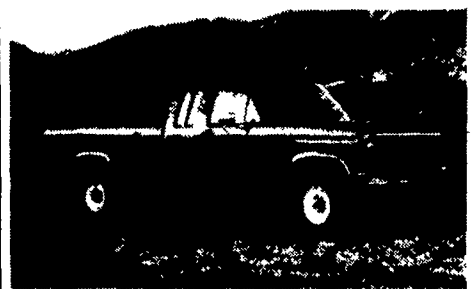
**SNOW PLOWS ARRIVING DAILY**

**7.9%**

On Tempo-Topaz and Cougars [T-Birds w/3.8 Engines Up To 42 Months

9.9% From 43 to 60 Months

*Congratulations To All The 1986 Farm Show Winners*



Custom Vans - XLT - Grand Marquis - Marquis - Tempo - Cougar - Continental - Town Car - 4x4 - Box Van - Rangers -

Lynx - Topaz - Diesel Pickups - Mustang - T Bird