

Livestock market and auction news

Carlisle Livestock

Carlisle, Pa.

Tuesday, Jan. 21

Report supplied by auction

CATTLE: Steers 1.00 lower spots 2.00 lower than last week. Low Choice 58.00-59.00, Good 50.00-55.25, Medium Good Holsteins 45.50-47.75, Medium 49.00-Down. Heifers: Mostly holsteins offered 1.00 to 2.00 lower. Medium 44.50-46.00, Utility 33.85-42.50. Cows: Mostly steady. Good 36.00-39.10, Medium 34.00-35.75, Big Middle 32.75-38.00; Shelly 31.00-Down. **FAT Bulls:** Good 45.50-49.00; Medium 39.25-44.25.

FEEDER CATTLE: Steers (300-550 lb.) 2.00 higher. Good 52.00-57.00; Medium 49.00-Down. Steers (600-850 lb.) Few Utility 38.00-44.50. Heifers (all weights) 1.00 higher. Good 44.00-48.00; Medium 37.00-43.00. Bulls (all weights) 2.00 higher; Choice 57.00-60.00; Medium 44.00-47.50.

VEAL CALVES: Choice 85.00-106.00; Good 70.00-84.00; Medium 56.00-69.00; Light/standard 45.00-

55.00, few weak 44.00-down; Farm Bulls 85.00-110.00.

HOGS: Barrows & Gilts 1.00 lower. (930 hd.) (US No. 1-3) 210-250 lbs. 44.00-46.00; over 260 lb. 43.50-45.50; Under 190 lbs. 33.50-36.00; 2 & 3's 42.00-43.50.

SOWS: 1.00 lower on heavier sows. Over 450 lb. 36.25-38.00; under 450 36.00-44.00; 2 & 3's 34.00-down. Boars: Heavy 25.00-27.00 lb. light 35.00-38.00 lb.

FEEDER PIGS (by the hd.) 3.00 to 4.00 higher. (20-30 lbs. 18.00-31.00 hd.) (35-40 lbs. 34.00-38.00 hd.) (45-70 lbs. 46.00-53.00 hd.).

LAMBS: Choice light 75.00-85.00, Good & Choice 64.50-65.50, Med. 58.00-down.

EWES: 22.00-26.00 lb.

GOATS: (Lg) & Md. 28.00-48.00.

Next State Graded Feeder Pig Sale: Friday, Feb. 14th.

Peoria Cattle

Thursday, Jan. 23

Report Supplied by USDA

Trading slow on light to moderate supply. Bulk of receipts Monday with not enough receipts

remainder of the week for a market test. Demand light to moderate with most buying interests not aggressive for numbers slaughter steers closed 1.50 to 2.00 lower with heifers weak to .50 lower. Cows closed 1.00 to 2.00 lower. Bulls generally steady. Supply mainly good grade slaughter steers and heifers with 20% cows. Estimated receipts 1500 this week as compared to actual receipts of 1698 a week ago and 716 a year ago.

SLAUGHTER STEERS: Choice 2-4, mostly 3 1050-1250 lbs. 58.00-59.00, load and part load 60.00; 975-1050 lbs. 57.00-58.50. Choice 3-5 1100-1200 lbs. 56.50-58.50. Mixed Good and Choice 2-3 1000-1200 lbs. 56.00-57.50. Good 2-3 900-1050 lbs. 53.00-57.00.

SLAUGHTER HEIFERS: Choice 2-4, mostly 3 950-1150 lbs. 57.50-58.50, few muddy 56.50-57.00; 875-950 lbs. 54.00-56.50. Choice 3-5 1000-1100 lbs. 54.00-55.50. Mixed Good and Choice 2-3 900-1100 lbs. 54.00-56.50. Good 2-3 800-950 lbs. 52.00-55.50.

COWS: Breaking Utility, 2-3

32.00-34.00. Cutter and boning utility 1-2 30.00-33.00, high dressing 34.00-36.00. Canner and low cutter 27.00-30.00.

BULLS: YG 1-2 1500-2400 lbs. 41.00-45.00; 1200-1500 lbs. 38.00-43.00, few thin 35.00-38.00.

Farmers Livestock Auction

Duncansville, Pa.

January 20, 1986

Report Supplied by PDA

CATTLE 167. Choice 55.00-57.50, High Good & Low Ch. 51.25-54.00, Good 46.50-49.50, Good & Choice holsteins 47.00-49.75, Standard 44.00-46.75, Utility 41.25-43.50. Choice sl. heifers 52.00-56.00, Good 47.00-51.00, Standard 44.00-46.50, Utility 39.50-43.00. Breaking Ut. & Commercial sl. cows 38.25-41.25, Cutter & Boning Ut. 35.50-37.50, Canner & Low Cutter 32.00-34.50, Shells down to 28.00. Choice sl. bullocks 46.00-48.75, Good 44.25-45.50, Standard 42.00-44.00, Utility 38.75-41.50.

FEEDER CATTLE: Steers Good 49.00-56.00, Standard 42.00-47.00, Heifers Good 47.00-51.00, Standard 38.00-45.00, Bulls Good 48.00-54.00, Standard 41.00-46.00.

CALVES 202. Choice 73.00-84.00,

Good 64.00-71.00, Standard 56.00-62.00, Standard & Good 90 lb. to 130 lb. 51.00-58.00, Utility 60-80 lbs. 45.00-49.00.

FARM CALVES: Holstein bulls 90-130 lbs. 82.00-106.00, Holstein heifers 90-130 lbs. 50.00-55.00.

HOGS 82. US No. 1-2 220-240 lbs. barrows and gilts 47.00-48.25, No. 1-3 200-260 lbs. 46.00-46.75. US No. 1-3 350-600 lbs. sows 38.25-40.50, No. 2-3 350-600 lbs. 36.00-38.00. Boars 28.00-29.50, Light weights 30.75-33.00.

FEEDER PIGS 5. US No. 1-3 20-30 lbs. feeder pigs 19.00-21.00 per head.

SHEEP NONE. **Goats** NONE.

New Holland Horse

New Holland Sales Stables

Monday, Jan. 20

Report supplied by auction

Reported receipts of 220 head of horses, mules and ponies.

Market: Steady.

Driving horses 275.00-725.00.

Riding horses 175.00-500.00.

Lightweight killers 165.00-225.00;

Heavyweight killers 275.00-375.00.

Mares ponies 30.00-65.00; Colts

10.00-20.00; Gelding ponies 30.00-

65.00.

Larger ponies 90.00-175.00.

Green Dragon Livestock Sales

Location: Ephrata RD 4. 1 mile N. on North State St., Ephrata.

COWS COWS COWS SALE EVERY FRIDAY

Lots of good Northern Feeder & Stockers. Slaughter Cows - Bull Steer, Veal-lamb.

11:00 A.M.-Beef Sale 200-300 each week.

1:00 P.M.-Dairy Sale.

7:00 P.M.-Small Animal Sale.

For Special Sales and Herd Dispersals on farm or at our barn or other market information call: Office 717-733-2444, Home 717-838-4318.

WALTER H. RISSER, Proprietor

All out of state and new buyers must have cash or certified check or current letter of credit from bank.

ATTENTION FARMERS

The New Way To Market Your Livestock

HATFIELD MOYER
PACKING CO. AND PACKING CO.
Will Receive Hogs Will Receive Cattle

At The

BLAIR-BEDFORD
BUYING STATION

RD 1 Martinsburg, Pa.

MONDAYS - Hogs 8 AM to 11:30 AM
Cattle & Calves 8 AM to 3 PM

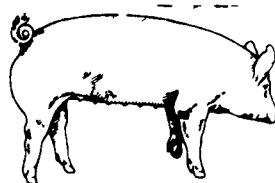
THURSDAYS - Cattle & Calves
8 AM to 3 PM

- No commission or yardage fees deducted from check
- Livestock weighed and paid for immediately
- You may call our office sale day for prices

DALE R. HOOVER - Owner

Business 814-793-3077

Residence 814-793-2657



EMERY'S BUYING STATION

OPEN TO RECEIVE YOUR MARKET HOGS

AT THE GREEN DRAGON MARKET
RD 4, EPHRATA, PA 17522
1 MILE NORTH OF EPHRATA
ON NORTH STATE STREET.

HOURS: MONDAY, TUESDAY, and
WEDNESDAY 6:00 A.M. to 11:30 A.M.
215-458-5677 Residence
717-733-9648 Office

**YOU ARE PAID FOR YOUR
HOGS IMMEDIATELY**

Ken & Lois Emery, Proprietors

HAY & STRAW SALE

12:00 Noon

Every Wednesday
Westend of Avondale
at the intersection of
Baltimore Pike and
Route 41.

Harvey Z. Martin
215-268-3604
(Office)
215-445-5303
(Residence)

KING'S AUCTION, KIRKWOOD

Hay, Straw and
Grain Auction

EVERY TUESDAY

12:00

Located Rt. 472 5 miles south
of Quarryville or 6 miles north of
Oxford at Shaub's Auction
House

Lloyd H. Kreider,
Auctioneer
AU-000513L

No out of state checks
**ALL TRUCKERS AND
FARMERS WELCOME**

CATTLE SOYBEANS

**FUTURES AND
OPTIONS**

Call for information
plus our
FREE

MARKET LETTER
featuring a
**Special Situation
Suggestion!**

SPECIALIZING IN

COMMODITIES EXCLUSIVELY

* Volume Discounts

Available

IN PENNSYLVANIA

CALL

(800) 322-9274

ALL OTHER AREAS

(800) 523-9388

ALLENTOWN

(215) 821-8111

Rosenthal &

Company

2200 Hamilton Street,

Suite 102,

Allentown,

Penna. 18104

Members of All Principal

Commodities Exchanges



"WANTED" LEGHORN FOWL



NEW SANITIZED CAGE CART SYSTEMS OR COOPS

Call Richard Sechler,
Tom Feger, Nelson Legge
for quotations

PA Watts # 800-342-2249
or call collect 215-488-7617

SECHLER'S POULTRY, INC.

Box G, Strausstown, PA 19559