

Bucks Co. DHIA

BUCKS COUNTY DHIA December, 1985

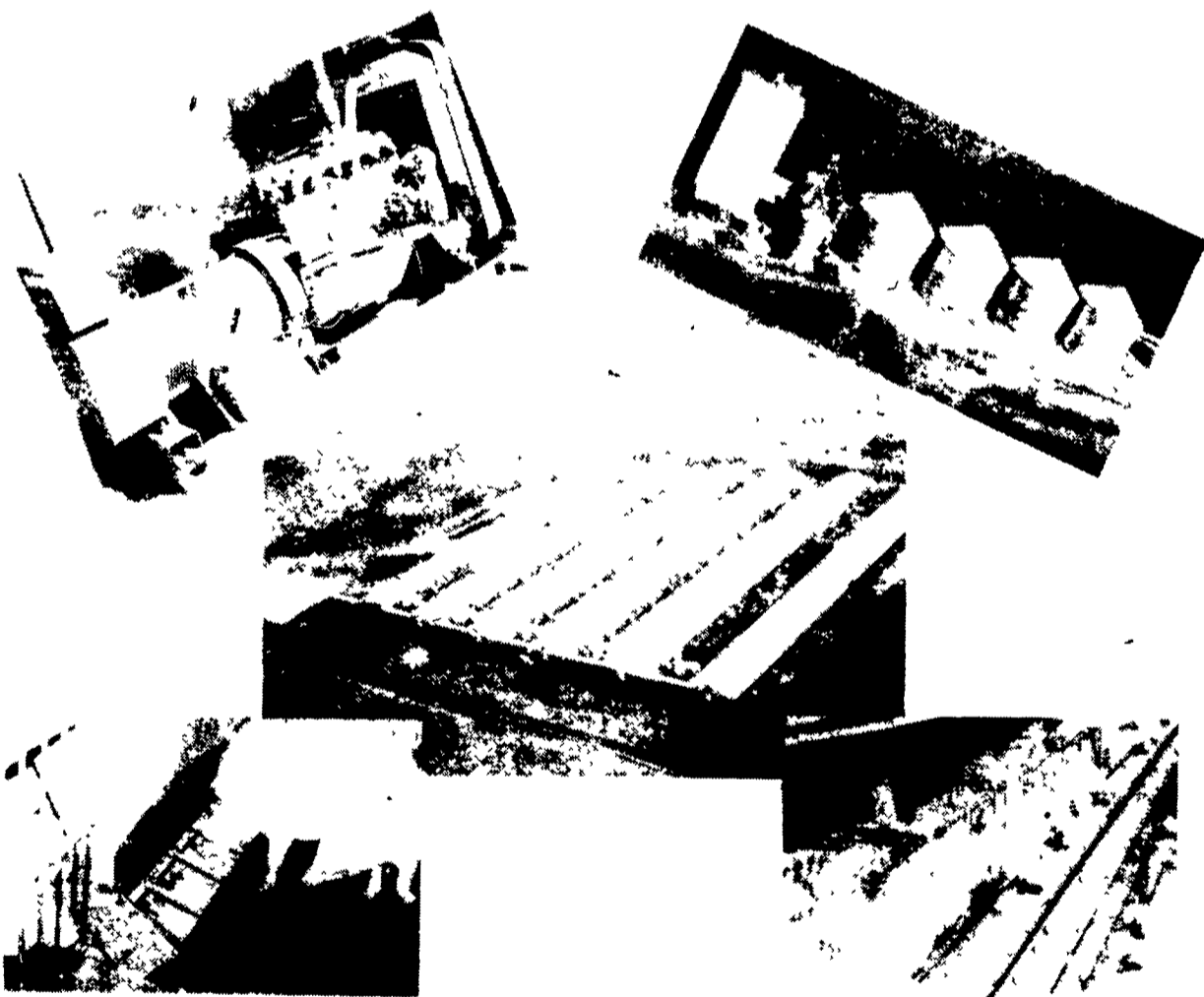
Theodore S Wilson	B3	50.1	86.0	20,236	731	Roy Shull	3	9-09	305	23,956	3.8	911	Happi Hollow Farm	3	5-04	305	20,675	4.1	841
Richard O Smith	2	63.1	89.1	15,603	721	179	3	6-09	305	19,633	4.1	811	85	3	4-00	281	21,307	3.7	788
J Howard Roth	3	30.4	87.4	19,002	706	339	3	5-08	305	21,125	4.0	846	Joe & Linda Ford	3	4-00	281	21,307	3.7	788
Wm & Eleanor Gunser	3	67.7	89.4	19,377	706	382	3	5-05	305	25,027	3.4	859	Buffy	3	6-09	305	23,599	3.5	815
Willow Ridge Farm	8	49.1	88.1	18,497	702	399	3	2-02	305	22,204	3.7	814	Harry E Thompson	3	6-09	305	23,599	3.5	815
Robert Donald Crouse	B3	68.0	88.7	18,855	702	590	3	10-11	305	24,194	3.6	867	Calico	3	4-03	305	25,293	3.0	757
Harry E Thompson	3	35.4	88.4	19,640	697	Theodore S Wilson	3	5-01	305	22,150	3.9	853	David R Walton	3	4-01	305	19,999	4.0	793
Raymond Gross	3	45.8	87.9	19,080	692	Rande	3	4-01	277	23,271	3.6	837	Chance	3	5-02	305	24,043	3.2	759
Delaware Val College	3	37.3	86.6	18,943	691	Debbie	3	4-02	303	22,403	3.6	810	The Farm Dairy	3	4-07	305	25,505	3.2	813
Moyers Village Farm	B3	82.1	87.3	18,222	684	Trisha	3	6-11	305	20,814	3.7	769	307A	3	3-01	302	20,933	3.8	788
Walter & David Wurster	3	57.6	90.4	19,913	683	Penrose and James	3	7-05	303	21,366	3.6	759	Breezyvale Farms	3	5-02	305	24,043	3.2	759
Crooked Acres Dairy	3	57.4	87.0	19,689	682	Jingies	3	4-02	305	24,255	3.9	953	Mara	3	4-07	305	25,505	3.2	813
Delaware Val College	5	11.6	90.6	15,933	681	Steven P Kline	3	4-02	305	24,255	3.9	953	Bobo	3	3-01	302	20,933	3.8	788
George & David Bishop	3	101.6	87.7	19,522	674	Jody	3	6-03	305	22,967	3.3	763	Dana	3	4-00	305	23,339	3.3	773
James Pavlica	3	41.6	86.7	18,437	663	Jolly	3	3-01	305	18,629	4.2	790	Paul L Kevin Bishop	3	5-00	305	26,612	2.9	770
Penrose and James	3	78.1	84.5	18,654	662	Ellen	3	6-03	305	22,967	3.3	763	Rosyann	3	4-00	305	23,339	3.3	773
David R Wolfinger	3	39.4	87.7	19,073	658	Willow Ridge Farm	3	3-01	305	18,629	4.2	790	Dove	3	8-05	305	19,354	4.3	839
Paul L Kevin Bishop	B3	66.8	88.0	19,128	655	174	3	6-09	305	19,165	3.9	755	Raymond Gross	3	4-02	305	25,374	3.5	896
Rushlyn Farm	3	36.2	88.9	17,212	653	227	3	7-02	305	25,834	3.4	870	Holly	3	4-01	294	20,224	3.8	765
Breezyvale Farms	3	89.8	88.0	19,384	651	Earl H Ben E Landis	3	5-06	302	17,434	4.3	758	Petunia	3	3-06	304	19,712	3.9	762
Walter & David Wurster	3	4-05	305	25,451	3.2	Bertie	3	5-06	305	19,875	3.8	753	Delaware Val College	3	2-11	305	21,026	3.7	781
Custard	3	6-06	305	17,765	4.3	Robert Barry Gehman	3	5-02	305	21,910	3.7	814	Kathleen	3	5-4	305	14,472	4.2	605
Phillip & Ed Gayman	3	6-06	305	22,753	3.4	Sandie	3	5-00	289	18,945	4.1	769	Molly	3	7-08	305	21,008	4.1	856
Stella	3	4-03	305	16,951	4.2	Beth	3	7-11	305	24,279	3.5	840	George & David Bishop	3	5-11	305	20,097	3.7	753
Duck	3	3-01	305	23,608	3.8	Joyce	3	5-10	305	20,494	3.8	785	Robin	3	4-01	282	20,208	4.1	830
Warren E Buckman Jr	3	6-03	305	19,688	4.2	Leslie	3	3-03	305	21,406	3.7	790	Bonnie	3	5-02	305	18,392	4.1	753
Nedda	3	3-04	305	19,005	3.8	Patty	3	0-00	305	19,404	3.9	750	Harold Tom Haldeman	3	4-00	305	18,488	4.3	799
Amy	3	6-03	305	19,688	4.2	Carl R Kresge	3	5-01	305	24,058	3.6	863	Mandy	3	4-00	305	18,488	4.3	799
Robert Donald Crouse	3	3-04	305	19,005	3.8	Lin	3	13-03	305	20,087	3.9	785	Carl Slack	3	4-00	305	18,488	4.3	799
Liz	3	6-03	305	19,688	4.2	Fairy	3	3-04	305	22,606	3.3	751	Karan	3	4-00	305	18,488	4.3	799
Lady	3	6-03	305	20,255	3.7	Tiddle	3	3-02	305	23,686	3.4	808							
Warren W Detweiler	3	6-03	305	20,255	3.7	Glen Dairy-R Moyer	3												
Winnie	3	6-03	305	20,255	3.7	76	3												
						James Phillips	3												
						Sandra	3												
						Wm & Eleanor Gunser	3												
						Carmen	3												
						Krystal	3												
						Belle	3												

The Systems Approach of Hershey Equipment lets you put it all together

Today's profit minded poultry, swine, and grain producers must think in terms of an automatic system.

"System thinking" can help you plan away problems before you begin, or it can help you automate away problems you now have.

Hershey Equipment Co. is geared to provide all components of the system including equipment, plumbing, electrical and building. This will assure that the pieces will fit together to form a profitable system.



Distributors For

BIG DUTCHMAN - Poultry Systems

HERSHEY - Hog Systems

BROCK - Grain Systems

KATOLIGHT - Generator Systems



HERSHEY EQUIPMENT COMPANY, INC.

SYCAMORE IND. PARK
255 PLANE TREE DRIVE
LANCASTER, PA. 17603
(717) 393-5907

Route 30 West
at the
Centerville Exit.

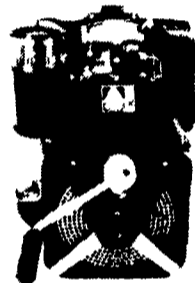
Designers of Quality Systems for Poultry, Swine and Grain Handling

Winter Specials Gasoline & Diesel Engines 15% to 25% OFF



"BETTER & BETTER"

Rope
Hand Crank
Or
Electric
Start



Industrial
&
Commercial
Quality
10-30 H.P.

Dealer Inquiries Invited
Check Our Prices On Generators
And Water Pumps

Shirk's Repair Shop

RD 2 - Box 102
Ephrata, PA 17522
717/859-2797

STEVEN SYSTEMS, INC.

HAY HANDLING EQUIPMENT

**Hay Loaders
Accumulators
Allen Rakes &
Tedders**

Model 100 "TRACTOR MOUNT"
Hay Loader



Stop In & See Us At The
Penn Jersey Tillage Conference
February 4, 1986

David O. Fink
RD 1 Box 429-F
Germansville, PA 18053
215-767-1408