

(Continued from Page D21)

East Knoll Farm					
Star	3	4	305	21,648	751
Genoa	3	7	305	19,871	779
Robert Taylor					
Donkey	3	7	305	23,063	910
Anna	3	5	305	17,840	858
Cookie	3	4	305	21,526	1110
Lorri 2	3	3	305	20,803	836
HW Russell & Sons					
32 H	3	7	305	19,559	768
33 E	3	4	305	24,404	979
Ralph & Helen Bouse					
83	3	4	305	16,729	768
Richard Wheeler					
Tricia	3	9	303	24,530	896
Ralyn	3	5	305	21,242	897
Crystal	3	5	283	22,470	760
Steve & Carol Jenkins					
Marty	3	8	280	16,312	790
Babe	3	7	297	19,104	877
Duane Lewis					
12	3	5	305	19,434	820
36	3	4	305	18,921	816
Pinetop Farm					
Carol	3	4	305	22,435	749
Charles Harris					
22	3	5	305	18,456	921
Le Canville Farm					
Patty	3	9	305	23,845	917
Tige R Luv Dairies					
56	3	5	305	19,643	823
Sheldon Millard					
27	3	4	305	22,569	919
Clay-Art Harkness					
Marbed	3	6	296	19,128	844

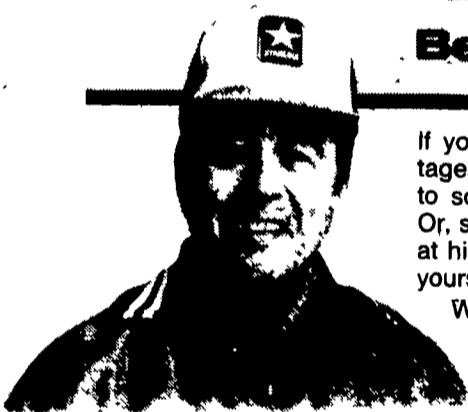
Kip	3	6	305	22,062	824
Ada	3	5	305	23,001	802
Carl McClelland					
Charity	3	7	301	21,111	829
Milly	3	5	305	19,521	774
Martha	3	4	305	21,739	750
Funny	3	4	305	21,162	843
Bob & Tom Murray					
23	3	5	305	23,566	927
92	3	6	305	26,958	872
Tom & Diane Elliott					
Sally	3	6	294	24,380	894
LJ	3	4	305	22,516	755
Raymond Hoppaugh					
Annie	3	5	305	26,396	756
Peony	3	2	305	22,058	799
Roy & Tim Beardslee					
119	3	3	305	20,337	806
Sonya	3	5	305	22,021	899
Diane	3	4	305	20,232	886
Dotty	3	4	305	21,646	932
Belle	3	4	305	22,576	895
Rosie	3	4	305	18,693	889
Karen	3	3	305	19,470	866
Raggy	3	3	305	22,943	790
Dale	3	3	305	18,868	789
Bradley Haflett					
Kathy 14	3	8	305	22,110	781
Hope 1	3	5	305	21,503	801
30	3	4	305	23,880	826
Allen Andrews					
Easter	3	8	305	24,695	876
Velvet	3	5	305	23,412	800
Ellen	3	4	305	24,002	957
Picture	3	4	286	22,177	774
Milton Sherman					
75	3	5	305	22,950	859
Earl Gamble					
Liz	3	5	305	22,251	853

Ronald Davis					
Hope	3	4	305	23,388	951
Donald Jennings Jr					
32	3	8	305	21,007	814
67	3	5	305	22,581	850
176	3	4	305	21,364	764
Snowcrest Farm					
*Pepper	3	6	305	21,549	908
Myra	3	4	305	24,820	892
James Boor					
Maime	3	5	305	19,345	857
Lewis & Lois Alderson					
Inez	3	8	305	20,453	853
W&R Vanblarcom					
84	3	5	305	22,166	991
16	3	4	305	24,195	842
99	3	3	305	23,090	767
Ben Jackson					
Pia	2	3	305	17,075	838
Leslie Freeman					
90 9130	3	7	305	21,838	810
1009126	3	7	276	19,298	791
64-8756	3	3	305	20,096	754
Harold Warner & Sons					
Bronson	3	6	305	19,228	796
Lilly	3	5	305	22,316	834
Calkins Farm					
Diane	3	4	280	22,708	759
Gary & Donna Ayres					
72A	3	6	305	24,720	885
Abraham Derstine					
Sweetie	3	7	305	23,384	767
Mary	3	5	305	21,265	813
75	3	5	305	24,352	775
Abbie 42	3	5	305	25,289	941
Michael Olsyn & Son					
55	3	0	305	21,729	763

(Turn to Page D22)

# We Make 'Em TOUGH

Because They Get Treated Rough!



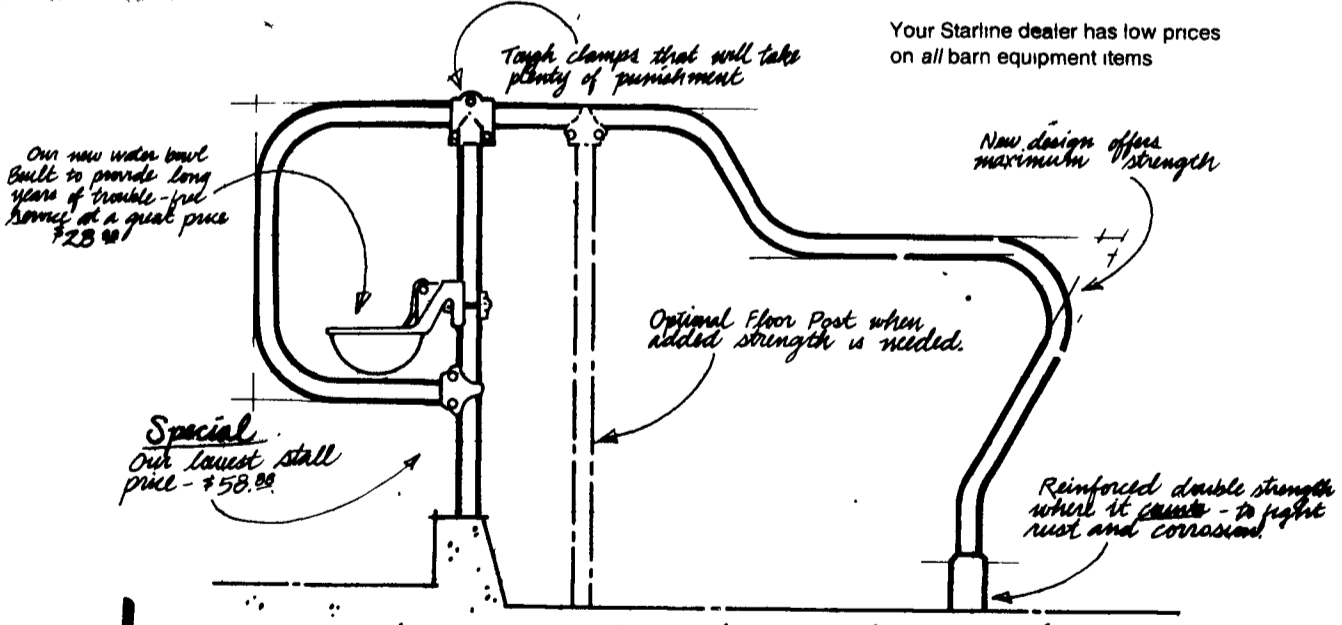
If you don't already know the advantages of Starline barn equipment, talk to someone who has a "Starline" barn. Or, stop by your Starline dealer's. Look at his equipment, then compare it. Ask yourself, "Which is my best investment?"

We're proud of the reputation Starline equipment has earned and we're making the changes and

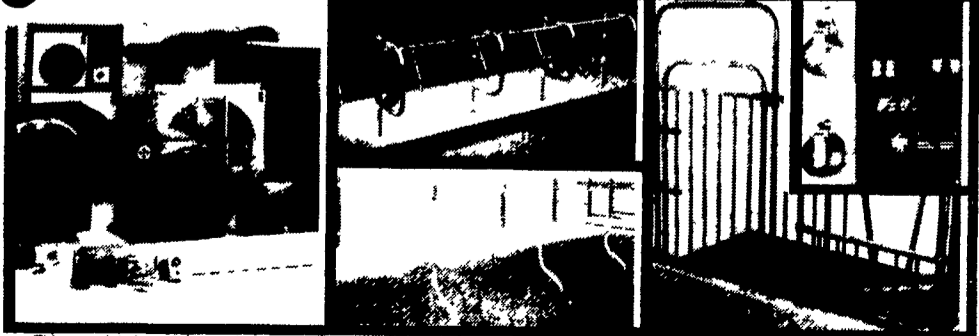
improvements needed to help make sure your efficiency is always better when you buy Starline!

And remember, the Starline barn equipment line includes drains, fans, water bowls, cow mats, stalls, stanchions, pens and all of the fittings and accessories you need for a top-quality installation.

Your Starline dealer has low prices on all barn equipment items



**New!**



This complete line of top-quality ventilation equipment enables you to choose exactly the right system for your building

Free stalls, tie stalls, stanchions and gates — all built to take it year after year

Calf pens and full-size pens designed to give you years of service — Drains, water bowls, clamps accessories

Starline Products, Inc.  
300 W. Front Street  
Harvard, IL 60033  
or call  
1-800-435-2825



## Birch Tree Care

NEWARK, DE — Do your birch trees have blotchy leaves in summer? Don't ignore this symptom which may seem minor at first — it probably signals an attack by birch leaf-miners.

These insects commonly damage gray, paper, and white birches, and may also attack black, yellow, European white, and river birches. Repeated, severe infestations can kill a tree.

A fact sheet written by University of Delaware extension entomologist Mark Graustein tells how to identify and control this pest. According to Graustein, the adult leafminer — a tiny, black fly closely related to the bee or ant but without a stinger — does no damage. But in the larval or immature stage it can mean the beginning of the end for a strong, healthy birch tree.

After blotches first appear, the entire leaf turns brown and drops from the tree. That's not the end of the problem, however, since the new leaf which replaces the dead one is particularly vulnerable to the next generation of leaf-miners.

A number of insecticides may be used to eliminate the insects. Treatment is most effective, however, during the early stages of infestation, generally mid-May, or later in June for a second generation.

Graustein urges homeowners with infested trees to spray them properly this spring. Copies of the fact sheet, Birch Leafminers, are available free from county extension offices in Newark (451-2506), Georgetown (856-7303) and Dover (736-1448).