

NFU challenges new ruling on FmHA operating loans

WASHINGTON — If implemented, a proposed rule would deny virtually all USDA Farmers Home Administration operating loans to farmers, officials of the National Farmers Union charged today. In a hand-delivered letter, they asked ranking members of the congressional agriculture subcommittees on credit to draft and introduce immediate legislation preventing the Secretary of Agriculture from implementing the rule.

Letters were delivered to Senator David Boren, Okla., Senator Mark Andrews, N.D., and

Congressman Ed Jones, Tenn.

As proposed, the rule would allow the secretary and his designee to halt FmHA direct and/or guaranteed loans to farmers intending to raise crops or livestock deemed to be in surplus supply.

While in agreement that commodity production must be reduced, NFU advocates that more appropriate supply management programs would be additional acreage reduction requirements or paid diversions.

If the proposed rule is im-

plemented, NFU President Cy Carpenter said, "We are concerned that given USDA's budget restraints, such action will be taken to the limit. Carried to the extreme, this rule would allow FmHA to deny to any producer an operating loan for this 1986 plantings of any of the basic commodities plus soybeans and livestock."

Denial of operating loans at this time will simply exacerbate the agricultural and rural crisis and force many more producers out of business, he said.

"We strongly urge Congress to prevent this rule from being implemented. We also urge concerned farmers and ranchers to

express their opposition by writing to Office of the Chief, Directives Branch, FmHA, USDA, Room 6348

South Building, 14th and Independence Avenue S.W., Washington, D.C. 20250 before Jan. 31, 1986," Carpenter said.

Lancaster Co. DHIA

(Continued from Page C9)

Jonas E Stoltzfus Wilma 37	RH	6 9	305	25 509	3 4	855
Thomas C Lapp Tracy 15	RH	8 9	305	26,741	3 2	854
Lolly 26	RH	7 0	305	21 345	3 9	824
Tery 88	RH	4 6	293	20,107	4 1	823
Spring Lawn Farm 45	RH	5 7	305	20,395	4 2	853
49	RH	5 3	305	24,143	3 5	835
31	RH	5 10	305	22,884	3 5	809
122	RH	6 3	294	20 843	3 8	802
Clair Oberholtzer Deb	RH	4 1	305	25,021	3 4	852
Amos B Lantz Black	RH	8 1	305	24 234	3 5	852
LeRoy S Weaver Darla	GrH	4 2	305	24 741	3 4	851
Fanny	RH	4 4	304	24 461	3 4	827
Belle	RH	8 4	305	21 443	3 8	822
Enos B King Victoria	RH	3 2	305	24 414	3 5	851
LeRoy M Stoltzfus Trixie	RH	6 10	305	22 756	3 7	850
Glenn M Shelly 23	GrH	7 2	305	25 092	3 4	848
Norman B Rutt Son 7	GrH	3 2	305	22 016	3 8	847
Riehee Farm Elizabeth	RH	7 10	305	22 738	3 7	846
Nelson R Habecker 6	GrH	6 4	291	20 078	4 2	846
JS Smucker & Sons Farm#2 362	RH	6 1	304	25 015	3 4	842
Daniel M Stoltzfus Babe	GrH	3 8	305	24 629	3 4	842
E Richard Bruckhart Gazer	RH	6 8	305	22 420	3 8	842
Jonas O Senseng 3	GrH	3 10	305	22 096	3 8	842
John S Zimmerman 24	GrH	4 2	305	20 767	4 0	841
John F Petersheimn 60	RH	6 0	305	22 487	3 7	840
Philip Horst Martha	GrH	3 2	305	25 548	3 3	838
Marbro Farm Sally 7	RH	5 6	305	25 142	3 3	837

**QUALITY
DIAMONDS
AT
WORKING
MAN'S
PRICES!**



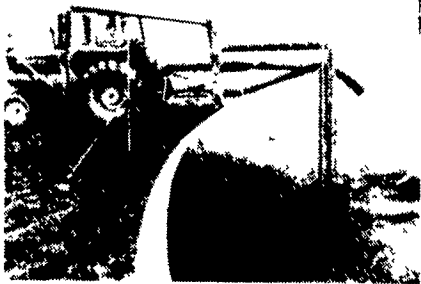
**1/4 CT.
DIAMOND
RING
\$295.00
(Reg. \$450.00)**

Write, Call or
Stop In...

**HEISEY
JEWELERS
5 N. Main St.
Manheim, Pa. 17545
717-665-6575**

HOULE

**LIQUID MANURE EQUIPMENT
A Pump For Every Need
MAXI-PUMP**



A Big Centrifugal Pump Designed To Move Large Volumes Of Material With Low Horsepower. Can Be Used As Lagoon Pump With Limited Bedding. Works Excellently As A Side-Mounted Pump In Above Ground Storages. Prices Start At \$1,830 w/PTO CALL OR WRITE TODAY:

US AGRI-SYSTEMS

**MANURE MANAGEMENT SPECIALISTS
3053 Barren Rd Oxford, PA 19363
(800)222-2948 (301)398-2948**

**HAY, STRAW,
EAR CORN,
PEANUT HULLS**
At farm or delivered in any quantity as you require.
**Ebensshade
Turkey Farm**
(America's Oldest)
Paradise, Pa.
(717) 687-7631

BUY DIRECT AND SAVE

Big-Strong 2 1/2" Galvanized Free Stalls \$29.50 ea.

WE SHIP OR DELIVER ANYWHERE

**UD'ER D'LITE
STALL FABRICATORS**

Oxford, P.A.

Toll Free 1-800-222-2948 Local 301-398-2948

AUTO/TRUCK DIESEL TREATMENT totally disperses water.

It eliminates water even better than water separators. It also keeps injectors clean, improves engine efficiency, and contains no harmful alcohol. Use it in every tankful all year 'round. IT COSTS SO LITTLE TO PROTECT SO MUCH. Use POLAR POWER from Dec. thru Feb to prevent waxing and gelling. It also dispenses water. GAS TREATMENT treats leaded & unleaded gasoline. Totally disperses water and increases mileage.

DIESEL FUEL INJECTION & TURBO CHARGER SPECIALIST

MILLER DIESEL INC.
6030 Jonestown Rd., Harrisburg, Pa. 17112
717-545-5931 Interstate 81 Exit 26

FPPF FUEL POWER Diesel Fuel Treatment
CONCENTRATED TO TREAT 240 GALLONS OF DIESEL FUEL
8 OZ. (230 LITERS)
THE NUMBER ONE YEAR ROUND BEST SELLER

DIESEL TUNE-UP AVAILABLE
Call for Appointment

KATOLIGHT!

THE PIONEER IN BRUSHLESS P.T.O. ALTERNATORS!! YEARS OF EXPERIENCE HAVE GONE INTO THE ADVANCED DESIGN OF THESE POWERFUL BRUSHLESS ALTERNATORS. THE RESULT IS THE UNIQUE COMBINATION OF...

★ **300% Surge Capacity:** For Superior motor starting capabilities

★ **Totally Brushless Design:** For greater reliability and more positive voltage build-up after long periods of idleness

24 HR. EMERGENCY SERVICE BY RADIO DISPATCHED SERVICE PERSONNEL

Model Selection Chart

Model No	Watts	Momentary Surge Watts	Minimum Required HP	Volts	C B Amps	Phase	Wire	Approximate Wt Net Lbs	Ship Lbs
15LR1	15 000	45 000	25	120 240	60	1	3	425	490
25LR1	25 000	75 000	40	120 240	100	1	3	475	500
35LR1	35 000	105 000	55	120 240	150	1	3	580	600
45LR1	45 000	135 000	70	120 240	175	1	3	670	730
55LR1	55 000	165 000	86	120 240	225	1	3	730	750
85LR1	85 000	255 000	130	120 240	350	1	3	795	860

USED UNITS ALSO IN STOCK

Distributor for
DE, MD, NJ & PA

MARTIN MACHINERY

SALES - SERVICE - RENTALS

P.O. Box 35, Martindale, Pa. 17549

215-445-4585

BUY, SELL, TRADE OR RENT THROUGH THE
CLASSIFIED ADS

PHONE: 717-626-1164 or 717-394-3047
Mon., Tues., Wed. 8 AM to 5 PM -
Thurs. & Fri. 7 AM to 5 PM

1 FARM EQUIPMENT

Farmall AV w/Cole side dresser; Ford 800 tractor. Both A1 condition. 609-461-1253 after 6 p.m.

Farmers & Dealers -- Your advertising pays for itself when you advertise your equipment in the farm equipment section. 717-394-3047 or 717-626-1164.

FOR SALE-AS 600 Super B grain dryer - 3 phase; Ideal Metal bin, approx. 250 bushel capacity. 717-286-6411 or 717-286-0215.

For Sale: 2 John Deere tires, 16.9x34 mounted on rims and loaded with calcium. 413-665-3338. Whately, Mass.

For Sale: 3 pt. snow blower, 8', \$975. 7' Vee Snow plow, \$250. 215-536-0151 or 717-992-4446

For Sale: 8N Ford, \$1,800.; Farmall Cub with plow, cultivator, mover, \$2,000. Very good condition. 215-777-0052 or 775-0508

702 NI Uni System, lot 102, 710 combine, 728 4 row picking head, 713 13' grain head, 760 chopper. 609-758-2777

Bolens Tractor w/17 horse G174 Iseki diesel, 4 WD w/PTO, 3 pt. hitch w/Brant loader & backhoe & Iseki 48" rototiller, \$6,495.; Black Hawk 4 ton floor jack, \$185.; 3 pt. hitch PTO driven Broadcast spreader, \$325. Working order. 215-582-2197

Bulldozer 440 JD w/backhoe, forward and reverse, clutch broken, clean machine. Must Sell. 717-436-9594

Cat 977-K loader, Fieco ROPS with sweeps, G.P. bucket with teeth, good undercarriage, new head on engine, loader linkage sloppy, runs and operates good. \$18,900. Ron Cooper, Shippensburg, Pa. 717-532-6540

Combines & corn & grain headers at wholesale prices. Call Larry Stalter, "The Combine Man." 219-862-2151.

1964 JD 4020; narrow front, power shift, good condition. \$5,800. 717-354-5092

1980 NH 1069 self propelled bale wagon, 5 spd. trans., 460 V8, air cond., AM-FM, CB radio. \$29,900. Bucks County. 215-968-0561

(1) set of tracks for JD 350, new pins and bushings; 2 gas stoves, (1) 10 burner, (1) 6 burner. 215-445-4410

4610 Ford Tractor, synchromesh trans., ROPS, canopy, used only 10 hrs. Reason for sale, moving. \$13,500. Tioga Co. 717-724-7665

4840 tractor w/dual wheels, triple remotes, 20 front weights, 1,450 hrs., \$29,900.; 1974 Int., model CO4070 w/28' aluminum dump trailer, major engine overhaul less than 2,000 miles; 1981 model 7720, 4WD combine w/643 low profile corn head, 216 flex platform; 1976 model 7700 combine, hydrostatic drive, rotary screen w/643 corn head & 215 rigid platform; 215-869-2649 after 5 p.m.