

THE OLD FARMER'S ALMANAC

JAN. 20-26, 1986

Take care not to slip, as the temperatures dip.

Start seeds now for geraniums, begonias, and vincas. Georgetown University, first Catholic college in United States, founded Jan 23, 1789. Full moon Jan 25 (Sat). Average length of days for the week, 9 hours, 41 minutes. Michigan became 26th state, Jan 26, 1837. Gangland boss Al Capone died Jan 25, 1947. Col Henry Knox arrived in Cambridge, Mass., with British artillery captured at Fort Ticonderoga, Jan 24 1776. *Catch the bear before you sell its skin*



Ask the Old Farmer: I recently found a recipe for sweet and sour pork that called for "six pieces of red haw," which I had to omit since I have no idea what it is. Do you know what "red haw" is? R.Y. Sarasota, Fla. *The hawberry is the fruit of the hawthorn tree*

Home Hints: Instead of halving winter squash before baking it, put the whole squash in the oven, bake until tender when pierced with a knife, then cut in half, remove seeds and membranes, and use flesh according to your recipe.

OLD FARMER'S WEATHER FORECAST

New England: Snowstorm at beginning of week, cold temperatures midweek, end of week severe cold.
Greater New York-New Jersey: Week begins with rain, then snow, midweek turning colder, end of week cold wave.
Middle Atlantic Coastal: Beginning of week warm, midweek rain, end of week cloudy with cold temperatures.
 (All Rights Reserved, Yankee Publishing Incorporated, Dublin NH 03444)

Morrison Cove Livestock

Martinsburg, Pa.
 January 13, 1986

Report supplied by auction

CATTLE 208: Choice 58.00-60.25, Choice 54.50-57.25, High Good & Low Ch. 51.25-54.00, Good 46.00-49.75, Good & Choice holsteins 45.00-47.50, Standard 42.00-44.25, Utility 40.25-41.75. Choice sl. heifers 53.50-56.50, Good 49.25-52.00, Standard 45.25-48.00, Utility 41.25-44.50. Breaking Ut. & Commercial sl. cows 36.50-38.75, Cutter & Boning Ut. 33.50-35.25, Canner & Low Cutter 30.50-32.75, Shells down

to 24.00. Choice sl. bullocks 46.00-49.25, Good 43.75-45.50, Standard 41.00-43.25, Utility 38.75-40.50.

FEEDER CATTLE: Good 51.00-56.00, Standard 41.00-48.00, Heifers Good 48.00-52.00, Standard 37.00-45.50, Bulls Good 48.00-51.00, Standard 42.00-47.00.

CALVES 309: Choice 79.00-86.00, Good 71.00-76.00, Standard 58.00-68.00, Standard & Good 90 lb. to 130 lb. 42.00-47.00, Utility 60-80 lbs. 38.00-41.50.

FARM CALVES: Holstein bulls 90-130 lbs. 80.00-101.00, Holstein heifers 90-130 lbs. 46.00-59.00.

HOGS 142: US No. 1-2 220-240 lbs. barrows and gilts 47.25-48.25, No. 1-

3 210-250 lbs. 46.00-47.00, No. 2-3 200-260 lbs. 44.75-45.50, US No. 1-3 350-600 lbs. sows 37.25-39.50, No. 2-3 350-600 lbs. 35.75-37.00. Boars 27.50-29.50, Light weights 26.75-28.00, Light weights 29.25-30.50.

FEEDER PIGS 78: US No. 1-3 25-35 lbs. feeder pigs 12.00-16.00 per head, No. 1-3 40-50 lbs. 19.00-26.00, No. 1-3 60-70 lbs. 28.00-38.00.

SHEEP 10: High Ch. & Pr. 95 lbs. 58.00, Utility 60 lbs. 46.00. Slaughter ewes 18.00-25.00. 3 GOATS \$26.00-\$32.00 per head.

Carlisle Livestock

Carlisle, Pa.

Tuesday, Jan. 14

Report supplied by auction

CATTLE: Steers 1.00 higher. Choice 58.50-61.00, Good 53.00-57.00; Good & Choice holsteins 46.00-50.00, Medium 52.00 down. Heifers: Steady to 1.00 higher. Choice 56.00-57.25; Good 46.50-53.00; Medium (Mostly Holsteins 42.00 down). Cows: 1.00 to 2.00 higher; Early bird pens firm 2.00 higher. High Yield 38.50-40.10; Good 36.00-38.25; Medium 33.00-35.75; Shelly 32.00-down. FAT Bulls: Mostly steady; Medium-Good 44.00-47.00.

FEEDER CATTLE: Medium 47.00-50.00. Steers (600-850 lb.) Good 48.00-50.00; Medium 47.00-down. Bulls (all weights) Good 45.00-51.50; Medium 34.50-41.00.

VEAL CALVES: Choice 90.00-110.50; Good 70.00-89.00; Medium 55.00-69.00; Light/weak 40.00-54.00; Farm Bulls 85.00-114.00. Hogs: Barrows & gilts 433 hd. (US No. 1-3) 210-250 lbs. 45.00-46.85; over 300 lb. 43.50-46.00; 2&3's 39.00-41.00. **SOWS:** Over 450 lb. 37.25-39.00; under 450 35.50-38.25; Boars: Heavy 25.00-28.25.

FEEDER PIGS: (by the head) (20-25 lbs. 24.00-25.00 hd.) (35-50 lbs. 29.00-38.00 hd.).

LAMBS: Choice 72.00-77.00; Good 60.00-65.00; Med. 54.00-60.00. **EWES:** 27.00-35.00 lb. Goats: (Lg) 44.00-56.00; (hd) Sm./Med. 24.00-38.00.

St. Louis Feeder Cattle

Thursday, January 16
 Report supplied by USDA

FARMERS MARKETS CONSESSIONS AVAILABLE

Openings available for butchers and fresh poultry consessions.

New Farmers Market located in historic downtown Easton, situated on main thoroughfare of town.

For details call
215-252-8707

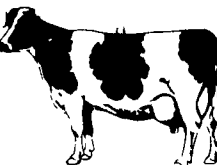
TOP PRICES FOR DOWN, CRIPPLED AND AS IS COWS, BULLS & STEERS

Slaughtered Under Federal Inspection
 Paid On Dressed Weight

Tom Mulvaney
 Livestock Trucking
 (201) 454-4247

HANDLING: Warren, Hunterdon, Sussex And Somerset Counties, New Jersey

IN PENNA: Northampton, Bucks And Lehigh Counties



D & H Cattle Transport

Local and Long Distance Hauling
 With A 24 Ft. Gooseneck Trailer

Call Don At
717/284-2580
 Lancaster, Pa.

LIVESTOCK HAULING

Dependable Service
 6 Possum Bottom Tractors and Trailers
 Call Anytime

Vintage Sales Stables, Inc.
 L. Robert Frame Manager

Office **717-442-4181**
 Office & Home: **215-458-5060**
 Office & Home: **215-458-8518**

ATTENTION FARMERS

Due to the success of the Blair-Bedford Buying Station and by farmers request, Moyer Packing Co. will now take cattle also on Mondays. Check our ad below for new schedule.

ATTENTION FARMERS

The New Way To Market Your Livestock
HATFIELD MOYER PACKING CO. AND PACKING CO.
 Will Receive Hogs AND Will Receive Cattle

At The
BLAIR-BEDFORD BUYING STATION
 RD 1 Martinsburg, Pa.

MONDAYS - Hogs 8 AM to 11:30 AM
Cattle & Calves 8 AM to 3 PM

THURSDAYS - Cattle & Calves
8 AM to 3 PM

- No commission or yardage fees deducted from check
- Livestock weighed and paid for immediately
- You may call our office sale day for prices

DALE R. HOOVER - Owner
 Business **814-793-3077**
 Residence **814-793-2657**

FRIDAY, FEB. 14 ON THE FARM MONTHLY BRED GILT SALE

Sale to Start Promptly Every 4 Weeks at 1:00 P.M.

Located 18 miles south of Lancaster, Pa., 6 miles south of Quarryville, take Rt. 272 to Little Britain, turn north, follow Little Britain Road to Jackson Road, right. 2nd farm, OR take Rt. 222, out of Quarryville to Cedar Hill Road to Little Britain Road to Jackson Road, left. Watch for sale arrows.

50 to 60 Head
 Now selling our new hybrid gilts representing mostly York & Hampshire & Landrace cross. Bred for easier & less trouble over farrowing and better weight gains.

Vaccinated for Lepto, Erysipias, Rhinitis, E'Coll, Pasteurella

Hand mated with Breeding Dates

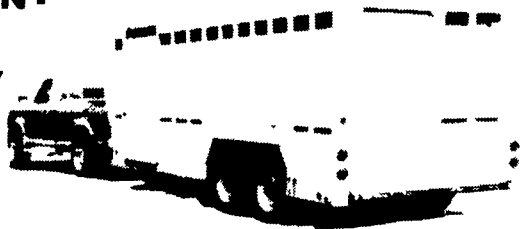
Local Trucker Available
 No Hogs Sold On Commission

CHRIST A. BEILER
 R.D. 2, Quarryville, Pa
JOHN B. STOLTZFUS
 R.D. 1, Kirkwood, Pa

Abe Diffenbach, Auctioneer AU225L

NEXT SALE DATE MAR. 14

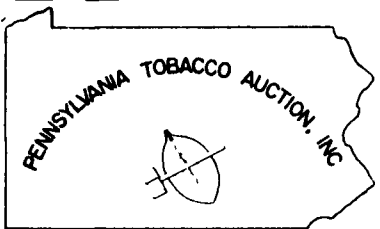
STEP RIGHT ON - NO RAMPS NECESSARY



Call 717/687-7416 For All Your Local & Long Distance Hauling (Stockyards Included)

BARRY C. WENGER
 65 Paradise Lane
 Ronks, Pa. 17572

WE WORK FOR THE FARMER!



WE WORK FOR THE FARMER!

ATTENTION TOBACCO FARMERS OFFERING A FAIRER AND MORE COMPETITIVE WAY TO MARKET YOUR TOBACCO

We thank all farmers for their continued support. It is obvious that we are getting more support each & every day. We hope you realize that the auction has put more dollars back into our own farm community. PLEASE DON'T LET THE SMALL AUCTION FEE DETER YOU FROM USING THIS NEW SYSTEM! The extra price you will get for your outgrade tobacco compared to years earlier will more than pay your auction fee.

Be careful that you do not let rumors of higher prices in the field affect your decisions whether to hold your tobacco for these higher prices. THAT IS ALL THEY ARE, RUMORS! If there are higher prices being offered in the country, they could just as well be offered at auction. The auction will bring the most competitive prices. It is time to get your tobacco sold. Remember, those buyers that support the auction the most will in return be supported by the auction

TYPE 609: Let's hope for some damp weather. It is important that you strip your Type 609 as promptly as you can in order to keep our buyer interest

TYPE 41: We will begin to have TYPE 41 sales regularly beginning Jan 13. We are getting more and more interest from the Southern buyers and this will have a positive influence on your TYPE 41 market. You farmers will have to make the final decision whether to use the auction for marketing your TYPE 41 tobacco. We would appreciate that you stay informed on TYPE 41 auction prices and if you bring TYPE 41 to sell that you have indeed decided to sell! You should do some grading of your TYPE 41 for the auction market. Also, paper is not required, but that is up to you. Call for more details

We have certified Type 609 seeds for sale at the auction

Directions: Sale is held 2 1/4 miles east of Intercourse along Rt. 340 every Monday, Wednesday and Friday

ERIC PROBST GENERAL MANAGER 717-768-7100