

**TRUCKS AND TRAILERS**

1981 Ford F100, 6-cyl., 3-speed, 34,000 miles, radio, new radial all-season tires, white wagon wheels, --717-349-2664. Fr. Co.

1983 F350 XL Ford diesel, 4WD, w/like new Eby aluminum livestock body w/many extras, 29,000 mis. John Strawbridge, 301-941-1122.

6,000 gal. tank trailer w/good rubber, wet line removed from freightliner. Sealed bids by Feb. 6. More info., 215-445-5165.

71 IH Truck 12' Grain Dump New Tires on Rear, Bucks Co.

'73 Chevy Titen, 90 cab over, tractor trailer axle 903, Cummings engine, 13 speed transmission, 10:00x20 tires, Hendrickson suspension, \$6,000 with wet line; \$5,500 without. 717-584-2282 or 584-2274.

'80 Chevy C30 4x4 w/Koenig utility body, 350 4 spd., PS, PB, lock out hubs, AM-FM, 9,200 GVW, excellent condition. \$6,500. 717-733-2873

'70 Chevy rollback, engine, 5+2SP, Maxi brakes, Grove 24' rollback bed, excellent condition. \$11,500. Fisher Spray Painters, 667 Hartman Station Rd., Lancaster, PA 17601 717-393-6530.

81 Chevy heavy duty 3/4 ton pickup, 350 4 spd., PS, PB, 8,600 GVW, regular gas. \$5,450. 717-733-2873

'81 Ford F-350 dually, 4-sp., 400, AM-FM, PS, PB, dual tanks, regular

gas, equipped for bumper/gooseneck trailers. 6x20 heavy duty pipe, gooseneck trailer used very little. 717-436-6393.

'81 GMC 1/2 ton, 4x4 pickup, 6 cyl. heavy duty 4 spd., PS, PB, AM-FM. \$5,900. 717-733-2873

'82 Dodge 150 Club Cab pickup, 318 heavy duty 4 spd., PS, PB, AM-FM. \$5,700. 717-733-2873

'83 Ford Rancher, grey paint with topper, \$3,800. 717-733-4449

'83 Isuzu DLX 4x4 diesel pickup, 4 spd., PS, PB, AM-FM \$4,700 717-733-2873

'84 Chevy Silverado, heavy duty 3/4 ton pickup, 350 auto., PB, PS, PW, DL, cruise, tilt, air, AM-FM, dual tanks, 8,600 GVW, regular gas. \$9,950. 717-733-2873

'84 Ford F150 4x4 Super Cab pickup, 300 6 cyl., heavy duty 4 spd., PS, PB, air, AM-FM, dual tanks, 16,000 miles, excellent condition. \$10,500. 717-733-2873

'84 Ford F350 4x4 Cab pickup, 351 4 spd., lock out hubs, PS, PB, dual tanks, AM-FM, 9,200 GVW. \$10,500. 717-733-2873

**USED TRUCKS**



'83 Ford F150, AT, PS, PB, 6 Cyl., AM Radio, 34,000 Mi., 1 Owner, Ex. Condition. Extended Factory Warranty \$7,250



'82 Ford Super Cab Shortbed Lariat, AT, PS, PB, Air, AM/FM 8 Track, 2-Tone, Rallye Wheels \$6,250



'84 Toyota Long Bed, 5 Speed, 4 Cyl., PS, PB, Bedliner, 11,000 miles \$6,150



'80 Ford 1/2 Ton, AT, PS, PB, AM/FM Cassette, 2-Tone \$4,350

**MARTIN'S AUTO SALES**

725 E. Main St., New Holland, PA 17557 (717) 354-9967

**Moritz and Monarch Trailers Stock and Horse**

**New 1985 2-Slat Bumper**

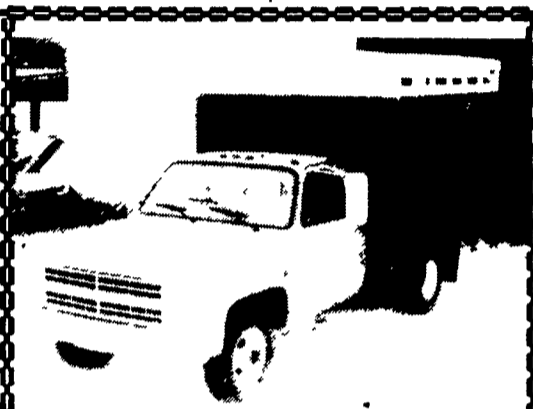
|          | List    | NOW            |
|----------|---------|----------------|
| Red 10'  | \$2,260 | <b>\$2,075</b> |
| Blue 10' | \$2,135 | <b>\$2,000</b> |
| Red 14'  | \$2,660 | <b>\$2,500</b> |

Also 1986 and Used Trailers

**Fishers Trailer Sales**

Lewistown, PA

717-242-0941



1986 C30 Chev., Radio, Heater, PS, Trailer Hitch, 350 Engine, New 115 Mi. 11,000 Gross, With Hostetler Livestock Body. Lycoming Co. 717-398-0477 - \$13,500 Price

**YES!! ENGLE FORD DOES MAKE IT EASIER!!**

Over 100 New & Used Trucks, Vans & 4x4's

- (2) '85 Ford Bronco 4x4, XLT, AC, V8, Automatic 2 Real Sharp Trucks
- '84 Jeep CJ7, 6 cyl., 5 Spd., Hard Top, Only 12,000 Miles
- '83 Subaru BRAT 4x4, 4 Cyl., T-Top, Real Sharp
- '82 Bronco 4x4, V8, AT, PS, PB, XLT Lariat, One Owner
- (2) '78 Ford L-N 8000 Cab & Chassis, Cat 3208 Engine, Diesel, 5 Spd Over 2, A Title, 186" Wheel Base. Hard Find
- '68 International Dump 5 & 2 Speed

**ENGLE FORD, INC.**

Rt. 147 North Millersburg, PA 17061

In PA The Call's On Us 1-800-242-8075 Out of State Call 1-717-692-4841

Mark VII - Pickups - Broncos - Bronco II - Stake Body - Crew Cab -

**SHEEHY FORD LINCOLN MERCURY INC.**

For All Your Farming Transportation Needs Through The F800 Series

BRONCOS DIESEL PICKUPS CHASSIS CAB CARGO VANS 4x4 RANGERS PICKUPS  
BRONCO II SUPER CAB CREW CAB STAKE BODY BOX VANS XLT CUSTOM VANS

**SHEEHY HOTLINE 717-272-7671**

Unless This Emblem Is On Your Car Or Truck You Probably Paid Too Much

**SHEEHY LEBANON**

20th & Cumberland St., Lebanon

**7.9%**

ON F150 4x2 Regular Cab, Super Cab and Rangers (Not Ranger S) 12 - 48 Months

**9.9% APR 49-60 Months**



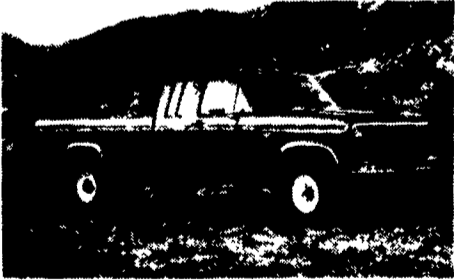
**SNOW PLOWS ARRIVING DAILY**

**7.9%**

On Tempo-Topaz and Cougars [T-Birds w/3.8 Engines Up To 42 Months

**9.9% From 43 to 60 Months**

Congratulations To All The 1986 Farm Show Winners



Custom Vans - XLT - Grand Marquis - Marquis -

Lynx - Topaz - Diesel Pickups - Mustang - T Bird

Tempo - Cougar - Continental - Town Car - 4x4 - Box Van - Rangers -