

Youthful exhibitors win in Junior Breeding Sheep Show

BY SUZANNE KEENE
HARRISBURG — Youthful sheep exhibitors from across the state got their moment in the small arena Wednesday at Farm Show as they paraded their top animals around the ring for show judge Richard Cobb of Urbana Ill.

When the dust had settled and all the champions had been named, some exhibitors went home carrying blue ribbons and wearing smiles, while others left with only the determination to do better next year.

Cheviot

In the Cheviot division of the junior breeding show, Donna MacCauley of Chester County swept all the top honors, taking both the grand and reserve championships with her two ewe

lambs.

Her only competitor, Andy Mellott of Fulton County, took home the first and second place yearling ewes.

Donna, the 15-year-old daughter of William and Joan MacCauley, has six Cheviots and two Suffolks at home. Both her Farm Show champion ewe, Diana, and her reserve champion are homebred. Donna said Diana won at the county fairs this summer and will continue her show career as a yearling.

Corriedale

Kimberly Hopple of Cumberland County topped her sole competitor, Ann Kline, in the Corriedale division, to claim the champion and reserve champion honors. The 16-year-old daughter of Terry and Peggy Hopple, Kimberly has three Corriedales at home.

She purchased her Farm Show champ, a ewe lamb, at the Midwest Stud Ram and Ewe Sale. Since then, the lamb has topped the sheep shows at the Shippensburg and Carlisle Fairs.

Dorset

In the Dorset division, Alicia Strausbaugh and her ewe lamb topped Lancaster County's Margaret Herr to claim the championship. Margaret took the reserve championship with her yearling ewe, Nix Besser 352.

The 13-year-old daughter of Greg and Chris Strausbaugh, York County, Alicia owns about 25 Dorsets. Her champion ewe was purchased at the Ohio State Fair last year and was named champion at the Sussex County Fair and placed first in her class at the York Fair.

Winning at Farm Show is not new to Alicia, who said she had won champion ewe in the junior show two years ago.

Hampshire

Ellen Lewis of Lancaster County took home the champion Hampshire, a yearling ewe purchased from Bedinger Hampshires in Illinois. Reserve champion went to a ewe lamb entered by Michelle Mylin of Lancaster County.

The 16-year-old daughter of George and Loraine Lewis, Ellen said her champion placed second at the Lancaster County Roundup this summer. And, she added, the lamb that was named Supreme Champion at the Roundup was Michelle's ewe lamb.

"I thought it would be the other way around," Ellen said, referring to the switched placings at Farm Show.

Ellen said her champion, who she named Diana after Princess Diana, will soon retire from the show circuit to have lambs.

Merino

With only one competitor to challenge her, Barbara Falvey of Bedford County won both championships in the Merino division of Wednesday's show. The championship rosette went to her yearling ewe, who earlier in the show season had been named grand champion at Bedford, Huntingdon, Fulton and Clearfield County fairs. Barbara purchased her winner from Clousers in Ohio.

She said she was surprised at the way the placings went because the reserve champion, a ewe lamb, had placed 10th in its class at Louisville, while the champion had not done as well.

The 16-year-old daughter of Mr. and Mrs. James Falvey, Barbara owns 30 Merinos and two Suffolks.

Rambouillet

The Rambouillet champions belonged to Leslie Lazarus. Topping entries by his nephew, Ben, Leslie showed his homebred yearling ewe to the championship.

Earlier in the show season, the ewe had claimed the top honor at both the Allentown and Kutztown Fairs.

The 20-year-old son of Calvin and



Barbara Falvey, right, claimed both championships in the Merino division. Here, Melanie Bow, at left, shows Barbara's reserve champion.



Donna MacCauley, right, poses with her Cheviot champion, while sister Nancy, holds Donna's reserve champion.



Two lambs owned by Leslie Lazarus claimed the top spots in the Rambouillet show. Here Leslie, right, shows the champion, while his nephew, Ben, has the reserve.



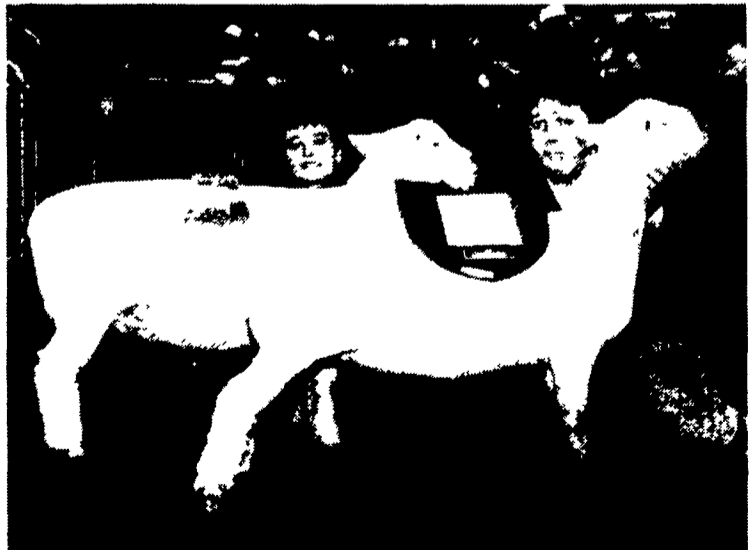
Kim Hopple claimed both champions in the Corriedale division. Here her sisters pose with Kim's winners. Chris, at right, displays the champion, while Sandy, left, has the reserve.



Arlisa Snavelly, left, showed her ewe lamb to the championship in the Shropshire division. Reserve honors went to Diane Musser, right.



Alicia Strausbaugh, left, showed the champion Dorset, while the reserve went to Margaret Herr, right.



In Southdown competition, the champion went to Aaron Humes, right, and the reserve to Melissa Trostle, left.



Two Lancaster County showmen claimed the top honors in the Hampshire show. Ellen Lewis, right, had the champion, and Michelle Mylin, left, took reserve.

Lorene Lazarus, Leslie has been showing sheep since he was eight years old. The family has 40 ewes on their Busy Acre Farm in Lehigh County.

Shropshire Both championships in the Shropshire division went to Arlisa Snavelly of Lancaster County.

(Turn to Page B19)