

Public Auction Register

Closing Date Monday 5 00 P M
of each week's publication

FRI. APR. 11 - 1:30PM PA State Graded Feeder Pigs. Carlisle Livestock Market, Exit 12 off I-81. 717-249-4511.

SAT. APR. 12 - Modern Farm Mach. Located RD2, Mifflintown, PA. Richard Hackenberger, Owner. Brian D. Imes, Auct.

SAT. APR. 12 - 9AM C.H. Wolgemuth & Sons Annual All Day Consignment Sale. Four mis. W. of Manheim, along Valley Rd., 10 minutes from Rt. 283 at Manheim/Mt. Joy Exit. Lanc. Co., PA.

SAT. APR. 12 - A. Hess Brubaker Dispersal of Reg. Holsteins and Farm Eq. Located NW of Shippensburg, PA, between Lurgan and Newburg. Ralph W. Horst, Auct. V. Art Kling, Pedigrees.

SAT. APR. 19 - Arnold's 41st Hog Sale. Breeding Hogs & Project Pigs. Located Lebanon Fairgrounds, Lebanon, PA. Harry Bachman, Auct.

SAT. APR. 19 - 9AM Extremely Large Annual Consignment Auction of Trucks, Trailers, Carpentry & Masonry Eq., Tools, Mach. for Tier Consultants, Inc. Located Garden Spot Auction, Ephrata, PA. J. Omar Landic Auction Service, Jay M. Witman, Auct.

TUES. APR. 22 - Special Spring Feeder Cattle Sale Carlisle Livestock Market, Exit 12 Off I-81, Carlisle, PA. 717-249-4511.

WED. APR. 23 - All Kinds of Tractors & Farm Eq. Keener Eq., Inc., 1531 Manheim Pk., Lancaster, PA. C.H. Wolgemuth & B. Rentzel, Aucts.

FRI. APR. 25 - 9AM Farm Eq. New Holland Sales Stables, Inc., New Holland, PA.

MAY

SAT. MAY 3 - Feeder Cattle & Truck Load of Fresh Produce. Located R.D.1 Liverpool. Owner, Aaron S. Brubacker.

Dairy and Livestock Sales

Bryan D. Imes, Auct

TUES. MAY 6 - Special Spring Feeder Cattle Consignment Sale. Carlisle Livestock Market, Exit 12 Off I-81, Carlisle.

PA. 717-249-4511.

FRI. MAY 9 - 1:30PM PA State Graded Feeder Pigs. Carlisle Livestock Market Exit 12 off I-81. 717-249-4511.

MON. MAY 26 - Antique Tractors & Farm Eq. Keener Eq., Inc., 1531 Manheim Pk., Lancaster, PA. C.H. Wolgemuth & B. Rentzel, Aucts.

DEALER IN ALL KINDS OF LIVESTOCK

Also Crippled & Down Cattle

MARLIN S. IRWIN

Quarryville, PA
PH: 717-786-3016



PUBLIC AUCTION

45 HOL. DAIRY CATTLE, DAIRY EQUIP., HOGS, ON FARM AT CALVERT, PA. 8 miles NE of Trout Run (Lyc. Co.)
SATURDAY, JAN. 25, 1986
starting 12 noon

45 Holstein Dairy Cattle 45 (8 linebacks) herd consists of 26 milking age including 6 1st calf heifers 5 due sale time 6 fresh in last month 5 due Feb & Mar bal all stages several cows milking in the 70 lb range w/potential to milk more 17 heifers from 2 mths to breeding age including 3 linebacks 2 Bulls 1 breeding age The majority of this 100% home raised herd traces back to Kingpin blood Preg Checked Health Charts HOGS Yearling yorkshire landrace boar & sow coming w/3rd litter 6 40 lb shoats Milkeeper 180 gal bulk tank 4 Surge milker units wash vats elec water heater 18 drinking bowls Stewart 610 & 51 clippers dehorners etc Terms Cash or good check sale day

Conducted by Fraley Auction Co.

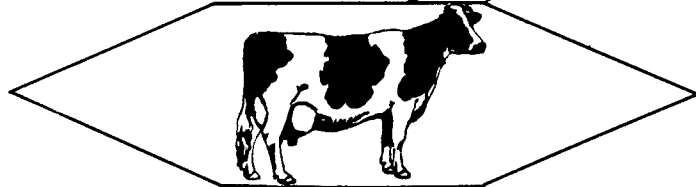
Muncy, Pa.
(717)546-6907
AU001194L

Owners — ELWOOD SR. & MARY JANE LOUDENSLAGER

DAIRY COW SALE

FRIDAY, JANUARY 24, 1986 - 12:00 NOON

Selling at Kling's Sale Barn, located 15 miles N. of Carlisle, Pa., on Rt. 74, 2 1/2 miles N E. of Landisburg, Perry Co., Pa.



60 HOLSTEINS 60

Load of Canadian fresh & close registered & grade Cows & 1st-calf Heifers Several Top Individuals.

Load of Cortland Co. New York Cows - Mostly registered - all fresh. Several Good fresh 1st-calf Heifers from local farmers.

Other Consignments.

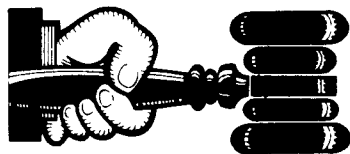
All Cattle vaccinated for Shipping Fever & I.B.R.

Health Charts on All Animals.

Catalogs Day of Sale

V. ART KLING

R.D. 1, Landisburg, Pa.
717-789-3883 Lic
#500



AUCTIONEER'S DIRECTORY

NOTICE

To assure that your Public Sale appears in the Public Sale Section we must have your advertisement by 4 P.M. Tuesday of each week's publication.

WOLGEMUTH AUCTIONEERS

R D #2 Manheim Pa

COMPLETE AUCTION SERVICE

CH

PH 717 665 5664

BOB

PH 717 665 6684

DENNIS

PH 717 627-0571



THINKING OF HAVING AN AUCTION? "EXPERIENCE COUNTS"

Bernie Rell, Auctioneer, and his professional staff has sold thousands of items and has represented farmers from all over and he can solve your auction problems NOW!

CALL NOW TO SCHEDULE YOUR SPRING AUCTION!

AUCTIONEER & REAL ESTATE BROKER

BERNARD D. RELI

R.D.#3, Box 370, Williamsport, PA 17701

Phone (717)745-7200/(717)398-7316

by **Rell** Auction

WHITFORD SALES COMPANY

L ROBERT FRAME & SONS, AUCTIONEERS

L ROBERT FRAME SR
Vintage Sales Stables Inc
Paradise, PA 17562

L ROBERT FRAME JR ESQ
P O Box 100
Uwchland PA 19480

37 Years Of Complete And Experienced Auction Service We Will Buy Your Farm, Machinery And Cattle OR Sell Them For You At Public Auction For Their Highest Market Value!

FOR INFORMATION CALL

BOB (717) 442 4181

(215) 458-8518

ROB (215) 458 5060

Licensed and Bonded

"Eastern Pennsylvania's Foremost Auction Company."

Kreider & Kline Auctioneers

COMPLETE PROFESSIONAL AUCTION SERVICE
REAL ESTATE — FARMS & RESIDENTIAL
PERSONAL PROPERTY — ANTIQUES —
FARM STOCK SALES — LIQUIDATIONS

RANDAL V. KLINE
AUCTIONEER REALTOR
717 733 1006
717 569 8701

LLOYD H. KREIDER
AUCTIONEER
717 786 3394

ROY E. GOOD, JR.

RD 1 BOX 151 A
DENVER PA 17517
215 445 4309

PROFESSIONAL Auctioneering

PAULE MARTIN JOHN D STAUFFER
R D 1, Box 553 217 Andrea Dr
Stevens, Pa 17578 Lititz, Pa 17543

Complete Auction Service We assist you and advise you from the planning stages of your auction to the completion of your auction

For A Consultation In Your Home Call
Paul (717) 733 3511 — John (717) 665 5099
Licensed and Bonded

General Auctioneers - Specializing in
Liquidation of Personal Property,
Equipment, Antiques, Real Estate



Alfred G. Reist
1050 Eden Road
Lancaster,
PA 17601

Licensed • Bonded
Lancaster 717-569-2079
Evenings/Lititz
717-627-8008

334th SPECIAL GUERNSEY SALE

45 REGISTERED GUERNSEYS

THURSDAY, JAN. 23rd, 1986

--12:30 P.M.

At The Guernsey Sales Pavilion, 6 miles East of Lancaster, PA on Route 30

Pavilion Barn Phone: 717-392-9560

Pavilion Office Phone: 717-394-2721

Jeff Staner-Pavilion Manager

The January Guernsey Sale again features a top group of young cows and bred heifers either fresh or close to calving. In addition there are open heifers that will make excellent investments and several show prospects.

CONSIGNMENTS ARE AS FOLLOWS:

CARROLL SHORTALL CORDOVA MD 4 Head
All outstanding bred heifers 1 due Jan 2 Feb 1 March

TERRENCE MURREN HANOVER PA 11 Head
5 Cows All will be just fresh 1 with over 14 000 lbs milk 1 over 13 000 milk 6 Bred Heifers well grown 2 due Feb 1 March 2 April 1 May

DR CLINTON PEASE LEESBURG VA 2 Cows
Both by Western Glow Wistars Premier One due Jan 16 1986

JOHN & GINGER MYERS LITTLESTOWN PA Bred Heifer due Feb

MICHAEL LOWE SHARPTOWN MD
An outstanding 2 yr old by Premier Dam Excellent with 16069 707 3yr 2 mo

SCOTT BLOYER ROHRERSVILLE MD
1st calf heifer by Premier dam a Nance Prince with 15760 731

SUSAN HOLLENBACH BERNVILLE PA
Service age bull by Land of Living Jenny Hom
Dau Cl 87 with 15287 692 4yr 2 mo

RODNEY FRITZ DENVER PA 3 Head
A fresh Choice dau and a granddaughter of Choice due in Mar with 12094 604 4 4 Open Heifer 1 Fr 1 blazer

JOHN B MERRYMAN 20 Head
SPARKS MD

These cattle were purchased for export and due to shipping arrangements being postponed these cattle are being sold to enable the owners of the cattle to receive payment

Among the tops of this group

Greystone's Cyclone's Florette

A Brooknook Cyclone dau dam by Darimost with 17119 794 305 Florette is a top cow fresh with second calf milking over 70 lbs

Chedco Hornets Yvette

A lovely uddered fresh 2 yr old by Top Hornet dam a VG Darimost lifetime over 118 000M 6135 fat

W S Rose's Winston Rosy

A top 3 yr old Winston daughter bred by Steve & Warren Shorts This cow could be one of the best due in February

W S Choice Andrea

A 4 yr old by Choice dam by Winston due Feb 2 This is another top cow

Twelve head in this group were selected by Don Alexander at the New York State Sale Included are the 8 open heifers mostly from the Shorts herd

Attend this sale for well bred high producing Guernseys that will add fat and protein to your tank and increase your milk check

More emphasis is coming on component pricing and high protein will be profitable both from your milk check and sale of breeding animals

SALES HEADQUARTERS: MILL STREAM MOTOR LODGE 717-299-0931

Located 1 mile North of Sales Pavilion

Call or Write Sale Managers for catalog and additional information.

SALE MANAGED BY:

PA GUERNSEY BREEDERS' ASSOC.
Lee Yost, P O Box 360,
Benton, Pa 17814
717-925-6447
Ruth Ann John
5417 Manheim Rd
Waynesboro, Pa 17268
717 762-3301

THE MERRYMAN COMPANY
John B Merryman, Auctioneer
P O Box 566
Sparks, Md. 21152
301-771-4625-office
301-771-4624-home
AU-000599-L