

# Champions named in Open Breeding Sheep Show

BY SUZANNE KEENE

**HARRISBURG** — While most Farm Show visitors were congregating in the large arena Sunday for the opening ceremonies and greetings from Gov. Thornburgh, sheep breeders from across the state gathered in the small arena to show their best animals.

As the hours ticked by and spectators came and went, show judge Duran Howard of Southwestern, Okla. scrutinized each entry carefully before selecting the champions in each division.

## Cheviot

In the Cheviot division, Howard selected animals owned by Erdenheim Farm as his champions. The champion ewe was a yearling, while the ram was a spring ram lamb. Both champions have been on the show circuit this season, placing high in their classes in most shows, including the Maryland State Fair.

Reserve champion ewe and ram and the premier exhibitor award also went to Erdenheim Farm.

Erdenheim Farm, an estate owned by F. Eugene Dixon, is located in Lafayette Hill, Montgomery County. The farm's flock of Cheviots usually numbers approximately 200 head, according to shepherd Marlin Stroh. The farm also raises Black Angus cattle and Belgian draft horses.

## Dorset

Lancaster County's Margaret Herr claimed the champion ewe spot in the Dorset division with a homebred yearling ewe making its showing debut. Margaret was pleased with her success at this year's Farm Show, noting, "We won three of our four classes, so we're real happy."

Margaret also showed the reserve champion ram.

The champion ram rosette belonged to a spring ram lamb owned by Windswept Farm of Centre County. The homebred ram is no newcomer to the winner's circle; he was champion at the Keystone International Livestock Expo in November and placed fifth in his class at Louisville.

The Downsboroughs, who own Windswept Farm, also showed the reserve champion ewe and were named premier exhibitor of the Dorset show.

## Hampshire

In the Hampshire division Clyde and Dorothy Brubaker of Lancaster County showed the champion ewe, while their daughter, Sarah, and her husband, Tim Fleener, took home the champion ram. The Brubakers and the Fleeners reside on the same farm and use the same rams, but have different ewes.

The champions, both homebred

animals, have done well on the show circuit so far. The ram was named champion at Keystone and placed seventh in his class at NAILE, while the ewe placed second in her class at KILE and 12th at NAILE.

When asked if he had expected the family's sheep to win, Clyde responded, "We knew we had good sheep and that it would take good sheep to beat us."

Tim and Sarah Fleener also showed the reserve champion ewe and were named premier exhibitor. Steward Ebersole and Son of York County showed the reserve champion ram.

## Shropshire

Twelve-year-old Arlisa Snively of Lancaster County claimed the champion ewe honor in the Shropshire division with her 4-H project, "Snowball," a homebred spring ewe lamb. The championship holds special meaning for Arlisa since it was her first time to compete in an open show.

"I thought she was good, but that was a big class," Arlisa said, referring to the 13 other animals in the Spring Ewe Lamb class.

Charles and Barbara Platt of Belmont Ridge Farm, Gettysburg, showed the champion ram, a homebred spring ram lamb. The Platts have about 28 Shropshires and 25 Merinos on their farm.

Reserve championships went to Tom and Deb McCaffrey of Chester County with their yearling ram, and to Joyce Harpster of Centre County with her yearling ewe. David Harpster was named premier exhibitor.

## Southdown

Steve Kwisnek of Scenic View Farm, Indiana County, dominated the Southdown division of the open breeding show, claiming both champion ram and ewe with two homebred entries. The Kwisnek's have been raising Southdowns for 12 years and have been coming to the Farm Show for years.

Kwisnek also won reserve champion ewe and premier exhibitor.

The reserve championship ram went to David Harpster.

## Suffolk

In the Suffolk division, Rachael Hixenbaugh of Beaver County showed last year's Farm Show champion ewe to still another victory.

The champion ram belonged to Pine Haven Farm of Cumberland County. Pine Haven also showed the reserve champion ewe and premier exhibitor honors.

The reserve champion ram belonged to Circle K Farm of Bedford.

## Corriedale

The Corriedale show this year was owned by Dale L. Crouse of Prosperity in Washington County. During Monday night's show, he captured the champion ram and champion ewe honors, then went on to be named the premier exhibitor.

Dale thought he might have a chance at the champion ram, however, having the champion ewe as well was a total surprise.

"This year I decided to bring the ram to see just how good it was," he said. "It was winning consistently during the summer but never really had much competition."

Now Dale hopes to be able to sell the ram for breeding purposes.

## Rambouillet

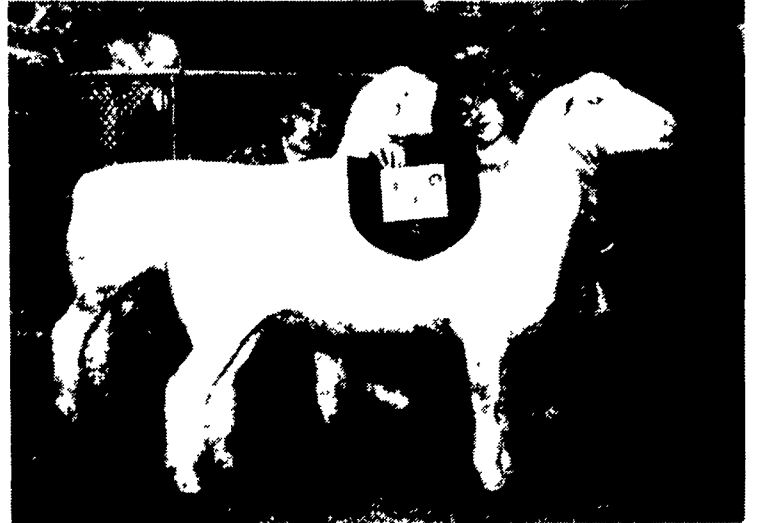
Cumberland County found its way into the spotlight in the Rambouillet competition. Both the champion ram and ewe are from that county.

Dianne Conaway of Pine Haven Farm has been coming to the farm show almost every year since 1968, yet this is her first Rambouillet champion ram.

This summer, her ram "Max" started making a name for himself



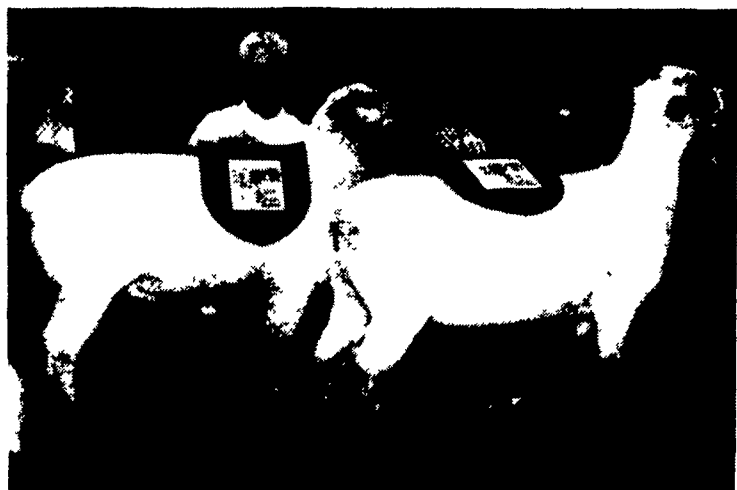
Marlin and Alice Stroh show champion Cheviot ewe and ram owned by Montgomery County's Erdenheim Farm.



Bill MacCauley shows champion Dorset ram owned by Windswept Farm. Margaret Herr had champion Dorset ewe.



Mother and daughter display a pair of champion Hampshires. At left is Dorothy Brubaker with her top ewe and Sarah Fleener with champion ram.



Barbara Platt (left) took top honors with her Shropshire ram, while 12-year-old Arlisa Snively earned Shropshire champion ewe title.



Ron Miller (left) and Gary Kwisnek show Steve Kwisnek's champion Southdown ram and ewe.

by placing in either the champion or reserve position at every show.

The reserve champion is owned by Billy George Leib, age 5. Even at this tender age he can tell you virtually everything you want to know concerning his sheep.

His parent started his flock for him when he was still in the womb. This will enable him to have a competitive flock of his own breeding by 4-H age.

The results of several large shows this summer and this year's farm show make it appear that he is well on his way towards that goal as he was also named premier exhibitor.

## Merino

The Merino breed found some new and old faces in the spotlight. The Platts who showed the champion ewe last year returned with her to again take that honor. This ewe is on quite a winning streak dating back to November, 1984.

The champion ram is owned by Barbara Falvey of Bedford County. Barbara has shown at the Farm Show for the past 4 years. This year, however she was unable to do the showing herself, and ironically this is the year it happened for her.

Judging the three shows was David Greene, livestock specialist with the Maryland Carroll County Extension Agency.

## CHEVIOT DIVISION

- Yearling Ram**
  - 1 Erdenheim Farm 2 Kathy Weaver 3 Andy Mellott
- Spring Ram Lamb**
  - 1 Erdenheim Farm 2 Erdenheim Farm 3 Kevin and Malcolm Koontz
- Pair of Ram Lambs**
  - 1 Kevin and Malcolm Koontz 2 M/M Herbert Rudy 3 Andy Mellott
- Champion Ram**
  - Erdenheim Farm
- Reserve Champion Ram**
  - Erdenheim Farm
- Yearling Ewe**
  - 1, 2 Erdenheim Farm, 3 Andy Mellott
- Spring Ewe Lamb**
  - 1, 3 Erdenheim Farm 2 Kevin & Malcolm Koontz
- Pair of Ewe Lambs**
  - 1 Erdenheim Farm, 2 Kevin & Malcolm Koontz 3 Donna MacCauley
- Champion Ewe**
  - Erdenheim Farm
- Reserve Champion Ewe**
  - Erdenheim Farm
- Breeder's Young Flock**
  - 1 Erdenheim Farm, 2 Kevin & Malcolm Koontz, 3 M/M Herbert Rudy
- Flock**
  - 1 Erdenheim Farm 2 Kevin & Malcolm Koontz 3 Andy Mellott
- Premier Exhibitor**
  - Erdenheim Farm

## DORSET DIVISION

- Fall Ram Lamb**
    - 1 Margaret Herr 2 GA & MM Downsborough 3 Peter Levan
  - Spring Ram Lamb**
    - 1 GA & MM Downsborough 2 3 Peter Levan
  - Pair of Ram Lambs**
    - 1 GA & MM Downsborough 2 Peter Levan 3 Kathy Jo Rider
  - Champion Ram**
    - GA & MM Downsborough
  - Reserve Champion Ram**
    - Margaret Herr
  - Yearling Ewe**
    - 1 Margaret Herr 2 GA & MM Downsborough 3 Peter Levan
  - Fall Ewe Lamb**
    - 1 2 GA & MM Downsborough 3 Margaret Herr
  - Spring Ewe Lamb**
    - 1 Margaret Herr 2 Peter Levan 3 GA & MM Downsborough
  - Pair of Ewe Lambs**
    - 1 GA & MM Downsborough 2 Peter Levan 3 Kenneth Staver Family
  - Champion Ewe**
    - Margaret Herr
  - Reserve Champion Ewe**
    - GA & MM Downsborough
  - Breeder's Young Flock**
    - 1 GA & MM Downsborough 2 Kenneth Staver Family 3 Peter Levan
  - Flock**
    - 1 GA & MM Downsborough 2 Margaret Herr 3 Peter Levan
  - Premier Exhibitor**
    - GA & MM Downsborough
- ## HAMPSHIRE DIVISION
- Yearling Ram**
    - 1 Steward Ebersol & Son 2 Judy Waltersdorff 3 Sandra Troxell
  - Fall Ram Lamb**
    - 1 2 Tim & Sarah Fleener 2 M/M Clyde Brubaker
  - Pair of Ram Lambs**
    - 1 Tim & Sarah Fleener
  - Champion Ram**
    - Tim & Sarah Fleener
  - Reserve Champion Ram**
    - Steward Ebersol & Son
  - Yearling Ewe**
    - 1, 2 Tim & Sarah Fleener, 3 David Lytle
  - Fall Ewe Lamb**
    - 1 Michelle Mylin
  - Spring Ewe Lamb**
    - 1 M/M Clyde Brubaker 2 3 Tim & Sarah Fleener
  - Pair of Ewe Lambs**
    - 1 Tim & Sarah Fleener 2 M/M Clyde Brubaker 3 David Lytle
  - Champion Ewe**
    - M/M Clyde Brubaker
  - Reserve Champion Ewe**
    - Tim & Sarah Fleener
  - Breeder's Young Flock**
    - 1 Tim & Sarah Fleener 2 M/M Clyde Brubaker 3 Ellen Lewis
  - Flock**
    - 1 Tim & Sarah Fleener 2 Steward Ebersol & Son 3 Ellen Lewis
  - Premier Exhibitor**
    - Tim & Sarah Fleener
- ## SHROPSHIRE DIVISION
- Yearling Ram**
    - 1 Tom & Deb McCaffrey
  - Spring Ram Lamb**
    - 1 Charles & Barbara Platt 2 3 David Harpster
  - Pair of Ram Lambs**
    - 1 Charles & Barbara Platt 2 David Harpster
  - Champion Ram**
    - Charles and Barbara Platt
  - Reserve Champion Ram**
    - Tom and Deb McCaffrey
  - Yearling Ewe**
    - 1 Joyce Harpster 2 David Harpster 3 Arlisa Snively
  - Spring Ewe Lamb**
    - 1 Arlisa Snively 2 David Harpster 3 Charles & Barbara Platt

(Turn to Page D18)