

# GAS & DIESEL ENGINE REPAIR

**LOMBARDINI** • Experience • Reasonable Rates  
 DIESELS SALES & SERVICE New & Used Gasoline & Diesel Engines  
**BRIGGS & STRATTON**

## ATTENTION: FARMERS - CONTRACTORS

Now is the time to prepare equipment for spring. Avoid spring rush. We stock parts for Briggs & Stratton, Kohler, Kawasaki, Wisconsin gas engines and Lombardini Diesels. Pickup and delivery service available in Lancaster County. All repairs guaranteed



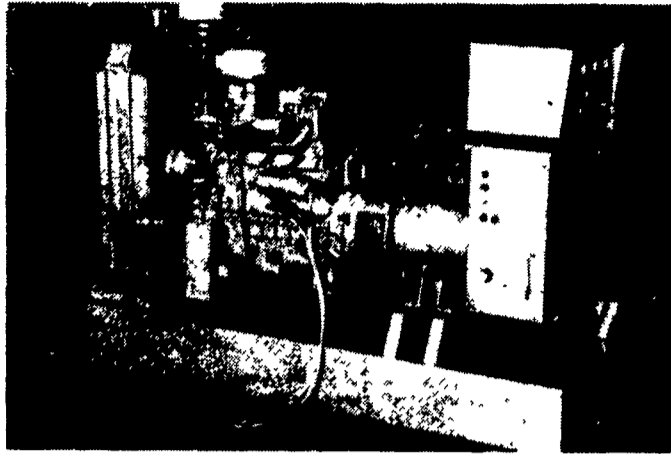
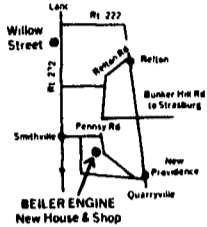
**10% Off On Parts and Labor On Shop Jobs, \$100 Or More Before January 31, 1986**



## BEILER ENGINE SERVICE

245D PENNSY RD., NEW PROVIDENCE, PA  
**717/786-7943**  
 7:30 - 8:00 AM Mon. thru Fri.

Check Our Prices



Isuzu - Powered Generator Set - 5-160 KW



**FUEL EFFICIENT**

**LONG LIFE**

Your Dealer: **Parts - Sales - Service**

# MARTIN ELECTRIC PLANTS

Pleasant Valley Rd. Ephrata, PA 17522  
**(717) 733-7968**

## USED EQUIPMENT

### NEW EQUIPMENT SPECIALS

- New Landall 5 Shank Soil Master
- JD 1610 Pull Type 11' Chisel Plow
- JD 1710A Pull Type 11' Mulch Tiller
- JD 2700 6 Bottom Spring Reset Plow
- JD 2600 5 Bottom Spring Reset Plow
- JD 1010 13' Field Cultivator
- JD 900 V-Ripper 7 Standard
- JD 27 Flail Shredder

### TRACTORS

- JD 4630 w/duals ..... \$17,000
- JD 4430 w/4 Post ..... **Coming In**
- JD 4040 ..... **\$20,500**
- Ford 6000 ..... **\$ 2,900**
- Oliver 1650 Diesel Overhauled ..... **\$ 5,500**
- JD 3010 ..... **\$ 5,500**
- IH 1486 w/Duals ..... **\$16,900**
- Long 450 Dsl. .... **\$4,500**
- IHC w/Equip. .... **\$1,900**
- JD 2940 ..... **\$15,000**
- JD 730 Dsl ..... **\$ 3,500**

### COMBINES

- JD 6620 Sidehill w/643 C.H. & JD 215 Flex Head. .... **Call for Price**
- IH 205 Combine w/3R C.H. .... **\$ 5,500**
- 68 JD 45 ..... **\$ 5,000**
- MF 300 Massey w/heads ..... **\$ 6,500**

### MANURE SPREADERS

- JD 680 ..... **\$3,500**

### PLANTERS

- JD 4 Row Cons. w/Liquid ..... **\$ 7,500**
- JD 4 Row Conv. Liquid ..... **\$ 7,500**
- AC 4 Row 800 ..... **\$ 1,500**
- (2) JD 7000 Cons. 6 Row ..... **\$ 9,000**
- JD Cons. 7000 6R. Liquid
- JD 8300 21x7 w/Tru-Vee Openers. .... **\$ 4,100**

### TILLAGE

- JD 315 Disc ..... **\$ 4,900**
- JD 950 10' Roller Harrow, Like New ..... **\$ 3,500**
- JD 1010 Folding Field Cultivator, 22' ..... **\$ 3,500**

### HARVESTING

- IH 720 Harvester w/2 Heads ..... **\$ 3,500**
- JD 1209 Mower/Conditioner ..... **\$ 1,500**
- NH 469 Mower Conditioner ..... **\$ 1,000**
- Hesston PT10 Mower Conditioner ..... **\$ 1,800**
- NH #36 Crop Chopper ..... **\$ 1,900**

**NI 801 Power Unit, 4WD w/818 Combine & 846N Corn Head, 800 Hrs. Call During Day 717-362-3132**

**TOBIAS EQUIPMENT CO., INC.**  
 Halifax, PA 17032  
 Phone: 717-362-3132



## LOST CREEK IMPLEMENT

Oakland Mills, PA 17076  
 717 463-3511 463-2161



### Green Value - Used Equipment USED COMBINES

- JD 6600 Side Hill, hydro, 1,300 hrs., 15 platform, excellent
- MF 205 combine w/10' platform, cab, model 24 corn head, sharp
- NH TR85, 1,800 hrs., cab, 4WD, Cat dsl, hydro, 16' flex platform
- NI 710 Um Combine w/10' grain platform
- MF 760 combine w/hydro, cab, AC, 1163 corn head, platform, \$29,000
- NH 975 combine w/platform and Q1 Feeder House
- JD MF w/platform, cab, air, nice
- JD 444 corn heads
- JD 643 corn head
- Assorted JD platforms
- NI 311 2 row pull type sheller
- NI 25 2 row narrow sheller, excellent
- JD 300 Husker
- Waiver on New & Used

### USED TRACTORS

- JD F40 SGV power shift, excellent
- JD 2950 Tractor, 500 hrs., like new
- JD 4328 Tractor, 110 hp, good condition
- JD 2840 tractor, new tires, good cond
- JD 2010 Gas, nice
- JD 70 Gas, excellent
- JD 60 Tractor
- JD A Tractor w/picker
- MF 60 tractor, good, new tires, reduced \$7,300
- Farmall H sharp
- Ferguson 30 w/loader
- AC WD w/10m plow

### TILLAGE

- IH transport disc, 12', good
- IH 204 6m plow, excellent
- 60 2, 3, 4, 5 bottom plow
- 9' Case transport disk
- 10' Oliver disk
- 18' transport harrow
- JD 12' disc harrow

### DRILLS & PLANTERS

- JD 1440 no-till planter, dry, insect, very good
- JD 1440 planter, good cond
- JD 1400 4 row conservation planter, dry, insect, marker, monitor, excellent
- MF Grain Drill, steel wheel, nice
- IH 96 4 row DV disc drill

### HAY, FORAGE & MISC

- NH 30 Baler w/thrower, nice
- NH 30 Baler
- NH 68 baler w/thrower
- JD 336 baler w/30 ejector, good
- IH 430 baler w/thrower, good
- JD 480 mower conditioner
- 3' Used Flail Chopper
- JD 506 Rotary cutter
- IH 830 harvester w/7' row head, excellent cond
- JD 38 Harvest
- 8' Bullhorn Cultipacker, like new
- JD 114 Forage Box
- JD 750 grinder mixer, very good
- JD 80 tool bar, 2 row cultivator
- Ford 3 pt hitch mower, \$125
- 2 1/2 12' NH Spreaders, \$800 each
- 2' Used gravity bins w/trimmer, good
- IH 990 haybine, 3'

## USED TRACTORS

- Ford 3400 w/Ind. Loader, PTO, 14.9x28 Tires (W1429)
- IH F1566, Gear, PTO, TA, Cab, AC, 20.8x38.1 Tires (W1423)
- IHF 1206, Duals, Diesel, Gear, 18.4x38, PTO (W1428)
- IHF 1256, w/Duals, Diesel, Gear, Cab, AC, PTO, 18.4x38 Tires (W1431)
- Deere 8630 w/3 Pt. Quick Attach, Quad Range, Cab, AC PTO 20.8x38 Duals All Around (W1333) Tires (W1410)
- MF 175 Diesel, Gear w/Multi-Power, PTO (W1238)
- Versatile 160 w/Loader, Diesel, Hydro, 13.6x24 Tires, PTO, AC (W1364) **\$22,500 \$19,500**
- Steiger Tiger-Turbo w/3 Pt. Quick Attach, AC, Gear, 13.5Lx32 Tires (W1372)
- Deutz DX-160 Diesel, Cab w/Air, 18.4x38 Duals (W9694) **\$26,000 \$18,900 Save \$8,100**
- IH F1066D, 18.4x38 8P, Dual PTO, Gear (W1316) **\$12,500 \$11,700 Save \$800**
- IH Farmall A w/Cultivators, Rear Wheel Weights 9x24 Tires (W1143)
- IH F1206 Diesel, Gear, 20.8x38 Tires, 120 HP, Cheap-Dependable Power (W8934) **\$9,000 \$7,000 Save \$2,000**
- Deere 4840D, Powershift, 20.8x38 Duals, 1000 RPM PTO, Cab w/Air & Radio (W1180) **\$28,000 \$26,500 Save \$1,500**
- IH Farmall H, Clean Tractor (W9625) **\$1,200 \$1,025 Save \$175**
- Ford CL-20 Skid Loader, Gas 8.50x15 Tires, 45" Bucket (W1183)
- IH F1206D, New 18.4x38, Dual PTO, Extra Sharp Tractor (W9890) **\$9,500 \$7,500 Save \$1,000**
- IH F1066D Hydro, 20.8x38 8 Ply Tires, Dual PTO (W1045) **\$12,200 \$10,500 Save \$1,700**
- IH 3388 2+2 Tractor, 16.9x38 8 Ply Tires, Dual PTO, Full 4-Wheel Drive (W1109) **\$24,500 \$22,500 Save \$2,000**
- IH F1566D Gear, Cab w/Air, 20.8x38 Duals, 165 HP, Cheap Power (W9921) **\$14,000 \$13,900 Save \$900**
- IH F1466D Gear, 145 HP, 24.5x32 10P Tires, Aux. Fuel Tank, (W9236) **\$14,800 \$12,900 Save \$1,900**
- IH F828D Hydro, COMPLETELY RECONDITIONED, 18.4x34 Tires, Dual PTO (W9743) **\$19,500 \$9,200 Save \$1,300**
- IH F656 Gas, Gear, 3 Point, TA, PTO, (W9194) **\$6,500 \$4,900 Save \$1,600**
- IH F1086D, ROPS, 20.8x38 8P Tires, Dual PTO, T/A, 145 HP, Excellent Tractor (W8729) **\$17,500 \$15,200 Save \$2,300**
- IH Farmall 200 Gas, 11.2x36 Tires, Fast Hitch, PTO
- IH Farmall Super C w/Cultivator, 2 Row (W8569) **\$1,500 \$1,250 Save \$250**
- MF 35 Gas, 13.6x28 Tires, PTO, Heavy Loader w/Down Pressure. (W1093) **\$6,400 \$4,300 Save \$1,100**
- Steiger ST 300 Cougar III, Cat 3306 @ 300 HP, 30.5Lx32 Tires, Cab w/Air (W1273) **\$27,500**

## OTHER USED EQUIPMENT

- NH 795 Spreader w/Top Beater, Hyd. Endgate, 10.0x20 Tires, (V1396)
- IH 55 Chisel, 3 pt. 9 Shank (T1434)
- Krause 1924 Disc, 10.0x15 Tires, 21', Flex Wing, Tandem, Size Front 19", Rear 20" (T1424)
- Krause 2242 Disc w/Duals, 12', Tandem, Size 17" Front, 18" Rear. (T1422)
- Bush Hog 12' Disk, 9" Spacing, 18" Front & 19" Rear (T9647)
- IH 550 Plow, 5f, 14" Spring Trip, (T9657)
- IH 710 Plow, 3F, 16, Auto Reset, Semi-Mount (T9916)
- IH 540 Plow, FF, 16" Spring Trip (T9725)
- Athens Model 156 Chisel Plow, 3 Point, 7', Depth-Gauge Wheels (T1284)
- IH 55 Chisel Plow, 13' Mounted, 3 Rank, 32" Shanks, Gauge Wheels (T9894)
- IH 510 18x7, Grain Drill w/Fertilizer, DD Openers (V9905)
- Deere 8300 Grain Drill, 16 Double-Disc Openers, 10" Spacing, Press Wheels (U9922)
- IH 540 Manure Spreader, 160 Bushel, Hydraulic Endgate, 8.25x20 Tires (V9769)
- IH 595 Spreader, Hyd. Endgate, Dual Web, Upper Beater. Consignment (V9830)
- IH 7' Cycle-Bar Mower, 2 Pt. Hitch (U1305)
- Deere 110 Disc, 10' 9" Spacing (T8034)
- Bush Hog Disc - 10' 9" Disc Spacing - Front, 7 1/2' Rear, (T9109)
- Brillion STT-01 Spring Harrow - 16' (T9185)



All New & Used Products Backed By Hoover Parts & Service  
 Radio Controlled Trucks For Better Service  
**(717) 768-8231**

