



# Livestock market and auction news

## Shenandoah Valley Livestock

Harrisonburg, Va.  
Saturday, Jan. 4

Report supplied by auction

**FEEDER CATTLE:** No Trends.  
**STEERS:** M&L-1 300-500 lbs. 63.00-65.50, 1 lot of 7 @ 70.00; 500-700 lbs. 55.50-60.50, 700-1000 lbs. 54.00-54.75; Holstein 300-1000 40.00-45.50. S-L&M&L-2 300-500 lbs. 58.50-64.00; 500-700 lbs. 52.00-60.00, 700-1000 lbs. 52.50-53.00.  
**FEEDER BULLS:** M&L-1 300-500 lbs. 46.00-53.50; S-L&M&L-2 300-500 lbs. 46.00-50.00.  
**HEIFERS:** M&L-1 300-500 lbs. 54.50-61.50; 500-700 lbs. 44.00-51.00. S-L&M&L-2 300-500 lbs. 46.00-50.00; 500-700 lbs. 42.00-45.50; 700-800 lbs. 41.00-42.50.  
**STOCK COWS:** Baby Calves

30.00-96.00 mostly 50.00-70.00.  
**SLAUGHTER CATTLE:** Steers- Good few 56.85.  
**SLAUGHTER COWS:** 50-2.00 Lower. Utility & Commercial 2-4 30.50-37.75; Canner & Cutters 1-3 27.00-31.00.  
**SLAUGHTER BULLS 1 & 2:** 34.50-44.50.  
**LAMBS:** Too few to establish trend. Blue O. High Choice & Prime 66.30; Red O. Choice 70.00; Feeder Lambs Choice 71.00; Slaughter Ewes 19.00-28.25; Head Ewes 50.00; w/lambs 85.00.  
**HOGS:** US 1-3 200-240 lbs. Too Few To Quote.  
**SLAUGHTER CALVES:** Good & Choice 50.50-58.00.

## Virginia Auction Summary

Jan. 2-8, 1985

Report supplied by VDA South & Southwest Va.  
Trend: Steady to 2.00 higher. Receipts 5,892.

**STEERS:** Medium 1 300-500 lbs. 58.00-69.50; 500-700 lbs. 52.00-65.50; 700-1000 lbs. 48.00-59.00. Large 1 300-500 lbs. 48.00-69.50; 500-700 lbs. 55.00-65.50; 700-1000 lbs. 48.00-58.00. Small 1 300-500 lbs. 50.50-64.00; 500-700 lbs. 52.00-64.50; 700-1000 lbs. 45.00-52.00.

**HEIFERS:** Medium 1 300-500 lbs. 44.50-55.00; 500-700 lbs. 43.50-53.50; 700-900 lbs. 43.00-46.50. Large 1 300-500 lbs. 46.50-55.25; 500-700 lbs. 44.00-54.75; 700-900 lbs. 44.25. Small 1 300-500 lbs. 42.75-52.50; 500-700 lbs. 40.00-48.00.

Northern, Va.  
Jan. 2-8, 1985

**STEERS:** Medium 1 300-500 lbs. 55.00-66.50; 500-700 lbs. 54.00-66.50;

700-1000 lbs. 48.50-59.75. Large 1 300-500 lbs. 63.75-65.00; 700-1000 lbs. 50.00-56.60. Small 1 300-500 lbs. 51.50-64.00; 500-700 lbs. 48.00-57.75; 700-1000 lbs. 52.50-53.00.

**HEIFERS:** Medium 1 300-500 lbs. 44.50-53.25; 500-700 lbs. 44.00-50.50; 700-900 lbs. 43.50-48.00. Large 1 300-500 lbs. 45.00-53.50; 500-700 lbs. 43.00-51.00. Small 1 300-500 lbs. 40.00-41.75; 500-700 lbs. 38.50-45.50; 700-900 lbs. 40.75.

## Four States Livestock

Hagerstown, Md.

Wednesday, January 1

Report supplied by Auction

**SLAUGHTER:** Fed Steers- \$1.00 Higher. Choice 58.00-60.00; Good 52.00-57.00; Medium 51.00-Down. Cows- Steady To \$1.00 Higher. Few To \$42.25; High Yield 38.00-40.00; Average 34.00-37.00; Big Middle 30.00-33.00; Fatty Herf. 29.00-33.00; Shelly 25.00-31.00. Fat Bulls- \$2.00 Higher. Good 45.00-51.25; Medium 39.00-44.00. Veal Calves- Steady Prices No Choice Offered- Farm Calves \$2.00 Higher; Good 65.00-70.00; Medium 55.00-64.00; Farm Hfrs. 45.00-50.00; Farm Bulls 85.00-100.00; Light Calves 40.00-46.00;

Weak Calves 39.00-Down. Lambs- Few Offered Good 60.00-62.50; Bulls- Med. to Good 43.00-48.00.

**STOCKER STEERS-** 300-550 lbs. Mostly Steady- Choice 57.00-60.00; Good 52.00-56.00; Medium 45.00-51.00; Culls 44.00-Down. Steers- 600-850 lbs. Choice 53.00-56.00; Good 46.00-52.00; Medium 45.00-Down. Heifers- (All Weights) Good 41.00-45.50; Medium 37.00-40.00. Springing Heifers To \$685.00; Pigs- Hd. Good Run \$2.00 Higher- 20-35 lbs. 20.00-34.00; 40-70 lbs. 35.00-49.00; Shoats By Lb. 42.00-53.00; Slaughter Hogs 220-240 lbs. 47.00-47.50; 270-300 lb. 44.00-46.00; 200-210 lb. 44.00-45.00. Sows- 500-750 lb. 37.00-39.75; 350-450 lb. 34.00-36.00.

There Were 563 Hogs Sold Here Tuesday Morning At The Buying Station. Top Price Was \$48.00 & One Lot \$48.50. Thanks For Your Support. We Are Open to Receive Livestock Every Wednesday 8:00 A.M. And All Livestock Weighed When Received, Not When It Is Sold. That's Why It Pays To Sell At Four States, "The Farmers Market". Sale Starts 6:00 P.M. With Veal Calves First.

## Vintage Hay And Straw

Vintage Sales Stables  
Thursday, Jan. 9

Report supplied by auction  
Alfalfa, 40.00-80.00; Timothy 51.00-67.00; Wheat Straw, 58.00-76.00; Corn Fodder, 40.00.

## Keister's Hay & Straw

Keister's Middleburg Auction  
Tuesday, Jan. 7

Report supplied by auction  
84 loads.  
Alfalfa 72.50-77.50; Mixed hay 35.00-70.00; Timothy 56.00-57.50; Straw 55.00-60.00; Ear corn 47.50-65.00; Firewood 17.00-50.00.

## LEESPORT MARKET & AUCTION, INC.

North end of Leesport, PA

Turn East off Route 61

"WHERE FRIENDS MEET"



BERKS COUNTY'S ONLY WEEKLY  
CATTLE & SWINE AUCTION —  
WEDNESDAY AT 1 P.M.



FARMER'S MARKET Every Wednesday,  
10 A.M. TO 9 P.M.

Garden Fresh Fruits & Vegetables - Bakery Fresh Cakes, Pies and Buns - Butcher Fresh Meats & Cheese - Sporting Goods - Clothing - Furniture - Jewelry - Used Items & Collectibles.

PHONE: 215-926-1307

LEROY WEIST & JOHN WEIST, MGRS.

## D & H Cattle

### Transport

We Specialize In Long  
Distance Hauling And Use  
A 24 Ft. Goose Neck Trailer  
Call Don At

717/284-2580

Lancaster, PA

## Green Dragon Livestock Sales

Location: Ephrata RD 4. 1 mile N. on North State St., Ephrata.



COWS COWS COWS  
SALE EVERY FRIDAY

Lots of good Northern Feeder & Stockers. Slaughter Cows - Bull Steer, Veal-lamb

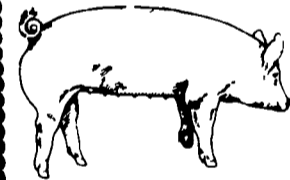
11:00 A.M.-Beef Sale 200-300 each week.  
1:00 P.M.-Dairy Sale.  
7:00 P.M.-Small Animal Sale.

For Special Sales and Herd Dispersals on farm or at our barn or other market information call: Office 717-733-2444, Home 717-838-4318.

WALTER H. RISSER, Proprietor

All out of state and new buyers must have cash or certified check or current letter of credit from bank.

## EMERY'S BUYING STATION



OPEN TO RECEIVE  
YOUR MARKET HOGS

AT THE GREEN DRAGON MARKET  
RD 4, EPHRATA, PA 17522  
1 MILE NORTH OF EPHRATA  
ON NORTH STATE STREET.

HOURS: MONDAY, TUESDAY, and  
WEDNESDAY 6:00 A.M. to 11:30 A.M.  
215-458-5677 Residence  
717-733-9648 Office

YOU ARE PAID FOR YOUR  
HOGS IMMEDIATELY

Ken & Lois Emery, Proprietors



Be Wise...  
Check our  
prices before  
you buy!!

We will deliver in  
the Delmarva area.

# SPRAY MATERIALS

- \* ATRAZINE
- \* DUAL
- \* LASSO
- \* SUTAZINE
- \* ROUND UP
- \* LASSO- ATRAZINE
- \* BLADIX
- \* BANVEL
- \* LOROX
- \* PARAQUAT
- \* PRINCEP
- \* EXTRAZINE
- \* LORSBAN
- \* FURADAN
- \* COUNTER
- \* DYFONATE

SAVE ON BULK  
HERBICIDES

• BICEP • LASSO-ATRAZINE • PROWL

MELVIN R. WEAVER

2213 Leabrook Road, Lancaster, PA 17601

Ph: 717-569-6576 or 898-8354

## SWINE PRODUCTION SALES AND SERVICE

Complete Feeding  
Programs and Services

Feeding Programs to  
Meet Your Individual  
Needs

Computerized  
Record Keeping  
System

Providing Veterinarian  
Service

PA. Toll Free  
1-800-468-5524



419 W. High Street  
Elizabethtown, PA  
17022

Supplying Farm Fresh  
Feeder Pigs

Marketing and Hedging  
Services

Marketing of Genesis  
Breeding Stock

Developing Individual  
Financial Programs

Direct Dial  
(717) 367-1525