

23 HELP WANTED

Good Working Conditions

Manage your own department. Must have parts department experience. Qualified applicants call for appointment.

LANCASTER FORD TRACTOR
717-369-7063

SALES REPRESENTATIVE

Well established national company is seeking an individual to call on local farmers in north central Maryland. A candidate should have either a BS in Agriculture or some experience in sales. The company offers good pay and benefit package, plus company vehicle. Send resume or call to setup an interview.

CPS
P.O. Box 145
Keymar, MD 21757
301-775-7171

SALES AND SERVICE PERSON WANTED

Position available for energetic person to expand sales for feed business. Agricultural background is necessary with any knowledge of veal calves a plus. Will service PA and MD. Starting salary plus commission on new sales and travel expenses.

Reply Lancaster Farming
P.O. Box 366, R-68
Lititz, PA 17543

SALES REPS NEEDED

in several areas including PA, MD, VA, and Carolina to service dealer accounts and direct sales to users.

If you desire above average income and have a proven sales background, would you be willing to make a total commitment to this sales position?

For more information see

U.S. Agri Systems
at PA Farm Show Booth N-25 in the dairy barn or call

800-222-2948
after Jan. 20.

AGRI-CAREER OPPORTUNITY

Salesperson needed for fast growing Dairy Equipment Dealership in Pennsylvania's dairy heartland. Commission potential to exceed \$30,000 per year. Send resume to:

Lancaster Farming
PO Box 366 - L-89
Lititz, Pa. 17543

All replies treated with strict confidentiality.

ARE YOU SEEKING

EMPLOYMENT or are YOU AN EMPLOYER

SEEKING TO FILL POSITIONS CONTACT The Agricultural Employment Specialists
NORTHEAST Agri-Employment Services

P.O. Box 233
Roaring Spring, Pa. 16673
Tel. No. 814-224-4542

Sell Animal Health Supplies

farm to farm. Must have dairy farm experience and be aggressive. Guaranteed salary plus commission and excellent benefits. Call:

Animal Medic, Inc.
717-266-3611

24 SITUATIONS WANTED

EXPERIENCED HERDSMAN: Seeks position w/40 to 60 head Holstein herd. Experienced in all phases of herd care as well as herd health and AI. Will consider some field work. Prefer Central Pa area. 717-359-5036

24 SITUATIONS WANTED

Opportunity to purchase, salvage log houses/farm house flooring. Will travel from Adams County. 9-5, 717-334-5740.

Responsible young man, 27 with farm background desires agricultural related truck driving job. References available. Will Relocate. 215-593-5854.

WANTED TO RENT: Dairy barn w/house for herd of cows in Lancaster or Lebanon County. 717-738-1359

Young person looking for farming job. Experience in milking and feeding. Reply to Lancaster Farming, PO Box 366, L-88, Lititz, PA 17543.

25 BUSINESS OPPORTUNITIES

For Sale: Feed Store Business, excellent opportunity. Downingtown area. 215-269-0991

If you are interested in servicing the agricultural community & starting or expanding your current ag. business, stop at the PA Farm Show, Booth #40-N (in the dairy barn) or call 215-255-4641

27 PETS

23' Birch built-in kitchen cabinets. All appliances included. Available beginning of February. Must see to appreciate. Dauphin. 717-944-9155.

COAL & WOOD STOVES (Used)
EFEL Kaminar 420; Garrison I; Pennfield I; Coalbrookdale Hydronic STOVES (New)
EFEL Kamina T-50% Off; Most Shenandoahs-25% off
Canterbury's-20% off Wood Heat
Rt. 212, Pleasant Valley, Quakertown, PA. 215-346-7894.

For Sale: (1) Prizer Kitchen Range, very nice condition. Ammon Fisher, R.D.1, Bachmantown Rd., Ronks, Pa. 17572.

Rebuilt Electrolux, Kirby, Hoover, Eureka compact vacs, \$64 and up. Also guaranteed rebuilt Maytag, G.E., Whirlpool, Frigidaire, Sears washers, dryers, ranges, refrigerators. Guaranteed used parts at 1/2 price. Handyman, 101 S. Railroad Ave., New Holland, PA. 717-354-0328.

27 PETS

Registered Blue Heelers (Australian cattle dog), excellent family and herd dogs. \$50. 717-359-4862

Rotweiler puppies and one year old male registered. Cumb., Carlisle. 717-243-8328.

WANTED-Puppies, all breeds. Jack's Dog Farm, Rt. 611, Pipersville, PA 18947. 215-766-8802.

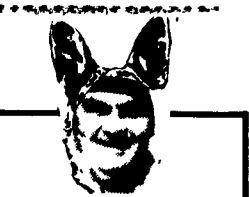
Catahoula stock dogs and puppies for sale. Farm raised, excellent dogs. Call for information, 215-493-4900.

Chihuahua pups, AKC, shots, wormed, 2 males, house broken. 215-358-1669 evenings.

For Sale: One pair Red/White Husky's. Also, Bas-set Hound breeders. 717-776-7942.

Komondor pups, AKC, 5 months old, raised w/sheep to guard against predators. Reasonable. 703-822-5802

Pure German Shepherd Pups For Sale. Michelob's Finest. Call Dean 717-627-0652



PUPS WANTED by Jo Jo The Dog Man \$ Top Dollar Paid \$

I Need 330 Pups Mon., March 3

I will pick up pups in Kirkwood at 12 Noon; Quarryville, 12:30 PM; Georgetown, 1 PM; Strasburg, 1:30 PM; Intercourse, 2 PM; Terre Hill, 2:30 PM; New Holland, 3 PM; Ephrata, 3:30 PM; Blue Ball, 4 PM; Honeybrook, 4:30 PM; Morgantown, 5 PM.

Meeting Points Will Be By Most Post Offices. I will also be at Roots, Manheim, PA - Tues., March 4th, 5-8 PM

I need 220 pups that day. There will be a \$100 prize for the cutest pup purchased.

Call Jo Jo after March 1st if you have any questions on my Toll Free Number

1-800-524-1348 before 9 AM
1-609-452-8903 after 9 PM

P.S. The winner of \$50 for the cutest pup purchased on Dec. 23 was Jake Allguyer, Nelw Providence.

31 NOTICE

PUBLIC NOTICE - NOTICE TO BUYERS

The Farmers Home Administration has for sale the following property:

One (1) 1981 International Harvester Tractor, 4 wheel drive, Model 3588 2 plus 2, Serial Number U014166. Said tractor has 2002 hours on it.

Sales will be made by sealed bids. Sealed bids will be made on Form FmHA 1955-46 available at the local County Office or by calling (609) 769-1127. Each bidder will execute a form and attach to it a deposit of not less than 5 percent of the bid in the form of cash, cashier's check, postal money order, bank draft, or purchaser's check made payable to FmHA. Third party checks are not acceptable.

Prospective bidders may inspect the tractor at South Jersey Farmers Exchange, located on Route 40, at the railroad tracks in Woodstown, NJ. Hours are Monday-Friday from 7:30 a.m. to 12:00 noon and 1:00 p.m. to 4:30 p.m. and Saturday from 8:00 a.m. to 10:00 a.m.

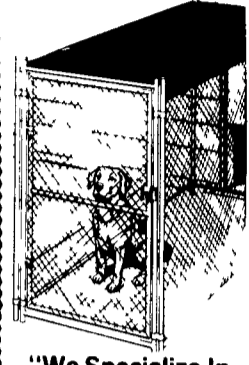
The sale will be for cash or financing may be offered on both eligible and ineligible terms. Contact the County Office regarding eligible program terms and requirements. Ineligible terms are not less than 10% down with the balance at 11.8750% not to exceed 5 years. Preference will be given to a cash offer that is at least 96 percent of the highest offer requiring credit.

Opening of the bids will be public and will be held at the Salem County Office of FmHA located at 1000 East Route 40, Woodstown, New Jersey on Tuesday, January 21, 1986 at 1:00 p.m.

The Government reserves the right to reject any or all bids. Said property will be sold without regard to race, color, religion, sex, age, national origin, or marital status.

Sealed bids are to be submitted to Kevin P. Murphy, County Supervisor, in an envelope marked "Bid - Tractor Property" no later than Tuesday, January 21, 1986 at 10:30 a.m. Mail bids to Post Office Box 227, Woodstown, NJ 08098.

CUSTOM BUILT CHAIN LINK KENNELS



"We Specialize In Kennels" Singles To Large Complexes Apply To: Quality Fencing & Supply
R.D. #1 - Box 428
New Holland, Pa. 17557
717/354-9760

SHEARER'S BORDER COLLIES

Puppies, started dogs, trained dogs Also, Exhibition work and professional announcing
717-285-5338
388 Hershey Mill Rd., Mountville, Pa. 17554

Registered Australian Shepherds, reds & merles, have both parents, excellent dogs.
717-258-6389.

AKC male Black Lab puppies. \$75.
717-393-1490

WANTED Puppies For Pets

AKC, Purebred, Mixed Litters.
Stud service for most breeds
Transportation provided
Forest Ridge Kennel
296 S. Vintage Road
Paradise, PA 17562
717-442-4259

32 MISCELLANEOUS

Index milling machine, Bridgeport, \$2,000; 18" Lodge and Shipley lathe, \$4,000. 201-453-2088.

JD 350-C loader, 1,850 hrs., new pins, bushings, sprockets, 3/4 yard bucket, ROPS, \$20,000; 540 Carretree, 40" transplanter, \$4,000, w/quick-tatch; 9 Dow general trailer, 9 ton, \$4,000 215-582-4143.

Meat Grinders, Band Saws, Slicers & Tenderizers. New splitting saws, only \$249. Gerry Grundy, Doyleburg, Pa. on Rt. 75, 200 yards north of Rt. 274. Open Sat. & Sun. 10 a.m. to 4 p.m., 717-349-7654. Evenings call 215-549-7584.

MUST SELL: Lost storage space & retired: HYD-ROTEX OIL: (1) 55 gal. barrel 750 Deluxe automatic trans. fluid; (1) 55 gal. Essentialube fuel conditioner; (1) 55 gal. Ford ATF ESW, M2C33-L7052PB; (1) 35 gal. Lubrakleen oil Supplement. \$400. each. Sch. Co. 717-345-8367

10 1/2' Pinnacle Deli Case; 12' Produce Case; 8' Frozen Food Case; Remodeling make reasonable offer, all operating. Cedar Valley Grocery, York County. 717-382-4337

185 moving quilts, 72x80, \$6 a piece. 215-646-9057.

1976 Regal Regency 21'6" fiberglass boat, 302 Ford inboard outboard w/Mercury drive, tandem axle e-z loader trailer. \$8,500. Equipped for fishing and skiing. 215-869-2649 after 5 p.m.

4 1/2' x 10' wire mesh sheets, 1"x2" mesh, 14 gauge \$3.00 a sheet. Delivery available. 717-354-5341

Bandsaw Blades made to order. Wood, metal or meat cutting. UPS shipping. 717-733-0511. Martin's Sharpening, R.#1, Ephrata, PA 17522.

Bought and sold new and used cardboard boxes, drums, Pink, Quart & Gallon Containers. Reliable Recyclers, 178 Greenfield Road, Lanc., PA, 17601, 717-397-7695

Buying old U.S. Coins, Indian Pennies, Large Pennies, Silver Dollars, etc. Call 717-665-6421

CASH for your piano or sell on consignment. Call Ken at 717-392-3233.

Electric or air hay saw, cuts wood, meat and hay, multi-purpose, \$286 plus COD. Dealers wanted. 412-423-4076.

Electric Yale crane truck K42 SH-6-7-78 maximum capacity, 6,000 lbs. \$600. 2 1 5 - 5 4 2 - 7 9 8 0 215-646-9057.

FOR SALE 90 Folding metal chairs 201-369-3666.

FOR SALE: New and used automatic washers, dryers, gas and electric refrigerators, ranges, used wringer-engine washers. Open 7:30 to 4:30; Saturday, 7:30 to 12:00; evenings by appointment Myers's Washer-Dryer, Rt. 772, between Brownstown and Leola. 717-656-7169.

For Sale: Commercial quality butcher handsaws. \$22.00. Also, blades in stock. UPS shipping. 717-733-0511. Martin's Sharpening, R.#1, Ephrata, PA 17522.

Index milling machine, Bridgeport, \$2,000; 18" Lodge and Shipley lathe, \$4,000. 201-453-2088.

THE DRY TOILET

Self-Contained Composting Toilet Needs No Water Or Chemicals

Replaces conventional septic systems with a self-contained bioconversion appliance • Eliminates wastewater discharge • Constructed from rugged stainless steel and non-porous plastic • Features positive venting for odorless operation • Easily maintained • The compact HUMUS 80 occupies only 25"x33" of floor space



Pump Services, Inc.

157 Knoxlyn Rd., Gettysburg, PA 17325
(717) 334-0224 or (800) 242-3909

WATER TESTING

Protect your investment for \$29.00

Contaminated water can harm livestock & you! After mailing this coupon with your payment you will receive a sampling kit along with instructions for sampling. You sample the water & UPS will pick up the kit at your front door the next day

NAME _____
ADDRESS _____
PHONE _____
QUANTITY _____ PRICE _____

_____ Farmers Package @ 29 00
(Total coliform, nitrate, sulfate)
_____ Comprehensive Package @ 69.00
(Total coliform, ph, chloride, nitrate, sulfate manganese copper)
_____ Total Coliform @ 20.00
Total _____

Mail coupon with check or money order to
Hydro-Analysis Associates, Inc.
RD1, Noble St. Extension, Kutztown, PA 19530