

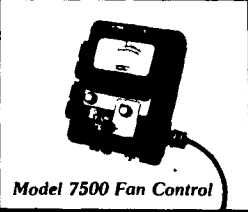
# Agri-Equipment, Inc. Offers Complete Systems, Equipment, Sales, Installation, Service For Cattle, Hogs And Poultry

## FEATURING:

- CHORE-TIME COW FEEDING SYSTEMS
- GALVANIZED HOG CONFINEMENT EQUIPMENT
- CHORE-TIME POULTRY & LIVESTOCK SYSTEMS
- HOSKINS HEATED CATTLE & HOG WATERERS
- SHENANDOAH POULTRY & LIVESTOCK EQUIPMENT
- SBM INFRARED BROODERS

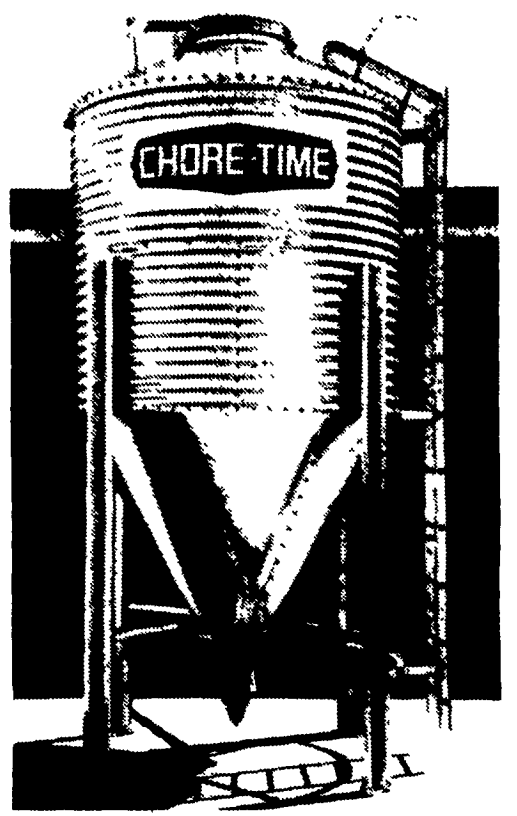
**Advanced ventilation systems**

**CHORE-TIME**



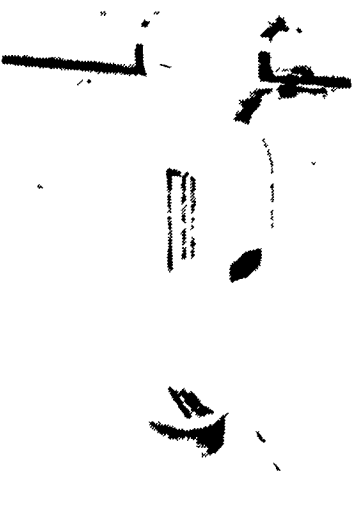
**CHORE-TIME**

**COMPLETELY GALVANIZED, WEATHER-PROOF BINS**  
2.9 Ton to 52 Ton Capacity



*We Will Assemble & Deliver Bins To Your Farm!*

### CHORE-TIME CHORE-TIME DROP FEEDING SYSTEM



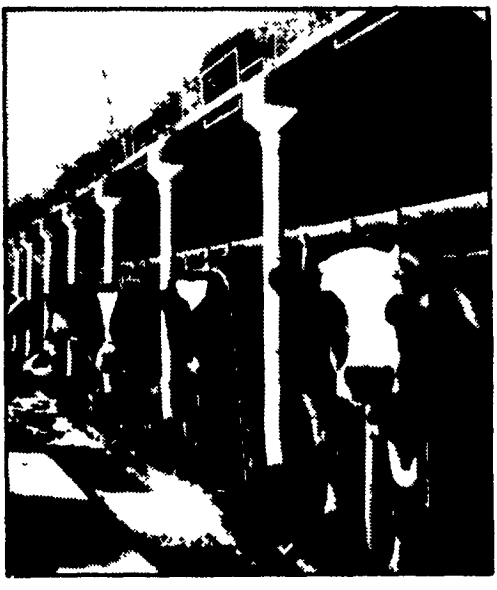
Chore-Time's Drop Feeder is designed for feeding individual cows or sows - and used in groups can feed an entire pen of hogs.

Drop Feeders are made of durable, rustproof polyethylene plastic for feeding either dry ground rations or for use in H.M. corn systems.

They fit on our MULTIFLEX tube as well as on various FLEX-AUGER tube sizes.

They can be either manually or automatically tripped to feed all animals at once. The system then refills the feeders and shuts off automatically.

Simple, trouble-free ball valve and easily adjusted feed quantity gauge in pounds and kilograms.



**CHORE-TIME**

### HAS THE ONLY FLEX-AUGER FOR HIGH MOISTURE CORN

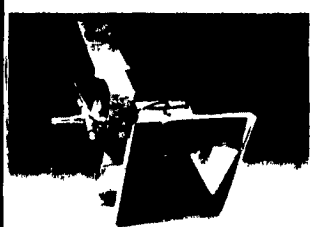
**FLEX-AUGER**



### GENUINE FLEX-AUGER SWINE, DAIRY & POULTRY FEED DELIVERY SYSTEM

- 5 Models To Choose From
- 10-Year Warranty On Coreless Auger

**SBM**  
INFRARED HEATING, INC.



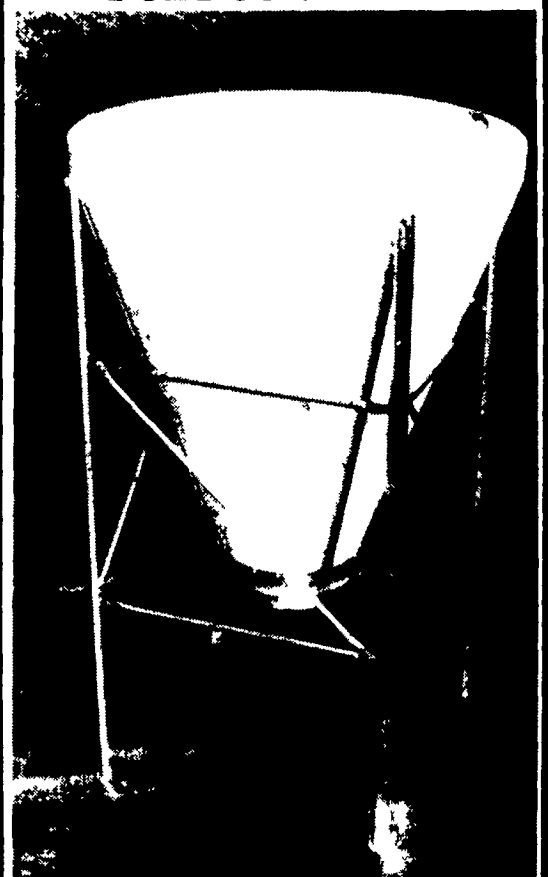
**HOG, POULTRY AND TURKEY BROODERS**

5 Models To Choose From...  
2,200 BTU to 14,000 BTU

*Save Energy With These Efficient Radiant Heat Brooders*

**CHORE-TIME**

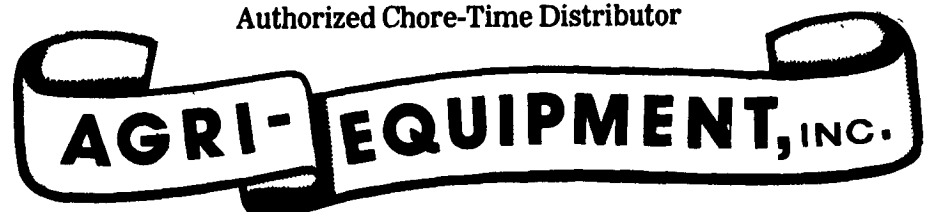
### NEW CHORE-TIME 1000 LB. POLY CONE TANK



*Available With Or Without Lid*

COMPLETE SYSTEMS, EQUIPMENT, SALES, INSTALLATION, SERVICE FOR CATTLE, HOGS AND POULTRY

Authorized Chore-Time Distributor



RD 4, East Farmersville Rd., Ephrata, PA 17522  
(Lancaster County)  
717-354-6520

**STORE HOURS:**  
Mon.-Fri. 7:30 to 4:30  
Sat. 7:30 to 11:30  
(Parts Only)