

Mark VII - Pickups - Broncos - Bronco II - Stake Body - Crew Cab -

# SHEEHY FORD LINCOLN MERCURY INC.

## For All Your Farming Transportation Needs Through The F800 Series

BRONCOS  
BRONCO II  
PICKUPS

DIESEL PICKUPS  
SUPER CAB  
CHASSIS CAB  
CREW CAB

4x4  
BOX VANS  
RANGERS  
XLT

CARGO VANS  
STAKE BODY  
CUSTOM VANS



### SHEEHY HOTLINE 717-272-7671

Unless This Emblem Is On Your Car Or Truck You Probably Paid Too Much

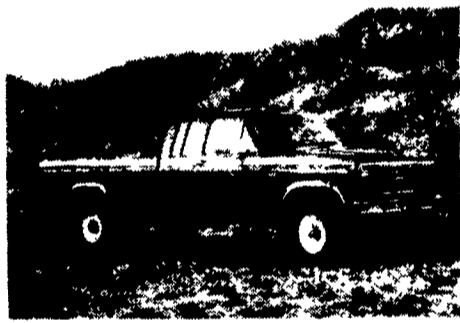
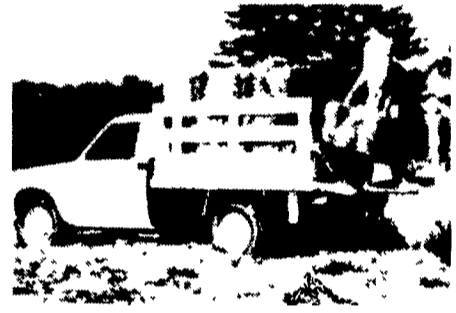
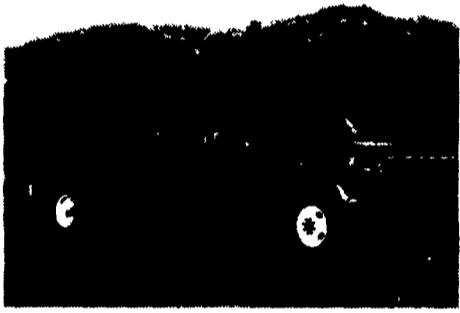
9-9 Daily  
9-5 Sat.

# SHEEHY LEBANON

Parts Dept. Open  
Daily 8-5  
Sat. 8-12

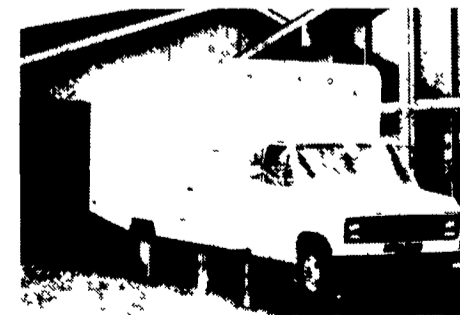
20th & Cumberland St., Lebanon

**7.9%**  
ON F150 4x2  
Regular Cab, Super  
Cab and Rangers  
(Not Ranger S)  
12 - 48 Months  
**9.9% APR**  
49-60 Months



### SNOW PLOWS ARRIVING DAILY

**7.9%**  
On Tempo-Topaz  
and Cougars &  
T-Birds  
w/3.8 Engines  
Up To 42 Months  
**9.9%**  
From 43 to 60  
Months



*Congratulations To All The 1986 Farm Show Winners*

Tempo - Cougar - Continental - Town Car - 4x4 - Box Van - Rangers

Custom Vans - XLT - Grand Marquis - Marquis - Mustang - Diesel Pickups - Topaz - Lynx

Super Cab - Chassis Cab - Escort - LTD - Super Cab - Crew Cab - Crown Vic - T Bird