

INDUSTRIES, INC.

Swing Away

Working Harder...So You Won't Have To!

"Working Harder...
So You Won't
Have To!"

- HYDRAULIC LIFT CYLINDER
No more hand cranking
- SCISSOR CARRIAGE
Allows maximum reach
- DIRECT DRIVE
Less wear points

- One Person Can Position From Tractor Seat
- Designed To Save Time!

"Quality Conveying Equipment For Over 30 Years"

MAYRATH BALE MOVERS

8 FT. MID JOINT W/CHAIN

40% STRONGER

16 ft. Hay Loft Conveyor
Hinges up and down

- 16 ft. Bale Mover
- Light, easy to handle — 7 pounds per foot.
 - Each section is 24 inches wide (full 22 inches inside width) by 12 inches deep, and trussed like a bridge.
 - Chain may be run in either direction.
 - 2 ft. or 8 ft. mid joints available to make any length desired.

Shown Less
Belt Guard

HANDLES LIKE A LADDER

ALL PURPOSE AUGERS

3½-Inch Junior Auger

6-Inch All Purpose Auger

Available With All Attachments

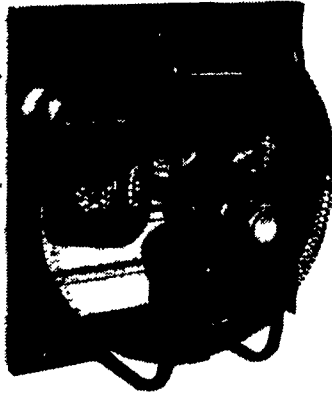
MAYRATH

Ask About Our **NEW**
\$\$ LOWER PRICES \$\$
On All Mayrath
Augering Equipment

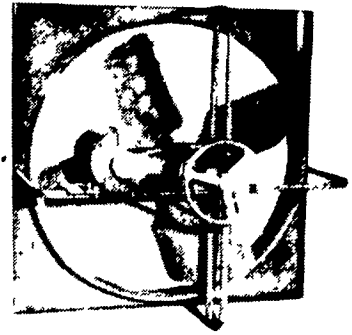
LEISS MANUFACTURING

Wall and Ceiling Mount

VENTILATION EQUIPMENT For The Farm



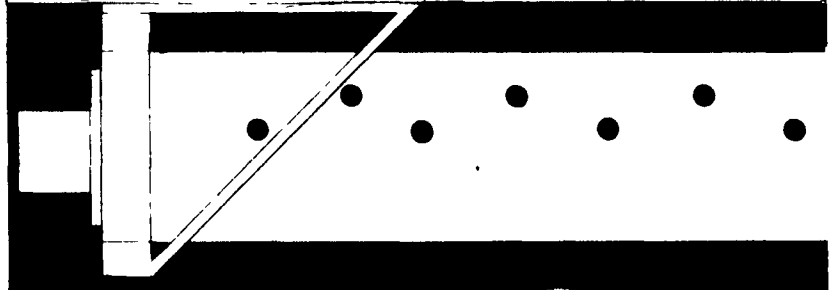
12 to 24 inch
Direct Drive



24 to 36 inch
Belt Drive Fans

- Completely automatic, fully assembled ready to operate.
- Heavy gauge corrosion resistant aluminum fan blade.
- Extra sturdy, corrosion resistant pointed steel frame.

Poly Tube Ventilation



Ventilation For Dairy - Hogs & Chickens

WATER THAT WON'T QUIT



RELAX...
Ritchie.
WATERS 'EM RIGHT™

Ritchie Fountains deliver. Even in the dead of winter they are out there working. You're not.

Weatherproof. You bet they are. Heating systems and efficient insulation keep water ice-free... just set the Watt Watcher™ thermostat for minimal energy use. Big-throated, non-stick plastic valves keep water gushing in. Each of your cows get all the water they need to promote peak production.

Ritchie Fountains are tough, too. Quality-built with rugged heavy galvanized steel and CD-50 epoxy finish to stand up to weather and barnlot abuse.



Why take chances on anything less than a red and yellow Ritchie Fountain? Call your Ritchie dealer for water that won't quit.

See Us At The
PA FARM SHOW
Jan. 12-17
Space #358-359, 343-345

RYDER SUPPLY
— CO. —

P O Box 219
Chambersburg, PA 17201-0219
Phone 717-263-9111