



\* All Clothing Free From Armstrong - Not Mummaw Tire

## FREE ARMSTRONG JACKET

With Purchase Of 2 Rear Farm Tires During Farm Show Week!

## FREE ARMSTRONG CAP

With Purchase Of 2 Front Tires or 2 Wagon Tires During Farm Show Week!

## SPECIAL OFFER

ON ARMSTRONG RADIAL FARM TIRES



### Loader-Dozer

Free Jacket When You Buy A Pair!



★ **TUBELESS** ★

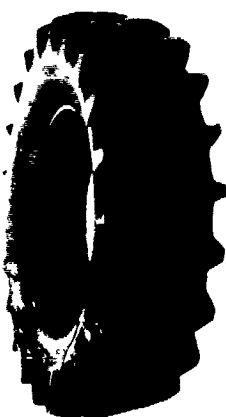
16 9x24 8 ply -	\$265.00
16 9x24 10 ply	\$330.00
17 5Lx24 6 ply	\$240.00
17 5x24 8 ply	\$270.00
15 5x25 12 ply -	\$320.00
17 5x25 12 ply -	\$445.00
19.5Lx24 10 Ply	\$359.00
18.5Lx24 12 Ply	\$359.00
21Lx24 12 Ply	\$465.00

★ **TUBE TYPE** ★

14 9x24 6 ply -	\$200.00
14 9x24 8 ply -	\$220.00
16 9x24 6 ply -	\$220.00
16 9x24 8 ply -	\$235.00
16 9x24 10 ply -	\$280.00
17 5Lx24 8 ply -	\$240.00
16 9x28 8 ply -	\$260.00
18 4x28 10 ply -	\$340.00
20 5x25 12 ply -	Call For Quote
23 5x25 16 ply -	Quote
1300x24 10 ply -	\$225.00
1300x24 12 ply -	\$245.00
1400x24 10 ply -	\$255.00
1400x24 12 ply -	\$280.00

**10% DISCOUNT FOR CASH PICK UP AT OUR STORE OR... FREE MOUNTING!**

### Hi Power Lug



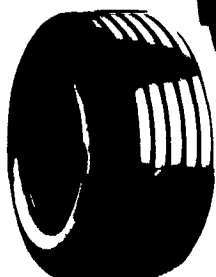
**FREE JACKET w/PAIR PURCHASE**

Mounting Only \$20.00 Per Tire If Purchased During January And Mounted By Feb. 15

11 2x24 4 ply	100.00
14 9x24 4 ply	150.00
14 9x24 6 ply	165.00
14 9x24 8 ply	190.00
16 9x24 6 ply	190.00
16 9x24 8 ply	210.00
14 9x26 6 ply	172.00
18 4x26 6 ply	235.00
23 1x26 8 ply	525.00
23 1x26 10 ply	600.00
11 2x28 4 ply	115.00
12 4x28 4 ply	130.00
13 6x28 4 ply	145.00
13 6x28 6 ply	160.00
14 9x28 4 ply	160.00
14 9x28 6 ply	175.00
16 9x28 6 ply	220.00
16 9x28 8 ply	240.00
18 4x28 6 ply	275.00
16 9x30 6 ply	230.00
18 4x30 6 ply	270.00
23 1x30 8 ply	650.00
24 5x32 10 ply	750.00
16 9x34 6 ply	255.00
18 4x34 6 ply	299.00
18 4x34 8 ply	325.00
20 8x34 6 ply	459.00
20 8x34 8 ply	510.00
23 1x34 8 ply	689.00
11 2x38 4 ply	140.00
12 4x38 4 ply	168.00
13 6x38 4 ply	179.00
13 6x38 6 ply	198.00
14 9x38 6 ply	224.00
15 5x38 6 ply	225.00
16 9x38 6 ply	279.00
18 4x38 6 ply	325.00
18 4x38 8 ply	365.00
20 8x38 8 ply	

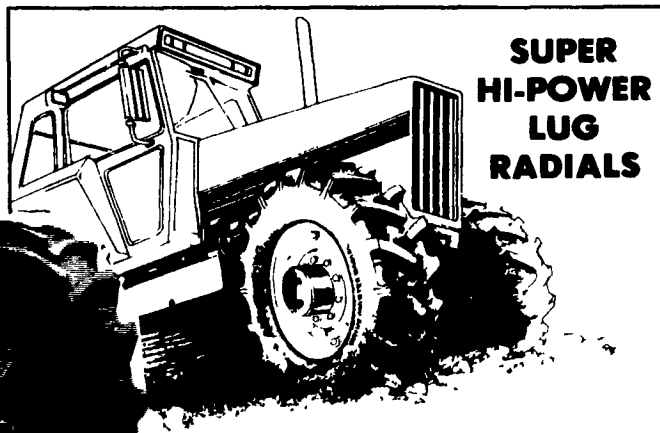
**OVER 15,000 TIRES IN STOCK!**

### WAGON TIRES



26 1200x12 4 ply	49.00
8 5Lx14 6 ply	41.00
9 5Lx14 6 ply	44.00
9 5Lx14 8 ply	49.50
11Lx14 6 ply	49.00
9 5Lx15 6 ply	42.00
9 5Lx15 8 ply	44.00
11Lx15 6 ply	43.00
11Lx15 8 ply	47.00
25x7 50x15 4 Ply Tubeless	44.00
25x7 50x15 6 Ply Tubeless	49.00
27x9 50x15 4 Ply Tubeless	53.00
27x9 50x15 6 Ply Tubeless	60.00
27x9 50x15 8 Ply Tubeless	66.00
31x13 50x15 6 Ply Tubeless	88.00
31x13 50x15 8 Ply Tubeless	99.00
11Lx15 8 ply tubeless	50.00
11Lx16 8 ply	58.00
11Lx16 10 ply tubeless	74.00
12 5Lx15 10 ply	75.00
12 5Lx16 14 ply	85.00
14Lx16 1 12 ply	140.00
16 5Lx16 1 10 ply tubeless	160.00

Deduct \$5.00 Farm Show Special  
Deduct Extra \$3.00 Plus Free Cap If Picked Up At Our Store



### SUPER HI-POWER LUG RADIALS

14 9R28 10 Ply	\$325.00
16 9R28 10 Ply	\$399.00
18 4R34 6 Ply	\$399.00
16R38 6 Ply	\$429.00
18 4R38 6 Ply	\$459.00
18 4R38 8 Ply	\$529.00
18 4R26 10 Ply	\$449.00
20R34 8 Ply	\$639.00
20 8R38 8 Ply	\$649.00
20 8R38 10 Ply	\$699.00

- Free Mounting During January When You Buy The Pair In Eastern Pa., Parts Of Western Pa., Most Parts Of New Jersey And Northern MD, And Delaware.
- Ask About Armstrong Spring Dating Terms!
- Ask About The Best Warranty In The Industry!

### Skid Loader Tires

700x15 6 ply	\$65.00
750x15 6 ply	\$68.00
10-16.5 6 ply	\$80.00
12-16.5 8 ply	\$120.00
Steel Shield 10-16.5 6 ply	\$95.00

Above Tires Shipped To You FREE

Deduct \$5.00 If You Pick Up At Our Store During Farm Show Week!

Visit Our Used Tire Location At Mummaw Family Farm - Rt. 283 Rheems Exit - Just 1 Mile From Store- **20% OFF ALL USED TIRES** We Understand Your Wants And Needs!

- ★ Close Outs On BFG & Goodyear - Call For Quotes!
- ★ Call Jim For Farm Show Specials On Car Tires!

Visit Our Store For Free Armstrong Cap During Farm Show Week, No Purchase Necessary - Bring Coupon!

Name \_\_\_\_\_  
Address \_\_\_\_\_  
Town \_\_\_\_\_ State \_\_\_\_\_  
Zip \_\_\_\_\_ Phone \_\_\_\_\_  
• Children Get Free Tablets

### Contractor F-3

11Lx15 8 ply	\$80.00
11Lx16 8 ply	\$92.00
11Lx16 10 ply	\$98.00
750 800x16 10 ply	\$80.00
11Lx16 12 ply	\$130.00
145 75 16 1 10 ply	\$225.00

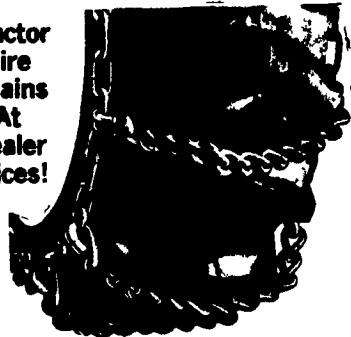


### Small Rear Farm

750x20 4 ply	59.95
750x24 4 ply	64.95
8 3x24 4 ply	79.00
9 5x24 4 ply	84.00
11 2x34 4 ply	135.00
11 2x36 4 ply	137.00
12 4x36 4 ply	175.00
13 6x36 4 ply	189.00

★ Free CAP ONLY ★

### Tractor Tire Chains At Dealer Prices!



**10% OFF DEALER PRICE IF PICKED UP DURING FARM SHOW!**

Ask About Our 4 Year Guarantee On Rear Tires Strongest In The Country

### We Install Tires On Your Farm

- Centre Hall • Williamsport
- Sunbury • Allentown
- North Penna. • New Jersey
- Northern Maryland

Route 230 West

## MUMMAU TIRE

Mt Joy PA

Serving Farmers In Penna. New Jersey Northern Maryland and Delaware

Out Of State 717-653-1260 In Penna. 1-800-222-1723