



Chester County DHIA Monthly Report

Chris&Ches Stoltzfus	3	55	8	85	5	17,348	685
Maplesway Farm	3	65	5	88	5	18,411	685
Hargret Dairy Inc	B3	49	9	85	3	18,483	684
Dale Hostetter	3	49	5	88	0	19,262	683
Leon D Kurtz	3	42	1	83	9	19,140	682
Mrs John B Hannum 3d	B3	91	2	87	9	19,501	681
Round Top Farm	B3	85	7	83	3	18,959	681
Jesse E Lair	B3	86	0	86	5	19,785	679
Spring Aqua Farm	3	86	0	89	1	19,066	677
David E Weaver	3	96	8	85	5	17,713	676
Donald M Horning	B3	49	2	86	9	18,356	674
J Harold Bare	3	65	6	82	2	18,003	673
Elmer A Mast	B3	83	9	87	7	17,385	673
Harold R Kulp	B3	79	3	87	4	17,893	671
Herman Stoltzfus	3	51	1	87	0	18,234	671
Pei Valley Farm	B3	72	5	87	2	17,976	669
Thomas C Kearns	B3	47	0	87	8	18,321	666
Ben Beiler & T Barlow	3	95	1	83	5	17,834	665
Timberview Farm	3	58	6	87	6	16,625	665
Swan View	3	61	7	86	1	18,257	664
Louis C Neyman	G3	27	7	88	5	17,468	663
Mast Stoltzfus	3	41	1	89	3	17,665	661
Charles J Moore	B3	44	9	83	4	18,837	657
Abner R King	B3	36	9	86	2	17,050	656
Mark&Melody Stoltzfus	B3	54	8	82	8	17,578	655
Donald Hostetter	3	84	0	84	8	17,728	653
Lloyd Mast & Sons	3	128	1	88	1	16,898	653
Lester Eby	3	59	0	89	3	18,232	652
Daniel M Stoltzfus	B3	49	6	82	4	17,014	651
Samuel B Acker	B3	175	0	89	3	17,019	650

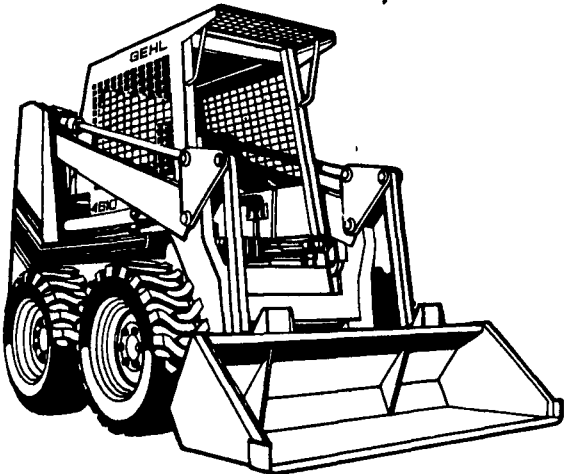
Melwood Farm								
Nora	3	6	0	305	31,741	3	5	1113
Bev	3	3	2	305	26,413	3	8	1006
Cora	3	3	3	305	22,898	3	9	888
Chester Hills Farm								
W203	3	6	8	305	21,814	5	0	1098
W274	3	5	0	305	23,291	3	4	802
Vernon Guest & Son								
Clara	3	6	6	305	24,381	4	4	1070
Corrine	3	3	5	305	21,213	3	9	820
Dunwood Farm								
Lily	3	7	3	305	29,943	3	5	1041
Star ET	3	4	10	305	21,520	4	0	870
Ardrossan Farms								
C Betty	1	11	6	305	28,066	3	7	1025
P Noted	1	8	2	305	23,697	4	2	986
B Eye	1	4	10	305	18,085	4	7	845
Snochld	1	5	0	305	20,316	4	1	840
Sroslee	1	10	4	305	21,280	3	9	827
Charlet	1	7	7	305	21,836	3	7	816

Harold J Ranck								
Regal	3	5	3	305	24,371	4	1	1003
Willowland Farm								
Snowete	3	3	0	305	25,735	3	8	989
Bright Meadows								
30	3	5	2	295	22,275	4	4	976
Swan View								
Joy	3	7	2	305	26,975	3	6	968
Nedra	3	3	9	305	23,294	3	9	914
Spring Aqua Farm								
165	2	6	3	305	25,173	3	8	964
37	3	4	4	305	25,803	3	2	832
Wilmer L Hostetter								
Sue	3	3	5	305	22,412	4	3	963
Glory	3	4	5	305	22,555	3	9	875
Marilyn	3	4	4	305	24,749	3	4	834
Venus	3	4	3	305	23,166	3	6	825
Dot	3	4	5	305	24,476	3	3	808
Donald Hostetter Jr								
Ivory	3	5	5	305	25,706	3	7	962
Marian	3	6	3	305	23,986	3	7	896
Betty 34	3	4	1	305	21,928	3	9	864
Deb 50	3	4	3	305	18,817	4	4	832
Sally	3	6	7	305	22,058	3	7	821
Kenneth Umble								
Elmira	3	5	11	305	26,407	3	6	960
Dixie	3	7	2	305	24,480	3	6	889
Rosanna	3	6	9	305	26,083	3	4	886
Arthur D Hershey								
Nora 33	3	4	11	305	25,074	3	8	955
Robert E Pepple								
70	3	5	5	297	20,003	4	8	953
7	3	4	5	305	19,600	4	3	839
86	3	5	4	305	25,530	3	2	805
Hargret Dairy Inc								
103	3	8	2	305	24,221	3	9	950
041	3	3	6	305	25,674	3	6	919
H & R Mason								
182	3	3	2	305	26,153	3	6	949
133	3	4	4	305	23,322	3	7	872
Glen H Freese								
Marie44	3	4	3	302	24,914	3	8	946
Daniel M Stoltzfus								
Alta	3	5	3	305	21,593	4	3	933
George Strutynski								
228	3	8	6	305	20,779	4	4	921
62	3	7	2	305	21,962	3	9	846
Jonas B Stoltzfus								
Greta	3	6	6	305	25,975	3	5	918
Brook	3	3	5	305	27,195	3	3	889
Elmer A Mast								
Jen 96	3	3	1	305	24,167	3	8	917

(Turn to Page E10)

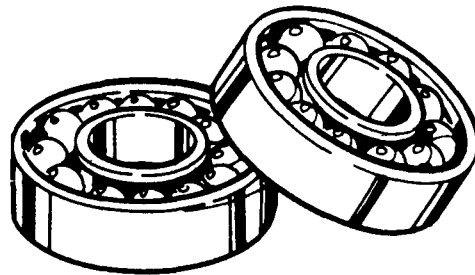
Owner	Brd.	Age	No. Cows	Days In Milk	Lbs. Milk	Lbs. Fat
CHESTER COUNTY DHIA November, 1985						
Melwood Farm	3	36	3	90	3	891
H & R Mason	3	122	1	90	8	800
Ardrossan Farms	1	126	1	87	0	799
Robert E Pepple	3	63	9	86	9	784
Dunwood Farm	3	57	0	87	4	776
Jonas B Stoltzfus	3	47	5	87	1	754
Joseph Lusby	B3	47	9	85	4	736
George P Lamborn	3	36	3	88	2	734
Richard Hostetter	B3	43	5	87	6	731
Kenneth Umble	3	58	1	89	1	731
Bright Meadows	B3	70	0	83	1	727
John S Stoltzfus	3	73	8	89	1	726
Breck-A-De Farm	3	78	9	86	5	725
Kulp Bros	B3	88	0	86	7	717
David K Stoltzfus	B3	45	4	83	2	717
Vernon Guest & Son	B3	95	1	87	0	716
Ridglea Farm	3	96	1	87	5	711
Jefferson D Yoder	3	69	7	88	9	711
Glen H Freese	3	69	1	88	8	708
Willowland Farm	3	61	1	87	9	704
James V Yale	B3	67	8	91	3	704
Wilmer L Hostetter	3	50	2	86	1	703
Paul King	3	72	8	94	2	698
Floyd Miller & Sons	B3	68	6	87	2	694
Arthur D Hershey	3	50	1	87	3	691
David&Dawn Windle	3	55	6	86	0	689
Benjamin K Kauffman	B3	41	3	89	3	687
Merle J King	B3	84	9	87	4	687

Totally New!!



We've just received our first shipment of new Gehl 4010 skid loaders! Totally New! Totally World Class Performers! Self-Leveling is standard. Full attachment selection. Side-mounted T-Bar controls. Gas or diesel. Stop by and take a performance test drive today!!

Gehl parts last longer



If you've had your Gehl equipment for a while, you know it's built to last. But sooner or later you'll need a replacement part. And that's when you need an *original* Gehl part. Because you can be sure it's made to give you the same dependable service as the original. We can provide the exact part you need . . . fast. At a good price. So stop in when you want the real thing . . . a genuine Gehl part.

WAIVER OF FINANCE UNTIL SEPTEMBER 1, 1986 ON ALL GEHL EQUIPMENT

With 30% Down Payment Cash Or Trade In

See Your Dealer Today

STOFFER BROS. INC.
Chambersburg, PA
717-263-8424

PEOPLE'S SALES & SERVICE
Oakland Mills, PA
717-463-2735

GEO. W. KINSMAN, INC.
516 Main Street
Honesdale, PA
717-253-3440

PETERMAN FARM EQUIPMENT, INC.
225 York Rd
Carlisle, PA
717-249-5338

BENNETT MACHINE CO.
1601 S Dupont Blvd
Milford, DE
302-422-4837

MILLER EQUIPMENT CO.
RD 1
Bechtelsville, PA
215-845-2911

SUMMIT SYSTEMS, INC.
Breezewood, PA
800-242-3240
814-735-3293

LEBANON VALLEY IMPLEMENT CO., INC.
Richland, PA
717-866-7518

HINES EQUIPMENT
Cresson, PA
814-886-4183
Bellwood
814-742-8171

BINKLEY & HURST BROS.
133 Rothsville
Station Road
Litz, PA
717-626-4705

ECKROTH BROS. FARM EQUIPMENT
RT 2 Box 24A
New Ringgold, PA
717-943-2131

NICHOLS FARM EQUIPMENT
Bloomsburg, PA
717-784-7731

UMBERGER'S OF FONTANA
Rt 4 Lebanon, PA
(Fontana)
717-867-5161

A.L. HERR & BRO.
Quarryville, PA
717-786-3521

ARNETT'S GARAGE
Rt. 9 Box 125
Hagerstown, MD
301-733-0515

SEE US AT THE PA FARM SHOW
January 12-17

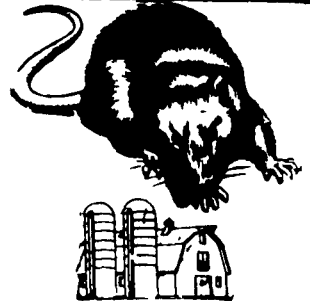
Feed additive increases intake

REDMOND, WA. — Bio Techniques Laboratories' newest product, Cobactin has been shown in controlled feedlot, dairy and university studies, to be a safe and effective means to increase cattle feed intake, productivity and to reduce scours and disease.

Cobactin microbial gastrointestinal stabilizer, reestablishes a positive gut microflora in animals under stress. Cobactin is available in three formulations: Cobactin CF, for calves on liquid diets; Cobactin SF, a starter-booster formula for incoming and stressed feedlot and dairy cattle; and Cobactin DR, a daily ration formulation.

For more information contact, Bio Techniques Laboratories, Inc., 15555 N.E. 33rd Bio Tech Road, Redmond, WA 98052.

ATTENTION FARMERS... FREE ESTIMATES ON RODENT CONTROL



RODENTS carry diseases which can endanger the health of your poultry flocks. Your business is raising them. Ours is protecting them.

We Specialize In Sanitizing And Disinfecting Poultry Houses

Fhrlich

Since 1928 Pest control is too important to trust to anyone else

Lancaster, PA 397-3721
Lewistown, PA 248-0983
State College, PA 237-7607