

ag

JAN 20 1986

# Lancaster Farming

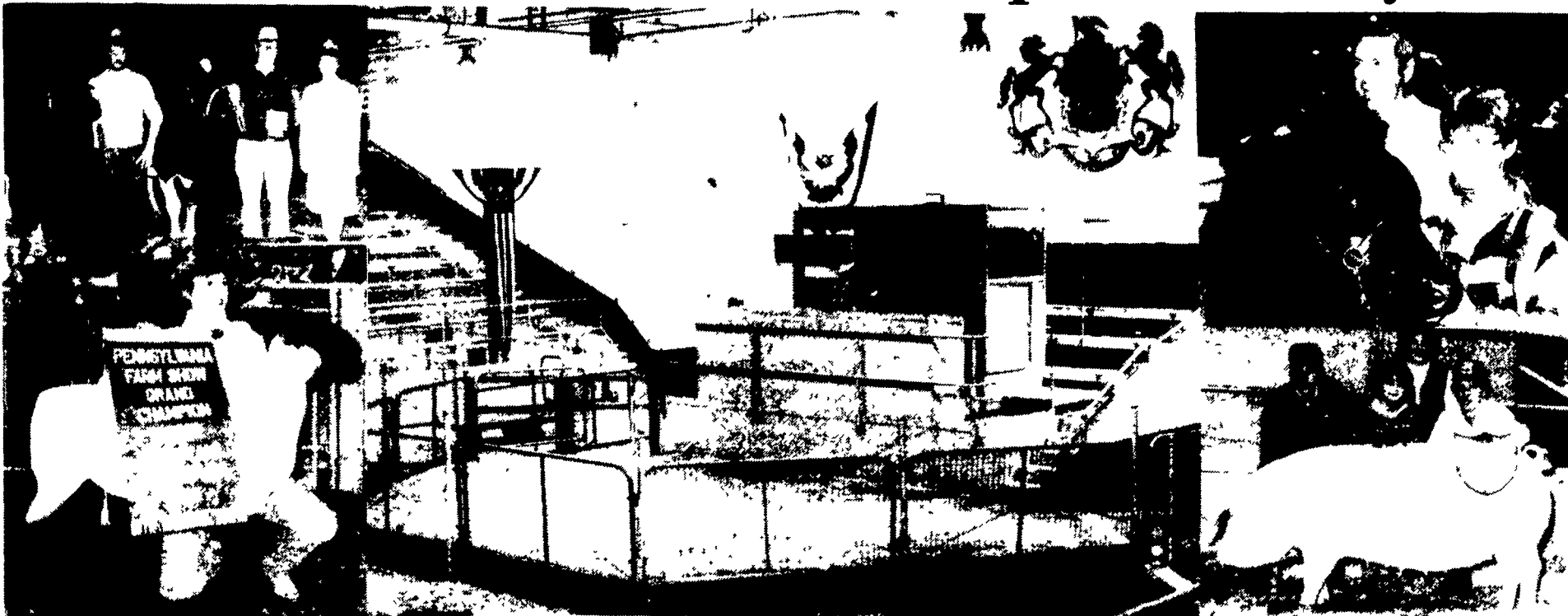
VOL. 31 No. 11

Six Sections

Lancaster Farming, Saturday, January 11, 1986

\$7.50 per Year

## 70th annual Farm Show opens Sunday



An empty arena awaits the crowning of the new Farm show champions this week. On the sides are last year's champions, top left, Holstein reserve champion Scott Fisher, left and grand champion winner Donald Hostetter with state Dairy Princess Lynette Loper. Bottom left, Margaret Herr of Lancaster

County with her grand champion market lamb. Top right, Kelly Rohrer of Manheim is congratulated by then-Ag Secretary Penrose Hallowell, after winning the Grand Champion Junior Beef Steer competition. And bottom right, veteran Landrace exhibitors Harold II, Barbara Sue, Barbara Ann and John Mummert pose with their champion gilt.

HARRISBURG — The 70th Annual Pennsylvania Farm Show will open Sunday in Harrisburg and continue through the week. Featuring a host of contests, exhibits and foods, this event seeks

to promote Pennsylvania agriculture by recognizing the outstanding achievements of the state's largest industry.

With the theme "Pennsylvania Agriculture — Growing Ideas for

the Future," this year's show will emphasize the accomplishments, leadership and technological impact of Pennsylvania agriculture.

Farmers, agricultural and

agribusiness leaders from at least 20 states, Canada and several other nations, as well as visitors from cities and suburbs around the state flock to the Farm Show Complex every January for this

unique event.

Events open to the public begin at noon on Sunday with grand opening ceremonies conducted by Governor Thornburgh in the large

(Turn to Page A19)

## Avian influenza outbreak reported in Snyder County

BY JACK HUBLEY

HARRISBURG — For the first time since the final quarantine was lifted on Oct. 4, 1964, the avian influenza virus has surfaced in a Pennsylvania poultry flock, according to the Pennsylvania Department of Agriculture's Bureau of Animal Industry.

Discovered in a Freeburg-area (Snyder Co.) broiler flock, the

virus was first diagnosed at Penn State's diagnostic laboratory by Dr. David Kradel shortly after an infected sample of birds arrived on Dec. 30. Samples were then sent to the USDA's National Veterinary Services Lab in Ames, Iowa, and Kradel reports that he received the test results on Jan. 8.

"At this point we do have a confirmed diagnosis of avian in-

fluenza," Kradel said during an interview on Thursday. "And based on blood serology, it does appear to be H5N2." The label H5N2 refers to the same type of virus that decimated flocks of laying hens, broilers and turkeys in southeastern Pennsylvania beginning in the spring of 1983.

The veterinarian stressed, however, that officials do not know just how virulent the current outbreak is. Mortality in the infected flock reached about 18 percent before the flock actually returned to a "basically normal" condition, he said.

"Not all H5N2's are highly pathogenic," Kradel pointed out. According to one USDA report, avian flu virulence was highly variable during the original outbreak, with death losses ranging from five percent of infected flocks early in the outbreak, to losses in excess of 90 percent beginning in Oct. 1983.

Although the origin of the current outbreak is unknown, officials may have a lead. "The initial information I have suggests that a possible source of introduction could have been some interstate haulers who had been there on Dec. 16," Kradel said. According to the veterinarian, a

truck from New Jersey had arrived at the farm to pick up a partial load of birds bound for New York.

According to BAI director Dr.

Max Van Buskirk, the flock of about 8,000 seven-week-old roasters was scheduled to be destroyed yesterday. ("Roaster"

(Turn to Page A22)

## Gehringer named to Lancaster Farming staff

LITITZ — Lancaster Farming is pleased to announce the appointment of Martha J. Gehringer as dairy editor.

Gehringer grew up on her family's farm in Bally. There her father and uncle maintain a herd of Holstein and Brown Swiss. She gained her interest in the dairy field through numerous 4-H dairy projects. She continues to work with 4-Hers in the role of leader with Montgomery County.

Gehringer attained her bachelor's degree in dairy husbandry from Delaware Valley College in 1983. While there she served as a feature writer for the college newspaper as well as editor of the college magazine. For the past five years she has worked with Lancaster Farming as a correspondent. Previously she was employed by



Martha J. Gehringer

Atlantic Breeders Cooperative as a roving sales technician traveling throughout the state breeding cows.

## Farm Show highlights

Agribusiness Award.....	A24
Master Shepherds.....	A28
Spickler's Ayrshires.....	A33
Spring Glen Farm Kitchen.....	B14
Jerry Barker's Trees.....	B16
Superstock Tractor Puller.....	B22
Shenk sister's.....	B26
Ethel Zimmerman.....	B26
Kohr's twin entries.....	B28
Ken Walker.....	C2
Pa. Keystone Winners.....	D2-E6
Farm Show Schedule.....	D17
Farm Show Map.....	D18-20
John Eaton.....	E32
Nissley Family.....	F8

Visit the Lancaster Farming booth (No. 274) at the Farm Show