

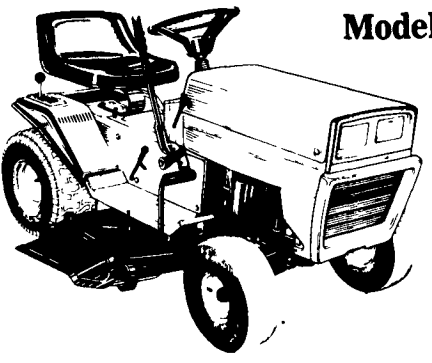


PA. FARM SHOW LAWN & GARDEN LAY-AWAY SALE

10% Down Holds Your Purchase Until April 1st

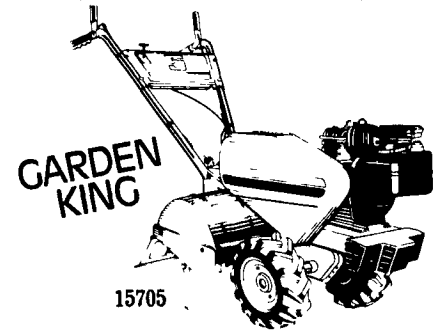
RANCH KING

11 HP/38" Cut/7-Speed
Model 135-668-205



Reg. \$1,049
FARM SHOW SPECIAL
\$899.00

- 15.00"x6.00" tubeless front tires
- 18.00"x9.50" tubeless rear tires
- 11 HP B & S engine, 24.36 cu. in., synchro-balanced
- 12-volt alternator/starter
- Safety interlock system
- 7-speed Transmatic*
- Two belt driven 19" blades
- 5-position cutting height adjustment
- Headlights and ammeter

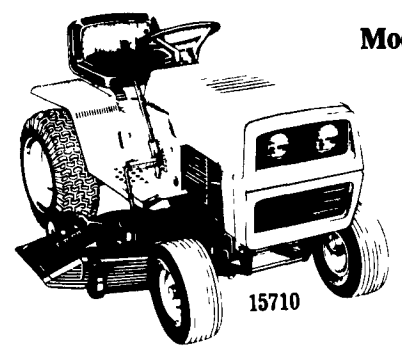


GARDEN KING
15705
5 HP Reverse Direction Tines (RDT)
Model 215-404-205

- 18" Width • Reverse-direction tine operation
 - Adjustable side panels to control overspill of soil
 - Zero turning radius — ratchet assembly in wheels
 - 3-step chain reduction tine drive
 - 4-step chain reduction wheel drive
 - Independent wheel and tine engagement
 - 12.00"x4.00" pneumatic tires, tractor lug tread
 - 5 HP B & S engine, 12.57 cu. in.
- Reg. \$549.00
FARM SHOW SPECIAL **\$499.00**



RANCH KING GARDEN TRACTOR



Model 145-834

Reg. \$1,799
FARM SHOW SPECIAL

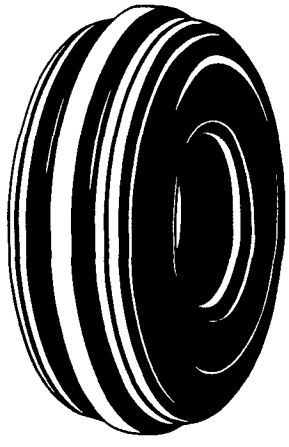
\$1,599.00 Complete w/44" Mower Deck

- 18 HP B&S Cast Iron Sleeve, Twin Cylinder Engine
- 23.00x9.50 Rear Tires
- 4 Speed Cast Iron Transaxle
- Full Range Of Accessories

FARM TRACTOR BATTERIES



Group Size	Warranty	C.C.A.	Reg. w/Trade	SALE w/Trade
1DT	36	585	\$ 37.99	\$29.99
2DT	36	625	\$ 42.99	\$38.99
3DT	36	625	\$ 45.99	\$41.99
4DT	36	760	\$ 54.99	\$49.99
4D	24	630	\$104.99	\$94.99
5DA	24	830	\$ 59.99	\$53.99
7D	24	985	\$ 74.99	\$67.99
30HDT	24	525	\$ 59.99	\$53.99
3EHDT	24	830	\$ 58.99	\$53.99
4EHDT	24	930	\$ 59.99	\$62.99
3ETDT	24	460	\$ 58.99	\$53.99
4DLT	24	750	\$ 96.99	\$87.99
16TF-DC	24	600	\$ 99.99	\$89.99
17TF-DC	24	510	\$ 75.99	\$68.99
3EEDT	24	340	\$ 47.99	\$43.99
60D	48	385	\$ 47.99	\$43.99
31x7	24	625	\$ 72.99	\$65.99

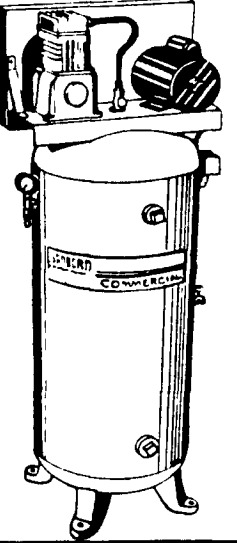


HI-RIB FARM FRONTS

- Nylon Cord Body
- Positive Steering
- Hi Flotation

SIZE	PR	REG PRICE	SALE PRICE
TUBE TYPE, NYLON			
4 00-15	4	\$27.99	\$23.99
5 00-15	4	\$31.99	\$27.99
7 51-15	6	\$50.99	\$44.99
11L-15	6	\$78.99	\$70.99
5 50-16	4	\$36.99	\$32.99
5 50-16	6	\$41.99	\$36.99
6 00-16	4	\$37.99	\$33.99
6 00-16	6	\$42.99	\$37.99
6 50-16	6	\$45.99	\$40.99
7 50-16	8	\$57.99	\$51.99
10 00-16	8	\$82.99	\$73.99
11 00-16	8	\$104.99	\$92.99

SANBORN AIR COMPRESSORS



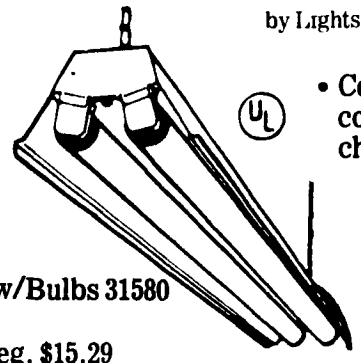
5 H.P. 60 GALLON
Vertical
AIR COMPRESSOR
70648

- Cast Iron Sleeve Twin Compressor
- 15.1 CFM Displacement
- Belt Guard

Reg. \$599.95
FARM SHOW SPECIAL
\$539.95

SHOP LIGHT

by Lights of America



- Complete with cord, plug and chain hanging kit

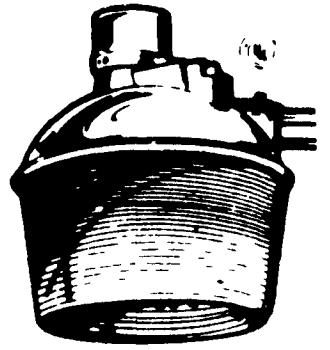
w/Bulbs 31580
Reg. \$15.29
NOW...\$11.99
AFTER \$2.00 REBATE.....**\$9.99**
Rebate Good Till Jan. 15, 1986

DUSK TO DAWN SECURITY LIGHT

By Phillips

Dusk To Dawn

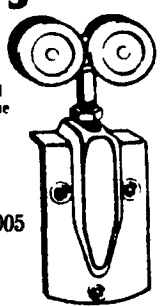
- 175 Watt Mercury Vapor Lamp



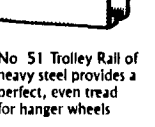
30860
Reg. \$34.95
\$29.99

Hangers protect sliding doors

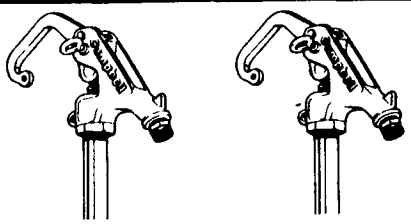
Hang wood frame sliding doors with National's heavy gauge, flexible and adjustable trolley hangers. Hinged joints minimize damage from wind or bumps. Lifetime wheel bearings never require lubrication.



- SKU 22191 HANGER
Reg \$21.19
NOW... **\$14.99**
- SKU 24715, 8' Rail
Reg \$19.39
NOW **\$15.99**
- SKU 22185, 10' Rail
Reg \$24.19
NOW **\$19.99**
- SKU 22190, 12' Rail
Reg \$28.99
NOW **\$23.99**



We Have Everything In Stock Needed To Make Complete Track



Campbell

water system products

YARD HYDRANTS

- 4 Ft., #28977
SALE... **\$29.99**
- 3 Ft., #28976
SALE... **\$27.99**

RUST-OLEUM® IMPLEMENT PAINT



RUST-OLEUM

STOPS RUST!

PROTECTIVE COATINGS

Don't Just Paint With It...
Protect With It

JD, IH, Ford, Allis, Caterpillar

- 13 oz. Spray Reg. \$3.59 **\$2.99**
- Qt. Reg. \$5.99 **\$4.99**