

**Do You Really Want To Sell Your Farm or Land?**  
 Contact:  
**VanCleve Real Estate**  
**717-392-3032**

**Southern Huntingdon Co.**  
 Dairy farm 175 acres w/150 acres tillable, large barn w/44 stanchions, 2 nice homes, stream & good spring on property Many other extras \$285,000  
**Colonial Real Estate Agency**  
**814-447-5511**



**new pennsylvania realty, inc.**  
**717-386-5000**

**BERKS COUNTY FARMS**  
 Excellent dairy w/60 stalls, pipeline, bulk tank, 3 silos. Don't Miss This Opportunity. This is a good working farm. Priced to Sell.

**HOGS**  
 Farrow to finishing w/112 acres, all in one continuous tract w/approx. 5,000' of road frontage, excellent location; Myerstown area. Must Be Sold.

**CALL CARL JOHNSON - 215-367-6160**

**FOR SALE OR LEASE**

**Established Agriculture Business**  
 Located in the heart of Martinsburg, Penn. Two miles south of Martinsburg, Cove. Consisting of 1.6 acres of ground, which includes 3 warehouses and a garage of a total of 19,000 sq. ft.

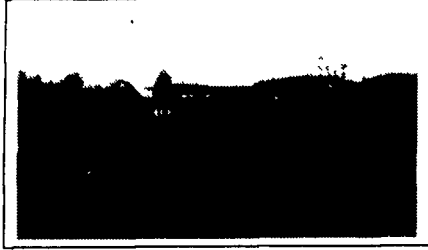
**Fertilizer Equipment Available. Plus Other Equipment.**

*Excellent Location and Facilities.*

**Call For Other Possible Arrangements**  
**Phone 814-793-2118**

**HAYS CREEK FARM**

Fine 245 acre livestock farm in charming rural community 80 acres of rich cropland 165 acres of improved pasture farmstead and woods Large two story frame home in excellent condition Complete livestock facilities include barn silo working pens scales and auxiliary buildings Abundant water from bold creek stream and springs Long road frontage Beautiful terrain and views  
**\$350,000**



**FREE CATALOG OF COUNTRY PLACES**

**JAMES WM. MOORE**  
 Accredited Farm & Land Broker  
 Home 703/463 7050

**MEAD ASSOCIATES**  
 INCORPORATED  
 Real Estate Services

**G. OTIS MEAD III**  
 Accredited Farm & Land Broker  
 Home 703/463 2740

21 North Main Street, Lexington, Virginia 24450 Telephone 703/463-7168



**SANFORD G. LEAMAN, REALTOR**

**717-569-4264**  
**Auctioneer**

**ESTATES • APPRAISALS • LIQUIDATIONS**

- Perry Co** Two farms totaling 316 acres with 66 cow tie barn free stalls lagoon lots of implement and young stock facilities 2 beautiful dwelling and super fertile limestone soil spring possession Call Sandy 717 569 4264
- 32 Stanchion** 140 acre dairy in Blaine area with brick house silo implement shed spring possession Owner will finance with easy terms Call today don't miss this one! Call Sandy 717 569 4264
- Bradford Co** 106 acre modern dairy 59 stanchions 4 silos large YS area FHA assumable mortgage if you qualify at low interest Call John Bomberger 717 649 5861
- Blair Co** Large 200 acre grain & beef farm 400+ acres available of low rent super modern house 30 000 bushel grain facility Call John Bomberger 717 649 5861
- Snyder Co** 399 acre dairy 2 sets of buildings silos pond modern dwelling lots of implement storage in Middleburg area Leroy Hibbs 717 837 0265
- Lebanon Co** Poultry and general farm w super modern home in ground pool Call Ken Young 717 426 1098
- 106 acre** free stall w modern milking parlor Harvestore Slurry modern house and lots of other buildings A Super buy Owners open to offer Call Ken Young 717 426 1098

**"We Serve Your Farm Needs"**

Call

- LANCASTER COUNTY CALL KEN YOUNG 717 426-1098 OR SANDY LEAMAN 717 569-4264
- SNYDER & UNION CO CALL LEROY HIBBS AT 717 837-0265
- NORTHUMBERLAND LYCOMING MONTOUR COUNTIES CALL JOHN BOMBERGER 717 649 5861
- DAUPHIN COUNTY CALL PAT KAUFFMAN 717 896 8958
- BRADFORD COUNTY CALL BARBARA LA MONT 717 297 2619

**FARMS FOR SALE**

- \* New Listing - Lycoming Co., 88 Acre Dairy
  - \* New Listing - Berks Co. near Oley 109 Acre Dairy Farm
  - \* Chester Co. S. of Oxford 39 acre (Former) dairy
  - \* 60 Acre Modern Dairy, Lebanon Co
  - \* Chester Co. Farmette.
  - \* 90 Acres Lancaster Co.
  - \* New Listing - Cumberland Co 120 A Dairy near Shippensburg
- Call James Marsh about the above properties  
 717-529-2678

- \* 209 Acres in Perry Co
  - \* 178 Acre Dairy, Perry Co
  - \* 100 Acre Woodland, Perry Co.
- Call Marlin Kreider about the above properties  
 717-627-8244

**GENERAL FARM**

- \* 101 Acre Dairy, Cumberland Co
  - \* New Listing - Cumberland Co 60 A General Farm
  - \* Over 250 Acre Dairy Farm Located NE of Hershey
  - \* 188 Acre General Farm, 2 mis E of Ship pensburg
  - \* 120 Acre Dairy, Union Co.
  - \* 4 Acre Industrial Just off new Rt 222 near the turnpike
  - \* 3 Acres Commercial on Rt 501 near Rt 76 in Bethel
  - \* New Listing - 1+ Acres commercial north of Ephrata long Rte 322
  - \* New Listing - 162 Acre Dairy in Franklin County
- Other farms in many counties available.

**CHRISTIAN M. MOSEMAN**  
 Real Estate Broker  
 734 Main St., Akron, PA 17501  
**Phone: 717-859-1004**  
 24 Hour Service  
 James L. Marsh, 717-529-2678  
 Marlin Kreider, 717-627-8244

**Steuben County, New York - Modern dairy farm, 380 acres, 300 tillable. Free stall barn for 100 head. 53 stanchions, attached heifer barn. Three concrete silos with bunk feeder. Up to date milk house, universal pipeline. Tool shed and heated shop. Grain dryer with 2-4000 bu. bins. Newer 4 bedroom ranch house, wood & electric heat. Sugar bush only 4 miles to milk plant Owner will finance \$310,000**

**207 Acre Dairy Farm** Older barn with 21 stanchions and an attached free stall barn with 64 stalls & bunk feeder. One concrete silo and two bunker silos. Grain set up with Steiner roller mixer. Milking equipment, 4 years old. (Dart Kool Heat exchanger) Clear Span 39x40 shop 4 bedroom farmhouse. wood heat, newer kitchen. A real nice starter farm with excellent alfalfa ground. Only \$247,500.

**Horse or Beef Farm** 217 acres, 170 tillable. Two barns, 4 bedroom house, 2 baths. Small fruit orchard, mostly secluded to grasses Pasture fenced with 5 strand wire 3 Miles from mall & 5 miles from airport. 20 minutes to Cornell College. Only \$160,000.

**Potato Farm** 367 total acres, 236 tillable. Potato cold storage, 5,000 bushel grain drying setup, two 5,000 bushel bins, six bedroom house. Land has been tested and found nematode free. Owner terms at 11%, only \$295,000.

**Open Land** 98 Acres, small pole barn, lots of water, perfect for sheep or beef. Only \$2,000.

**FOR MORE INFORMATION ABOUT THESE AND ANY OF OUR OTHER FARM LISTINGS, PLEASE CALL ONE OF OUR QUALIFIED FARM EXPERTS TODAY.**

**Century 21**  
**THE LANE AGENCY**  
 Rt. 54, Box 181-A  
 Bath, NY 14810  
**(607) 776-7682**



**BERKS CO.**

• 140 Acre Farm features lovely 2 1/2 story stone home, modern kitchen, dining room, living room, center hall, 4 large bedrooms & bath, large bank barn, 2 large machinery sheds, small horse barn, large storage bins, gently rolling land with pond & stream, \$460,000

76 Acres General Farm 2 1/2 story brick farmhouse, needs work, 2 story bank barn, double corn crib, large stream, private setting, \$150,000

**SCHUYLKILL COUNTY**

• 234 acre woodland tract, joins state gamelands, borders Rt 81 & secondary road, Pine Grove area, good hunting area, call for details, \$175,000

**OTHER FARMS AVAILABLE**  
 Please Call and Tell Us Your Preference

**PAUL M. LONGACRE**  
 Rt. 100 Hereford, PA 18056  
**Ph: 215-679-5919**

**MONTGOMERY COUNTY**

• 82 acres, 65 till, balance woodland & pasture w/stream general farm, 2 1/2 story 5 bedrm house/LR DR, Kitchen & bath bank barn & other buildings, ~~\$250,000~~ \$235 000

**TIoga COUNTY**

• 410 Acre, 220 tillable Dairy Farm with lovely 2 story home features good 46 stall dairy barn, pipeline, bulk tank barn cleaner 2nd house, new 45x72 machine shed, shop & heifer barn, 18x60 and 12x35 silos, pond, stream good ground, \$325,000 Cattle & machinery available

• 800 Acre Dairy Farm 400 T 2 very good, lovely homes 83 stall dairy barn Steel pipe line, 1000 gal tank and barn cleaner (2) 16x60 and (1) 14x40 silos with unloaders Large heifer barn \$365 000 Full line of machinery and cattle available

• 122 Acre, 100 T dairy farm, 47 tie stalls with 24 free stalls, 800 gallon tank, barn cleaner, pipeline milker, 20x60 concrete silo with unloader, good house with kitchen, dining room, 2 living rooms, 3 bedrooms and bath \$110,000

• 126 Acre farm, 70 T, 45 pasture, balance wood land Land only Near above farm \$65 000

**SNYDER COUNTY**

• 186 acre dairy farm, 100 T, features modern 60 free stall barn w/milking parlor, 2 story heifer barn, and large machinery shed 20x60 and 20x70 Harvestore silos, lovely 2 story home with 3 bedrooms, kitchen, large living room/dining room, laundry and bath \$210,000 Also full line of machinery available

**POTter COUNTY**

• 116 Acre, hunting ground 30 acres open balance wooded borders 2 roads & river Possible Owner financing \$50 000

**BRADFORD COUNTY**

• 110 Acre dairy farm 80 tillable 35 stall dairy barn with dump station barn cleaner 400 gal tank 18x55 silo and 14x60 silo with unloaders and 14x32 silo heifer barn and out buildings Large home with 5 bedrooms kitchen dining room living room, laundry and 2 baths \$150,000 Also cattle and machinery available under separate contract

• 5 acre Dairy Farm Modern 74 stall dairy barn Bulk tank steel pipe line, barn cleaner 20x32 Harvestore silo and 20x60 concrete silo Manure storage Modern Ranch home with 4BR's, Kit, DR, LR, Bath and Den \$145,000 Also second house available

**SUSQUEHANNA COUNTY**

• 265 Acre modern dairy farm w/2 houses, 115 comfort stall dairy barn with pipeline milker, 2 large bulk tanks, barn cleaner, 3 large concrete silos, large free stall heifer & dry cow facility & large machinery shed, calf barn, lovely split level home features modern kit, formal DR, LR, family room, laundry, 2 baths, 4 BRs Large in-ground heated pool 2nd 2 story home, modern kit, DR, LR, family room, 3 BRs, 1 1/2 baths Also, large new trailer 200 Head of dairy cattle, modern line of machinery including several large tractors All for \$600,000

• 565 Acre dairy farm Features 145 stall barn, heifer barn, large machinery shed, 2 1/2 story house with kitchen, dining room, living room, office, family room, laundry 3 bedrooms 1 1/2 baths 2nd House Modern 3 bedroom with kitchen dining room, living room and bath Apartment with modern kitchen living room dining room, 3 bedrooms, 1 1/2 baths 3rd House New 2 bedroom, kitchen, living room and bath \$750,000