

Livestock market and auction news

New Wilmington Livestock

New Wilmington, Pa.,
December 30, 1985

Report supplied by PDA

CATTLE 243. COMPARED WITH LAST WEEK'S MARKET: **SLAUGHTER COWS** STEADY...Few Choice slaughter steers 61.25-63, Good 54.75-60, Standard 47.50-53.50, Utility 40-45.75...Few Choice heifers 56.75-59.75, one at 62.75, One Good at 55.00, Standard 42.50-49.50, few Utility 36.00-40...Breaking Utility & Commercial slaughter cows 37.00-39, one at 40.00, few yield grade 4-5 34.75-36.50, Cutter & Boning Utility 33.50-37.50, Canner & Low Cutter 24.50-33.50, Shells down to 12.50...One Standard slaughter bullock at 44.00, few Utility 39.75-41.50...Couple Yield Grade No. 1 1435 lbs. slaughter bull at 43.75 and 1480 lbs. at 44.00; one #2 1120 lbs. at 37.25.

FEEDER CATTLE: Few

Medium Frame #1 330-500 lbs. steers 49-55.50, few Medium #2 330-600 lbs. 40-46.50...Few Medium Frame #1 375-600 lbs. heifers 40.00-46, few Medium & Large Frame #2 350-650 lbs. 34.00-38.00.

CALVES 356...Few Choice vealers 89.00-96, few Good 69.00-81, Standard & Good 90-125 lbs. 38.00-48, 65-85 lbs. 23.00-38, Utility 50-90 lbs. 10.00-25.00...**FARM CALVES:** Holstein Bulls 95-135 lbs. 68.00-102.50, few down to 50.00, couple lots Holstein Heifers 104 lbs. at 60.50, lot 120 lbs. at 61.50.

HOGS 421...Barrows and gilts about steady...US No. 1-2 210-245 lbs. barrows and gilts 46.00-47.35, No. 2-3 210-255 lbs. 45-46.50, No. 2-4 215-260 lbs. 42.00-45, No. 1-3 180-200 lbs. 37.25-40...Sows steady to strong...US No. 1-3 3-680 lbs. sows 35-40.50, few No. 2-3 3-545 lbs. 32-35.25...Boars 25.00-29.75.

FEEDER PIGS 47...US No. 1-3 10-20 lbs. feeder pigs 13.00-17, 35-45 lbs. 30.00-35, Utility 50-60 lbs. 21.00-25 - all per head.

SHEEP 125...High Choice & Prime 100-125 lbs. wooled slaughter lambs 55.00-65, Choice 85-100 lbs. 55.00-67, Good & Choice 60-85 lbs. 65.00-74.50. Few Slaughter ewes 5.00-20.00.

Omaha Weekly

Thursday, Jan. 2

Report Supplied by USDA

CATTLE: Slaughter steers and heifers sold steady to 50 cents lower this holiday shortened trading week. Bulk of trading took place early in the week with only minimal numbers on offer Tuesday. A holiday disrupted kill week coupled with fairly generous direct purchases were primary reasons for lower prices. Carcass beef prices held steady through Tuesday. Slaughter cows 50-1.00 lower. Bulls steady.

Estimated 4 day receipts of cattle this week 5,400 compared to actual 4 day receipts last week of 2,871 and actual 5 day receipts last year of 4,349. Slaughter steers accounted for 41 pct of receipts this week, slaughter heifers 47 pct,

slaughter cows 8 pct and feeder cattle 3 pct.

SLAUGHTER STEERS: Choice 2-4 1050-1350 lbs. 62.50-64.00. Mixed good and choice 2-3 1050-1250 lbs. 61.00-62.50. Good 60.00-61.00. Choice 2-3 1300-1500 lb. holsteins 54.50-55.00, part load 57.00. Mixed good and choice 2-3 1300-1550 lbs. 50.50-55.00.

SLAUGHTER HEIFERS: Choice 2-4 950-1150 lbs. 61.00-62.50, few packages totaling near a load 63.00. Mixed good and choice 2-3 950-1050 lbs. 60.00-61.50, good 57.50-60.00.

Average of LS 214 detailed price quotations for choice 900-1100 lb. steers 61.75, 1100-1300 lbs. 63.00. Average cost of slaughter steers this week 62.19, average weight 1195 lbs. compared to 62.52 and 1175 lbs. last week. Average cost of slaughter heifers this week 61.20, average weight 1063 lbs. compared to 61.03 and 1083 lbs. last week.

SLAUGHTER COWS: High cutter and boning utility 1-3 32.50-34.00, few high dressing to 35.25. Canner and low cutter 29.00-32.50.

SLAUGHTER BULLS: Few 1-2 1300-2000 lbs. 42.25-45.50.

New Holland Dairy

New Holland Sales Stables
Wednesday, Jan. 1

Report supplied by auction

Reported receipts of 80 cows. 59 heifers, and 21 bulls
Market lower

Load of PA fresh cows, 560.00-660.00.

Load of PA fresh cows, 510.00-885.00, springers 660.00-860.00.

Load of PA fresh cows, 530.00-725.00.

Load of Wisc. fresh cows, 775.00-875.00.

Load of NY fresh cows, 700.00-1200.00.

Load of PA fresh cows, 580.00-1200.00.

Locally consigned cows 435.00-860.00.

Springing heifers 425.00-735.00.

Open heifers 220.00-325.00.

Bulls 460.00-600.00

Green Dragon Livestock Sales

Location: Ephrata RD 4. 1 mile N. on North State St., Ephrata.

COWS COWS COWS SALE EVERY FRIDAY

Lots of good Northern Feeder & Stockers Slaughter Cows - Bull Steer, Veal-lamb

11:00 A.M.-Beef Sale 200-300 each week.

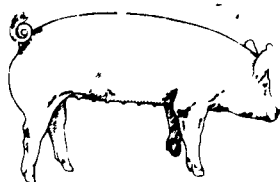
1:00 P.M.-Dairy Sale.

7:00 P.M.-Small Animal Sale.

For Special Sales and Herd Dispersals on farm or at our barn or other market information call: Office 717-733-2444, Home 717-838-4318.

WALTER H. RISSER, Proprietor

All out of state and new buyers must have cash or certified check or current letter of credit from bank.



EMERY'S BUYING STATION

OPEN TO RECEIVE YOUR MARKET HOGS

AT THE GREEN DRAGON MARKET
RD 4, EPHRATA, PA 17522
1 MILE NORTH OF EPHRATA
ON NORTH STATE STREET.

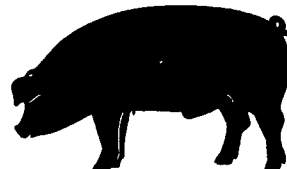
HOURS: MONDAY, TUESDAY, and WEDNESDAY 6:00 A.M. to 11:30 A.M.
215-458-5677 Residence
717-733-9648 Office

YOU ARE PAID FOR YOUR HOGS IMMEDIATELY

Ken & Lois Emery, Proprietors



GWALTNEY of SMITHFIELD, LTD.



We will be receiving hogs at Vintage Sales Stables in Paradise, Pa. Mondays, Wednesdays, Thursdays & Fridays from 7 a.m. to 12 noon
717-442-4742

ATTENTION YORK COUNTY HOG PRODUCERS

We will be receiving hogs at Thomasville, Pa. Tuesdays 7 a.m. to 12 noon
Futures forward contracts are available. No commission, paid promptly.
York County - **717-792-9836**

KING'S AUCTION, KIRKWOOD

Hay, Straw and Grain Auction
EVERY TUESDAY 12:00

Located Rt 472 5 miles south of Quarryville or 6 miles north of Oxford at Shaub's Auction House

Lloyd H. Kreider
Auctioneer
AU-000513L

No out of state checks
ALL TRUCKERS AND FARMERS WELCOME

HAY & STRAW SALE

12:00 Noon
Every Wednesday
Westend of Avondale at the intersection of Baltimore Pike and Route 41

Harvey Z. Martin
215-268-3604 (Office)
215-445-5303 (Residence)

MELHORN SALES, SERVICE, TRUCKING CO.

1010 W. Main St., Mount Joy, PA 17552

The only full service company, in this area, to handle the total needs of the poultrymen.

Which Includes:

- DEKALB chicks & started pullets sold by Clay Mumma, Nelson Groff & Harold Mishler.
- Complete loading & unloading of pullets & spent hens.
- New modern dollie equipment to move your pullets fast and efficiently with minimum stress to the pullets

Place Your Confidence In A Full Service Company That Wants To Be Worthy Of Your Business

For More Information Phone:
717-653-1102 or 717-653-2787

Monday - Friday 8 A.M. - 4 P.M. ask for Lynn or Wendy



***50 Per**

Round Turn Commission

All commodities plus stock indexes and bond futures. Full service. Call or write for our professional market letter. Specializing in commodities exclusively. * Volume discounts available.

800-322-9274
PA

800-523-9388
US

215-821-8111

Rosenthal

& Co.

2200 Hamilton Street
Allentown,
PA 18104