

32 MISCELLANEOUS

**New & Used Wood & Coal Stoves**  
Furnaces, Boilers,  
Over 50 Models.  
Coal In Kegs  
Heat Reclaimers.  
Gas Sniffers.  
WE TAKE  
TRADE-INS.  
Old Columbia  
Cookstove Parts.  
**HIESTAND  
SUPPLY CO.**  
Box 96  
Marietta, PA 17547  
(717) 426-1921

**THE DRY TOILET**

**Self-Contained Composting Toilet  
Needs No Water Or Chemicals**

Replaces conventional septic systems with a self-contained bioconversion appliance • Eliminates wastewater discharge  
• Constructed from rugged stainless steel and non porous plastic • Features positive venting for odor less operation • Easily maintained • The compact HUMUS 80 occupies only 25"x33" of floor space

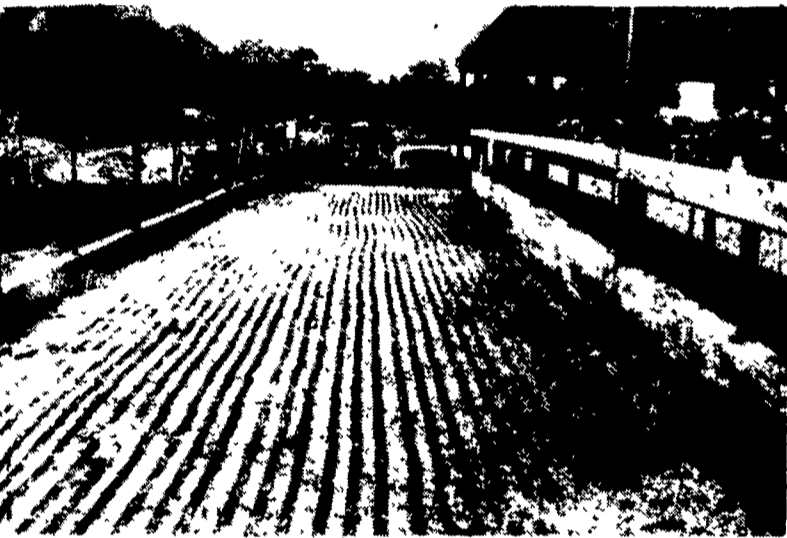


**Pump Services, Inc.**  
157 Knoxlyn Rd., Gettysburg, PA 17325  
(717) 334-0224 or (800) 242-3909

**SAVE VALUABLE COWS  
FROM FALLS ON SLICK CONCRETE**

Scabbling has become the most efficient way to end slick concrete problems. Hundreds of farmers have found it both effective and economical.

We have developed the right equipment at the right price with the know-how to back it up.



Now you can rent this equipment and do it yourself or we will contract to do the job for you. Call us collect for more information.

**SUBURBAN RENTALS, INC.**

Hagerstown MD Please call us Collect (301) 790-1303

Now serving a 10-state area

33 RECREATIONAL VEHICLES

1984 35' Mallard house trailer, never used. Two bedroom, one with queen-size bed, one with three single beds, full bath, pull-out living room with sofa. Fully furnished, \$10,000. 201-782-2293 between 9-5, ask for Bill.

1976 Mercedes 1113 truck, 80,000 miles, 25,000 GVW, good rubber and truck is excellent. \$3,750 Firm. 215-683-7943.

35 TRUCKS AND TRAILERS

1984 Bonanza Stock Trailer, 18', excellent cond., \$3,000. 717-354-6895 eves. after 6.

1980 GMC 7000, cab & chassis, 102" cab to axle, completely rebuilt Detroit 4-53 turbo, 5+2, PS, 900x20 tires, clean truck. Bucks Co., 215-297-8354.

1981 C-30 Chevy dump truck, 4x4, 4 speed, \$9,800; 1984 Hillsboro gooseneck trailer, 16' dump, 3 axle, \$5,700. 215-589-5228.

1981 Iveco 14' delivery van, Deutz diesel, 5SP, like new, 17+MPG, \$9,900. 717-859-3168.

1983 Ford Ranger, short bed w/cap, 4-spd., A/C, PS, AM-FM cassette, \$4900. or make offer. 215-588-7019 between 5 & 6PM.

**4 WHEEL DRIVE  
9.9% APR Financing  
To Qualified Buyer**

1984 FORD F250, 2 tone paint, long bed, 8 cyl., PS, PB, locking hubs, 12,000 orig. one owner miles.

1984 FORD BRONCO XLT, 8 cyl., 4 SP overdrive, PS, PB, cruise control, stereo cassette, captains' chair, Goodyear Wranglers on white spoked wheels.

1984 CHEVROLET SUBURBANS Choice of 2. Red/Silver, Brown/Tan. Both fully equipped and exceptionally maintained by previous owner

1984 FORD F150, 8 cyl., 4 SP Trans, 8 cyl engine, 2 tone black & silver paint w/red interior, diamond plate running board and step bumper, lock out hubs, only 32,000 mis

1984 CHEVROLET C10 Scottsdale, chrome bed, royal blue paint w/light blue interior, stereo, 8 cyl., 4 SP, cargo rails, white spoked wheels w/raised letter tires

1984 FORD F150 XLT, short bed, brown and tan 2 tone, 8 cyl., auto., running board, dual tank, 33x12.5 radial white letter tires on chrome wheels w/locking hub, chrome roll bar and light complete this unique package.

1983 JEEP WAGONEERS. Two to choose from. 1 limited and 1 standard, both 8 cyl., auto., and loaded w/equipment in exceptional cond.

1982 FORD F250 all white, 8 cyl., auto, PS, PB, rear step bumper, lockout hubs, extra nice, snow or work ready

1981 FORD F350, 8 cyl. auto., PS, PB, 2 tone red & white, running board, stereo, step bumper, 9.50x16.5LT snow tires, must see

1979 FORD BRONCO, RANGER XLT, maroon w/accent stripe, 8 cyl., auto., PS, PB, stereo w/cassette, bucket seats, white spoked wheels, exceptional.

1979 DODGE 150 Power Wagon w/Prospector Package, Brown w/contrasting saddle interior, 8 cyl., auto., PS, PB, air conditioning, cabover camper cap, trailer package equipped.

1979 JEEP CJ5, 6 cyl., 4 SP, new soft top, PS, PB, Myers 7' snow plow, new clutch, reconditioned to highest standards.

GMC SIERRA CLASSIC 15, 2 tone paint, silver over black, short bed, grey bucket seats w/console, stereo, 8 cyl., PS, PB, new 10/15 LC snows on chrome spoked wheels.

1978 JEEP WAGONEER, red paint w/black vinyl interior, 8 cyl., auto, PS, PB, air, stereo, exceptionally rust free car

1978 CHEVROLET SUBURBAN maroon 8 cyl., auto., PS, PB, air, reconditioned to our high standards, also choice of '78 GMC

1977 CHEVROLET BLAZER K5, 2 tone burnt orange and white, 8 cyl., auto., PS, PB, bucket seats, white spoked wheels and raised letter tires

20 more to choose from.  
For quick credit approval, call  
Troy Wible  
1-800-362-7655  
Rhodes Oldsmobile  
Gilbertsville, PA

**ROPE IN  
SOME EXTRA  
CASH!**

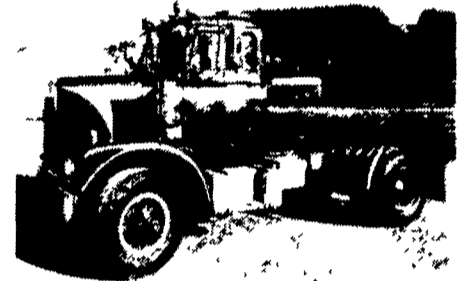
Advertise With A  
Lancaster Farming  
CLASSIFIED AD...

Phone: 717-394-3047  
or 717-626-1164



**'74 White Road Boss**

350 Cummins, 15 Speed Overdrive w/PTO, 23,000 lb. 2 Speed Rear, Jake Brake, Power Steering, Air Cond., 92" CA., No Rust, Lots of New & Rebuilt Components, Excellent Cond. \$13,900. Spreader Not Incl. 215-593-2495



1970 One Owner Diamond Reo NHC 250 Cummins with 90,000 miles on major overhaul  
13 speed transmission, 10x20 tires

Call  
717/684-2228 or  
717/285-3628

**KEYSTONE FORD TRUCK  
SALES, INC.**

Trucks are our only Business  
Interstate 83 at 322E, 470 Penhar Rd.  
Harrisburg, Pa. 17111

717-564-6661  
PA Watts 1-800-692-6235

Parts & Service Open 24 Hours A Day  
Sunday Midnight to Friday Midnight

1985 LT 9000 Tractor, 350 Cat., 13 Spd., Alum. Wheels, Loaded, Call For Further Specs & Pricing. Show Piece!

1979 KW, COE, 400 Cummings, Nice Truck

New 1986 Ford Cargo Truck In Stock With Ford Dsl. Engine

1978 LN 7000, 175 Cat., 5+2 Speed, Power Steering, 20 Ft. Van Body

1974 F750, 361, 5+2 Speed, Power Steering, 10 Ft. Dump, 10 Ft. Snow Plow

1984 E250 Ford Club Wagon, 6.9 Diesel, Auto. Steering, Brakes, PS, PB, Air Conditioning, Loader, 4 Captains Chairs and Bench Seat

1980 R686 ST Mac Tractor, 300 HP, 5 Speed Trans.

1979 LN 9000 Tractor, 230 Cummings, 10 Speed, PS

1978 C7000, 175 Cat, 5+2, PS, 24' van body.

1985 Fiesta Mini Home with roof air.

1978 Chevrolet, 22' Coachman motor home, 34,310 miles with awning.

1979 Mercury Zephyr Station Wagon, V8, AT, PS, PB, Cruise, AM-FM, Cassette, CB, Loaded, \$2,795

1985 Ford LTD, LX, Loaded

1985 Aviator Conversion Van With Raised Roof, Loaded

35 TRUCKS AND TRAILERS

**USED TRUCKS**



'84 Ford E350 Cab & Chassis, AT, PS, PB, 460 Cu. In., 2 Tanks, 10,250 GVW, Only 69 Miles, Excellent Condition \$8,500



'85 Ford F250 Cargo Van, AT, PS, PB, AM/FM, 6 Cyl., 15,000 Mi. \$9,250



'84 Toyota Long Bed, 5 Speed, 4 Cyl., PS, PB, Bedliner, 11,000 miles \$6,150



'82 Chevy 3/4 Ton, Heavy Duty V8, 4 Speed, PS, PB, AM/FM Cassette, 2 Tone Paint, Excellent Condition \$6,250

**MARTIN'S AUTO SALES**

725 E. Main St., New Holland, PA 17557  
(717) 354-9967