

Livestock market and auction news



Virginia Auction Summary

Dec. 5-11
 Report supplied by VDA
 Total of Va. Weekly Feeder Cattle Auction Receipts: 9,115.
 Trend: Mixed from 3.00 higher to 2.00 lower.

South & Southwest Va.
 Nov. 28-Dec. 4

Report supplied by VDA
STEERS: Medium 1 300-500 lbs. 62.50-71.00; 500-700 lbs. 52.75-65.50, 700-1000 lbs. 50.50-59.00. Large 1 300-500 lbs. 60.50-71.00, 500-700 lbs. 56.00-64.00, 700-1000 lbs. 50.00-60.50. Small 1 300-500 lbs. 52.00-64.00, 500-700 lbs. 45.00-57.00, 700-1000 lbs. 47.00-52.00.

HEIFERS: Medium 1 300-500 lbs. 45.00-56.25, 500-700 lbs. 43.00-54.50, 700-900 lbs. 40.00-52.00. Large 1 300-500 lbs. 46.00-58.50, 500-700 lbs. 45.00-56.50, 700-900 lbs. 42.00-53.00. Small 1 300-500 lbs. 40.00-49.50, 500-700 lbs. 40.00-46.50, 700-900 lbs. 40.00-43.00.

Northern Va. Auction Summary
 Dec. 5-11

Report supplied by VDA
STEERS: Medium 1 300-500 lbs. 57.00-64.50, 500-700 lbs. 52.00-64.00, 700-1000 lbs. 50.00-59.50. Large 1 300-500 lbs. 64.00, 500-700 lbs. 58.00-

62.00, 700-1000 lbs. 54.50-57.50. Small 1 300-500 lbs. 53.50-62.50, 500-700 lbs. 51.00-60.10, 700-1000 lbs. 45.00-56.30.

HEIFERS: Medium 1 300-500 lbs. 43.00-52.50, 500-700 lbs. 42.50-55.50, 700-900 lbs. 39.50-48.50. Large 1 300-500 lbs. 47.50-53.00, 500-700 lbs. 46.00-52.50, 700-900 lbs. 45.50-49.50. Small 1 300-500 lbs. 40.00-48.00, 500-700 lbs. 41.00-49.50, 700-900 lbs. 38.00-39.00.

Four States Livestock

Hagerstown, Md.
 Wednesday, December 4

Report supplied by Auction
SLAUGHTER: Fed Steers-Steady. Low Choice 58.00-58.50; Good 53.00-57.00; Medium 47.00-52.00. Heifers- Choice 53.00-59.75; Good 45.00-52.00; Medium 40.00-44.00.

Cows- Large Run Steady Prices. High Yield 38.00-41.50; Average 33.00-37.00; Big Middle 28.00-32.00; Fatty Herf. 27.00-31.00; Shelly 29.00-down. Fat Bulls- Steady. Good 43.00-45.75; Medium 39.00-42.00. Veal Calves- Good Run Steady To \$2.00 Higher. Choice 85.00-92.00; Good 75.00-84.00;

Medium 65.00-74.00; Farm Hfrs. 54.00-59.00; Farm Bulls 82.00-99.00; Light Calves 46.00-54.00; Weak Calves 45.00-Down. Lambs- Good Run. Choice 67.00-68.00; Good 64.00-66.00; Medium 57.00-63.00.

STOCKER: **STEERS-** 300-550 lbs. Good Run \$1.00 Higher. Choice 57.00-61.50; Good 52.00-56.00; Medium 46.00-51.00; Culls 45.00-Down. Steers- 600-850 lbs. Choice 55.00-58.00; Good 50.00-54.00; Medium 49.00-Down. Heifers (All Weights)- Choice 48.00-52.00; Good 42.00-47.00; Medium 36.00-41.00. Bulls- Choice 51.00-54.50; Good 46.00-50.00; Medium 40.00-45.00. Springing Heifers- To \$750.00. Pigs, Hd. Steady Prices- 20-35 lbs. 12.00-26.00; 40-80 lbs. 27.00-37.00. Shoats By Lb. 37.00-40.00. Slaughter Hogs 50 cents Higher. 220-250 lbs. 44.50-45.50; 275-350 lb. 40.00-45.00.

Special Next Week Dec. 11, We Will Have 1 Polled Charolais Bull 1 Yr. Old; Also 6 Choice Charolais Steers Around 600 Pounds. There Were 292 Hogs Sold At The Hatfield Buying Station on Tuesday Morning. Hogs Are Received Here From 7 A.M. to 11 A.M. Top Price \$47.00.

Morrison Cove Livestock
 Martinsburg, Pa.
 December 9, 1985

Report supplied by auction

CATTLE 269. High Ch. & Pr. sl. steers 62.50-64.25, Choice 61.00-62.75, High Good & Low Ch. 60.00-61.50, Good 57.00-60.00, Good & Choice holsteins 44.00-48.50, Standard 41.00-43.75, Utility 32.50-40.00. Choice sl. heifers 61.50-62.75, Good 57.00-60.25, Standard 35.00-42.50, Utility 30.00-37.50, Breaking Ut. & Commercial sl. cows 36.50-39.25, Cutter & Boning Ut. 34.00-37.25, Canner & Low Cutter 30.00-33.75, Shells down to 25.00. Choice sl. bullocks NONE, Good 45.50-52.00, Standard 40.00-43.50, Utility 30.00-38.50. Yield Grade 1 1200-1700 lbs. sl. bulls, 43.50-46.25, Yield Grade 2 1200-1500 lbs. 39.00-42.75.

FEEDER CATTLE: Steers Good-48.50-56.00 Standard 37.50-44.00, Heifers Good 42.50-50.00 Standard 30.50-42.00, Bulls Good-44.50-53.00 Standard 32.50-42.50.

CALVES 304. High Ch. & Pr. 82.50-87.50, Choice 81.00-84.00, Good 65.00-74.00, Standard 50.00-63.00, Standard & Good 90 to 130 lb. 45.00-62.50, Utility 50-85 lbs. 30.00-46.50.

FARM CALVES: Holstein bulls 90-130 lbs. 67.50-97.00, Holstein heifers 90-130 lbs. 48.50-61.00.

HOGS 209: US No. 1-2 210-240 lbs.

barrows and gilts 47.50-49.00, No. 1-3 210-250 lbs. 46.50-47.75, No. 2-3 lbs. 41.00-45.00, No. 1-3 210-320 lbs. 37.00-41.00. Sows US No. 1-3 300-600 lbs. sows 38.00-40.50, No. 2-3 300-600 lbs. 33.50-37.50. Boars 29.00-30.50, Light weights 32.00-34.50.

FEEDER PIGS 128: US No. 1-3 35-50 lbs. feeder pigs 31.00-38.50 per head, No. 1-3 30-40 lbs. 26.50-30.50, No. 1-3 60-90 lbs. 35.00-41.00, Ut. 20-30 lbs. 10.00-19.50 per head.

SHEEP 23. High Ch. & Pr. 90-120 lbs. 65.00-71.00, Choice 80-90 lbs. 60.50-65.00 lbs., Good 80-90 lbs. 60.00-63.00. Slaughter ewes 14.50-28.50. 4 **GOATS** 13.50-39.50 per head.

Oklahoma National Stockyards

Wednesday, Dec. 11

Report Supplied by USDA

WEEKLY CATTLE TRENDS:

Feeder steers and heifers under 500# closing \$3.00-5.00 lower than last week; 500-600# weights 1.00-3.00 lower; over 600# 1.00-2.00 lower. Steers often showing the larger share of the downturn Slaughter cows steady to 1.00 lower. Slaughter bulls steady to 1.00 higher however undertone very weak late.

LIVESTOCK HAULING

Dependable Service
 6 Possum Bottom Tractors and Trailers
 Call Anytime

Vintage Sales Stables, Inc.
 L. Robert Frame Manager

Office 717-442-4181
 Office & Home: 215-458-5060
 Office & Home: 215-458-8518

SPECIAL NOTICE

Vintage Sales Stables, Inc.
 HOLIDAY SALES SCHEDULING

Will start on
 December 24, 1985 at 9 a.m.
 December 31, 1985 at 9 a.m.

NOTHING ACCEPTED AFTER 2 P.M.
 L. Robert Frame, Sr., President
 Glenn S. Frame, Manager
 717-442-4181
 215-458-8518
 717-442-4294

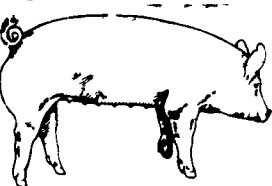


TED WALTZ



Livestock Hauling
 Local and Long Distance

111 Little Washington Rd. Call Evenings
 Downingtown, Pa. 19335 (215) 942-3324



EMERY'S BUYING STATION

OPEN TO RECEIVE
 YOUR MARKET HOGS

AT THE GREEN DRAGON MARKET
 RD 4, EPHRATA, PA 17522
 1 MILE NORTH OF EPHRATA
 ON NORTH STATE STREET.

HOURS: MONDAY, TUESDAY, and
 WEDNESDAY 6:00 A.M. to 11:30 A.M.
 215-458-5677 Residence
 717-733-9648 Office

YOU ARE PAID FOR YOUR
 HOGS IMMEDIATELY

Ken & Lois Emery, Proprietors

\$50 Per *

Round Turn Commission

All commodities plus stock indexes and bond futures. Full service. Call or write for our professional market letter. Specializing in commodities exclusively. * Volume discounts available.

800-322-9274 PA

800-523-9388 US

215-821-8111

Rosenthal & Co.

2200 Hamilton Street
 Allentown, PA 18104

LOOKING FOR MORE INCOME?

We are looking for farmers to build new farrow to feeder pig units and contract with us for guaranteed income



We Provide

- * Building Specifications
- * Sows
- * Feed
- * Vet Service and Medication
- * Complete Training in your new unit

All inquiries confidential. Send name, address, county and phone number to:

Lancaster Farming
 P.O. Box 366 - L-84
 Lititz, PA 17543

SWINE PRODUCTION SALES AND SERVICE

Complete Feeding Programs and Services

Feeding Programs to Meet Your Individual Needs

Computerized Record Keeping System

Providing Veterinarian Service



419 W. High Street
 Elizabethtown, PA
 17022

Supplying Farm Fresh Feeder Pigs

Marketing and Hedging Services

Marketing of Genesis Breeding Stock

Developing Individual Financial Programs

PA. Toll Free
 1-800-468-5524

Direct Dial
 (717) 367-1525

LEESPORT MARKET & AUCTION, INC.

North end of Leesport, PA Turn East off Route 61

"WHERE FRIENDS MEET"



BERKS COUNTY'S ONLY WEEKLY
 CATTLE & SWINE AUCTION —
 WEDNESDAY AT 1 P.M.

FARMER'S MARKET Every Wednesday,
 10 A.M. TO 9 P.M.



Garden Fresh Fruits & Vegetables - Bakery Fresh Cakes, Pies and Buns - Butcher Fresh Meats & Cheese - Sporting Goods - Clothing - Furniture - Jewelry - Used Items & Collectibles.
 PHONE: 215-926-1307
 LEROY WEIST & JOHN WEIST, MGRS.