

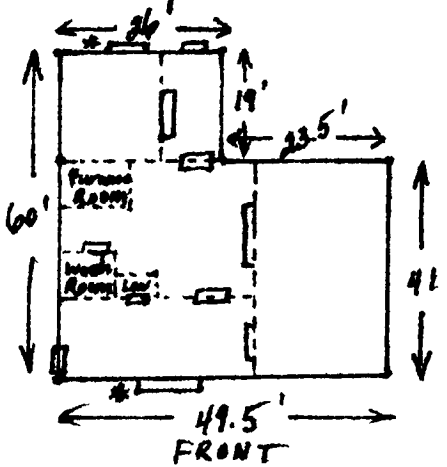
204 Acres
 Western Kent Co., DE. 120 tillable, frontage on three roads, possible assumption. Asking \$180,000.
Phillips Realty Co.
 1184 South Gov. Ave.
 Dover, DE 19901
302-734-7345

SHEETZ REAL ESTATE
RAY N. WILEY INC.
 323 W. Main St.
 Mount Joy, PA
CALL 653-1481
FARM LISTINGS NEEDED
 Farm Salesman - Eugene Kreider

FOR RENT
 40 acre farm,
 North of Manheim,
 Elizabethtown Rd.,
 w/barn and silo.
 717-299-4024
 or
 717-394-2902

Southern Huntingdon Co.
 Dairy farm, 175 acres w/150 acres tillable, large barn w/44 stanchions, 2 nice homes, stream & good spring on property. Many other extras. \$285,000
Colonial Real Estate Agency
814-447-5511

MODERN MULTI-PURPOSE BUILDING FOR SALE
 (Formerly Used as a Butcher Shop)
 Located near Dry Run, Franklin County, Pennsylvania (approximately 8 miles from Willow Hill Interchange of the Pennsylvania Turnpike).



* Loading Docks
 A 6.46-acre tract of land with 540 feet of frontage and easy access to the Pennsylvania Turnpike via Route 75. This 6.46-acre tract of land is improved with a 50'x60' modern building (floor plan diagramed above), a 4-bedroom frame dwelling, 2 hog finishing houses (40'x80' and 40'x60'), various other out-buildings, 2 wells, a 2,500-bushel Circle bin, a 10,000-bushel Reed bin, an 18-ton Broch bin, a 12-ton Broch bin, a 10-ton Broch bin, four 16-ton Circle bins and a bucket elevator.
PRICE REDUCED - ASKING \$75,000 - CONSIDERING ALL OFFERS!
 Will sell bins and/or the 50'x60' modern building separately.
 Must see this property to appreciate it.
 For additional information, contact **Valley Bank and Trust Company, P.O. Box 459, Chambersburg, PA 17201, Attention: Mike John** or call (717) 263-2265, extension 323 or 254.

NEW LISTING: Amish area of York Co. - 230 Acres of mostly Chester Loam Soil, 164 acres tillable, pond, stream, 4 BR frame house, (new) equipment shed, obsolete 30 cow bank barn w/large open pens, 2 silos 12x52. This tract has 3 deeds - easy to split for Amish!! High state of cultivation, call now.

ALL KINDS OF OPTIONS: 342 Acres nice dairy operation, 60 stalls, 20x70 Blue and 2 14x45 silos. Beautiful setting with 2 good streams in Bedford Co. Very large bank barn, pipeline, bulk tank, manure pit, large equipment shed, corn bins & very nice 3 BR tenant house. Main house is totally electric. 235 TA of the type of soil you will love to farm. Best of all owner quitting farming because of age & health, offers other options like turn key operation, full line of cattle and equipment or owner financing - will look at all options

15 ACRE FRUIT FARM: with over 550 ample trees plus grapes, pears, apricots. Beautiful 2 story brick house, bank barn & garage includes farm equipment. Stream & small woods, Adams County

33 ACRE (No Buildings) in Lancaster County - Bart Twp. 1 1/2 acres woods, 2 entrances from hard roads - will sub divide

120 ACRE CUMBERLAND CO. DAIRY FARM: Limestone soil with approx 100 TA. State road runs thru middle of farm w/nice length of field on both sides. Equipment shed, corn barn, 2 silos, extension built out front of bank barn, and double stone & brick house w/attached garage

97 ACRES OF GOOD RIVER BOTTOM SOIL: w/2 story framed tenant house & 2 story brick farm house, huge bank barn, milk house & corn barn, very special deal. Call today

MAHLON OBERHOLTZER
 R.E. Broker
 Smoketown - 717-392-1177

SOUTHERN CHESTER CO.
 60 acres, 40-50 tillable, large 85'x70' L-shaped barn in good condition, could be made to accommodate horses or cows. Large farmhouse, good well water and stone springhouse. Asking \$210,000.
Southern Chester Co. between Oxford and West Grove, PA.
215-869-9729

HUNTER COUNTY
 73.5 acres of rolling hills with 34 acres in fenced pasture, 14 acres in hayland and 24 acres in game abundant woodland. Includes one level frame cottage, large barn, old dairy barn, silo and utility buildings. Privately situated with beautiful mountain views and bold spring fed stream. Excellent for horses, cattle and/or sheep. Near Historic College Town of Lexington. \$89,000

BUFFALO CREEK FARM
 Charming 84 acre homestead 8 miles from Lexington. Seven room frame (partial log) house on a shaded setting. Good barn and other farm buildings provide outstanding 80 acres of fine pasture and 4 acres of woods. Bold Buffalo Creek babbling brook and nice spring. \$145,000

MACKEY'S LANE FARM
 290 acres of rolling fields and woods overlooking the Blue Ridge Mountains and surrounding farmland 3 miles south of Fairfield near I 81 and I 64. Attractive two story farmhouse plus fine farm facilities for efficient cattle, horse and/or sheep grazing and feeding operation. Excellent opportunity for alfalfa and/or other high quality hay/crop production. \$395,000

FREE AUTUMN CATALOG

G. OTIS MEAD III
 Accredited Farm & Land Broker
 Home 703/463 2740

MEAD ASSOCIATES
 Real Estate Services
 21 North Main Street, Lexington, Virginia 24450 Telephone 703/463-7168

JAMES Wm. MOORE
 Accredited Farm & Land Broker
 Home 703/463 7050



BERKS CO.
 • 140 Acre Farm features lovely 2 1/2 story stone home, modern kitchen, dining room, living room, center hall, 4 large bedrooms & bath, large bank barn, 2 large machinery sheds, small horse barn, large storage bins, gently rolling land with pond & stream, \$460,000
 76 Acres General Farm 2 1/2 story brick farmhouse, needs work, 2 story bank barn, double corn crib, large stream, private setting, \$150,000

SCHUYLKILL COUNTY
 • 234 acre woodland tract joins state gamelands, borders Rt 81 & secondary road, Pine Grove area, good hunting area, call for details \$175,000

OTHER FARMS AVAILABLE
 Please Call and Tell Us Your Preference
PAUL M. LONGACRE
 Rt. 100 Hereford, PA 18056
Ph: 215-679-5919

MONTGOMERY COUNTY
 • 82 acres, 65 till, balance woodland & pasture w/stream, general farm, 2 1/2 story 5 bedrm house/DR, Kitchen & bath, bank barn & other buildings. \$250,000 - \$235,000

TIOGA COUNTY
 • 410 Acre, 220 tillable Dairy Farm with lovely 2 story home, features good 46 stall dairy barn, pipeline, bulk tank, barn cleaner, 2nd house, new 45x72 machine shed, shop & heifer barn, 18x60 and 12x35 silos, pond, stream, good ground. \$325,000. Cattle & machinery available

• 800 Acre Dairy Farm, 400 T, 2 very good, lovely homes, 83 stall dairy barn, Steel pipe line, 1000 gal tank and barn cleaner, (2) 16x60 and (1) 14x40 silos with unloaders, Large heifer barn, \$365,000. Full line of machinery and cattle available

• 122 Acre 100 T dairy farm, 47 tie stalls with 24 free stalls, 800 gallon tank, barn cleaner, pipeline, milker, 20x60 concrete silo with unloader, good house with kitchen, dining room, 2 living rooms, 3 bedrooms and bath, \$110,000

• 126 Acre farm, 70 T, 45 pasture, balance wood land, Land only, Near above farm, \$65,000

SNYDER COUNTY
 • 186 acre dairy farm, 100 T, features modern 60 free stall barn w/milking parlor, 2 story heifer barn and large machinery shed, 20x60 and 20x70 Harvestore silos, lovely 2 story home with 3 bedrooms, kitchen, large living room/dining room, laundry and bath, \$210,000. Also full line of machinery available

POTTER COUNTY
 • 116 Acre hunting ground, 30 acres open, balance wooded, borders 2 roads & river, Possible Owner financing, \$50,000

BRADFORD COUNTY
 • 110 Acre dairy farm, 80 tillable, 35 stall dairy barn with dump station, barn cleaner, 400 gal tank, 18x55 silo and 14x60 silo with unloaders and 14x32 silo, heifer barn and out buildings, Large home with 5 bedrooms, kitchen, dining room, living room, laundry and 2 baths, \$150,000. Also cattle and machinery available under separate contract

• 5 acre Dairy Farm, Modern 74 stall dairy barn, Bulk tank, steel pipe line, barn cleaner, 20x32 Harvestore silo and 20x60 concrete silo, Manure storage, Modern Ranch home with 4BR's, Kit, DR, LR, Bath and Den, \$145,000. Also second house available

SUSQUEHANNA COUNTY
 • 265 Acre modern dairy farm w/2 houses, 115 comfort stall dairy barn with pipeline, milker, 2 large bulk tanks, barn cleaner, 3 large concrete silos, large free stall heifer & dry cow facility & large machinery shed, calf barn, lovely split level home features modern kit, formal DR, LR, family room, laundry, 2 baths, 4 BRs, Large in ground heated pool, 2nd 2 story home, modern kit, DR, LR, family room, 3 BRs, 1 1/2 baths. Also large new trailer, 200 Head of dairy cattle, modern line of machinery including several large tractors. All for \$600,000

• 565 Acre dairy farm, Features 145 stall barn, heifer barn, large machinery shed, 2 1/2 story house with kitchen, dining room, living room, office, family room, laundry, 3 bedrooms, 1 1/2 baths, 2nd House, Modern 3 bedroom with kitchen, dining room, living room and bath, Apartment with modern kitchen, living room, dining room, 3 bedrooms, 1 1/2 baths, 3rd House, New 2 bedroom, kitchen, living room and bath, \$750,000