

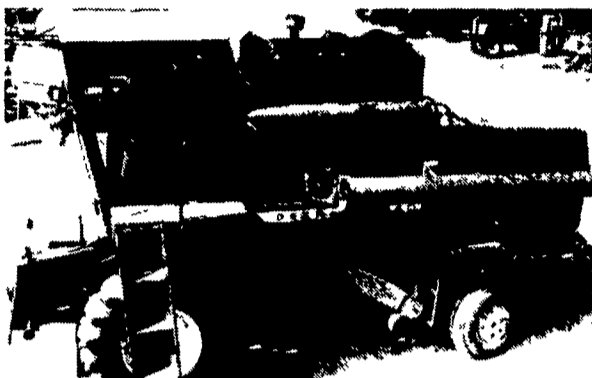
# YEAR-END INVENTORY PRICES

Take Advantage Of Year-End Tax Investment

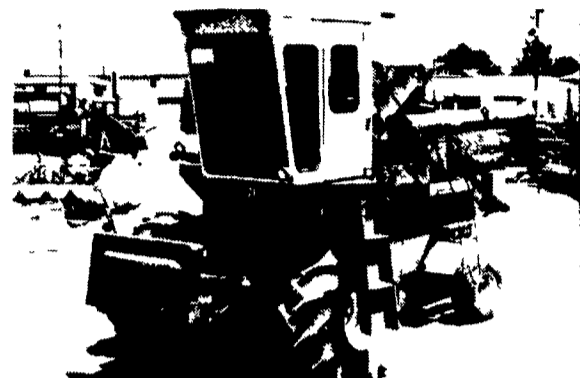
## USED COMBINES



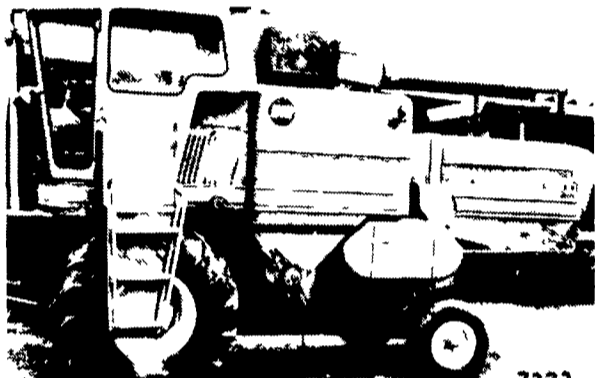
IH 1440D Hydro, Cab w/Air, 1979, 24.5x32 & 18.4x16.1 Tires, Auto Head Control, Monitor (U1241) ~~\$34,000~~ \$33,000 Save \$1,000



John Deere 4400 Diesel, 18.4x26, A/C, Straw Chopper (U9806)



IH 715 Diesel, Hydro, 18.4x26, Monitor (U7818) ~~\$12,500~~ \$8,750 Save \$3,750



Massey Ferguson 510 Diesel, Hydro, 23.1x26 w/63 Cornhead & 13' Platform. (U7222) ~~\$13,900~~ \$6,800 Save \$6,100

## USED COMBINES

- Gleaner G Diesel, Gear, Cab, w/630 Cornhead & 13' Platform (U1369) ~~\$15,000~~ \$12,200 Save \$2,800
- IH 1460, Diesel, Hydro, 24.5x23 10P & 11 00x16 Tires, Cab w/Air, Monitor, AHC (U9559) ~~\$39,000~~ \$34,000 Save \$5,000
- IH 1440 Diesel, Hydro, 28Lx16 10P & 11.00x16 Tires, Cab w/Air, Monitor, AHC (U9645) ~~\$39,500~~ \$34,000 Save \$5,500
- IH 203 Gas, Gear, Cab, 14.9x24 6P & 6.00x16 Tires, 2 Row Cornhead & 10' Platform (U1205) ~~\$3,800~~ \$3,200 Save \$600



New Idea Uni-Harvester, Model 705 Tractor, Diesel, Model 767 Super-Chopper, Model 768 Wide/Narrow 3 Row Head (U1285)

See Us At The

## MID-ATLANTIC NO TIL CONFERENCE

Wednesday, December 18, 1985

At The Maryland State Fairgrounds, Timonium, MD

See The Great Plains No Til Grain Drill On Display



## USED TRACTORS

- MF 175 Diesel, Gear w/Multi-Power, PTO (W1238)
- Versatile 160 w/Loader, Diesel, Hydro, 13.6x24 Tires, PTO, AC (W1364) ~~\$22,500~~ \$19,500
- Steiger Tiger-Turbo w/3 Pt. Quick Attach, AC, Gear, 13.5Lx32 Tires (W1372)
- Deere 8630 4-Wheel Drive, Diesel, Quad-Range, A/C, PTO, 3 Point Hitch, 20.8x38 Duals (W1333) ~~\$34,000~~ \$33,000 Save \$1,000
- Deutz DX-160 Diesel, Cab w/Air, 18.4x38 Duals (W9694) ~~\$25,000~~ \$18,900 Save \$6,100
- IH F1066D, 18.4x38 8P, Dual PTO, Gear (W1316) ~~\$12,500~~ \$11,700 Save \$800
- IH Farmall A w/Cultivators, Rear Wheel Weights 9x24 Tires (W1143)

- IH F1206 Diesel, Gear, 20.8x38 Tires, 120 HP, Cheap-Dependable Power (W8934) ~~\$9,000~~ \$7,000 Save \$2,000
- Deere 4840D, Powershift, 20.8x38 Duals, 1000 RPM PTO, Cab w/Air & Radio (W1180) ~~\$28,000~~ \$26,500 Save \$1,500
- IH F560 Diesel, Gear, 2 Point Hitch, Wide Front (W9623) ~~\$4,000~~ \$3,200 Save \$800
- Case 2390 Tractor, Like New Only 273 Hours, Powershift, 20.8x38 Duals PTO (W9997) ~~\$28,500~~ \$27,000 Save \$1,500
- IH Farmall H, Clean Tractor (W9625) ~~\$1,200~~ \$1,025 Save \$175
- IH F1066 D Gear, 135 HP, 18.4x38 Tires, Dual PTO, 3 Point Hitch, T/A, Sharp Tractor (W9599) ~~\$15,975~~ \$12,900 Save \$3,075
- Ford CL-20 Skid Loader, Gas 8.50x15 Tires, 45" Bucket (W1183)

- IH F1206D, New 18.4x38, Dual PTO, Extra Sharp Tractor (W9890) ~~\$6,500~~ \$7,500 Save \$1,000
- IH F1066D Hydro, 20.8x38 8 Ply Tires, Dual PTO (W1045) ~~\$12,200~~ \$10,500 Save \$1,700
- IH F1466D, 24.5x32 10P Tires, 11.00x16 8P, Dual PTO, (W1125) ~~\$13,500~~ \$12,400 Save \$1,100
- IH 3388 2+2 Tractor, 16.9x38 8 Ply Tires, Dual PTO, Full 4-Wheel Drive (W1109) ~~\$24,500~~ \$22,500 Save \$2,000
- IH F1566D Gear, Cab w/Air, 20.8x38 Duals, 165 HP, Cheap Power (W9921) ~~\$14,800~~ \$13,900 Save \$900
- IH F1466D Gear, 145 HP, 24.5x32 10P Tires, Aux. Fuel Tank, (W9236) ~~\$14,900~~ \$12,900 Save \$2,000
- IH F1066D Gear, 135 HP, 18.4x38 Tires, Dual PTO, T/A (W1058) ~~\$13,500~~ \$12,200 Save \$1,300

- IH F826D Hydro, COMPLETELY RECONDITIONED, 18.4x34 Tires, Dual PTO (W9743) ~~\$16,500~~ \$9,200 Save \$7,300
- IH F656 Gas, Gear, 3 Point, TA, PTO, (W9194) ~~\$9,500~~ \$4,900 Save \$4,600
- IH F1086D, ROPS, 20.8x38 8P Tires, Dual PTO, T/A, 145 HP, Excellent Tractor (W8729) ~~\$17,500~~ \$15,200 Save \$2,300
- IH Farmall 200 Gas, 11.2x36 Tires, Fast Hitch, PTO
- IH Farmall Super C w/Cultivator, 2 Row (W8569) ~~\$1,500~~ \$1,250 Save \$250
- MF 35 Gas, 13.6x28 Tires, PTO, Heavy Loader w/Down Pressure. (W1093) ~~\$5,400~~ \$4,300 Save \$1,100
- Steiger ST 300 Cougar III, Cat 3306 @ 300 HP, 30.5Lx32 Tires, Cab w/Air (W1273) ~~\$27,500~~
- Case 2290, Like New, Power Shift, PTO, 20.8x38 Tires (W1239) ~~\$22,500~~ \$21,500 Save \$1,000

## OTHER USED EQUIPMENT

- IH 550 Plow, 5f, 14" Spring Trip, (T9857)
- IH 710 Plow, 3F, 16, Auto Reset, Semi-Mount (T9916)
- IH 540 Plow, FF, 16" Spring Trip (T9725)
- Athens Model 156 Chisel Plow, 3 Point, 7', Depth-Gauge Wheels (T1284)
- IH 55 Chisel Plow, 13' Mounted, 3 Rank, 32" Shanks, Gauge Wheels (T9894)

- Krause Model 2416 Rockflex Disc, 26" Heavy Duty, 1 3/4" Arbor Bolts (T9020)
- Deere Model 210 Disc - 12' 9" Spacing, 20" Blades (T9074)
- IH 510 18x7, Grain Drill w/Fertilizer, DD Openers (V9905)

- Deere 8300 Grain Drill, 16 Double-Disc Openers, 10" Spacing, Press Wheels (U9922)
- IH 540 Manure Spreader, 160 Bushel, Hydraulic Endgate, 8.25x20 Tires (V9769)

- IH 595 Spreader, Hyd. Endgate, Dual Web, Upper Beater, Consignment (V9830)
- IH 7' Cycle-Bar Mower, 2 Pt. Hitch (U1305)
- Deere 110 Disc, 10' 9" Spacing (T8034)
- Bush Hog Disc - 10' 9" Disc Spacing - Front, 7 1/2' Rear, (T9109)
- Brillion STT-01 Spring Harrow - 16' (T9185)



Authorized  
UPS  
Station



Radio Ctr

(7