

Livestock market and auction news

Greencastle Livestock

Greencastle, Pa.
Monday, Dec. 2

CATTLE 473. **SLAUGHTER STEERS:** Choice & Prime 64.00 to 66.50, few to 67.10; Good & Choice 58.00 to 64.50; Good & Choice-Holstein 49.00 to 54.00; Standard & Good-Holstein 42.00 to 49.00.

SLAUGHTER HEIFERS: Choice 62.00 to 63.75, few to 65.25; Good & Choice 56.00 to 62.50; Standard & Good 48.00 to 56.00.

COWS: Utility & Commercial 35.00 to 38.50, few to 40.35; Cutter & Boning Utility 33.00 to 37.00, few to 38.50; Canner & Low Cutter 33.00 & down.

BULLS-ALL WEIGHTS: Yield Grade 1 46.00-50.00, few to 52.75; Yield Grade 2 41.00 to 46.00.

STOCKER CATTLE-ALL WEIGHTS: Steers-Medium & Good up to 62.00; Heifers-Medium & Good up to 52.00; Bulls-Medium & Good up to 54.00; Steers-

Holstein 37.00-43.00.

CALVES 428. Good & Choice-125 to 250 pounds 75.00-90.00, few to 101.00; Medium & Good-125 to 250 pounds 60.00-80.00; Medium & Good-80 to 120 pounds 50.00-58.00; Light & Cull-all weights 55.00 & down; Holstein Bulls-return to farm up to 100.00; Holstein Heifers-return to farm up to 55.00.

LAMBS, SHEEP & GOATS 43. Choice Lambs None offered; Medium & Good Lambs 58.00-64.00; Light & Cull Lambs 50.00-60.00; Sheep, Ewes & Bucks up to 24.00; Goats-all sizes (by head) 12.00-47.00.

HOGS 112. No. 1-3 Butcher Hogs-190-225 pounds 47.00; No. 1-3 Butcher Hogs-225-250 pounds 47.50; No. 1-3 Butcher Hogs-250-300 pounds 45.75; Good Butcher Sows-400 pounds down 37.00 to 41.00; Good Butcher Sows-400 pounds up 38.00 to 41.00; Heavy Boars-over 300 pounds 31.00; Pigs-all sizes (by head) 10.00-34.00.

Sale every Monday evening at 5:00 p.m.
Hay & straw sale every Monday at 1:00 p.m.

New Wilmington Livestock

New Wilmington, Pa.
December 2, 1985

Report supplied by PDA

CATTLE 214: (PDA) Slaughter cows steady. Few Good slaughter steers 55.00-60.25, Few Standard 50.00-53.50. Choice slaughter heifers at 61.25, Good 52.25-56.75, Standard 42.00-50.00, Utility 35.00-41.50. Breaking Utility & Commercial slaughter cows 35.00-38.50, Couple to 39.25 and 39.50, Cutter & Boning Utility 32.00-36.25, Canner & Low Cutter 25.00-32.75, Shells down to 20.00. Few Yield Grade No. 1 1455-1675 lbs. slaughter bulls, 44.75-46.00, Few Yield Grade No. 2 1105-1430 lbs. 40.00-42.00.

FEEDER CATTLE: Steers Medium & Large Frame #1 440-665 lbs. 49.75-54.00; Heifers Medium frame #1 365-680 lbs. 40.00-47.00,

Few Medium Frame and Large Frame #2 470-775 lbs. 31.50-38.50.

CALVES 233: Vealers steady to \$5.00 higher. Few Choice 86.00-92.00, Few Good 68.00-71.00, Standard & Good 90-110 lbs. 43.00-51.00, 65-85 lbs. 30.00-46.00, Utility 50-75 lbs. 10.00-27.50.

FARM CALVES: Holstein bulls 90-135 lbs. 60.00-92.00, Holstein heifers 100-120 lbs. 49.00-55.00.

HOGS 274: Barrows & gilts \$2.00-2.50 higher. US No. 1-2 220-245 lbs. barrows & gilts 46.35-47.35, one lot at 48.00, No. 2-3 220-250 lbs. 45.25-46.60, One Lot No. 2-4 220 lbs. at 44.85, One Lot 3-4 275 lbs. at 43.00. Sows about steady. US No. 1-3 300-500 lbs. 35.00-40.00, few No. 2-3 360-520 lbs. 31.00-34.00. Boars 30-34.25.

FEEDER PIGS 8: US No. 1-3 30-45 lbs. feeder pigs 17.00-30.00 per head.

SHEEP 75: Choice & Prime 75-100 lbs. 65.00-72.00, Good & Choice 60-85 lbs. feeder lambs 67.00-75.50. Few Slaughter ewes 12.00-18.00.

Penns Valley Livestock

Centre Hall, Pa.
Tuesday, Dec. 3

Report supplied by Auction
Beef Cows: Utility and Commercial 38.10-40.85; Cutters 34.50-38.00; Canners 31.50-34.75; Shells 28.00.

Heifers: Standard 44.50-48.10; Commercial 38.75-42.00.

Steers: Good 52.50-56.35; Standard 42.00-48.60.

Bulls: Good 44.10-45.85; Standard 42.50-43.50.

Veal Calves: Choice 63.00-75.00; Good 53.00-62.00; Standard 43.00-51.00; Utility 38.00-42.00.

Farm Calves: Bulls 75.00-92.00. Sows: 37.75-39.00.

Shoats: 25-30 lbs. per head 14.00-21.00; 30-35 lbs. per head 23.00-28.00; 35-50 lbs. per head 31.00-40.00.

Lambs: 58.00-68.00.
Goats per head: 10.00-32.00.

Green Dragon Livestock Sales

Location: Ephrata RD 4. 1 mile N. on North State St., Ephrata.



COWS COWS COWS SALE EVERY FRIDAY

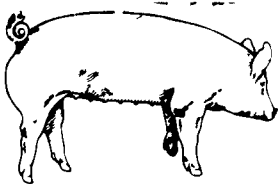
Lots of good Northern Feeder & Stockers. Slaughter Cows - Bull Steer, Veal-lamb.

11:00 A.M.-Beef Sale 200-300 each week.
1:00 P.M.-Dairy Sale.
7:00 P.M.-Small Animal Sale.

For Special Sales and Herd Dispersals on farm or at our barn or other market information call: Office 717-733-2444, Home 717-838-4318.

WALTER H. RISSER, Proprietor

All out of state and new buyers must have cash or certified check or current letter of credit from bank.



EMERY'S BUYING STATION

OPEN TO RECEIVE YOUR MARKET HOGS

AT THE GREEN DRAGON MARKET
RD 4, EPHRATA, PA 17522
1 MILE NORTH OF EPHRATA
ON NORTH STATE STREET.

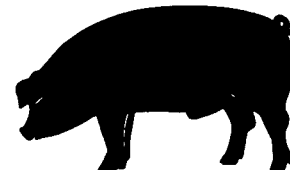
HOURS: MONDAY, TUESDAY, and WEDNESDAY 6:00 A.M. to 11:30 A.M.
215-458-5677 Residence
717-733-9648 Office

YOU ARE PAID FOR YOUR HOGS IMMEDIATELY

Ken & Lois Emery, Proprietors



GWALTNEY of SMITHFIELD, LTD.



We will be receiving hogs at Vintage Sales Stables in Paradise, Pa. Mondays, Wednesdays, Thursdays & Fridays from 7 a.m. to 12 noon
717-442-4742

ATTENTION YORK COUNTY HOG PRODUCERS

We will be receiving hogs at Thomasville, Pa. Tuesdays 7 a.m. to 12 noon
Futures forward contracts are available. No commission, paid promptly.
York County - **717-792-9836**

KING'S AUCTION, KIRKWOOD

Hay, Straw and Grain Auction
EVERY TUESDAY 12:00

Located Rt. 472 5 miles south of Quarryville or 6 miles north of Oxford at Shaub's Auction House

Lloyd H. Kraider
Auctioneer
AU-000513L

No out of state checks
ALL TRUCKERS AND FARMERS WELCOME

HAY & STRAW SALE

12:00 Noon
Every Wednesday
Westend of Avondale at the intersection of Baltimore Pike and Route 41.

Harvey Z. Martin
215-268-3604 (Office)
215-445-5303 (Residence)

MELHORN SALES, SERVICE, TRUCKING CO.

1010 W. Main St., Mount Joy, PA 17552

The only full service company, in this area, to handle the total needs of the poultrymen.

Which Includes:

- DEKALB chicks & started pullets sold by Clay Mumma, Nelson Groff & Harold Mishler.
- Complete loading & unloading of pullets & spent hens.
- New modern dollie equipment to move your pullets fast and efficiently with minimum stress to the pullets

Place Your Confidence In A Full Service Company That Wants To Be Worthy Of Your Business

For More Information Phone:
717-653-1102 or 717-653-2787

Monday - Friday 8 A.M. - 4 P.M. ask for Lynn or Wendy



*50 Per

Round Turn Commission

All commodities plus stock indexes and bond futures. Full service. Call or write for our professional market letter. Specializing in commodities exclusively. * Volume discounts available.

800-322-9274
PA

800-523-9388
US

215-821-8111

Rosenthal

& Co.

2200 Hamilton Street
Allentown, PA 18104