

Livestock market and auction news

Central U.S. Carlot

Beef Report
Wednesday, Dec. 4

Report supplied by USDA
Central U.S. Carlot Beef Report
Includes The Major Production
Areas In The Midwest, Texas, And
Oklahoma. As Of 4:00 P.M.

Compared to Tuesday's 4:00
P.M. report, steer and heifer
carcasses stay in a limited test.
Demand very light. Movement
light early, however, afternoon
trading at a near standstill with
packers holding at steady levels
while buyers taking a bearish wait-
and-see attitude. Choice 3 supplies
more than ample while goods and
yield grade 4 supplies light.

The gross boxed beef carcass
cutout value declined \$.58 to an
estimated \$104.71 per cwt, 174
loads boxed cuts reported.

Sales reported on 31 loads of
steer and heifer carcasses.

Steer Beef
16 Loads

FOB Omaha Basis
Choice 3 600-900 lbs. 103.00,

steady.

Good 2 & Low 3 600-700 lbs. 98.00.
Choice 2-3 600-900 lbs. 91.50 (Hols
Type).

Good 2-3 600-900 lbs. 86.50 (Hols
Type).

FOB Amarillo Basis
Choice 4 600-900 lbs. 90.00.

Heifer Beef
15 Loads

FOB Omaha Basis
Choice 3 550-700 lbs. 101.00
steady.

Good 2 & Low 3 600-700 lbs. 96.00.

FOB Amarillo Basis
Choice 4 500-700 lbs. 90.00.

Steer & Heifer
Primal Cuts

2 Loads
Hinds 120-170 lbs. 110.00-111.00.

Cow Beef
23 Load

Midwest: Prices \$2.00-4.00
higher, mostly \$2.00 higher late.

Eastern Texas and Oklahoma:
Prices steady to \$1.00 higher than
Tuesday.

Sales in the Midwest Production
Area:

FOB Omaha Basis
Bng Utility 1-3 400/up lbs. 65.00-

66.00 load 62.50 late.

Cutter 1-2 350/up lbs. 68.00-70.00
late 68.00-69.00.

Sales in Eastern Texas and
Oklahoma Production Areas:
Bng Utility 1-3 400&up lbs. FOB
Plant 68.00-69.00, Delivered Plant
69.00-70.50.

Cutter 1-2 350&up lbs. FOB Plant
72.50-73.50, Delivered Plant 73.50-
74.50.

**Boneless Processing Beef/
Beef Trimmings**
82 Loads

90% Chem Lean Fresh 98.00-
99.00.

90% Chem Lean Frozen 100.00.

50% Chem Lean Fresh 46.00-
46.50, Bulk 46.00.

**Eastern Texas and
Oklahoma**
Production Areas

90% Chem Lean Fresh FOB
Plant 101.00-102.00.

90% Chem Lean Frozen FOB

Plant 102.00.

85% Chem Lean Fresh FOB
Plant 95.00.

50% Chem Lean Fresh FOB
Plant 46.00-47.00.

East Coast Carlot

December 4, 1985

Report supplied by USDA
East Coast Carlot meat trade
delivered prices (caf) Boston to
Washington area include.

Compared to Tuesday's close:
Trading fairly active for veal.
Special fed veal 1.00 to 5.00 higher.
Good and choice boning veal 2.00
higher; inshipped untested.
Carcass lamb unestablished with a
steady to weak undertone. Com-
pared to last week beef 1.00 to 2.00
higher, beef trimmings steady.

Veal Carcass

Choice & Prime
(Special Fed)

Hide On 200 Head
220-280 lbs. 175.00-176.00 few
178.00, 1.00-5.00 higher.

Good and Choice

Boning Type
Hide On

**NORTHEASTERN SUP-
PLIERS:** 1000 head; 65-75 lbs.
78.00-80.00, 2.00 higher; 55-64 lbs.
76.00-78.00; 45-54 lbs. 74.00-76.00;
35-44 lbs. 72.00-74.00; 34 lbs. down
70.00-72.00.

Inshipped Untested.

Boneless Beef

2 Loads (U.S. and Canadian origin)
compared to last week

90% Chem Lean, fresh 104.00,
1.00-2.00 higher.

Beef Trimmings

1 Load

50% Chem Lean, fresh 50.00,
steady.

EVERGREEN TRACTOR CO., INC.

TRACTORS:

- JD 4020 WF, dual outlets, new short block \$8,350
- JD 3020 power shift diesel \$8,250
- JD 2840, roll guard, sharp \$10,750
- JD Model B Hi-Crops \$1,250 Each
- JD 1530D Tractor \$8,750
- JD 4230 Quad, Sound Guard \$17,500
- (1) White 2-105 w/Roll Guard Make Offer
- IH 240 w/Fast Hitch and 2B Plow \$2,150
- White 2-60 4WD w/Loader Make Offer
- MF 30B Industrial \$10,950
- Oliver 1255 4WD Tractor w/Loader \$6,950
- JD 4640 Tractor, P S 840 Hrs \$32,500
- JD 730 Dsl Tractor, Roll-A-Matic, 3 pt, new engine \$3,850

TILLAGE:

- JD 225 10' Offset Disc \$2,850
- Dunham 14' Packer \$775
- JD 2500 5x18" Spring Reset Plow \$2,850
- JD 13x16" Plow, 3 Pt \$675
- Oliver #565 4-15 Semi-Mounted Plow \$1,450
- JD BWF 18' Wing Disc \$2,650
- Brady 30' Field Cultivator \$5,450
- JD F145 6x16 Plow \$1,850
- JD F350 5x16 Plow \$2,450
- Brady 12 1/2' Field Cultivator \$1,750
- IH 320, 10' Disc, 2 yrs old \$1,250

GRAIN DRYERS:

New Farm Fans ABB Auto-Batch Dryer. MUST MOVE CALL FOR PRICE (Dealer Inquiries Welcome)

HAY MACHINES:

- JD 1209 Mower Conditioner w/Stub Guards \$3,850
- JD 480 Mower Conditions \$1,850
- JD 410 Round Baler, Sharp \$4,350
- NH 469 Mower Conditioner \$2,650
- JD 14T Baler \$750
- NH 479 Haybine \$3,850
- Hesston Hydro-Swing Mower Conditioner \$2,750

PLANTERS & GRAIN DRILLS:

- JD 20x6 Model B Plain Grain with Grass D.D. \$2,350
- JD 8300 Bean Drill \$4,500
- JD 7000 6 Row Planter \$6,350
- JD 8 Row 7000 30" Planter
- JD 490 4 row Planter \$375
- IH Model 620 12' Press Wheel Drill, like new \$4,850

HARVESTERS & FORAGE EQUIPMENT:

- Fox Model 2000 Harvester w/2 Row Narrow & PU \$2,600
- NH Super 717 Harvester \$2,450
- NH P.U. Attachment \$575
- (2) JD 5 1/2' Pickup Attachment
- JD 5400 4 WD Harvester 3 Row 30" Row Crop & 7' Pickup
- NI 2 R Narrow Model 325 Pull Type Picker w/Grinder, like new \$4,500
- (1) John Deere 34 w/One Row Row Crop \$1,590 \$950
- (1) John Deere Three Row Row Crop Attachment, New Belts \$3,850

MISCELLANEOUS:

- 18 4x38 Direct Axle Dual Wheels
- 14 9x38 Direct Axle Dual Wheels
- 20 8x34 Direct Axle Dual Wheels
- Papec #880 Grinder Mixer w/Molasses Attach - Sharp \$3,950
- IH 850 Grinder Mixer \$1,450
- JD 6 Row 30" Rear Cultivator \$1,250
- 14 9x26 T-rail duals
- 20 8x34 direct axle, less rubber
- NH 679 tandem axle spreader, hyd endgate \$3,850
- NI Tandem Axle Spreader \$3,850
- Better Bilt 1500 Gallon Tank Spreader \$3,450
- NH #90 Bale Mover
- JD 534 Front Dozer Blade \$2,450
- JD 146 Loader ~~SOLD~~ \$2,650

COMBINES & PICKERS:

- NI 2RW, pull picker, nice, model 311 \$2,350
- 6600 Combine, new gas engine \$6,950
- JD 443 4 row 30" corn head
- NI 709 Uni System, hydro w/power rear assist 818 combine 4R narrow head & 13' flex head Price on Request
- Sharp
- JD 6620 Side Hill Turbo Hydro w/15' Flex Head Price on Request
- JD 6600 Side Hill Hydro w/15' Flex Head \$3,300
- JD 3300 Dsl. w/Cab, 343 C H & Rotary Screen Price on Request
- #643 6 Row 30" Corn Head
- #244 2 Row Corn Head

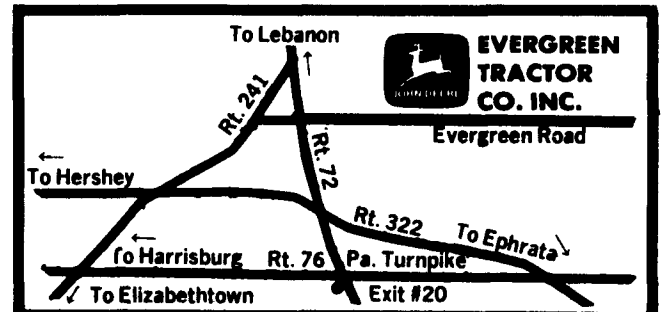
NEW JOHN DEERE EQUIPMENT AT GENERIC PRICES

- (1) JD 2700 5-18" Plow with Cover Boards and Coulters, Cash Price \$8,600

SPECIAL FOR RENT
NEW JD 330
ROUND BALER

Coming in ...

- NH 790 Tandem Axle Spreader
- JD 4400 Diesel Hi-Backseat Sharp
- F145 4x16" Plow



30 Evergreen Rd., Lebanon, PA., (717) 272-4641 or Toll Free 1-800-441-4450 Ext. #6

NOTICE

H.D. Pegram Tobacco Company

We are paying top dollar for 609 Type tobacco. Call us for an appointment or any questions you may have.

Office: 215-445-7667

Sales: Henry Eby 215-445-4342

Aaron Hoover 717-354-8232

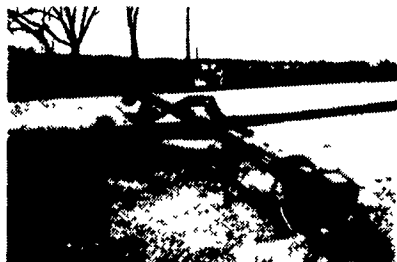


Livestock Systems

NEW EQUIPMENT SPECIALS MANURE HANDLING EQUIPMENT



BUTLER 3300 gal. Tank-R Super Mix, rear discharge, level indicator
\$11,850



BUTLER 24' Prop. Agitator (demo unit) 3 blade prop.
\$3,900

Super Silo Unloader & Renew Kit Specials

1 Only - 16' Lineshaft Drive, Volumaster Unloader \$3,900

26' Lineshaft Drive, Volumaster Unloader \$4,290

1 Only - 24' VIII Volumatic-Unloader \$5,900

Renew Kits From Butler/Jamesway VII and VIII Unloaders. From \$2,500



Sollenberger Silos Corp.

A Nitterhouse Company
Box N Chambersburg, PA 17201 [717] 264-9588
A Producer of Quality Concrete Products Since 1923