



Livestock market and auction news

Virginia Auction Summary

Nov. 21-27
Report supplied by VDA
Total of Va. Weekly Feeder Cattle Auction Receipts: 8,015.
Trend: Unevenly steady.
South & Southwest Va.
Nov. 21-27

Report supplied by VDA
STEERS: Medium 1 300-500 lbs. 60.00-72.50; 500-700 lbs. 54.00-65.00, 700-1000 lbs. 50.00-58.00. Large 1 300-500 lbs. 56.25-69.00, 500-700 lbs. 56.00-66.50, 700-1000 lbs. 54.00-57.00. Small 1 300-500 lbs. 52.00-65.00, 500-700 lbs. 50.00-60.00, 700-1000 lbs. 45.00-52.00.

HEIFERS: Medium 1 300-500 lbs. 52.00-62.00, 500-700 lbs. 43.50-55.00, 700-900 lbs. 40.00-48.00. Large 1 300-500 lbs. 46.00-58.50, 500-700 lbs. 44.50-55.00, 700-900 lbs. 45.00-48.50. Small 1 300-500 lbs. 42.00-53.00, 500-700 lbs. 40.00-50.00, 700-900 lbs. 39.00-43.50.

Northern Va. Auction Summary

Nov. 21-27
Report supplied by VDA
STEERS: Medium 1 300-500 lbs. 58.50-69.50, 500-700 lbs. 55.00-65.25, 700-1000 lbs. 51.50-62.75. Large 1 300-500 lbs. 58.50-66.00, 500-700 lbs. 55.00-63.00, 700-1000 lbs. 53.75-56.50. Small 1 300-500 lbs. 53.00-63.00, 500-700 lbs. 50.50-62.00, 700-1000 lbs. 48.25-54.50.

HEIFERS: Medium 1 300-500 lbs. 45.50-55.50, 500-700 lbs. 44.00-53.50, 700-900 lbs. 46.00-50.75. Large 1 300-500 lbs. 49.50-53.00, 500-700 lbs. 45.00-55.50, 700-900 lbs. 46.00-48.00. Small 1 300-500 lbs. 42.00-49.00, 500-700 lbs. 40.00-49.50.

Shenandoah Valley Livestock

Harrisonburg, Va.
Saturday, November 23
Report supplied by auction
FEEDER CATTLE: Trend- Mostly Steady. STEERS: M&L-1 300-500 lbs. 59.00-66.00, Few @

68.00, 500-700 lbs. 58.00-63.00, 700-1000 lbs. 54.00-58.50. S-L&M&L-2 300-500 lbs. 56.50-62.50, 500-700 lbs. 52.00-62.00, 700-1000 lbs. 52.75-56.50. FEEDER BULLS: Too Few For Trend. M&L-1 500-700 lbs. 47.00-57.50.

HEIFERS: Steady To 2.00 Higher. M&L-1 300-500 lbs. 47.00-52.75, 500-700 lbs. 45.50-52.50, 700-800 lbs. 46.00-48.00. S-L&M&L-2 300-500 lbs. 42.00-47.00, 500-700 lbs. 42.00-50.00, 700-800 lbs. 45.00-45.50.

SLAUGHTER COWS: Utility & Commercial 2-4 28.50-35.75; Canner & Cutters 1-3 25.00-31.50.

SLAUGHTER BULLS: 40.50-44.50, Hi. Ch. & Pr. 40.00 lower-Feeders \$3.50 higher.

LAMBS: Trend- Choice \$1.00 Higher. Blue O. High Choice & Prime 72.50. Red O. Choice 72.00; Feeder Lambs Choice 80.00; Slaughter Ewes 14.00-24.25.

HOGS: US 1-3 200-240 lbs. Hogs bought for Home Slaughters 310#-395# \$38-43; Sows 1-3 31.50-44.00; Boars 25.00.

VEAL: Choice & Prime Few 75.50-80.00; Good Few 60.00-64.00.

Four States Livestock

Hagerstown, Md.
Wednesday, November 20
Report supplied by Auction

SLAUGHTER: Fed Steers- Steady. Good 57.00-58.00; Good 52.00-56.00; Medium 51.00-Down. Heifers- Choice 48.00-50.00; Good 43.00-47.00; Medium 42.00-Down.

Cows- \$1.00 Lower. High Yield 36.50-38.75; Average 33.00-36.00; Big Middle 29.00-32.00; Fatty Herf. 28.00-31.00; Shelly 30.00-Down. Fat Bulls- \$1.00 Lower. Medium 39.00-42.50. Veal Calves- No Choice Offered, Steady Prices. Farm Bulls \$10.00 To \$15.00 Higher; Good 60.00-66.00; Medium 55.00-59.00; Farm Bulls 90.00-105.00; Light Calves 50.00-57.00; Weak Calves 49.00-Down. Lambs- Few Offered. Good 63.00-65.00; Medium 58.00-62.00. Bulls- Choice 55.00-59.50; Good 51.00-54.00; Medium 46.00-50.00.

STOCK CATTLE: 5. Steers- 300-550 lbs. \$1.50 Lower. Few Light Weights. Choice 62.00-66.00; Choice 59.00-61.50; Good 53.00-58.00; Medium 48.00-52.00; Culls 47.00-Down. Steers- 600-850 lbs. Choice 57.00-60.00; Good 52.00-56.00; Medium 51.00-Down. Heifers- (All Weights) Choice 51.00-55.00; Good 44.00-50.00; Medium 38.00-43.00.

Springing Heifers To \$610.00.

Pigs, Hd \$2.00 Lower. 20-35 lbs. 16.00-25.00; 40-60 lbs. 26.00-41.00. Shoats By Lb. 38.00-40.50. Slaughter Hogs- \$1.00 Lower. 220-235 lbs. 43.00-43.50; 270-350 lbs. 40.00-43.50; 400-500 lbs. 35.00-39.50. Sows- Steady. 350-650 lb. 37.00-41.00.

Penns Valley Livestock

Centre Hall, Pa.
Tuesday, November 26
Report supplied by Auction

Beef Cows: Utility and Commercial 37.35-39.25; Cutters 34.10-36.85; Canners 31.00-33.85; Shells 26.00.

Heifers: Commercial 40.00-42.85.

Steers: Choice 60.35-63.25; Standard 42.50-46.50.

Bulls: Good 47.25-49.35; Standard 44.00-45.85.

Feeder Cattle: 300-500 lbs. large frame 42.00-48.00; 300-500 lbs. small frame 40.00-45.00; 500-700 lbs. large frame 43.00-47.00; 500-700 lbs. small frame 40.00-46.00.

Veal Calves: Choice 70.00-81.00; Good 54.00-69.00; Standard 47.00-52.00; Utility 40.00-46.00.

Farm Calves: Bulls 85.00-102.00; Heifers 60.00-68.00.

Hogs 45.50-50.00.
Sows: 36.50-40.75.
Boars: 28.75-31.50.

DEALERS WANTED

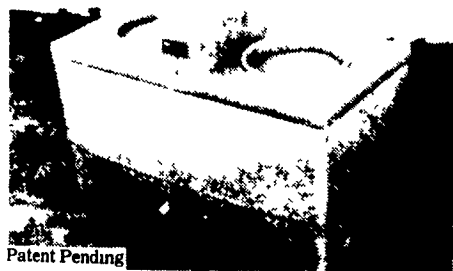
WHOLE COTTON SEED AND PEANUT HULLS

NAAMAN EBERLY
Paradise, PA
717-687-0990
717-299-3001

DEALERS WANTED

Lapp ENERGY FREE DRINKERS

No Gas/No Electric



40 Gallon

Drinkers have a new unique baffled drinking design manufactured from a durable poly product. A 2-hole 40 gallon and a 1-hole 4 gallon for all kinds of livestock, including horses, sheep, pigs, etc.

Manufactured By

SOUDESBURG MFG.

116 N. Soudersburg Rd., Gordonville, PA 17529

Authorized Dealers

LANCASTER CO. REISTSVILLE AREA

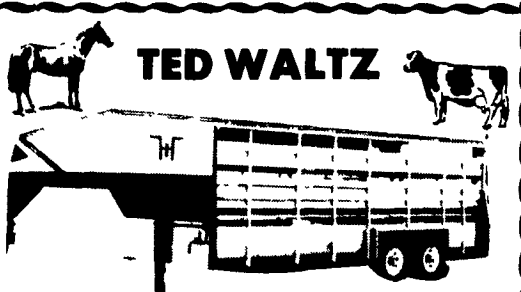
SHOW-EASE STALL CO. LAPPS

573 Willow Rd. SHARPENING SERVICE

Lancaster, PA 17601 RD 2

(717) 299-2536 Myerstown, PA 17067

Dealer Inquiries Invited



TED WALTZ

Livestock Hauling Local and Long Distance

111 Little Washington Rd. Call Evenings
Downingtown, Pa. 19335 (215) 942-3324

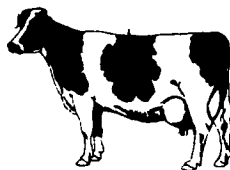
TOP PRICES FOR DOWN, CRIPPLED AND AS IS COWS, BULLS & STEERS

Slaughtered Under Federal Inspection
Paid On Dressed Weight

Tom Mulvaney
Livestock Trucking
(201) 454-4247

HANDLING: Warren, Hunterdon, Sussex And Somerset Counties, New Jersey

IN PENNA: Northampton, Bucks And Lehigh Counties



CRIPPLED AND DISABLED

Cows, Steers & Bulls For Slaughter Under USDA Inspection

Call Wayne Taylor
717-866-6289
215-286-9400

Lebanon, Berks, Lancaster & Chester Counties

ATTENTION MR. FARMER

Dwight Rouse Tobacco Co., Inc. is proud to announce the opening of our New Receiving Station for the purchase of 609 Tobacco.

We invite all farmers to stop in and see our facilities located on Highway 472, Kirkwood, Pa.

We will begin receiving tobacco on Decmeber 2, 1985.

Contact

Dwight or Dean Rouse
at 717/529-2626
for more information

SWINE PRODUCTION SALES AND SERVICE

Complete Feeding Programs and Services

Feeding Programs to Meet Your Individual Needs

Computerized Record Keeping System

Providing Veterinarian Service

PA. Toll Free
1-800-468-5524



419 W. High Street
Elizabethtown, PA
17022

Supplying Farm Fresh Feeder Pigs

Marketing and Hedging Services

Marketing of Genesis Breeding Stock

Developing Individual Financial Programs

Direct Dial
(717) 367-1525