

Livestock market and auction news

Eighty-Four Livestock

Eighty-Four, Pa.
Monday, Nov. 25
Report supplied by PDA
CATTLE 461. Compared with last Monday's market: Slaughter cows \$1-\$1.50 higher instances \$2...One Choice slaughter steer at \$9.25, few Good 52.00-56, Standard 45.50-50, Utility 39.00-44...Standard slaughter heifers 41.00-46, Utility 35.50-41...Breaking Utility and Commercial slaughter cows 34-37.50, few to 38.50, Cutter & Boning Utility 31.25-35, Canner & Low Cutter 25.00-32, Shells down to 18.00. Yield Grade No. 1 1200-1900 lbs. slaughter bulls 43.50-48.90, #2 1000-1700 lbs. 39.00-41.
FEEDER CATTLE. Medium & Large Frame #1 325-550 lbs. steers 55-65.50, Medium #1 500-800 lbs. 50.00-54...Medium & Large Frame #1 300-600 lbs. heifers 44.50-50...Medium Frame #1 4-600 lbs. bulls 45.00-55, few #2 6-750 lbs. 40.00-44.00.

CALVES 283...Few Choice vealers 78.00-82.00, Good 63.00-73, Standard & Good 90-120 lbs. 50.00-57, 60-85 lbs. 46.00-53, few Utility 50-90 lbs. 30.00-38...FARM CALVES: Holstein Bulls 90-120 lbs. 67.00-101...Good and Choice 250-350 lbs. slaughter calves 45.00-50.00.

HOGS 114...Barrows and gilts 50 cents lower...Few US No. 1-2 220-230 lbs. barrows and gilts 43.50-44, No. 2-3 2-240 lbs. 42.75-43.50, few No. 2-4 215-269 lbs. 42-42.50, few No. 1-3 158 lbs. at 37.00...US No. 1-3 3-550 lbs. sows 38.00-39, No. 2-3 370-695 lbs. 35-37.75...Boars 28-32.00.

FEEDER PIGS 10...Few US No. 1-3 35-55 lbs. feeder pigs 21.00-23 per head.

SHEEP 117...Wooled slaughter lambs \$2-\$3 lower...High Choice & Prime 75-85 lbs. woolled lambs 70.25-73.50, Choice 80-90 lbs. 67.00-69, few Good 85-90 lbs. 65.00-67.50; Good & Choice 50-70 lbs. feeder lambs 60.00-73...Slaughter sheep 22.00-24.00...GOATS 9: 14.00-27 per head.

Omaha Weekly

Wednesday, Nov. 27
Report supplied by USDA

Slaughter steers and heifers ranged steady to 50 cents higher this week, compared to last week's close. Advances were confined to Monday's market as prices adjusted to the direct trade upturn of the previous week. Buyer demand, which had been good early in the week deteriorated somewhat at midsession, causing some erosion in Monday's gains. The non-slaughter Thanksgiving holiday was generally blamed for the decreased midweek demand. Overall finish continued attractive. Slaughter Cows and Bulls steady.

Estimated 4 day receipts this holiday shortened 6000; actuals last week 6,638, last year 10,423. Steers comprised 45 percent of the weeks receipts; Heifers 41 pct., Feeders 6 pct., Cows 7 pct.

SLAUGHTER STEERS: At the

close, choice 2-4 1100-1300 lbs. 64.75-66.00. Mixed Good and Choice 2-3 1050-1250 lbs. 63.50-65.00. Few Good 82.00-83.50. Couple packages mixed Good and Choice 2-3 Holsteins 1200-1300 lbs. 56.00-56.25.

SLAUGHTER HEIFERS: Choice 2-4 975-1125 lbs. 63.00-64.50, part load 65.00. Mixed Good and Choice 2-3 950-1050 lbs. 61.00-63.00. Few Good 59.50-61.50.

Average of LS 214 detailed quotations for 900-1100 lb. Choice Steers 64.00; 1100-1300 lbs. 65.12. Average cost Steers 64.50, average weight 1195 lbs. as compared 62.77 and 1182 lbs. a week ago. Average cost Heifers 63.33, average weight 1070 lbs.; as compared 61.28 and 1052 lbs. a week ago.

SLAUGHTER COWS: Breaking Utility and Commercial 2-3 32.00-33.00. Cutter and Boning Utility 1-2 32.00-34.00, few high dressing individuals to 34.75. Canner and Low Cutter 30.00-32.00.

SLAUGHTER BULLS: 1-2 1425-2250 lbs. 43.00-44.75, low dressing to 39.50.

WEEKLY CATTLE SUMMARY: Closing prices feeder steers and heifers unevenly steady to 1.00 higher. Slaughter cows steady to 1.00 higher. Slaughter bulls steady, instances 50 cents higher. Light pre-holiday receipts caused some unevenness in trading as buyers cautious on some weights due to poor load out prospects. Receipts this week near 7,535 head; last week 17,270; last year 19,256. Feeder steers and heifers 92% or run; cows and bulls 8%.

FEEDER STEERS: Medium and large frame 1; 300-400 lb. 72.50-79.25; 400-500 lb. 70.25-77.00; 500-600 lb. 64.00-71.00; 600-700 lb. 62.50-66.75; 700-800 lb. 59.75-63.50; 800-900 lb. 57.25-61.25.

FEEDER HEIFERS: Medium and large frame 1; 300-400 lb. 61.00-66.00; 400-500 lb. 60.00-64.75; 500-600 lb. 56.00-60.25**; 600-700 lb. 55.50-58.00; 700-750 lb. 54.75-55.90.

SLAUGHTER COWS: Breaking utility and commercial 2-4 30.75-36.50; boning utility 1-2 32.00-37.25; cutter 1-2 31.75-35.75; canner and low dressing cutter 29.50-32.50.

SLAUGHTER BULLS: Y. G. 1 1000-1500 lb. 40.90-45.00; 1500-1800 lb. 42.00-46.50.

Oklahoma National Stockyards

Wednesday, Nov. 27
Report Supplied by USDA

ATTENTION FARMERS

The New Way To Market Your Livestock
EVERY MONDAY HATFIELD PACKING CO. WILL RECEIVE YOUR HOGS
EVERY THURSDAY MOYER PACKING CO. WILL RECEIVE YOUR CATTLE

AT THE
BLAIR-BEDFORD BUYING STATION
RD #1, Martinsburg, PA

- Every Monday we will receive your hogs from 7:30 a.m. to 11 a.m. Also, calves from 7:30 a.m. to 3 p.m. Your animals will be weighed & paid for immediately
- We will also accept your sows and boars
- Your Butcher Cattle & Calves will be received from 8 a.m. to 12 noon every Thursday We will either pay you for your cattle immediately or you may sell them dressed weight
- There will not be a commission or yardage fee deducted from your check
- You may call our office Monday mornings and we will be able to tell you the base price for hogs for the day

DALE R. HOOVER - Owner
Blair-Bedford Buying Station

Business Residence
Phone 814-793-3077 Phone 814-793-2657

Green Dragon Livestock Sales

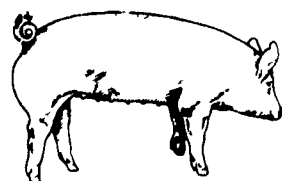
Location: Ephrata RD 4. 1 mile N. on North State St., Ephrata.

COWS COWS COWS
SALE EVERY FRIDAY

Lots of good Northern Feeder & Stockers. Slaughter Cows - Bull Steer, Veal-lamb.
11:00 A.M.-Beef Sale 200-300 each week.
1:00 P.M.-Dairy Sale.
7:00 P.M.-Small Animal Sale.

For Special Sales and Herd Dispersals on farm or at our barn or other market information call: Office 717-733-2444, Home 717-838-4318.

WALTER H. RISSER, Proprietor
All out of state and new buyers must have cash or certified check or current letter of credit from bank.



EMERY'S BUYING STATION

OPEN TO RECEIVE YOUR MARKET HOGS

AT THE GREEN DRAGON MARKET
RD 4, EPHRATA, PA 17522
1 MILE NORTH OF EPHRATA
ON NORTH STATE STREET.

HOURS: MONDAY, TUESDAY, and WEDNESDAY 6:00 A.M. to 11:30 A.M.
215-458-5677 Residence
717-733-9648 Office

YOU ARE PAID FOR YOUR HOGS IMMEDIATELY

Ken & Lois Emery, Proprietors

HAY & STRAW SALE

12:00 Noon
Every Wednesday
Westend of Avondale at the intersection of Baltimore Pike and Route 41.

Harvey Z. Martin
215-268-3604
(Office)
215-445-5303
(Residence)

KING'S AUCTION, KIRKWOOD

Hay, Straw and Grain Auction

EVERY TUESDAY

12:00

Located Rt. 472 5 miles south of Quarryville or 6 miles north of Oxford at Shaub's Auction House

Lloyd H. Kreider, Auctioneer
AU-000513L

No out of state checks
ALL TRUCKERS AND FARMERS WELCOME



"WANTED" LEGHORN FOWL



NEW SANITIZED CAGE CART SYSTEMS OR COOPS

Call Richard Sechler, Tom Feger, Nelson Legge for quotations

PA Watts # 800-342-2249
or call collect 215-488-7617

SECHLER'S POULTRY, INC.
Box G, Strausstown, PA 19559

*50 Per

Round Turn Commission

All commodities plus stock indexes and bond futures. Full service. Call or write for our professional market letter. Specializing in commodities exclusively. * Volume discounts available.

800-322-9274 PA

800-523-9388 US

215-821-8111

Rosenthal & Co.
2200 Hamilton Street
Allentown, PA 18104