

# Livestock market and auction news

## Morrison Cove Livestock

Martinsburg, Pa.

Monday, November 18

Report supplied by auction

**CATTLE** 250. High Ch. & Pr. sl. steers 61.50-63.75, Choice 60.00-61.75, High Good & Low Ch. 58.50-61.00, Good 56.50-59.00, Good & Choice holsteins 45.00-51.00, Standard 41.00-43.75. Choice sl. heifers 58.50-61.25, Good 54.50-58.00, Standard 43.00-48.50, Utility 33.00-41.00. Breaking Ut. & Commercial sl. cows 36.00-39.00, Cutter & Boning Ut. 32.50-35.75, Canner & Low Cutter 27.50-32.00, Shells down to 20.00. Choice sl. bullocks NONE, Good 45.50-48.00, Standard 42.00-43.75, Utility 31.50-40.00. Yield Grade No. 1 1400-1750 lbs. sl. bulls, 43.50-46.75, Yield Grade No. 2 1200-1600 lbs. 40.00-43.25.

**FEEDER CATTLE:** Steers Good: 54.00-62.00, Standard: 37.50-45.00, Heifers Good: 50.00-56.50, Standard: 33.00-44.50, Bulls Good: 52.00-56.75, Standard: 35.00-44.00.

**CALVES** 291. High Ch. & Pr. NONE, Choice 74.50-81.00, Good 65.00-72.00, Standard 55.00-63.50, Standard & Good 90 lb. to 130 lb. 50.00-63.50, Utility 50-80 lbs. 42.00-51.00.

**FARM CALVES:** Holstein bulls 90 to 130 lbs. 75.00-116.00, Holstein heifers 90 to 130 lbs. 55.00-64.00.

**HOGS** 102. US No. 1-2 210-240 lbs. barrows and gilts 46.50-48.25, No. 1-3 210-240 lbs. 45.00-46.75, No. 2-3 210-250 lbs. 44.50-45.00, No. 1-3 280-295 lbs. 44.00-44.50. Sows US No. 1-3 300-600 lbs. 38.00-41.00, No. 2-3 300-600 lbs. 35.50-38.75. Boars 28.00-30.50, Light weights 32.50-34.00.

**FEEDER PIGS** 24. US No. 1-3 30-40 lbs. feeder pigs 24.50-32.50 per head, No. 1-3 40-60 lbs. 35.00-38.50, Ut. 25-30 lbs. 12.50-18.50 per head.

**SHEEP** 13. High Ch. & Pr. 90-110 lbs. 64.00-68.50, Good 75-85 lbs. 62.00-64.00, Utility 50-70 lbs. 56.00-61.50. Slaughter ewes 12.50-25.50. 16 **GOATS** 14.50-40.00 per head.

## Lebanon Valley Livestock

Lebanon, Pa.

Tuesday, November 19  
Report Supplied by PDA

**CATTLE** 264...PDA—Compared with last Tuesday's market, slaughter steers steady \$1 lower; Cows mostly steady 50 cents lower...Good slaughter steers 50.00-57, few Standard 45.00-50; Good & Choice holsteins 46.75-51.75, few 54.00, Standard 40.75-46, Utility 38.25-42.75...Choice 2-4 875-1615 lbs. heifers 54.25-59.75, few yield grade 4-5 43.75-50.00, one Good at 51.00, few Standard 42.25-47, Utility 35-41.50...Breaking Utility & Commercial slaughter cows 35-36.85, few 39.75, Cutter & Boning Utility 32.75-34.75, few 36.00, Canner & Low Cutter 28-33.25, Shells down to 22...Two Utility slaughter bullocks 35.75&37...Yield Grade No. 1 1250-1735 lbs. bulls 44.75-48.25, few 50-52.75, #2 1310-1580 lbs. 41-45.75.

**CALVES** 270...Vealers steady to \$2 lower...Two Prime vealers 91.00&96, few Choice 70.00-75, few Good 58.00-68, Standard & Good 90-115 lbs. 48.00-52, 65-85 lbs. 44.00-48, few Utility 60-75 lbs. 40.00-43...**FARM CALVES:** Holstein

Bulls 90-130 lbs. 68.00-83, few down 52.00.

**HOGS** 156...Barrows and gilts 25 cents to \$1 higher on small supply...US No. 1-2 225-260 lbs. barrows and gilts 47.25-48.50, No. 2-3 210-265 lbs. 46.35-47.75, lot No. 2-4 210 lbs. at 44.85, No. 1-3 160-205 lbs. 36.50-42.50...US No. 1-3 290-635 lbs. sows 35.50-39...Few Boars 28-30.75, light weights 31.25-33.

**FEEDER PIGS** 21...Lot US No. 1-3 41 lbs. feeder pigs at 70.00, few 60-100 lbs. 54.00-60 - all per hundredweight.

**SHEEP** 18...Few Choice 65-85 lbs. woolled slaughter lambs 61.00-72, few 30-50 lbs. new crop lambs 75.00-76, few Good 115-150 lbs. 40.00-58, few Utility 45-65 lbs. 24.00-40. One Ram at 13.00...**GOATS** 2: 32.00&44 per head.

## Dewart Livestock

Dewart, Pa.

Monday, November 18

Report Supplied by PDA

**CATTLE** 248...PDA—COMPARED WITH THE MARKET TWO WEEKS AGO: Few Choice 1100-1385 lbs. slaughter steers 58.50-61, few Good 49.00-57, few Standard 38-43.25; Few Choice holsteins 52.75-

53.50, few Good 45.50-47...Few Choice heifers 55.25-60.25, few Good 45-50.25...Breaking Utility & Commercial slaughter cows 34.25-36.75, couple 38.75, Cutter & Boning Utility 32.50-34.75, Canner & Low Cutter 28.00-32, Shells down to 22...Few Yield Grade No. 1 1150-1525 lbs. slaughter bulls 42.50-49, few #2 860-1175 lbs. 38.50-43.10...**FEEDER CATTLE:** Medium Frame #1 3-645 lbs. steers 51.00-61.00.

**CALVES** 225...Choice vealers 71.00-91, few Good 65.00-75, few Standard & Good 110-125 lbs. 54.00-60, 70-105 lbs. 45.00-52, Utility 60-85 lbs. 38.00-45...**FARM CALVES:** Holstein Bulls 90-125 lbs. 53.00-87, mostly 70.00-82.00.

**HOGS** 105...US No. 2-3 215-240 lbs. barrows and gilts 43.00-45.75, couple 52.50, few lots No. 2-3 (light) 135-150 lbs. 35.50-35.75...US No. 1-3 435-635 lbs. sows 35.00-39...Boars 28.00-32.50.

**FEEDER PIGS** 85...US No. 1-3 15-20 lbs. feeder pigs 20.00-24.50 per head, 35-50 lbs. 30-37.50, one lot 65 lbs. at 39.50 per head.

**SHEEP** 47...Choice 75-115 lbs. woolled slaughter lambs 60.00-65, couple to 71.00

## Green Dragon Livestock Sales

Location: Ephrata RD 4. 1 mile N. on North State St., Ephrata.

## COWS COWS COWS SALE EVERY FRIDAY

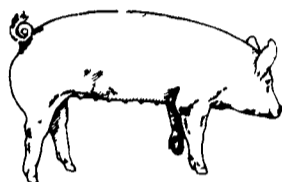
Lots of good Northern Feeder & Stockers. Slaughter Cows - Bull Steer, Veal-lamb.

11:00 A.M.-Beef Sale 200-300 each week.  
1:00 P.M.-Dairy Sale.  
7:00 P.M.-Small Animal Sale.

For Special Sales and Herd Dispersals on farm or at our barn or other market information call: Office 717-733-2444, Home 717-838-4318.

**WALTER H. RISSER, Proprietor**

All out of state and new buyers must have cash or certified check or current letter of credit from bank.



## EMERY'S BUYING STATION

### OPEN TO RECEIVE YOUR MARKET HOGS

AT THE GREEN DRAGON MARKET  
RD 4, EPHRATA, PA 17522  
1 MILE NORTH OF EPHRATA  
ON NORTH STATE STREET.

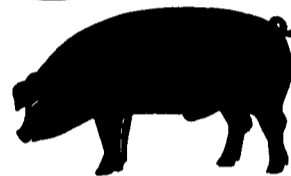
**HOURS:** MONDAY, TUESDAY, and WEDNESDAY 6:00 A.M. to 11:30 A.M.  
215-458-5677 Residence  
717-733-9648 Office

**YOU ARE PAID FOR YOUR HOGS IMMEDIATELY**

Ken & Lois Emery, Proprietors



GWALTNEY of SMITHFIELD, LTD.



We will be receiving hogs at Vintage Sales Stables in Paradise, Pa. Mondays, Wednesdays, Thursdays & Fridays from 7 a.m. to 12 noon  
**717-442-4742**

## ATTENTION YORK COUNTY HOG PRODUCERS

We will be receiving hogs at Thomasville, Pa. Tuesdays 7 a.m. to 12 noon  
Futures forward contracts are available. No commission, paid promptly.  
York County - **717-792-9836**

## HAY & STRAW SALE

12:00 Noon  
Every Wednesday  
Westend of Avondale  
at the intersection of  
Baltimore Pike and  
Route 41.

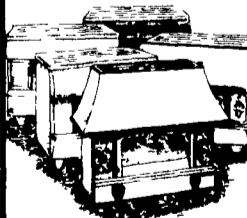
Harvey Z. Martin  
215-268-3604  
(Office)  
215-445-5303  
(Residence)

## KING'S AUCTION, KIRKWOOD

Hay, Straw and Grain Auction  
**EVERY TUESDAY**  
12:00  
Located Rt. 472 5 miles south of Quarryville or 6 miles north of Oxford at Shaub's Auction House

Lloyd H. Kreider  
Auctioneer  
AU-000513L  
No out of state checks  
**ALL TRUCKERS AND FARMERS WELCOME**

## SURDIAC COAL STOVES



Hopper Feed and Automatic Draft

Stop By For Demonstration

## BOWMAN'S STOVE SHOP

RD 3, Ephrata, PA 17522  
Rt. 322, 1 Mi. East of Ephrata

**(717) 733-4973**  
Tues., Wed. 10-6;  
Thurs., Fri. 10-8;  
Sat. 10-4. Closed Monday

## MELHORN SALES, SERVICE, TRUCKING CO.

1010 W. Main St., Mount Joy, PA 17552

The only full service company, in this area, to handle the total needs of the poultrymen.

Which Includes:

- DEKALB chicks & started pullets sold by Clay Mumma, Nelson Groff & Harold Mishler.
- Complete loading & unloading of pullets & spent hens.
- New modern dollie equipment to move your pullets fast and efficiently with minimum stress to the pullets

Place Your Confidence In A Full Service Company That Wants To Be Worthy Of Your Business

For More Information Phone:  
**717-653-1102 or 717-653-2787**

Monday - Friday 8 A.M. - 4 P.M. ask for Lynn or Wendy

