

Livestock market and auction news



Virginia Auction Summary

Nov. 7-13
 Report supplied by VDA
 Total of Va. Weekly Feeder Cattle Auction Receipts: 12,234.
 Trend: Mostly Steady to 2.00 Higher With Instances Of 4.00 Higher.

South & Southwest Va.

Nov. 7-13

Report supplied by VDA
 STEERS: Medium 1 300-500 lbs.

57.00-69.50; 500-700 lbs. 53.50-64.00, 700-1000 lbs. 50.00-58.00. Large 1 300-500 lbs. 61.00-74.00, 500-700 lbs. 56.00-66.00, 700-1000 lbs. 50.00-58.00. Small 1 300-500 lbs. 53.00-64.00, 500-700 lbs. 50.00-60.00, 700-1000 lbs. 50.75-55.50.

HEIFERS: Medium 1 300-500 lbs. 47.00-50.00, 500-700 lbs. 45.00-58.00, 700-900 lbs. 42.00-50.50. Large 1 300-500 lbs. 47.00-50.00, 500-700 lbs. 45.00-54.50, 700-900 lbs. 43.00-53.00.

Small 1 300-500 lbs. 42.00-48.00, 500-700 lbs. 39.00-48.00, 700-900 lbs. 38.00-44.00.

Northern Va. Auction Summary
 Nov. 7-13

Report supplied by VDA

STEERS: Medium 1 300-500 lbs. 56.00-69.00, 500-700 lbs. 54.00-67.00, 700-1000 lbs. 50.00-61.50. Large 1 300-500 lbs. 55.00-63.00, 500-700 lbs. 53.75-61.00, 700-1000 lbs. 50.50-59.00. Small 1 300-500 lbs. 52.00-63.50, 500-

700 lbs. 51.00-61.25, 700-1000 lbs. 50.00-59.50.

HEIFERS: Medium 1 300-500 lbs. 44.00-55.25, 500-700 lbs. 45.00-56.50, 700-900 lbs. 46.50-57.50. Large 1 300-500 lbs. 46.00-53.50, 500-700 lbs. 45.50-54.25, 700-900 lbs. 47.50-54.75. Small 1 300-500 lbs. 42.00-52.00, 500-700 lbs. 42.00-49.00, 700-900 lbs. 45.00.

Shenandoah Valley Livestock

Harrisonburg, Va.

Saturday, November 9

Report supplied by auction

FEEDER CATTLE: Trend-Steady. STEERS: M&L-1 300-500 lbs. 60.00-66.00, 500-700 lbs. 57.00-62.50, 700-1000 lbs. 53.00-58.75, Holstein 300-1000 38.50-48.50. S-L&M&L-2 300-500 lbs. 55.00-63.50, 500-700 lbs. 54.00-60.00, 700-1000 lbs. 48.00-54.00. FEEDER BULLS: Steady. M&L-1 300-500 lbs. 56.00-62.00; 500-700 lbs. 47.00-57.50, 700-1000 lbs. 44.00-45.00. S-L&M&L-2 300-500 lbs. 47.00-55.50; 500-700 lbs. 47.00-48.00; 700-1000 lbs. 39.25-41.00.

HEIFERS: 2.00 Higher. M&L-1 300-500 lbs. 48.50-54.25, 500-700 lbs. 47.50-54.24, 700-800 lbs. 47.00-52.75. S-L&M&L-2 300-500 lbs. 40.00-50.00, 500-700 lbs. 43.00-48.00; 700-800 lbs. 42.00-45.00.

STOCK COWS: Baby Calves 15.00-83.00 mostly 40.00-65.00.

SLAUGHTER COWS: Trend-1.00 to 2.00 Higher. Utility & Commercial 2-4 31.00-37.00; Canner & Cutters 1-3 25.25-30.50.

SLAUGHTER BULLS: 1 & 2 36.00-44.00.

LAMBS: Trend- 2.40 Higher. Blue O. High Choice & Prime 72.50; Red O. Choice 69.00; Feeder Lambs Choice 71.00-73.25; Yr. Old-4-6 Solid Mouth 25.00-40.00.

HOGS: Sows 37.50-42.00; Boars 25.00.

VEAL: Choice & Prime 73.00; Good 56.00-66.00.

SLAUGHTER CALVES: Good & Choice 48.00-55.00

Four States Livestock

Hagerstown, Md.

Wednesday, November 6

Report supplied by Auction

SLAUGHTER: Fed Steers- Good 51.00-55.50; Medium 50.00 Down. Heifers- Choice 52.00-54.00; Good 45.00-51.00; Medium 44.00-Down. Cows- Good Run \$1.00 Higher. High Yield 37.50-40.50; Average 33.00-37.00; Big Middle 28.00-32.00; Fatty Herf. 29.00-33.00; Shelly 31.00-Down. Fat Bulls- \$1.00 Higher. Good 45.00-48.00; Medium 40.00-44.00. Veal Calves- \$1.00 To \$3.00 Higher. Farm Bulls 10.00 Higher; Choice 81.00-91.00; Good 70.00-80.00; Medium 60.00-69.00; Farm Hfrs. 57.00-63.00; Farm Bulls 75.00-90.00; Light Calves 51.00-62.00; Weak Calves 50.00-Down. Lambs-Few Offered. Good 60.00-72.00; Medium 51.00-59.00.

STOCKER: Steers- 300-550 lbs. \$1.50 Lower. Choice 58.00-61.50; Good 52.00-57.00; Medium 47.00-51.00; Culls 46.00-Down. Steers- 600-850 lbs. Choice 56.00-59.00; Good 51.00-55.00; Medium 50.00-Down. Heifers- (All Weights). Choice 48.00-51.50; Good 43.00-47.00; Medium 37.00-42.00. Bulls- Choice 55.00-57.50; Good 50.00-54.00; Medium 45.00-49.00. Dairy Cows- To \$575.00. Pigs, Hd- \$2.00 Higher. 20-35 lbs. 17.00-27.00; 40-60 lbs. 28.00-41.00. Shoats By Lbs. 40.00-50.00; Slaughter Hogs- Steady Prices. 220-240 lbs. 44.25-44.75, 260-290 lbs. 40.00-43.50. Sows- 400-625 lbs. 34.50-39.25.

Special Feeder Cattle Sale Next Week Nov. 13 7:P.M. If You Have To Sell, Bring Them In, These Sales Are Well Advertised. All Cattle Weighed When Received And Sold In That Order. Open At 8:A.M. Every Wednesday.

Green Dragon Livestock Sales



Location: Ephrata RD 4. 1 mile N. on North State St., Ephrata.

COWS COWS COWS SALE EVERY FRIDAY

Lots of good Northern Feeder & Stockers. Slaughter Cows - Bull Steer, Veal-lamb.

11:00 A.M.-Beef Sale 200-300 each week.

1:00 P.M.-Dairy Sale.

7:00 P.M.-Small Animal Sale.

For Special Sales and Herd Dispersals on farm or at our barn or other market information call: Office 717-733-2444, Home 717-838-4318.

WALTER H. RISSER, Proprietor

All out of state and new buyers must have cash or certified check or current letter of credit from bank.

TOP PRICES FOR DOWN, CRIPPLED AND AS IS COWS, BULLS & STEERS

Slaughtered Under Federal Inspection
 Paid On Dressed Weight

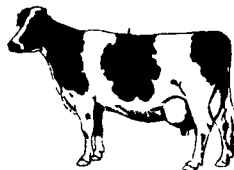
Tom Mulvaney
 Livestock Trucking
 (201) 454-4247

HANDLING:

Warren, Hunterdon, Sussex And Somerset Counties, New Jersey

IN PENNA:

Northampton, Bucks And Lehigh Counties



SWINE PRODUCTION SALES AND SERVICE

Complete Feeding Programs and Services

Feeding Programs to Meet Your Individual Needs

Computerized Record Keeping System

Providing Veterinarian Service

PA. Toll Free
 1-800-468-5524



419 W. High Street
 Elizabethtown, PA
 17022

Supplying Farm Fresh Feeder Pigs

Marketing and Hedging Services

Marketing of Genesis Breeding Stock

Developing Individual Financial Programs

Direct Dial
 (717) 367-1525

SHIPLEY

Large White - Duroc - Landrace Boars
 Large selection, rugged, sound, aggressive, testation proven boars. Over 150 on hand at all times. Gilts-singles or groups. Bred Gilts - singles or groups. Blood tested, production tested, superior genetics, superior guarantee. Accredited herd #186 PRV-FRV. Accredited herd #175 Brucellosis free

Free buying service, free delivery
 Your Satisfaction Guaranteed
 Write or Call collect:

Shipley Duroc
 8086 Marion Rd., Northeast
 Newark, Ohio 43055

Sidney
 614-745-2328

Randy
 614-745-2911



I'M NOT LION...

The Classified Livestock Section Has Bestly Selections!

ATTENTION FARMERS

The New Way To Market Your Livestock

EVERY MONDAY **HATFIELD PACKING CO.** WILL RECEIVE YOUR HOGS

EVERY THURSDAY **MOYER PACKING CO.** WILL RECEIVE YOUR CATTLE

AT THE
BLAIR-BEDFORD BUYING STATION
 RD #1, Martinsburg, PA

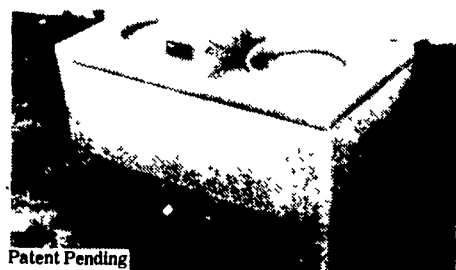
- Every Monday we will receive your hogs from 7:30 a m to 11 a m Also, calves from 7 30 a m to 3 p m Your animals will be weighed & paid for immediately
- We will also accept your sows and boars
- Your Butcher Cattle & Calves will be received from 8 a m to 12 noon every Thursday We will either pay you for your cattle immediately or you may sell them dressed weight
- There will not be a commission or yardage fee deducted from your check
- You may call our office Monday mornings and we will be able to tell you the base price for hogs for the day

Thanksgiving Week
 Sale Wednesday, November 27
 instead of Thursday

DALE R. HOOVER - Owner
 Blair-Bedford Buying Station

Business Phone 814-793-3077 Residence Phone 814-793-2657

Lapp ENERGY FREE DRINKERS No Gas/No Electric



Patent Pending

40 Gallon

Drinkers have a new unique baffled drinking design manufactured from a durable poly product. A 2-hole 40 gallon and a 1-hole 4 gallon for all kinds of livestock, including horses, sheep, pigs, etc.

Manufactured By

SOUDESBURG MFG.

116 N. Soudersburg Rd., Gordonville, PA 17529

Authorized Dealers

LANCASTER CO. SHOW-EASE STALL CO.
 573 Willow Rd.
 Lancaster, PA 17601
 (717) 299-2536

REISTSVILLE AREA LAPPS SHARPENING SERVICE
 RD 2
 Myerstown, PA 17067
 Dealer Inquiries Invited

LOOKING FOR MORE INCOME?

We are looking for farmers to build new farrow to feeder pig units and contract with us for guaranteed income.



We Provide

- * Building Specifications
- * Sows
- * Feed
- * Vet Service and Medication
- * Complete Training in your new unit

All inquiries confidential. Send name, address, county and phone number to:

Lancaster Farming
 P.O. Box 366 - L-84
 Lititz, PA 17543