



Brockett's Ag Advice

By John E. Brockett
Farm Management Agent
Lewistown Extension Office

Mini analysis now available

During the month of October, County Agents from the eastern two thirds of the state participated in an inservice training program on using the mini analysis program developed for the Macintosh computer.

Each county extension office in the state has at least one Macintosh and one Apple IIe computer in their office. Agents in the western part of the state participated in a similar training session in June.

Some dairy farms are already on one of the farm analysis programs available in the state. However even these farms may be able to get some management information from the mini analysis.

Some of the features available from the mini are:

- a projection of what could happen if some management changes were made,
- an examination of feed efficiency or feed use on the farm,
- comparison between what the farmer exports for yields, inventories, milk sold, and milk price for the analysis and what is on the DHIA report,
- debt repayment ability, and
- money available for family living.

If you are interested, contact your county agent so they can sign you up.

Ease of collecting data: The mini analysis is quite simple when it comes to collecting data. There is a one-and-a-half-page data collection sheet with a two-page instruction sheet for use by whoever fills out the input form. An analysis can be made from less information.

In fact the mini analysis is geared to provide some analytical results from no more than the information used to complete the income tax form. However it must be remembered that the more

detailed the information fed into the program, the more useful the results will be that come out of the program.

Management changes for Projections: Management changes considered for the projection section are (1) increases of 5 and 10% in milk production, (2) increase of 10% in crop production, (3) increase of

10% in feed efficiency, (4) increase of 10% in hay quality, (5) increase of 10% in herd size with or without expansion of facilities, (6) decrease of 10% in herd size with either a 7 or 10% increase in production on the remaining cows, and (7) a combination of several of those changes.

Projection Changes: The projected changes are shown as (1) change in net cash income, (2) change in debt repayment ability, and (3) change in percentage of actual debt payment that is covered by the debt repayment ability.

As part of the program: To assist the farmer user with interpretation of the results, there are several mimeo attachments available that go with the printout for the completed program.

The most important is one titled "Interpretation of the Key Points of the Mini Analysis." It explains what each of the main points of the analysis means, then provides

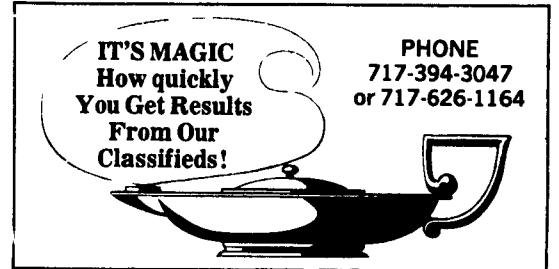
some guidelines as to whether a particular measure is good, average or a possible problem area.

A second mimeo deals with a discussion of feed efficiency with some possible solutions for improvement. A third one discusses the projection section and section and how to determine whether you have a credit problem and if so the potential for solving it.

The fourth one concerns suggestions on improving debt repayment ability.

The Mini will not: As useful as the mini analysis is there are some things that it will not do that are important. It will not provide a balance sheet. It also will not provide the user with an accrual net income. Finally it will not provide any kind of breakdown of enterprise costs and returns.

Why not talk to your county agent and see whether this program can be of assistance to you in the rather turbulent farm economic climate we will have for the next 3 to 5 years.



"HI-YIELD CORN EXCHANGE" PROGRAM

Shelled Corn \$2.55 Bu.

Ear Corn \$72.86 Ton

HERE'S HOW IT WORKS:

You Order - #508 - 16% Dairy Flakes List Price \$165.60

8 Ton Volume Disc \$ - 4.00

Delivered Price \$161.60

2 1/2% Cash Discount 15th Following Month \$ - 4.04

1400 lb. Ear Corn = 20 bu. Shell Corn @ \$2.55 bu. \$ - 51.00

You pay this balance 15th following month \$106.56

Deduct Additional \$3.00 For Payment In 10 Days.

Above prices for feed and corn exchange are for week of Nov. 11 and subject to change weekly.



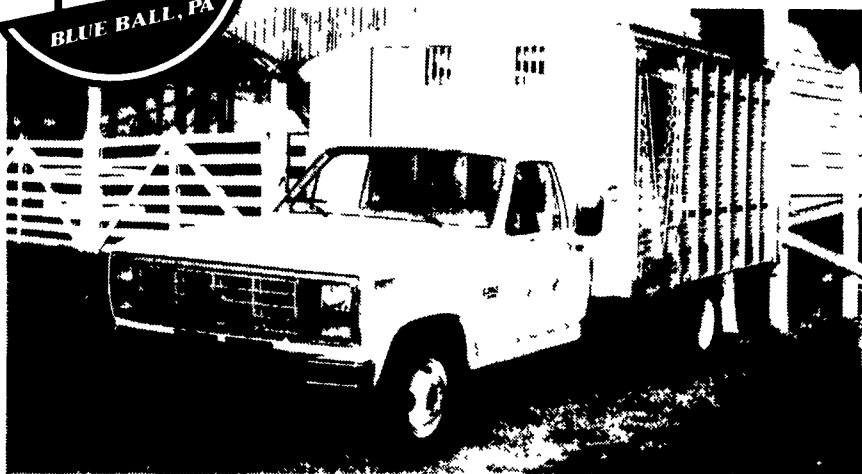
For More Information - Call Toll Free
From PA 1-800-732-0467 From MD, DE & NJ 1-800-233-0202

pennfield feeds

Quality - Performance - Service



ALUMINUM LIVESTOCK TRAILERS AND BODIES



ALUMINUM STRAIGHT LIVESTOCK BODIES

Standard Specifications:
LENGTHS AVAILABLE: 8' to 32' WIDTHS: 96" Standard to 102" Optional
HEIGHT: 6'6" Standard to 8' Optional



ALUMINUM EBY GOOSENECK TRAILERS

Standard Specifications:
LENGTHS AVAILABLE: 14' to 28' (longer lengths available as option)
WIDTHS: 96" Standard - 102" Optional HEIGHT: 6'6" Standard - 7'6" Optional

GOOD USED ALUMINUM TRAILERS & BODIES FOR SALE

- 19 Ft. Eby Cattle Body, Deck Rails
- 18 Ft. Featherlite
- 21 Ft. Eby Cattle Body, Deck Rails
- 24 Ft. Featherlite, Hydraulic Brakes



M.H. EBY, INC.

P.O. Box 127 Blue Ball, PA 17506
(717) 354-4971