

THE OLD FARMER'S ALMANAC

NOV. 4-10, 1985

Colder weather ahead, add a blanket to the bed.

Mound earth around bases of rose bushes for winter protection Average length of days for the week, 10 hours, 6 minutes Last quarter of the moon Nov 5 (Tues) N.T Ross became first woman elected governor of a state (Wyoming), Nov 4, 1924 Dylan Thomas died Nov 9, 1953 New York jeweler Harry Winston donated Hope Diamond (worth \$15 million) to the Smithsonian, Nov 8, 1958 How to Marry a Millionaire premiered in New York City, Nov 10, 1953 A bright eye indicates curiosity, a black eye too much



Ask the Old Farmer: I tried painting over water stains on a ceiling, but the stains still show How can I cover them up? B A W, Kanab, Utah
Paint on one coat of any white-pigmented shellac, available at paint stores, then paint as before
Home Hints: If the caning of a chair is sagging, turn the chair upside down and cover the caning for a while with a damp towel

OLD FARMER'S WEATHER FORECAST

New England: Week begins with cold temperatures and rain, snow in mountains, mid through end of week clearing, continued cold
Greater New York-New Jersey: Beginning of week warm, midweek becoming rainy and colder, cloudy and cold at week's end
Middle Atlantic Coastal: Beginning of week sunny, rainy and turning colder by midweek, clearing at week's end with frost likely
(All Rights Reserved Yankee Publishing Incorporated, Dublin, NH 03444)

Eighty-Four Livestock

Eighty-Four, Pa.

Monday, October 28

Report supplied by PDA

CATTLE 471: Compared with last Monday's market, slaughter steers \$1.00-1.50 higher. Few Choice 58.75-59.50, Good 53.25-56.75, Standard 45.50-53.00, Utility 40.00-44.50. Few Standard slaughter heifers 41.00-46.00, Utility 37.50-40.50. Breaking Utility & Boning Utility 34-38.00, few High Yielding 40.00, Cutter & Boning Utility 31.75-35, Canner & Low Cutter 27.50-31.75, Shells down to 21. Yield Grade No. 1 1100-1700 lbs. slaughter bulls 43.00-49, #2 900-1500 lbs. 38.25-42.25.

FEEDER CATTLE: Steers Medium & Large Frame #1 300-500 lbs. 58.00-69.00, 600-800 lbs. 52.00-57.00, Large Frame #2 700-850 lbs. 37.50-40.00. Heifers Medium & Large Frame #1 300-465 lbs. 44.00-53.00. Bulls Medium Frame #1 350-500 lbs. 55.00-64.00.

CALVES 295: Few Choice vealers 72.00-80.00, Good 63.00-74.00, Standard & Good 90-120 lbs. 45.00-51.00, 60-85 lbs. 40.00-46.00, Few Utility 45-95 lbs. 33.00-37.00.

FARM CALVES: Holstein bulls 90-125 lbs. 68.00-100.00, mostly 70.00-90.00, Slaughter Calves Good & Choice 250-350 lbs. 48.00-56.00.

HOGS 119: Barrows & gilts strong to 25 cents higher. US No. 1-2 215-245 lbs. barrows & gilts 44.00-44.25, No. 2-3 210-255 lbs. 43.50-44.00, Few No. 1-3 115 lbs. 41.00.

US No. 1-3 380-530 lbs. sows 38.00-40.00, No. 2-3 350-580 lbs. 35.00-37.50. Boars 29.00-30.50.

FEEDER PIGS 12: Few US No. 1-3 70-80 lbs. feeder pigs 30.00-32.00 per head, Few Utility 18 lbs. 11.00 per head.

SHEEP 131: Slaughter Lambs fully steady. High Choice & Prime 90-95 lbs. 69.00-72.00, One Lot 119 lbs. 65.75, Few Choice 80-86 lbs. 65.00-67.00, Good & Choice 55-70

lbs. Feeder Lambs 65.00-72.50. Slaughter Sheep 22.00-25.00.

GOATS 13: 12.00-30.00 per head.

Belknap Livestock

Dayton, Pa.

Wednesday, October 23

Report Supplied by PDA

CATTLE 111: SUPPLY INCLUDED 65% COWS.. Compared with last Wednesday's market, slaughter cows about steady... One Choice slaughter steer at 56.75, one Good at 54.25, few Utility 37.25-42.75... Breaking Utility and Commercial slaughter cows 34.00-36, yield grade 4-5 30.00-33, Cutter and Boning Utility 31.50-35.75, Canner and Low Cutter 25-31.75, Shells down to 20... Few Standard and Good slaughter bullocks 46-48.25... One Yield Grade No. 1 1780 lbs. slaughter bull at 42.00. **FEEDER CATTLE:** Few Medium Frame #2 390-490 lbs. heifers 28.00-36... Medium Frame #1 4-580 lbs. bulls 49.00-56.00.

CALVES 105: Couple Good vealers at 65.00, Standard and Good 90-120 lbs. 44.00-49, 60-85 lbs. 33.00-45... **FARM CALVES:** Holstein Bulls 95-130 lbs. 60.00-82.00.

HOGS 196: BARROWS AND GILTS MOSTLY \$1.50 LOWER... US No. 1-2 215-250 lbs. barrows and gilts 44.40-45.50, No. 2-3 220-260 lbs. 43.00-44, lot No. 1-3 190 lbs. at 42.00... **SOWS STEADY:** US No. 1-3 275-660 lbs. sows 33.50-36.50, one 38.00... **COUPLE** Boars 13.00 & 31.00.

FEEDER PIGS 28: US No. 1-3 20-35 lbs. feeder pigs 13.00-31 per head.

SHEEP 40: Couple Lots Mixed Good and Choice 81 & 97 lbs. wooled slaughter lambs 63.00 and 60.50, lot Good 60 lbs. at 57.50... Slaughter ewes 13.00-29.00... **GOATS 7:** 10.00-34 per head.

New Wilmington Livestock

New Wilmington, Pa.

Monday, Oct. 28

Report supplied by PDA

CATTLE 291: Compared with last Monday's market, slaughter cows about steady. Few High/Good & Low Choice slaughter steers 57.00-59.75, Good 52.00-56.00, Standard 45.00-49.00, Few Utility 40.00-42.75. Couple Choice slaughter heifers 53.75 & 54.75, Few Good 50.00-42.50, Standard 41.00-48.00, Utility 35.00-40.00. Breaking Utility & Commercial slaughter cows 33.50-37.00, 4-5 30.00-33.25, Cutter & Boning Utility 31.50-35.00, Canner & Low Cutter 22.00-32.00, Shells down to 15.00. Few Yield Grade No. 1 1180-2005 lbs. slaughter bulls, 44.50-46.00, Few Yield Grade No. 2 1200-1360 lbs. 40.00-42.00.

FEEDER CATTLE: Steers Medium Frame #1 355-505 lbs. 50.00-58.00; Heifers Medium & Large Frame #1 305-550 lbs. 40.00-46.50, 550-730 lbs. 35.00-43.00, Medium & Large #2 380-635 lbs. 30.00-38.00; Bulls Medium & Large Frame #1 460-720 lbs. 41.50-50.00, Medium & Large Frame #2 560-730 lbs. 30.00-38.00.

CALVES 342: Vealers mostly \$5.00 lower. Few Choice vealers 80.00-90.00, Few Good 60.00-72.50, Standard & Good 90-120 lbs. 42.00-51.00, 65-85 lbs. 35.00-42.00, Utility 50-90 lbs. 20.00-30.00.

FARM CALVES: Holstein bulls 95-135 lbs. 65.00-75.00, Holstein heifers 90-120 lbs. 48.00-56.00.

HOGS 377: Barrows & gilts mostly 50 cents higher. US No. 1-2 220-245 lbs. barrows & gilts 44.50-45.75, No. 2-3 210-250 lbs. 43.50-44.35, Few No. 2-4 250-260 lbs. 43.10-43.50. Sows 4.00-7.00 higher. US No. 1-3 325-570 lbs. sows 37.00-44.00, 240-325 lbs. 29.00-36.00. Boars 28.00-30.75.

FEEDER PIGS 63: US No. 1-3 15-30 lbs. feeder pigs 10.00-26.00 per head, No. 1-3 30-45 lbs. 25.00-39.00, Utility 20-30 lbs. 10.00-13.00 per head.

SHEEP 218: High Choice & Prime 70-120 lbs. 64.50-70.00, Choice 70-110 lbs. 64.00-69.00, Good & Choice 45-80 lbs. Feeder Lambs 60.00-71.00. Slaughter ewes 10.00-34.00.

Keister's Livestock

Middleburg, Pa.

Saturday, October 19

Report supplied by PDA

CATTLE 257: Compared with last Tuesday's market, slaughter steers steady to \$1.00 lower. Slaughter cows uneven, about steady. Choice slaughter steers 1000-1350 lbs. 55.75-62.00, Good 48.00-54.75, Couple to 58.00, Choice holsteins 46.00-51.00, Good 44.00-

47.00, Standard 39.50-44.00. Few Choice slaughter heifers 54.00-58.50, Few Good 44.50-47.50. Breaking Utility & Commercial slaughter cows 32.00-34.35, Individual at 35.50, Cutter & Boning Utility 31.50-34.00, Canner & Low Cutter 27.75-31.00, Shells down to 22.00. Yield Grade No. 1 990-1950 lbs. slaughter bulls, 45.00-50.75.

FEEDER CATTLE: Few Steers Medium #1 400-600 lbs. 50.00-55.00.

CALVES 165: Few Choice Vealers 80.00-95.00, Few Standard & Good 110-125 lbs. 58.00-65.00, 70-100 lbs. 44.00-52.00, Few Utility 60-80 lbs. 35.00-40.00.

FARM CALVES: Holstein bulls 90-125 lbs. 75.00-85.00, Few 90.00, Holstein heifers 90-120 lbs. 50.00-55.00.

HOGS 546: Barrows & gilts steady 50 cents higher. US No. 1 220-235 lbs. barrows & gilts 48.00-49.25, Few 49.75, No. 1-2 200-240 lbs. 46.00-48.00, No. 2-3 190-250 lbs. 45.00-46.00, No. 2-4 200-270 lbs. 42.00-45.50. Sows - US No. 1-3 290-500 lbs. sows 34.00-38.00, Few 42.00, No. 2-3 300-600 lbs. 30.00-34.00. Boars 29.50-30.50.

FEEDER PIGS 243: US No. 1-3 20-35 lbs. feeder pigs 26.00-38.50 per head, No. 1-3 35-50 lbs. 38.00-45.00 per head.

SHEEP 22: Choice 85-110 lbs Wool Slaughter Lambs 63.00-68.00

TOP PRICES FOR DOWN, CRIPPLED AND AS IS COWS, BULLS & STEERS

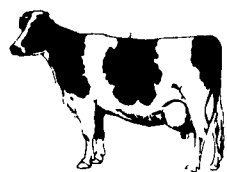
Slaughtered Under Federal Inspection
Paid On Dressed Weight

Tom Mulvaney
Livestock Trucking
(201) 454-4247

HANDLING:
Warren, Hunterdon, Sussex
And Somerset Counties, New Jersey

IN PENNA:

Northampton,
Bucks And
Lehigh Counties



FRIDAY, NOV. 22 ON THE FARM MONTHLY BRED GILT SALE

Sale to Start Promptly Every 4 Weeks at 1:00 P.M.

Located 18 miles south of Lancaster, Pa., 6 miles south of Quarryville, take Rt. 272 to Little Britain, turn north, follow Little Britain Road to Jackson Road, right. 2nd farm, OR take Rt. 222, out of Quarryville to Cedar Hill Road to Little Britain Road to Jackson Road, left Watch for sale arrows.

50 to 60 Head
Now selling our new hybrid gilts representing mostly York & Hampshire & Landrace cross. Bred for easier & less trouble over farrowing and better weight gains.

Validated Brucellosis Free Herd #169
Qualified Pseudorabies Free Herd #53

Hand mated with Breeding Dates

Local Trucker Available
No Hogs Sold On Commission

CHRIST A. BEILER
R.D. 2, Quarryville, Pa
JOHN B. STOLTZFUS
R.D. 1, Kirkwood, Pa

Abe Diffenbach, Auctioneer AU225L
NEXT SALE DATE DEC. 20

Green Dragon Livestock Sales



Location: Ephrata RD 4. 1 mile N. on North State St., Ephrata.

COWS COWS COWS SALE EVERY FRIDAY

Lots of good Northern Feeder & Stockers. Slaughter Cows - Bull Steer, Veal-lamb.

11:00 A.M.-Beef Sale 200-300 each week.
1:00 P.M.-Dairy Sale.
7:00 P.M.-Small Animal Sale.

For Special Sales and Herd Dispersals on farm or at our barn or other market information call: Office 717-733-2444, Home 717-838-4318.

WALTER H. RISSER, Proprietor

All out of state and new buyers must have cash or certified check or current letter of credit from bank.



ATTENTION FARMERS

EVERY MONDAY
HATFIELD PACKING CO. and
MOYER PACKING CO.

Will Receive Your
Hogs and Cattle at the
DANVILLE LIVESTOCK MARKET
RD 4, Danville, PA

- We will receive your hogs from 8 AM to 12 Noon every Monday. Your hogs will be weighed and paid for immediately.
- We will also accept your sows & boars.
- Your cattle will be received from 12:30 to 5 P.M. We will either pay you for your cattle immediately or you may sell them dressed weight.
- There will not be a commission or yardage fee deducted from your check.
- You may call our office Monday morning and we will be able to tell you the base price for hogs for the day.

MELVIN M. LEHMAN - Owner
Danville Buying Station
Phone: 717-275-2880

CRIPPLED AND DISABLED

Gows, Steers & Bulls
For Slaughter Under
USDA Inspection

Call Wayne Taylor
717-866-6289
215-286-9400

Lebanon, Berks, Lancaster
& Chester Counties