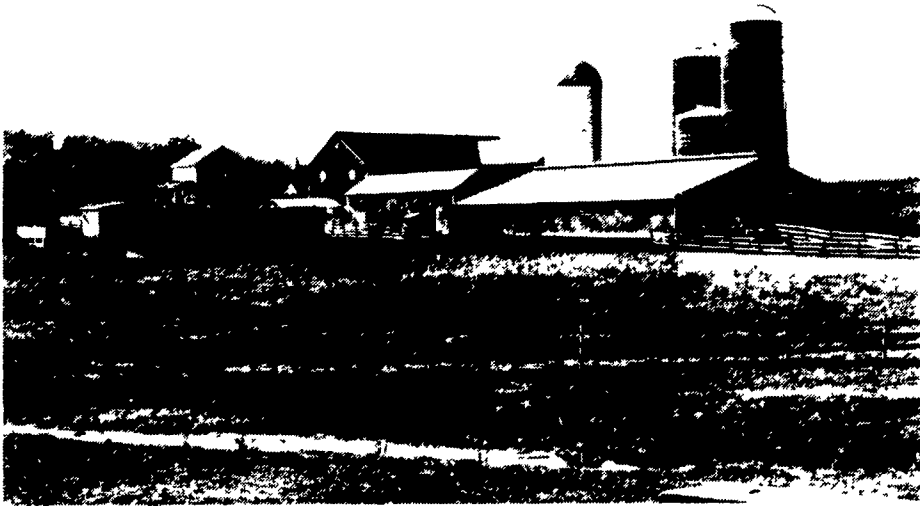


STATE of the Art in the

— TWO DAYS —

Wednesday, November 6

10:00 AM - 3:00 PM

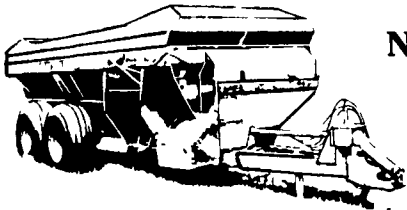


DANCING BELL FARM
Don & Vernetta Meyers & Family
Kempton, PA

*Hot Lancaster Co.
Pot Pie!*

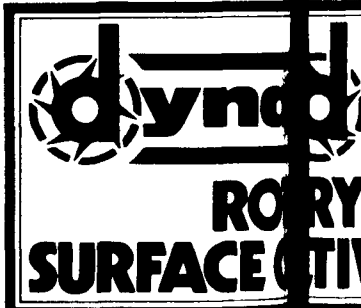
*Gifts For
Ladies*

FIELD DAY AND "HANDS-ON" DAY



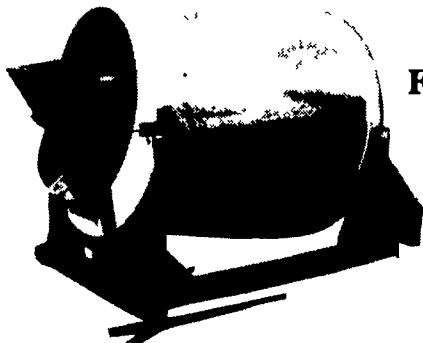
NEW HOLLAND MODEL 307 SLURRY SPREADER

FORD TW 5 4WD TRACTOR



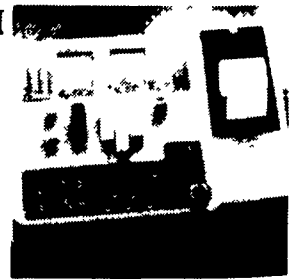
Hart - Carter's Reaction
Driven Primary and S
Tillage Tool

THE HIT OF THE AG
DAYS FIELD DAY INST



FARMMASTER STAINLESS STEEL TUMBLE MIXER

LAC-TRACKER® COMPUTER FEEDING SYSTEM



6214 SLURRYSTORE® SYSTEM WITH SIDE MOUNT PUMP
The Safe, Total Manure Handling System That Saves Time,
Money And Plant Nutrients.

DIRECTIONS TO MEYERS FARM: Rt. 143 North of Rt. 22 Four Miles... Turn Left At Mobil Gas Station... Farm One Mile On Right.

CUMMINGS & BRICKER, INC.
100 Stover Drive
Carlisle, PA 17013
(717) 249-6720

CHARLES S. SNYDER, INC.
RD 3
Tamaqua, PA 18252
(717) 386-5945

FARMMASTER
New Holland, PA 17557
(717) 354-4051