

Livestock market and auction news

Frederick Livestock Auction

Hagerstown, Md.
Monday, October 28

Report supplied by auction

SLAUGHTER COWS: Good run steady to 50 cents higher. Good 37.00-39.50; Standard 33.00-36.00; Canners 30.00-32.00; Shelly 31.00 down. Bulls- \$1.00 Higher. Good 45.00-47.00; Medium 41.50-44.00. Steers- Good 52.00-54.50; Standard 47.00-51.00. Heifers- Choice 52.00-53.75; Medium To Good 47.00-51.00. Butcher Hogs- \$1.00 Higher. 220-260 lb. 44.75-45.00; 270-325 lb. 45.25-47.00. Sows- 300-500 lb. 33.00-35.50; Veal Calves- Good Run \$2.00 Higher. Good-Choice 70.00-85.00;

Standard 60.00-69.00; Stocky/Thin 52.00-59.00; Light Calves 52.00-61.00; Weak/Rough 51.00 down.

STOCK CATTLE: \$1.00-2.00 Higher. Few Light Wts. 62.00-64.00. Steers- Choice 58.00-61.50; Good 52.00-57.00; Medium 47.00-51.00. Heifers- Choice 51.00-55.00; Good 44.00-50.00; Medium 39.00-43.00. Bulls- Choice 53.00-55.50; Good 49.00-52.00; Medium 44.00-48.00. Springing Heifers- To \$750.00; Calves Returning To The Farm- Mostly Steady Holstein Heifers 90-120 lb. \$55.00-62.00. Holstein Bulls- 85-95 lb. 58.00-64.00; 100-115 lb. 65.00-74.00. Lambs- Good 56.00-

60.00; Medium 52.00-55.00. Pigs & Shoats- Steady Prices. 40-70 lb. 25.00-38.00; 20-35 lb. 15.00-24.00; By the lb. 40.00-43.00.

PROGRESS REPORT FROM WESTMINSTER

Opening date is almost here. We hope to see you all on Nov. 5th for the first sale in our new barn. We think you will be pleased with all the improvements.

We graded the parking lot, improved the unloading chutes, added a pull through chute for the trailers, and widened the alleys where cattle walk. Our ring should be the most impressive im-

provement with the doubling in size of our ring building. These are just some of the improvements we have made. Stop in and see for yourself.

THE SALE SCHEDULE WILL BE THE SAME AS BEFORE. POULTRY AT 5:00 P.M., AND LIVESTOCK AT 7:00 P.M. HAY SALES WILL BEGIN NOVEMBER 5th STARTING AT 12:00 NØON.

Chambersburg Livestock

Chambersburg, Pa.

Thursday, October 31

Report supplied by PDA

CATTLE: 244. Cows uneven about steady; few Good steers 48.75-49.75 with 1 Choice at 58.00; few Good 44.25-46.75; few Standard 39.50-40.00; Sl. cows: 34, 75.00-37.25; Cutter & Boning 33.00-36.25; Canner & Cutter 27.75-33.00; Yield Grade No. 1, 1120-2000 lb. bulls 42.00-48.85; few No. 2, 1000-1200 lb. 38.85-40.35.

CALVES: 397. Few Choice vealers 75.00-85.00; few Good 65.00-79.00; Standard & Good 70-105 lb. 53.50-60.00; Hol. bulls 90-130 lb. 60.00-81.00; heifers 90-120 lb. 57.00-

69.00.

HOGS: 41. One lot of No. 2-3, 235 lb. 44.75; 1 lot No. 2-4, 230 lb. 41.10; Sows a few No. 1-3, 350-450 lb. 37.50-38.50.

FEEDER PIGS: 14. One lot No. 1-3, 30 lb. at 17.00 per head; 1 lot 80 lb. 38.00 per head.

SHEEP: 12. Few Good & Choice 80-115 lb. 60.00-63.00.

GOATS: 10. Few Medium & Large 19.00-42.00 per head.

Penns Valley Livestock

Centre Hall, Pa.

Tuesday, October 29

Report supplied by Auction

Beef Cows: Utility and Commercial 36.10-38.25; Cutters 32.25-35.00; Canners 28.00-31.85; Shells 26.00.

Heifers: Commercial 35.00-41.50.

Steers: Choice 55.00-58.35; Good 50.00-52.50; Standard 42.00-46.75.

Bulls: Good 46.00-47.50; Standard 44.00-45.00.

Feeder Cattle: 300-500 lbs. large frame 48.00-51.00; 300-500 lbs. small frame 46.00-50.00; 500-700 lbs. large frame 44.00-50.00; 500-700 lbs. small frame 44.00-48.00.

LOUIS LYONS & SON

Consign your cattle and hogs, feeder pigs & calves to Louis Lyons & Son. They offer choice service, excellent sorting & marketing of your livestock.

Charles Diller, Manager

Phone 394-7915

Burnell Siegrist - Buyer & Seller

Phone 626-8653

Experienced Personnel

Immediate Weighing

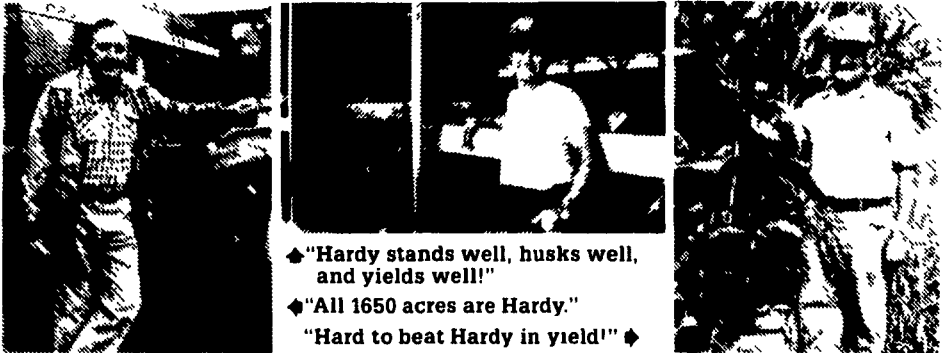
DEALERS WANTED
WHOLE COTTON SEED
AND PEANUT HULLS
NAAMAN EBERLY
Paradise, PA
717-687-0990
717-299-3001
DEALERS WANTED

JACQUES SEEDS

Successful farmers plant Hardy Brand® Corn.



"Hardy weighs up better... really comes through on poorer soil."



◆ "Hardy stands well, husks well, and yields well!"

◆ "All 1650 acres are Hardy."

◆ "Hard to beat Hardy in yield!" ◆

Hardy Brand Hybrid Corns have been scientifically bred for the Northeastern United States. They have proven their potential for high yields, superior standability, and high tolerance to predominant disease on farms throughout our market area. Many of our customers have been using Hardy Brand for years for reasons like the ones above.

Outstanding test results. Our new HARDY 760XS and HARDY 370XS have shown excellent yields in these university trials *

University Test	Hardy Brand Variety	Hardy Brand Yield	Plot Average
Cornell University	370XS	120 bu/acre	106 bu/acre
Penn State University	370XS	149 bu/acre	142.2 bu/acre
Penn State University	760XS	162.4 bu/acre	154.1 bu/acre
University of Delaware	370XS	142.5 bu/acre	129.1 bu/acre
University of Delaware	760XS	169.2 bu/acre	144.5 bu/acre
University of Maryland	760XS	167.1 bu/acre	151.2 bu/acre

*Copies of regional test results are available upon request

High yield technologies for today's progressive farmer.

You'll find our complete product line at dealerships throughout Pennsylvania, New York, Maryland, Delaware, Virginia, New Jersey, Ohio and much of New England.



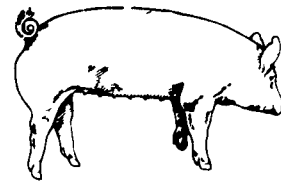
Beachley-Hardy Seed Company

P.O. Box 366 / Camp Hill, PA 17011 / 717-737-4529

WANTED

Layer contracts with efficient producers having 30,000 plus bird capacity. Respond to:

Lancaster Farming
P.O. Box 366, A-75
Lititz, PA 17543



EMERY'S BUYING STATION

OPEN TO RECEIVE YOUR MARKET HOGS

AT THE GREEN DRAGON MARKET
RD 4, EPHRATA, PA 17522
1 MILE NORTH OF EPHRATA
ON NORTH STATE STREET.

HOURS: MONDAY, TUESDAY, and WEDNESDAY 6:00 A.M. to 11:30 A.M.
215-458-5677 Residence
717-733-9648 Office

YOU ARE PAID FOR YOUR HOGS IMMEDIATELY

Ken & Lois Emery, Proprietors

ATTENTION FARMERS

The New Way To Market Your Livestock
EVERY MONDAY HATFIELD PACKING CO. WILL RECEIVE YOUR HOGS
EVERY THURSDAY MOYER PACKING CO. WILL RECEIVE YOUR CATTLE

AT THE BLAIR-BEDFORD BUYING STATION

RD #1, Martinsburg, PA

- Every Monday we will receive your hogs from 7:30 a.m. to 11 a.m. Also, calves from 7:30 a.m. to 3 p.m. Your animals will be weighed & paid for immediately.
- We will also accept your sows and boars.
- Your Butcher Cattle & Calves will be received from 8 a.m. to 12 noon every Thursday. We will either pay you for your cattle immediately or you may sell them dressed weight.
- There will not be a commission or yardage fee deducted from your check.
- You may call our office Monday mornings and we will be able to tell you the base price for hogs for the day.

DALE R. HOOVER - Owner
Blair-Bedford Buying Station

Business Residence
Phone 814-793-3077 Phone 814-793-2657