

How to select

(Continued from Page D21) made in selecting a PTO pump is its efficiency rating. This efficiency is expressed in percent and is derived from the ratio of the energy output (water horse power) to the energy input (brake horse power) of the pump. The higher the efficiency (percent) the less fuel it takes to pump the water. PTO pumps efficiency ratings

will vary anywhere from 45 percent to 80 percent. It is therefore quite important to take this factor into consideration when evaluating the cost effectiveness of a pump. Fuel savings can be high enough to more than offset the initial higher price of a pump. It is also important that the pump has the required performance capability. For instance, a pump that has a high head and low capacity will have a relative low efficiency rating. But remember also that two different pumps can have different efficiency ratings with the same performance capability. Finally, consult your irrigation dealer when selecting a pump. While extension people can give guide lines to follow they can't specify brand names. Bohley advises getting input from the dealer because of his valuable practical experience he has gained through all his customers.

McNess introduces new premix for heifers

FREEMONT, IL - A new vitamin-mineral premix specifically formulated to provide improved growth and production in dairy replacement heifers is now available from Furst-McNess Company. The product, Dairy Heifer Premix-R, includes the vitamins and minerals essential to growing heifers, plus Rumensin to improve average daily gain.

"Fed at the rate of one-third pound per head daily, Dairy Heifer Premix-R provides 200 milligrams of Rumensin per heifer daily, along with adequate calcium, phosphorus, sulfur, potassium, magnesium, salt, trace minerals, vitamin A, vitamin D₃ and vitamin E," explains Stan Bruegger, Ph.D., vice president of Technical Services for Furst-McNess.

Citing results of 10 feeding trials involving both beef and dairy heifers, Bruegger points out, "Rations containing 200 milligrams of Rumensin daily improved average daily gain by

0.14 pounds, which was a 9.8 percent improvement overall." According to Bruegger, "It is important for dairymen to pay attention to replacement heifers for a number of reasons.

"First, consider feed costs that account for more than 55 percent of the total cost in raising a replacement heifer to 24 months of age. This daily cost increases as the age of the animal increases, so it is important to get replacement heifers steadily gaining and in the milking line, thus reducing their maintenance cost.

"Another reason is if dairymen would push these heifers a little harder, following sound management and nutritional practices, we'd get more heifers bred at 13 to 15 months than we do now. Reproductive data from five trials shows that heifers receiving Rumensin showed estrus an average of 13 days earlier than those not receiving Rumensin."

Research also shows the importance of good nutrition in improving conception rates and reducing calving - related problems. Bruegger reports, "In a 448-day feeding trial, conception occurred 38 days sooner in a group of Holstein heifers fed Rumensin than those not receiving Rumensin. The Rumensin-fed heifers weighed 62 pounds more at the time of calving than the control group.

"Underweight heifers often lack skeletal development and have reduced pelvic openings, which can cause complications during delivery. A 1,200-pound heifer in good body condition and sound skeletal development will usually recover from calving more quickly than underweight or over-conditioned heifers, thus enabling her to better meet the demand of milk production."

KEN CLUGSTON 665-6775
VERNON SEIBEL 665-2782

CRAFT-BILT CONSTRUCTION INC.

FARM-HOME BUILDING
R.D.#2 MANHEIM, PA.
PH: 665-4372

BUILDING & REMODELING FOR—

DAIRY SWINE BEEF
RESIDENTAL POLE BUILDINGS STORAGE

KEYSTONE GUN-KRETE



CONCRETE PUMPING SERVICE

Featuring

- Sidewinder 45 Concrete Pump
- Up To 40 Cubic Yards Per Hour
- Pump Up To 150 Ft Vertical And 800 Ft Horizontal

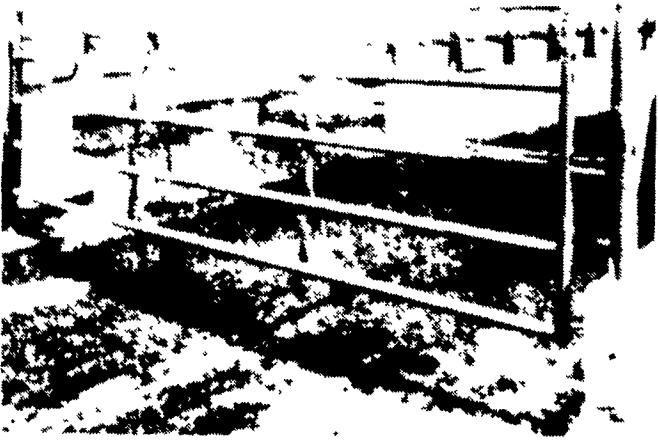
CONCRETE SPRAYING SERVICE
A Proven Way Of Applying Concrete

- Repair Retaining Walls
- Strengthen Existing Masonry Walls
- Reseal Manure Pits
- Manure Pit Construction
- Trench Silo Construction
- Silo Repair

KEYSTONE GUN-KRETE
61 Poplar Street
Gordonville, PA 17529
(717) 768-3641

Martin Cow Control Equipment:

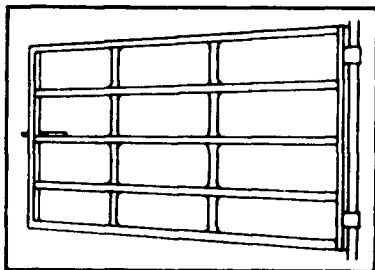
Custom Gates/Tubular Steel Fencing



Heavy duty all-steel construction for long life and dependable service. Safe, durable and maintenance free.

Custom-Built Gates

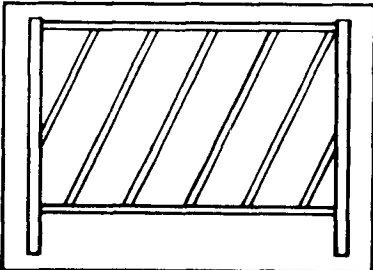
Built to withstand pushing and crowding, protect animals 14-gauge tubing is welded to end channels and vertical brace Five-bar design is 48 high available in lengths from 4' to 20' Optional accessories spring-loaded latch (cows can't rub it open), sturdy one-piece hinge plate



Feed-Through Steel Fencing

Stronger than wood safer for your herd Diagonal design lets animals feed through with less hay spillage allows cows and calves to feed from same bunk Available in 36" 48" and 60" heights — standard lengths up to 20' All joints welded

Attractive green finish — lead-free paint Standard tubular construction 2 3/8" O.D. top rail with 1 5/8" O.D. diagonal bar Custom lengths heights and feed through spacings also available



Contact Your Local Martin Dealer

A.L. Herr & Bro.
Quarryville, PA
(717) 786-3521

Histand's Farm & Home Service
Rome, PA
(717) 744-2371

William Hobensack's Sons
Ivyland, PA
(215) 675-1610

R.S. Hollinger & Son, Inc.
Mountville, PA
(717) 285-4538

C.B. Hooper & Son
Intercourse, PA
(717) 768-8231

Marshall Machinery Inc.
Honesdale, PA
(717) 729-7117

W. & J Dairy Sales
Oxford, PA
(717) 529-2569

Zimmerman Farm Service
Bethel, PA
(717) 933-4114

DELAWARE
Delridge Supply Inc.
Greenwood, DE
(302) 349-4327

MARYLAND
Farmers Supply Co.
Westminster, MD
(301) 848-6776

Strength Engineered For
LONG LIFE... by



841 Kutztown Road
Myerstown, PA 17067
Phone (717) 933-4151

PENNSYLVANIA
Erb & Henry Equip., Inc.
New Berlinville, PA
(215) 367-2169

STEEVEN SYSTEMS, INC.

HAY HANDLING EQUIPMENT

**Hay Loaders
Accumulators
Allen Rakes &
Tedders**

David O. Fink
RD 1 Box 429-F
Germansville, PA 18053

**HIGH EFFICIENCY,
CAPACITOR-RUN FAN
MOTOR**



Limited
Supply

**SPECIAL
PRICE
\$85.00**

Ideal For
36" Fans

• 1/2 HP • 115/230 Volts • 2.5 Amps

We Will Ship UPS

AGRI-EQUIPMENT, INC.

RD 4 East Farmersville Rd., Ephrata, PA 17522
(Lancaster County)
(717) 354-6520