

Cumberland Co. 4-H'ers place at State Horse Show

Lancaster Farming, Saturday, October 26, 1985-B13

CARLISLE - Cumberland County 4-H members received awards in the State 4-H Horse Show held recently at Harrisburg's State Farm Show Complex.

More than 500 contestants from across the state vied for awards. Members and their horses, all winners in county and district

competition, were entered in 68 production classes and 33 performance classes. They represent 7,100 youth enrolled in the 4-H horse and pony program statewide.

County winners and their placings in performance classes were: Justin Foster, Newville,

first in the Clover Leaf Barrel Races and third in Pole Bending Competition; Rebecca Spahr, Carlisle, seventh in Hunt Seat Equitation; Jenny Shoope, Enola, eighth in Western Riding.

In 4-H horse production classes, local winners were: Mindy Galbraith, Carlisle, third in the

two-year-old Quarterhorse Gelding Class; Melany Ginnich, Shippenburg, third in Western Pleasure Futurity Class.

Extension agent Duane Duncan noted that contest classes gave members an opportunity to display their skills in horsemanship and proper grooming of a horse for showing.

According to Duncan, the primary purposes of the state 4-H horse program are to develop riding skills, gain self-confidence by competing in shows, receive leadership training, and become more responsible by caring for an animal. The educational youth program is sponsored by The Pennsylvania State University's Cooperative Extension Service.



Route 230 West

MUMMAU TIRE

Mt Joy, PA

Serving Farmers In Penna. New Jersey Northern Maryland and Delaware

Out Of State 717-653-1260 In Penna. 1-800-222-1729



Armstrong's RED DATE All American RED DATE

Get \$150 in U.S. Savings Bonds when you move up to Armstrong Tractor Radials.



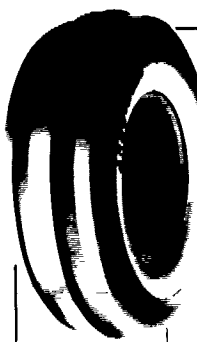
Buy a pair of Super Hi-Power Lug Radial tires and Mummau will send you \$150 in U.S. Savings Bonds

SUPER HI-POWER LUG RADIALS!

| | |
|----------------|----------|
| 18 4R34 6 Ply | \$399 00 |
| 16R38 6 Ply | \$429 00 |
| 18 4R38 6 Ply | \$459 00 |
| 18 4R38 8 Ply | \$529 00 |
| 20R34 8 Ply | \$639 00 |
| 20 8R38 8 Ply | \$649 00 |
| 20 8R38 10 Ply | \$699 00 |

ARMSTRONG FARM TIRES

Front Tractor



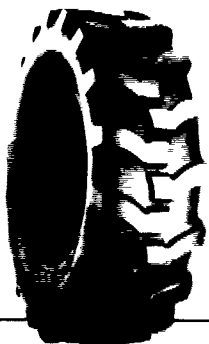
| | |
|----------------|----------|
| 400 12 | \$22 00 |
| 400 15 | \$24 00 |
| 500 15 | \$31 00 |
| 550 16 4 ply | \$33 00 |
| 550 16 6 ply | \$36 00 |
| 600 16 4 ply | \$37 00 |
| 600 16 6 ply | \$41 00 |
| 650 16 6 ply | \$42 00 |
| 75L 15 6 ply | \$50 00 |
| 750 16 8 ply | \$54 00 |
| 750 16 6 ply | \$50 00 |
| 750 16 8 ply | \$64 00 |
| 9.5L 15 6 ply | \$55 00 |
| 9.5L 15 8 ply | \$60 00 |
| 1000 16 6 ply | \$80 00 |
| 11Lx15 8 ply | \$75 00 |
| 1100 16 8 ply | \$110 00 |
| 14L 16 1 8 ply | \$160 00 |

Above Tires Shipped UPS - No Charge!

Hi Power Lug

| | |
|----------------|--------|
| 11 2x24 4 ply | 100 00 |
| 14 9x24 4 ply | 150 00 |
| 14 9x24 6 ply | 165 00 |
| 14 9x24 8 ply | 190 00 |
| 16 9x24 6 ply | 190 00 |
| 16 9x24 8 ply | 210 00 |
| 14 9x26 6 ply | 172 00 |
| 18 4x26 6 ply | 235 00 |
| 23 1x26 8 ply | 525 00 |
| 11 2x28 4 ply | 115 00 |
| 12 4x28 4 ply | 130 00 |
| 13 6x28 4 ply | 145 00 |
| 13 6x28 6 ply | 160 00 |
| 14 9x28 4 ply | 160 00 |
| 14 9x28 6 ply | 175 00 |
| 16 9x28 6 ply | 220 00 |
| 16 9x28 8 ply | 240 00 |
| 16 9x30 6 ply | 230 00 |
| 18 4x30 6 ply | 270 00 |
| 23 1x30 8 ply | 650 00 |
| 24 5x32 10 ply | 750 00 |
| 16 9x34 6 ply | 255 00 |
| 18 4x34 6 ply | 299 00 |
| 18 4x34 8 ply | 325 00 |
| 20 8x34 6 ply | 459 00 |
| 20 8x34 8 ply | 510 00 |
| 23 1x34 8 ply | 689 00 |
| 11 2x38 4 ply | 140 00 |
| 12 4x38 4 ply | 168 00 |
| 13 6x38 4 ply | 179 00 |
| 13 6x38 6 ply | 198 00 |
| 14 9x38 6 ply | 224 00 |
| 15 5x38 6 ply | 225 00 |
| 16 9x38 6 ply | 279 00 |
| 18 4x38 6 ply | 325 00 |
| 18 4x38 8 ply | 365 00 |
| 20 8x38 8 ply | 510 00 |

Loader-Dozer



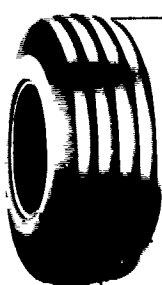
* TUBELESS *

| | |
|----------------|----------|
| 16 9x24 8 ply | \$265 00 |
| 16 9x24 10 ply | \$330 00 |
| 17 5Lx24 6 ply | \$240 00 |
| 17 5x24 8 ply | \$270 00 |
| 15 5x25 12 ply | \$320 00 |
| 17 5x25 12 ply | \$445 00 |

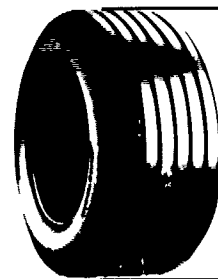
* TUBE TYPE *

| | |
|----------------|----------------|
| 14 9x24 6 ply | \$200 00 |
| 14 9x24 8 ply | \$220 00 |
| 16 9x24 6 ply | \$220 00 |
| 16 9x24 8 ply | \$235 00 |
| 16 9x24 10 ply | \$280 00 |
| 17 5Lx24 8 ply | \$240 00 |
| 16 9x28 8 ply | \$260 00 |
| 18 4x28 10 ply | \$340 00 |
| 20 5x25 12 ply | Call For Quote |
| 23 5x25 16 ply | Call For Quote |
| 1300x24 10 ply | \$225 00 |
| 1300x24 12 ply | \$245 00 |
| 1400x24 10 ply | \$255 00 |
| 1400x24 12 ply | \$280 00 |

ALL ORDERS OVER \$250.00 DURING OCT. DELIVERED FREE TO YOUR FARM! (Under \$250...Only A Small Fee Extra)



1100x16 12 Ply Tube Type \$135



1100x16 12 Ply Tubeless \$150



Skid Loader Tires

| | |
|---------------|----------|
| 700x15 6 ply | \$65 00 |
| 750x15 6 ply | \$68 00 |
| 10 16 5 6 ply | \$80 00 |
| 12 16 5 8 ply | \$120 00 |

Steel Shield 10 16 5 6 ply \$95 00 Above Tires Shipped To You FREE

Contractor F-3



| | |
|--------------------|----------|
| 11Lx15 8 ply | \$80 00 |
| 11Lx16 8 ply | \$92 00 |
| 11Lx16 10 ply | \$98 00 |
| 750 800x16 10 ply | \$80 00 |
| 11Lx16 12 ply | \$130 00 |
| 145 75 16 1 10 ply | \$225 00 |

| | |
|------------|---------|
| 22x11 00 8 | \$38.01 |
| 25x12 9 | \$54 71 |
| 18x950 8 | \$30 65 |



| | |
|-----------------|---------|
| 8 3x24 | \$95 00 |
| 9 5x24 | 112 00 |
| 14 9x24 6 ply | 195 00 |
| 16 9x24 6 ply | 210 00 |
| 18 4x16 1 6 ply | 245 00 |
| 18 4x26 6 ply | 340 00 |
| 11 2x28 4 ply | 152 00 |
| 13 6x28 6 ply | 225 00 |

Used Grass Tires In Our Stock

Wagon Tires

Subtract \$5.00 October Special

We Ship To You UPS! No Charge

| | |
|----------------------------|--------|
| 26 1200x12 4 ply | 49 00 |
| 8 5Lx14 6 ply | 41 00 |
| 9 5Lx14 6 ply | 44 00 |
| 9 5Lx14 8 ply | 49 50 |
| 11Lx14 6 ply | 49 00 |
| 9 5Lx15 6 ply | 42 00 |
| 9 5Lx15 8 ply | 44 00 |
| 11Lx15 6 ply | 43 00 |
| 11Lx15 8 ply | 47 00 |
| 11Lx15 8 ply tubeless | 50 00 |
| 11Lx16 8 ply | 58 00 |
| 11Lx16 10 ply tubeless | 74 00 |
| 12 5Lx15 10 ply | 75 00 |
| 12 5Lx16 14 ply | 85 00 |
| 14Lx16 1 12 ply | 140 00 |
| 16 5Lx16 1 10 ply tubeless | 160 00 |
| | 110 00 |



Small Rear Farm

| | |
|---------------|--------|
| 750x20 4 ply | 59 95 |
| 750x24 4 ply | 64 95 |
| 8 3x24 4 ply | 79 00 |
| 9 5x24 4 ply | 84 00 |
| 11 2x34 4 ply | 135 00 |
| 11 2x36 4 ply | 137 00 |
| 12 4x36 4 ply | 165 00 |
| 13 6x36 4 ply | 189 00 |



We Stock COMBINE TIRES • Call For Quote

Special Mounting Prices... Call For Quote



I'M NOT LION...

The Classified Livestock Section Has Beastly Selections!

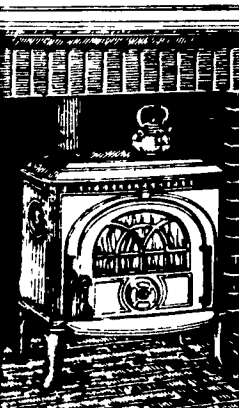


A LESSON WELL LEARNED...

LANCASTER FARMING'S CLASSIFIED ADS GET RESULTS!

Phone: 717-394-3047 or 717-626-1164

Jotul, a tradition in cast iron since 1853.



American Fireplace Stove JOTUL

BOWMAN'S STOVE SHOP RD 3, Ephrata, PA 17522 Rt. 322, 1 Mi. East of Ephrata (717) 733-4973 Tues., Wed. 10-6; Thurs., Fri. 10-8; Sat. 10-4