

BIG PUBLIC SALE

Real Estate, Antiques, Store Items, Household Goods & Tools

Of the late H. Lyle Hess of Slab Rd., Delta, York Co., PA & Mary E. Hess his widow now a resident of Leader's Nursing Home.

SATURDAY, OCTOBER 26, 1985
at 8:30 A.M.

Sale to be held in the Chanceford Community Building, 1 block south of Rt. 74 at the Brogue, York Co., PA.

1:00 P.M. REAL ESTATE 1:00 P.M.

Real estate located approx. 3/4 mile off Rt. 74 & the Norman Wood Bridge Rd., along the Slab Rd. at the intersection of McKinley Rd., consisting of approx. 1/2 acre of land improved w/a lg. 2 story combination home & store building. For many years this fine property was a general country store utilizing the entire first floor & basement. The spacious second floor consists of very fine living quarters w/outside entrance.

For inspection by appt. please call 717-862-3305.

Terms: A deposit of \$4,000 down day of sale w/balance to be paid in full on or before Dec. 16, 1985. Open house to be held Sat. Oct. 19 from 9 A.M.-to 12 noon. Not responsible for accidents on day of open house.

ANTIQUES, FURNITURE, GLASSWARE & CHINA

Beautiful lg. bow front china closet w/mirrors & paw feet; fabulous oak ornate slant front secretary & bow front bookcase comb.; very nice oak cabinet Sterling piano & bench; Victorian style love seat & matching arm chair; 3 pc. oak B.R. suite; lg. 2 pc. pine corner cupboard w/paneled blind doors; oak oval drop leaf ext. table w/2 leaves; set of 6 refinished & recaned seated chairs, very nice; sm. oak sq. drop leaf table; 2 matching cane seat chairs; oak rocker w/rush seat; beautiful pressed bk. rocker; Rishell upright Victrola in good working cond.; lg. asst. of 78 RPM records; Minnesota 4 drawer treadle sewing machine; East Lake imitation marble top stand w/beautiful East Lake wall mirror; lg. oval wall mirror; refinished oak buffet; night stand w/drawer; 2 clothes trees; oak knee hole desk; captains chair; steamer trunk; drying rack; wicker fernery & flower stands; jugs; crocks; blue dec. crock; 8 pl. setting of Occ. Japan china; pressed & pattern glass; depression & German pcs.; mixing bowls; tinware agateware; 2 stereo viewers & cards; 3 Wallace Nutting pictures; WWI sheet music; fine antique pictures & frames; metal kiddie car; metal riding fire engine; coins, some silver, etc.

STORE FIXTURES & MISC. ITEMS

Ornate brass & oak National Cash Register w/white marble coin plate; Enterprise 2 wheel coffee grinder; spool cabinet; wood & glass showcase & cash drawer comb.; unusual metal dye cabinet; sm. wood egg crate; cheese boxes; nail kegs; lg. store counter w/storage; butter scale; computing scales; lg. whirl-wind fan on stand; new Coleman gas lamp; 2 pool tables; check writer; hand adder; coffee display case; candy jars; metal & wood display racks; kerosene pump & 200 gal. tank; bag truck; golf clubs & cart.

HOUSEHOLD GOODS & TOOLS

Philco refrigerator; Frigidaire elec. stove; Imperial chest freezer; RCA XL-100 color TV; sm. appliances; 20" fan; Electrolux sweeper w/power head; Kenmore elec. sewing machine Kitchen-Aid butcher block top dishwasher; nice round maple dinette table w/4 chairs; mahogany drop leaf coffee table & lamp tables; drum tables; many nice lamps; 3 pc. blonde oak B.R. suite; cedar chest; sofa & chairs; recliner; oval braided rugs; bedding; linens; intercom set; old tool chest; misc. lawn, garden & carpenter tools; snow plow for Wheel Horse; Guardian Service ware; dishes, pots; pans, etc.

Sale Order: Beginning w/tools, dishes, glassware & general household goods. Store fixtures at 12 noon. Real estate at 1 P.M. Antique furniture & lg. appliances at approx. 1:30 P.M.

Terms: Cash or approved check.

**MARTIN R. HESS
ROBERT D. HESS, P.O.A.**

Bob & Tom Sechrist, auctioneers
Anderson & Sechrist, clerks
D. Reed Anderson, atty.
Lic. #820-821

Not responsible for accidents

Public Auction Register

Closing Date Monday 5 00 P M
of each week's publication

SAT. OCT. 26 - 12 Noon
90 Acre Farm, Valuable
Real Estate, Dry Run, PA,
Franklin Co. Conditions
by: Jacob B & Lena J

Mast. Ebersole & Shoop
Auctioneers.

SAT. OCT. 26 - 10AM
Farm Eq. LOCATION
From Seaford DE Take

Rt. 20 W. or from
Federalsburg, MD, take
Rt. 577 follow Reliance-
Galestown Rd. (MD, DE
Line), Turn onto Windsor
Rd First Farm on left.
Jack & Doris Wheatley,
Owner. A. Curtis Andrew
Auction, Inc.

Rt. 51 E. approx. 3 1/2 mis.
to Shutt's Cash Grocery
(Formerly Haines), turn
right, .2 of a mi. to sale.
Edgar A Bohrer, Sale
Mgr

SAT OCT. 26 - 10AM
Novelty & Advertising
Items, New Tools & In-
ventory Items. Stoney
Creek Barn, 1/2 mi. E. of
Dauphin PA, on Stoney
Creek Rd. For: S.P.S.

SAT. OCT. 26 - 9AM
Tractors & Eq. From I-81
S. of Marinsburg, WV,
take Exit 5 (Inwood), WV.

International, Ltd.
Childrens Garden, Inc
Kerry Pae Auctioneers.

SAT. OCT. 26 - 9:30AM All
Kinds of Tools, etc. For:
Mrs. Allen Batz, Along Rt.
501, 1 mi. S. of Bethel,
Berks Co. Weik & Weik,
Aucts.

SAT. OCT. 26 - 11 AM
Horse Sale. Keister's
Middleburg.

SAT. OCT. 26 - 23 Acre
farm more or less
w/stream and personal
property. Located along
896, 2 1/2 mis. E. of
Strasburg. Terms by: Ruth
L. Neff, Robert E &
Jeffrey R. Martin and
Frank L. Steller, Aucts.

SAT. OCT. 26 - 5PM Farm
Toy Auction at Treadway
Inn, Lancaster, PA. Farm
Toy Show From 8:30AM
till 2PM. Information: 717-
768-3554.

SAT. OCT. 26 - 9AM 72
Acre Farm, Farm Mach.,
Antiques, Hshld. Located:
7 mis. W. of York, PA, off
East Berlin Rd. (Rt. 234),
turn N. on Big Mt. Rd., 1
mi. to sale in lane on left.
Harvey E. Myers, Owner
Blaine N. Rentzel, Auct.

SAT. OCT. 26 - 9AM Real
Estate (61 A. Farm).
Tractors & Eq., Tools,
Antiques, Hshld. Located
along Blue Lane,
Columbia, Manor Twp.,
Lanc. Co., PA. Sale by:
Willis W. Saunders, Sr.
Estate. Howard Shaub &
Roy C. Probst, Aucts

PUBLIC SALE

**OF ANTIQUES,
HOUSEHOLD GOODS
M.J. DEERE TRACTOR
FARM EQUIPMENT
RIDING MOWERS &
ROTOTILLER
POWER & HAND TOOLS**

SATURDAY, NOV. 2, 1985

AT 9:00 A.M.

Loc. in Highville, along River Road, R.D.
#2 Conestoga, Manor Twp., Lanc. Co.,
PA (Dir.: Just east of Highville Church,
along the road leading from Safe Harbor
to Creswell.)

Sale by
CARRIE M. FREY
(Mrs. Raymond E. Frey)

Howard Shaub 464-3541
& Roy C. Probst
Auctioneers (AU-000831-L)

1985 SOUTHEAST DISTRICT 4-H/FFA CLUB CALF SALE

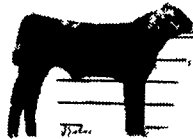
**20 Pre-Conditioned
Halter Broken Calves
Will Sell!**

SATURDAY, NOV. 16, 1985

2:30 p.m.

(immediately following the 4-H Baby
Beef Sale which begins at 1:30 p.m.)

New Holland
Sales Stable
New Holland, PA



For information contact:
Cheryl Fairbairn
(215)696-3500
Chet Hughes
(717)394-6851



PUBLIC SALE

**Of Stauffer Fruit Farm and
Business with 2 Dwellings
and Equipment**

SAT., NOVEMBER 16, 1985

SALE at 9:30 A.M.

REAL ESTATE AT 10:30 A.M.

Located 4 miles East of Turnpike at
Lancaster and Reading Interchange,
between 897 and 625 off Lauschtown
Road on Panorama Rd., Brecknock
Township, Lanc. Co., PA.

85 Acres

NO. 1 - Built in 1960 - 2 story frame
dwelling with aluminum siding, kitchen with
wood cabinets, den and laundry, living room,
bedroom with hardwood floors, full bath, 2
rooms on 2nd floor; full basement with outside
entrance, flow type coal furnace with summer
& winter hook-up, fully insulated, storm
windows and doors, one car garage concrete block
with finished room on 2nd floor, well with
pressure system.

NO. 2 - Build in 1905 - 2 1/2 story stone and
log dwelling, kitchen with Bullard coal and
wood stove, laundry with wood storage space,
living room with Surdiac coal and wood stove,
dining room with wall to wall carpet, 5 rooms
and full bath on 2nd floor, full basement, out-
side entrance, electric water heater, 200 amp
service, 3 car concrete block garage, stone and
frame bank barn with concrete floor,
refrigeration rooms, 25' by 35' 16' high ex-
tension partially finished 24' by 36' room with
Kramer 3 h.p. & 5 h.p. energy saver and
compressor, 22' by 33' room with 2 Frick 3 h.p.
compressors, loading dock, sorting room, sale
room and office.

AUCTIONEER'S NOTE: 50 year established
business known for its delicious fruits. 7 dif-
ferent variety apple, peach, sweet & sour
cherry, pear, plum and nectarines.

10% down day of sale, balance on or before
Jan. 15, 1986.

Open for inspection Sats., Oct. 26 & Nov. 2
from 2:00 till 4:00 P.M. or for appointment call
215-445-6977.

Terms by
ELIZABETH S. BURKHART
Estate of Verna S. Musser
Eva S. Fox
Isaac S. Stauffer
Mary Jane Rutter
Lois M. Thiessen
Alfred J. Stauffer

Aucts.:
Robert E. & Jeffrey R. Martin,
656-7770 AU000580L
Frank L. Steller
Kenneth Howard,

Atty for Appel, Yost & Sorrentino
No Out of State Checks

Lunch by Fivepointville Ladies Auxiliary

2ND ANNUAL WE CARE BENEFIT AUCTION

"CRIME PREVENTION MINISTRY"
SATURDAY, OCT. 26, 1985

AUCTION TIME 9:00 A.M.

LOCATED AT DAVID GOOD'S AUCTION GROUNDS. FROM
LANCASTER TAKE RT. 23 E. TO LEOLA. TURN LEFT ONTO
NORTH MAPLE AVE. GO APPROX. 1 MILE TO AUCTION
GROUNDS ON RIGHT. WATCH FOR SIGNS.

7:00 A.M.

Pancake &
Sausage Breakfast

9:00 A.M.

Auction Begins
12:30 P.M.

Clock To Be Sold
1:00 P.M. Quilts

COLONIAL GRANDFATHER'S CLOCK; Has A Solid Cherry Case
Standing 80" Tall. A Very Beautiful Piece (W) Quality Workmanship

20 PLUS QUILTS

Patterns Include: Lancaster County Rose; Dresden Plate; Broken Star;
Snowflower; Bethlehem Star; Double Wedding Ring; Log Cabin; Pat-
chwork; Crib Quilts; Rocking Horse; Under The Rainbow & Others.
Assortment Of Craft Items; Handmade Cabbage Patch Doll & Much More.

**HAND MADE HORSE-DRAWN
LOG WAGON**

by Amos Martin, Model R John Deere Toy Tractor, **HANDMADE DOLL
SWING SET, RUTT-WILLIAMS** Custom Made Oak L-Shaped Kitchen (W)
Raised Panel Doors (Floor Plan Available).

**NEW ITEMS INCLUDE,
AIR TIRE EXPRESS WAGONS,**

23 Cu. Ft. & 19 Cu. Ft. Chest Freezers; Bolens 20" Rotary Mower; 2
Rototillers; 2 Ton Floor Jack; 26" 10 Spd. Bike; Lawn Furniture; Metal
Gun Cabinet; 2 Captain Beds; Plank Bottom Chairs; 2 Lamps; Doll
Cradle; Plus Lots Of Other Furniture; Toy Pedal Tractor; Auto Supplies;
Dog Food; Rabbit Food; Horse Food; Garden Tools; Clothing; Work
Boots; Brass Wind Chimes; Black Top Sealer; **GIFT CERTIFICATES
FROM LOCAL BUSINESSES AND RESTAURANTS** Including: Bulldozer
Work; Backhoe Work; Panwork; 10 Yd. Concrete; 15 Ton Stone; & Others.
Meat & Poultry Products; Items Made By Prisoners.

USED ITEMS

Bicycle; National Cash Register; Wheel Balancer; Lawn Mower; Cord
Wood; Hay; Straw; Shrubs & Plants. Doors; Steel Windows; Chain Saw;
Many Other Items Too Numerous To Mention.

**TERMS BY:
WE CARE PROGRAMS**

**AUCTION CONDUCTED BY,
PAUL K. LANDIS, AARON MARTIN,
PAUL E. MARTIN, JOHN STAUFFER,
RANDAL V. KLINE, LLOYD KREIDER,
ROY GOOD JR. AU-002116-L**

NOTE: Anyone Having Any Items To Donate Contact Following Per-
sons; Glen Hoover, 717-733-7301; Delmar Weaver, 717-733-3959; David
Weaver, 717-656-7274; Ernest Stauffer, 717-733-3763. Anyone Wishing To
Donate Food Contact Shirlene Redcay, 717-656-9575; Ken Burkholder, 215-
445-5280.

This Is Your Opportunity To Help Support The We Care Crime
Prevention Programs By Attending This Auction. Bring Your Chairs &
Enjoy The Day With Us. Auction To Be Held Under Tent. Plenty Of Good
Food.