

35 TRUCKS AND TRAILERS

For Sale: 1975 Diesel IH 33,000 GVW steel bed truck Allison transmission. Good condition \$3500/best offer 814-695-7745

For Sale: 1972 Dodge 1/2 ton Pickup, auto., \$795. Call 717-949-6817.

KEYSTONE FORD TRUCK SALES, INC.

Trucks are our only Business Interstate 83 at 322E, 470 Penhar Rd. Harrisburg, Pa. 17111

717-564-6661

PA Watts 1-800-692-6235

Parts & Service Open 24 Hours A Day Sunday Midnight to Friday Midnight

- 1985 Chevrolet Crew Cab Pickup, 6.2 Diesel, Automatic, PS, PB, Air Conditioning
- 1983 Ford Ranger Pickup, 4 Cyl., 4 Speed
- 1977 IHC Scout, 4x4, V8, 4 Speed
- 1981 F150 Super Cab, V8, Automatic, PS, PB, Brakes, Utility Body
- 1984 E250 Ford Club Wagon, 6.9 Diesel, Auto. Steering, Brakes, PS, PB, Air Conditioning, Loader, 4 Captains Chairs and Bench Seat
- 1983 F-350 12' Stake, 6.9 Diesel engine, 4 speed, PS, PB, 10,000 GVW.
- 1980 Int. DT 466, 5+2, PS, 24' Van Body
- 1981 LN7000, 175 Cat., 5 Speed, PS, 20' Van Body w/Lift Gate
- 1980 GMC General Tractor, 290 Cummings, 10 Speed, PS, Clean Truck
- 1980 R686 ST Mac Tractors (2), 300 HP, 5 Speed Trans.
- 1979 LN 9000 Tractor, 230 Cummings, 10 Speed, PS
- 1979 LN7000, 220" WB, 175 Cat, 5+2, PS, AB, 27,500 GVW.
- 1978 C7000, 175 Cat, 5+2, PS, 24' van body.
- 1968 IH model 220, 549 V8 gas, 18' van body w/lift gate & side door, 5 speed, AB, 35,000 GVW.
- 1969 Int'l, 10' dump, 549 V8, 5+2, AB, 34,000 GVW, sharp truck.
- 1979 LNT9000, 290 Cummins, 9 speed, PS, 50,000 GVW. 12 front, 38 rear.
- 1982 Ford LNT9000, NTC 300 Cummins, 9 speed, 12 & 38 axles, PS, 125,000 miles, super clean.
- 1978 Ford CLT9000, double bunk, 400 Cummins, 13 speed.
- 1979 CLT9000 double bunk, air ride, 525 Cummins, 13 speed trans., tractor package.
- 1985 Fiesta Mini Home with roof air.
- 1978 Chevrolet, 22' Coachman motor home, 34,310 miles with awning.

USED TRUCKS



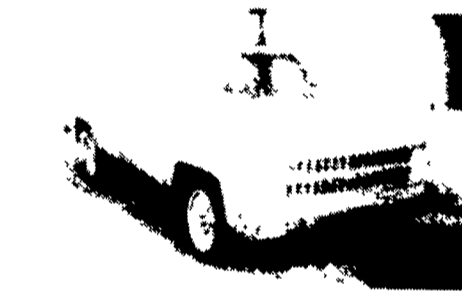
'81 Chevy 1/2 Ton Diesel, AT, PS, PB, AM-FM, 2 Tanks, Excellent Condition \$4,750



'83 Ford F250 Super Cab, 351, AT, PS, PB, AM/FM Cassette, Reclining Bucket Seats, 2 Tone, Excellent Condition \$9,500



'83 Chevy Scottsdale, V8, Auto., PS, PB, AM/FM, Aux. Fuel, 28,000 Miles \$7,950



'82 Chevy 1/2 Ton, 6.2 Diesel, A.T., P.S., P.B., AM-FM, Excellent Condition \$5,150

MARTIN'S AUTO SALES

725 E. Main St.
New Holland, PA 17557
(717) 354-9967

FOR SALE:

1970 C-800, 5+2, 361 cu. in. engine. Has new valves, piston, rings, bearings. New compressor, brakes & carburetor. Ready to work.

1963 Ford, good frame & large flatbed with liftgate, remainder of truck in very poor condition, engine not running, parts missing.

\$2700 (negotiable) takes both. Located in Long Valley, N.J. Will sell separate.

201-334-2516.

If after hours, leave message for return call.

For Sale: 1971 F350 Ford, short wheel base, 11,000 GVW, \$500 215-384-2170 after 5:30 p.m.

For Sale: 2 wooden truck bodies. One 12 ft.; one 8 ft. Used, in good condition. Make offer. Bodies sitting in Eby's truck body yard. 609-452-8903.

For Sale: 66 Ford Pickup, 1/2 ton, 6-cyl., 3-speed, \$650. 215-273-3789.

For Sale: 64 Int'l Pickup, 3/4 ton, heavy duty, 6-cyl., 3-speed, \$500. 215-273-3789.

For Sale: '72 C-700, Ford, 20' van body, rebuilt engine & trans., good condition. \$2,000. 215-273-3789.

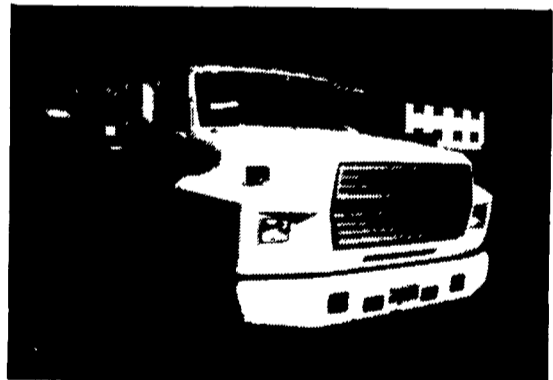


ISUZU'S Arrived!



- The intelligent alternative to the Chevy G/C30 and Dodge D350
- Impressive list of standard features
- Remarkably economical
- In stock now...with Eby cattle & platform bodies

1986 ISUZU GVW-11,000 Lb. PS, Tilt Steering, Exhaust Brake, Tilt Cab, 5 Spd., Full Floating Rear Axle, Turbo Charged, Diesel, Anti Sway Bars Front & Rear.



1985 Ford F600, 24,500 GVW, V8 370, 5 Sp. 2 Sp. Rear, Power Steering, 207 in. W. Base, Heavy Duty Throughout.



1975 IHC 1800, V8, 5 Speed, Power Steering, Air Brakes, 2 Sp. Rear, 26,000 GVW.

1979 VOLVO Diesel: Also 1978 VOLVO Tractor Diesel.

GRAIN body trucks from 12 to 20 Ft. FORDS., CHEV., INTERNATIONALS - gas or diesel - Mix or Match bodies and chassis.

1978 MACK U600 twin screw/10 speed Road Ranger with NEW 15 ft. dump body. 20 other dump trucks of all sizes to choose from.

1979 INT'L 2054 - 33,000 GVW - NEW REBUILT DT 466 with 20 ft. REF. body with or without body. 30 other REF. trucks to choose from.

1968 Twin screw FORD Cab & Chassis - Just reconditioned.

1973 FORD - 5+2 speed; P/S ASPUNDH bucket truck, low mileage.

ALL TYPE OF REEFER TRUCKS - GRAIN BODIES; DIRT DUMPS TRUCK TRACTORS; SINGLE AXLE - TANDEM AXLES MORE THAN 250 TRUCKS TO CHOOSE FROM

MARTIN'S TRUCKSVILLE
560 LAMPETER ROAD LANCASTER, PA 17602
717-392-6266



New Holland



HEAVY DUTY TRUCKS

Rt. 23

(717) 354-4901