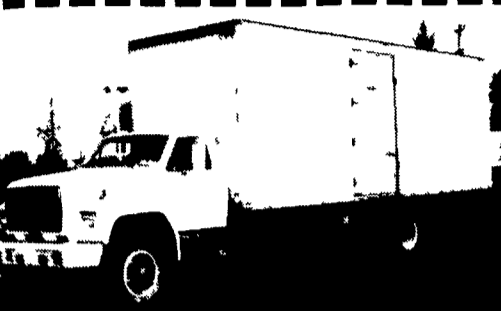


35 TRUCKS AND TRAILERS

'83 Ford XL F250 3/4 ton 4x4, 302 auto, PB, PS, 20,000 miles. \$8,900 717-733-2873

Chevy 1979, 350 engine, 4 spd. transmission, Swartz 14' roll back body w/winch.

Eagle Machinery Co.
Route 100
Eagle, PA 19480
215-458-5326



1984 Ford F-800
Low Miles, Air Brakes, Power Steering, Detroit Diesel, 5 Spd., 2 Spd. Rear, Heavy Frame, 10:00x20 Tires, 24' Van L&R Doors, Roll Up Rear Door, Lift Gate, 30,750 GVW, Priced To Sell. Call Sol or John
(215) 327-1100



1986 GMC 7000
New Cab & Chassis, Hydraulic Brakes, V8 Gas Engine, 10:00x20 Tires, 50 Gal Fuel Tank, H.D. Radiator, 5 Spd., 2 Spd. Rear, 203 in. Wheelbase, Brake Booster, AM Radio, 28,000 GVW, Ready for Body of Your Choice. Call Sol or John
(215) 327-1100

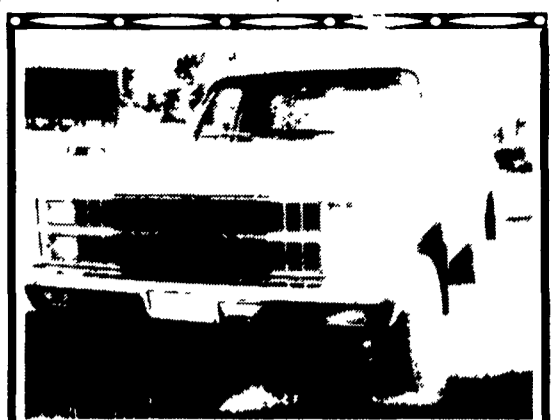
AIR-HYD. Specializing In 10,000 PSI HOSE
• JACKS • CYLINDERS • PUMPS
\$99.00 MODEL 67229 BLACKHAWK-JH-12 ENERPAC List \$122.40 Made in U.S.A.
\$49.99 MODEL D-51125 AUSCO-DREDNAUT List \$83.37 Made in U.S.A.
Also In Stock SHORT & HI-RANGE 3, 12, 20 TON

REPAIRS AND REBUILDING New & Used
Lincoln-Walker
• Ausco • HeinWerner Weaver • Blackhawk
• OTC • Enerpac
BEARTOWN HYDRAULICS
Rt 322, Midway Between Honey Brook & Blue Ball
Mon, Tues, Thurs & Fri 7 AM - 5 PM
Call for Wed, Sat & Even Hours
(717) 354-5649
Ron Zimmerman



1982 Flat Bed Pup Trailer
Length - 22 ft., 10:00x20 tires, air brakes, 2 - 20,000# axles, pressure treated deck, 2 - parking brakes, adjustable draw bar, 40,000 lbs. GVW.
Asking \$6,000
Ask for Charlie

Kulp & Staudt, Inc.
Pottstown Ave.
Pennsburg, PA 18073
215-679-8066
215-323-0755



1982 CHEVY SCOTSDALE S-10 4x4
5.0 liter gas, 4 speed, AM/FM, Disc Brakes, 32,900 Mi.



DUTCHMAN'S TRUCK SERVICE, INC.
Pennsylvania Turnpike Exit 21
R.D. 3, Denver, Pennsylvania 17517
Phone 215-267-2867
Contact: Philip K. Higgins

YES!! ENGLE FORD DOES MAKE IT EASIER!!

Over 100 New & Used Trucks, Vans & 4x4's

85 Ford Bronco 4x4 351 Auto, PS, PB, XLT Lariat
84 Ford F150 Super Cab, 6 Cyl., 4 Spd. OD, Topper, Only 17,000 Miles.
84 Ford Ranger 4x4 Truck, V6, 4 Spd., PS, PB, Black Beauty
(2) 78 Ford L-N 8000 Cab & Chassis, Cat 3208 Engine, Diesel, 5 Spd. Over 2, A Title, 186" Wheel Base. Hard Find.
68 International Dump 5 & 2 Speed.

ENGLE FORD, INC.
Rt. 147 North
Millersburg, PA 17061
In PA The Call's On Us 1-800-242-8075
Out of State Call 1-717-692-4841

'84 Isuzu diesel long bed pickup, deluxe model, 5 spd, PS, AM-FM, 18,000 miles, excellent condition, \$5,600, 1983 Isuzu diesel 4 WD pickup, PS, 5 spd, sliding rear window \$5,950. 717-733-2873

'84 Ford F150 1/2 ton Super Cab pickup, 302 auto., PB, PS, AM-FM, 6200 GVW, excellent condition \$8,900 '84 Ford F150 1/2 ton pickup, 6 cylinder heavy duty 4 spd, PS, PB, 6,000 miles, like new \$7,400 '82 Ford F150 4x4 pickup, 6 cylinder, 3 spd overdrive, PS, PB, AM-FM, 34,000 miles \$7,400 717-733-2873

'83 Chevy C30 Silverado, dual wheels, 454, 4SP, HD suspension, PS, PB, air conditioning, gooseneck trailer hitch, 45,000 mis, excellent condition, \$10,000 FIRM Also 24' Shoop gooseneck stock trailer, tandem axle, elec. brakes, \$3,500 301-865-3146

"CLEAN FLOW"

Aluminum Bodies

by OMAHA STANDARD

Backed by more than 60 years' experience in truck body manufacturing, this is the aluminum body that sets the standard for the industry. With 92 3/4 inches of unobstructed inside width, this rugged, lightweight body lets you haul more grain or bagged or palletized commodities and save fuel doing it.

With 60" or 72" high, vertically corrugated, splice-free sidewalls, three-piece full opening rear doors, swing-out header, trailer-type aluminum flooring and "I" beam cross members, this body's built for rugged field work and continuous road hauling.

"Clean Flow" design of the extra Deep 30° sidewall corrugations allows complete emptying with no sharp corners for grain to hang up.

Available at:
FARMERSVILLE EQUIPMENT INC.
RD 4, East Farmersville Road
Ephrata, PA 17522
Located in the Village of Farmersville, Lancaster County
717-354-4271

Omaha Standard

Mark VII-Pickups - Broncos - Bronco II - Stake Body - Crew Cab - Super Cab - Chassis Cab - Escort - Mustang - LTD -

NOW YOU CAN TAKE ADVANTAGE OF THE BUYING POWER OF FIVE SHEEHY DEALERSHIP LOCATIONS

NEW SHIPMENTS OF DIESEL 4x4's, PICKUPS AND SUPER CABS ARRIVING DAILY

SHEEHY HOTLINE 717/272-7671
Unless This Emblem Is On Your Car Or Truck, You Probably Paid Too Much

9-9 Daily
9-5 Sat.

SHEEHY LEBANON

Formerly R & J Motors - 20th & Cumberland St. - Lebanon

Tempo - Cougar - Town Car - Continental

Crown Vic - T Bird - Lynx - Topas - Marquis - Grand Marquis